

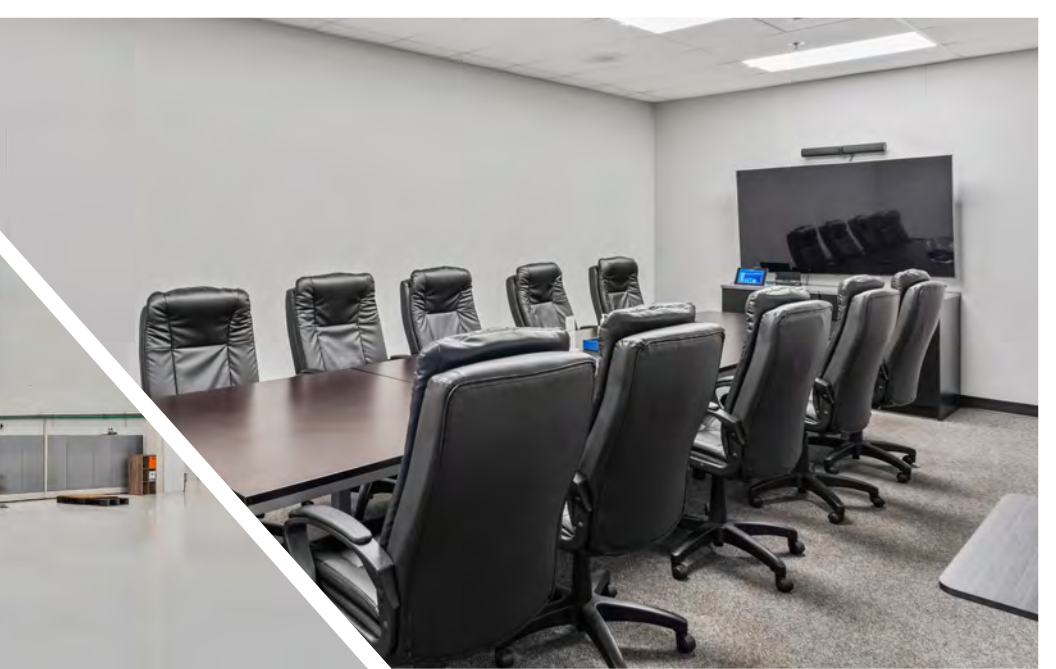
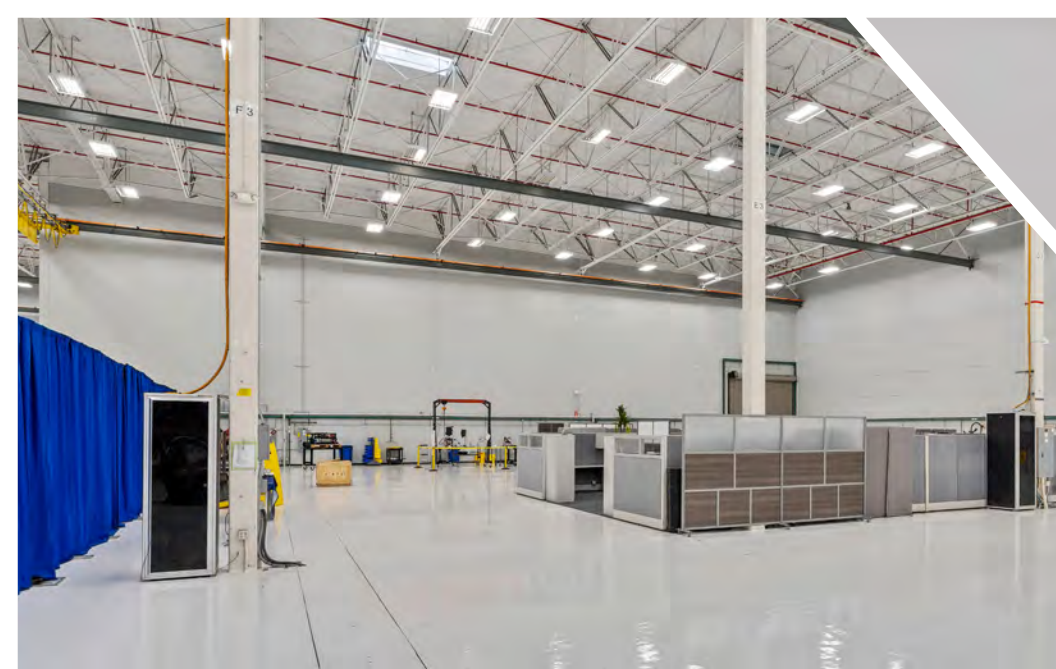
ADVANCED MANUFACTURING WAREHOUSE

Available for Sublease | Up to **136,026 RSF** Available



FLEXIBLE TERM LENGTH | 2615 94TH ST SW EVERETT, WA 98204 | CONTACT BROKERS FOR RATES





BUILDING HIGHLIGHTS

2615 94th St SW, Everett, WA 98204



±127,167 SF

WAREHOUSE/ADVANCED
MANUFACTURING SPACE



Warehouse Fully
Trenched

WITH EASY ACCESS TO COMPRESSED
AIR, WATER, POWER RUNS, AND NETWORK
CABLING. UTILITY TRENCHES ±2.5 FEET
IN DEPTH



5 Oversized

GRADE LEVEL DOORS,
TWO (2) COVERED
DOCK-HIGH LOADING
POSITIONS IN PROCESS



Heavy Power

(3,000 AMPS 480V 3-PHASE)



36'

CLEAR HEIGHT



181+

PARKING STALLS



±8,859 SF

OFFICE + OPEN WAREHOUSE
OFFICE IF DESIRED



Flexible Term Length

AVAILABLE WITHIN 30 DAYS



Bridge Cranes

AVAILABLE THROUGHOUT
WAREHOUSE

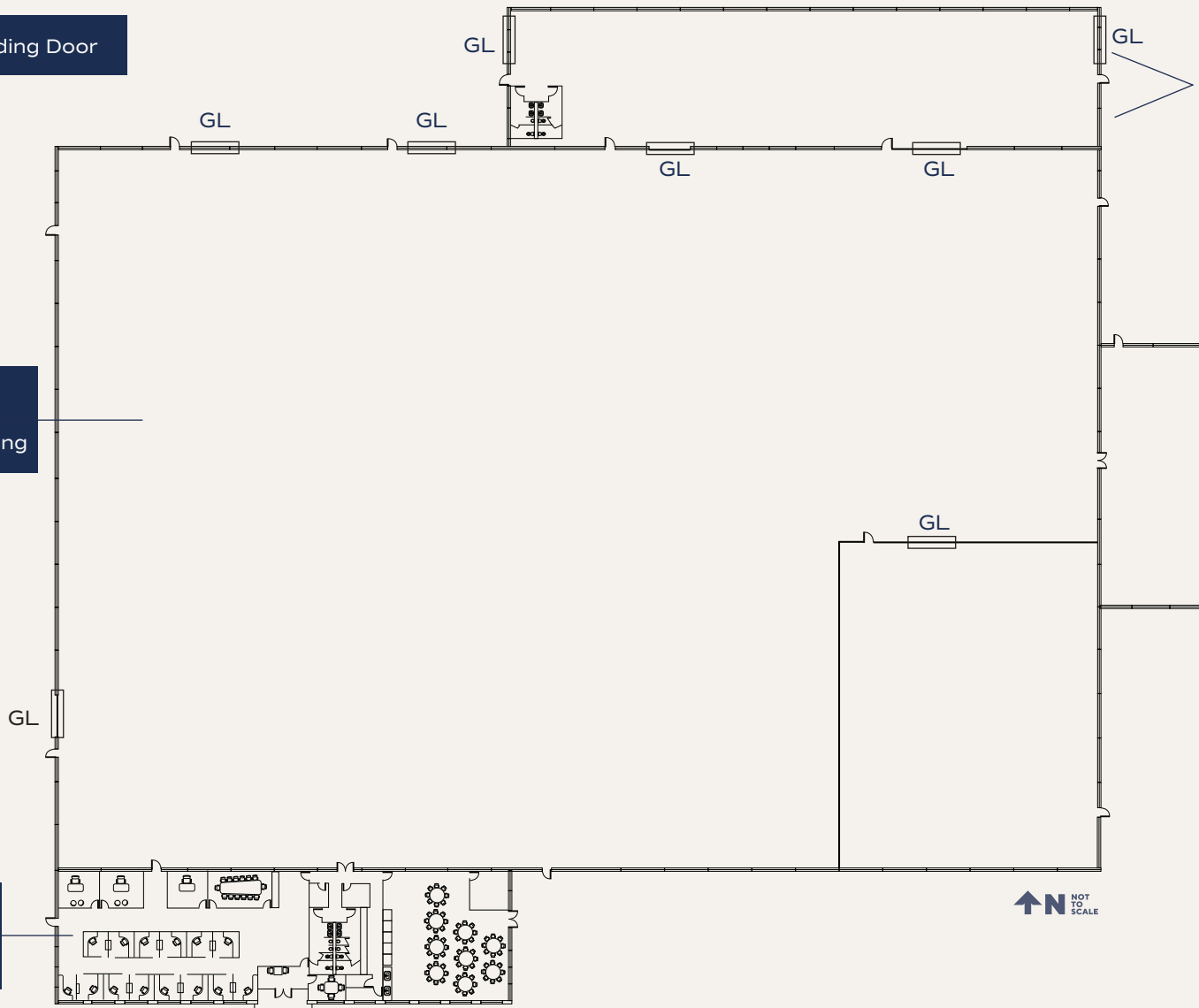
FLOOR PLAN

GL- Grade Level Loading Door

Two (2) Dock High Loading Positions in Process

127,167 SF
Warehouse/
Advanced Manufacturing

8,856 SF
Office, Restrooms,
and Kitchen





IMMEDIATE PROXIMITY







Broker Contacts:

Gabe Smith

Executive Vice President
+1 206 450 0898
gabe.smith@jll.com

Brent Jackson

Executive Vice President
+1 425 449 2715
brent.jackson@jll.com

McKenna Hartman

Associate
+1 206 245 0708
mckenna.hartman@jll.com

Although information has been obtained from sources deemed reliable, neither Owner nor JLL makes any guarantees, warranties or representations, express or implied, as to the completeness or accuracy as to the information contained herein. Any projections, opinions, assumptions or estimates used are for example only. There may be differences between projected and actual results, and those differences may be material. The Property may be withdrawn without notice. Neither Owner nor JLL accepts any liability for any loss or damage suffered by any party resulting from reliance on this information. If the recipient of this information has signed a confidentiality agreement regarding this matter, this information is subject to the terms of that agreement. ©2026 Jones Lang LaSalle IP, Inc. All rights reserved.

