



# WATTERSON OFFICE PARK





## Property Overview

Watterson Office Park is a signature three-building campus conveniently located in suburban Louisville. The park offers several available suite options ranging from 658 square feet to 16,748 square feet.

### **1930 Bishop Lane**

**16 floors**

**16,748 s.f. floorplates**

### **1941 Bishop Lane**

**10 floors**

**10,500 s.f. floorplates**

### **1951 Bishop Lane**

**5 floors**

**15,520 s.f. floorplates**

## Premium Access & Amenities

- Centralized location provides convenient access to downtown Louisville and surrounding areas
- Minutes to Interstate-264 and Interstate-65
- Prominent visibility from Interstate-264
- Several on-site amenities including a restaurants, sundry shop, tenant lounge / WiFi café and private meeting area

# Office Park Highlights



Recently Updated  
Lobbies And  
Entrance Finishes



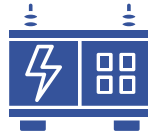
Fiber Connection  
Between All Three  
Buildings



Abundant  
Surface Parking



On-Site Property  
Management



On-Site Generators  
For Tenant Use



24-Hour  
Security



1951  
BISHOP LANE

1941  
BISHOP LANE

1930  
BISHOP LANE

# On-Site Amenities



Common Conference  
Room



Seasonal on-site  
food trucks



Wi-Fi/Internet  
Café



AHHA Collective  
Wellness Spa



Common Training  
Room



Tenant  
Lounge

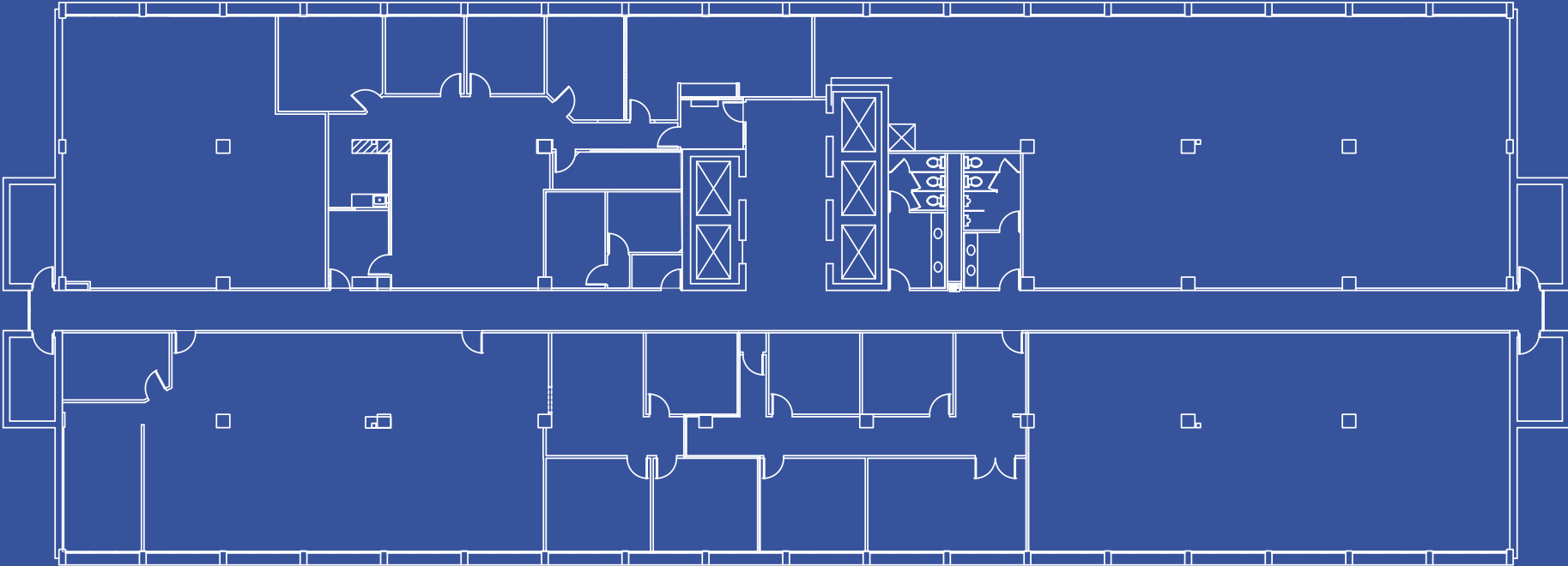


Lee's  
Kitchen



# Floor plate: 16,748 SF

Full floors available with contiguous blocks of 33,496 SF and 50,244 SF



## Location

Watterson Office Park is centrally located within Greater Louisville and provides easy access to major interstates, Louisville Muhammad Ali International Airport and downtown.

## Travel

### Distances

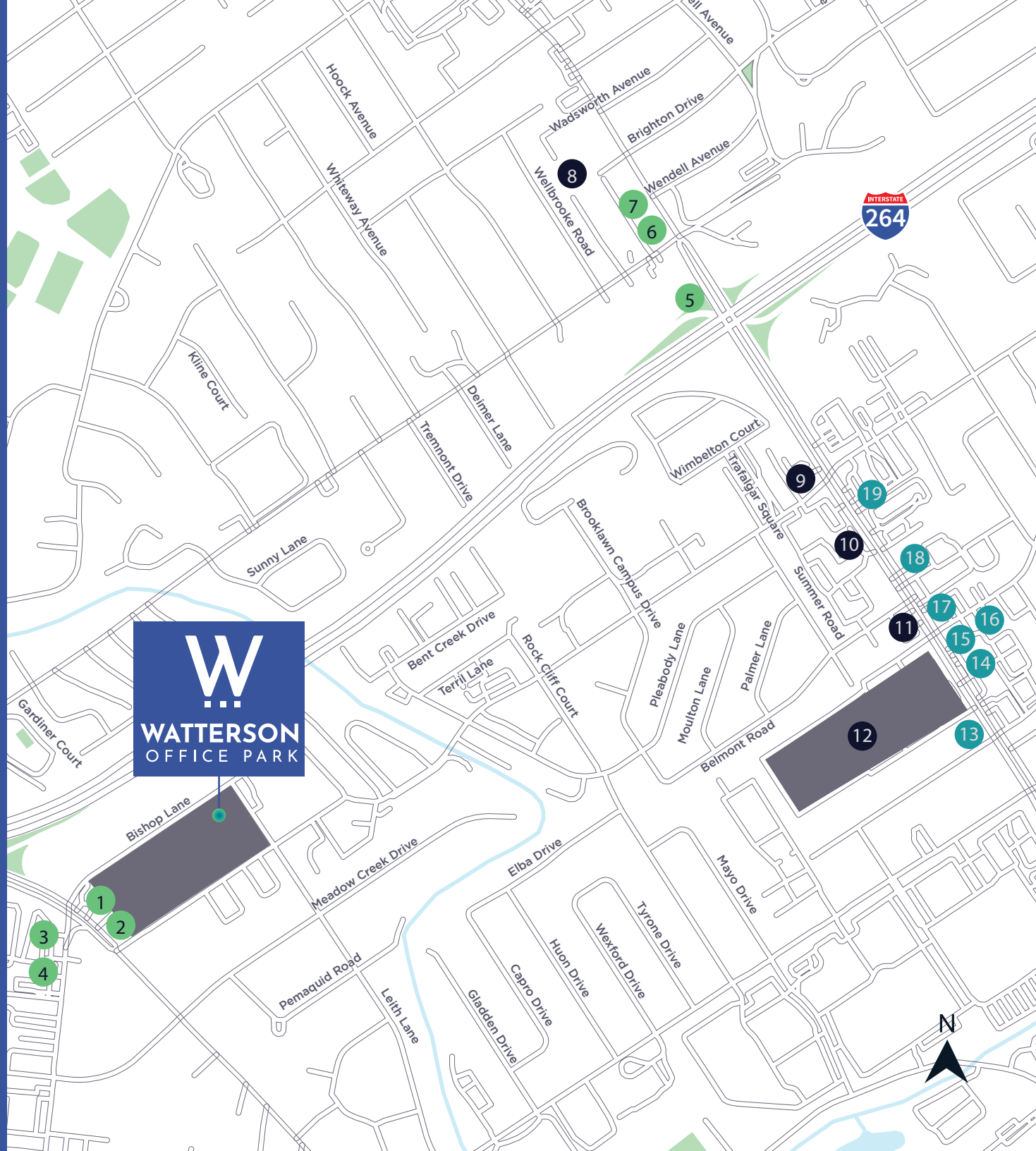
Louisville Muhammad Ali International Airport	3.9 miles
University of Louisville	5.2 miles
Downtown Louisville	7.9 miles



# Nearby Amenities

## Dining

- 1** Dunkin' Donuts
- 2** Subway
- 3** Yummy Pollo
- 4** Oriental Star
- 5** Mi Pueblo Mexican Cuisine
- 6** Waffle House
- 7** Winston's Restaurant
- 8** The Bakery
- 9** Heine Brother's Coffee
- 10** LIFEbar
- 11** El Nopal
- 12** Subway
- 13** Rally's
- 14** McDonald's
- 15** KFC
- 16** Costco
- 17** Chick-fil-A
- 18** Mi Sueno Restaurant
- 19** El Caporal
- 20** Starbucks
- 21** Penn Station East Coast Subs
- 22** Heitzman Bakery
- 23** Popeyes Louisiana Kitchen
- 24** DQ Grill & Chill





For leasing information, contact:

**Yandell Wood, SIOR**  
+1 502 394 2518  
yandell.wood@jll.com

**Doug Owen, SIOR**  
+1 502 394 2516  
doug.owen@jll.com



Although information has been obtained from sources deemed reliable, JLL does not make any guarantees, warranties or representations, express or implied, as to the completeness or accuracy as to the information contained herein. Any projections, opinions, assumptions or estimates used are for example only. There may be differences between projected and actual results, and those differences may be material. JLL does not accept any liability for any loss or damage suffered by any party resulting from reliance on this information. If the recipient of this information has signed a confidentiality agreement with JLL regarding this matter, this information is subject to the terms of that agreement. ©2025 Jones Lang LaSalle IP, Inc. All rights reserved.