

255 SHORELINE DRIVE, SUITE 450, REDWOOD CITY



PLUG & PLAY PROFESSIONAL OFFICE SPACE
11,125 RSF CLASS A SUBLEASE
AVAILABLE IMMEDIATELY



BUILDING FEATURES



Class A building and ownership – Hudson Pacific Properties



On the water in Redwood Shores



2 level parking garage



Fitness center and showers



Common conference room



Multiple outdoor meeting and R&R spaces



SUITE FEATURES



±11,125 RSF fully plug-and-play sublease



Ideal design for legal or VC firms



Great views from all three sides



Glass walls with sliding glass doors throughout



21 private offices including a private C-suite



21 large workstations with room to add seats



Large boardroom plus secondary conference



Formal reception and 2 open kitchens

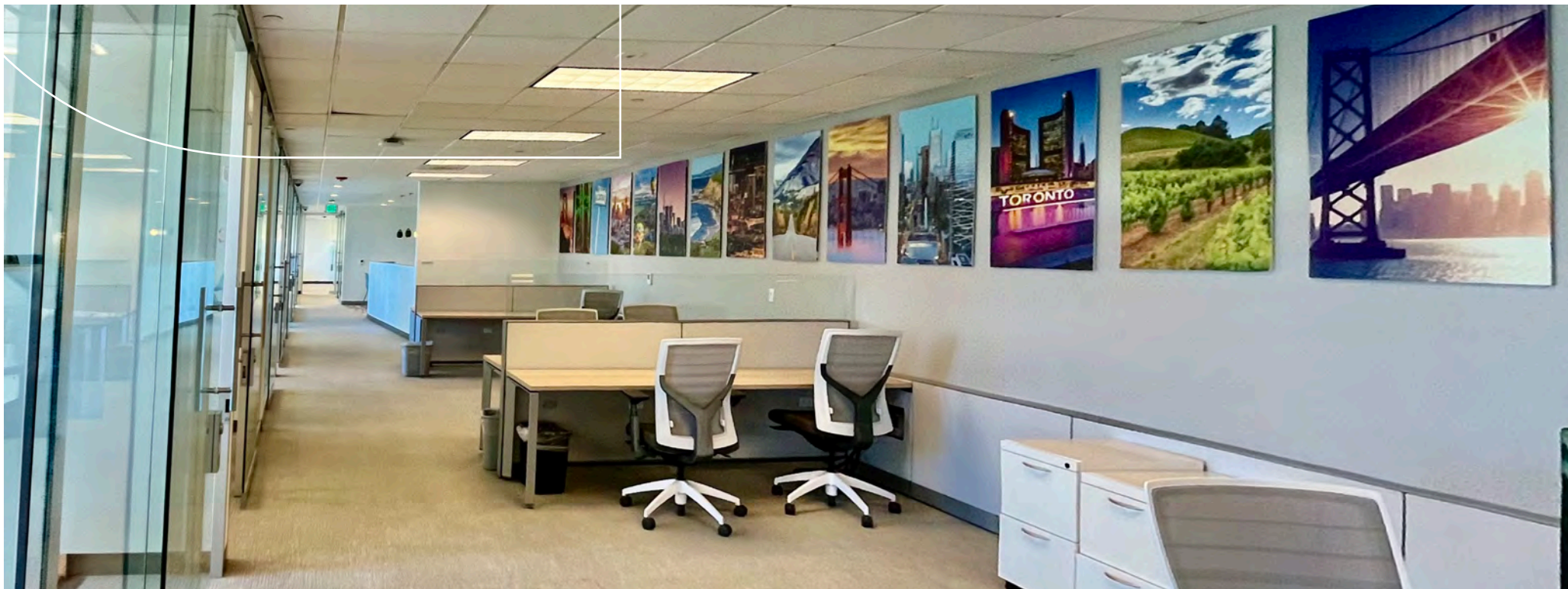


Copy, storage, and server rooms (w/5 ton HVAC)

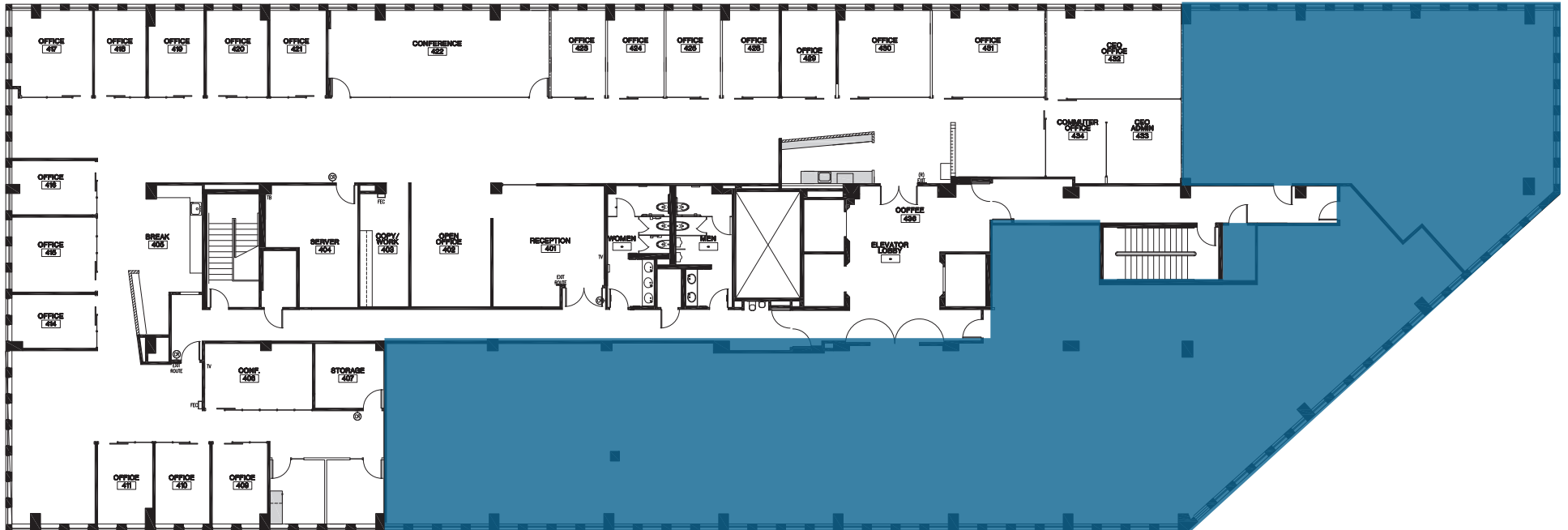


Term through 11/27; HPP will consider extension or direct lease





SUITE 450
11,125 RSF



TIM GRANT

+1 650 483 6571

tim.grant@jll.com

CA RE License #00674597

CLARISSA RICHARDSON

+1 909 377 7432

clarissa.richardson@jll.com

CA RE License #02085310



TIM GRANT

+1 650 483 6571

tim.grant@jll.com

CA RE License #00674597

CLARISSA RICHARDSON

+1 909 377 7432

clarissa.richardson@jll.com

CA RE License #02085310

Jones Lang LaSalle Brokerage, Inc. Real Estate License # 01856260

Although information has been obtained from sources deemed reliable, JLL does not make any guarantees, warranties or representations, express or implied, as to the completeness or accuracy as to the information contained herein. Any projections, opinions, assumptions or estimates used are for example only. There may be differences between projected and actual results, and those differences may be material. JLL does not accept any liability for any loss or damage suffered by any party resulting from reliance on this information. If the recipient of this information has signed a confidentiality agreement with JLL regarding this matter, this information is subject to the terms of that agreement. ©2026 Jones Lang LaSalle Brokerage, Inc. All rights reserved.

