

AVAILABLE SPACE



320 Santa Monica Blvd.

At the corner of Santa Monica Blvd and 3rd St

Santa Monica -Retail/Grab & Go Restaurant Opportunity



THE *Highlights*

Situated in the heart of Santa Monica & within walking distance to Third Street Promenade, this location is ideal for many retail or restaurant users. It's easy accessibility to the Expo line lends for tourists and commuters to shop and dine in this beach city.

- Retail/Grab & Go Restaurant Opportunity
- 1,321 SF Available
- Multiple public parking structures available



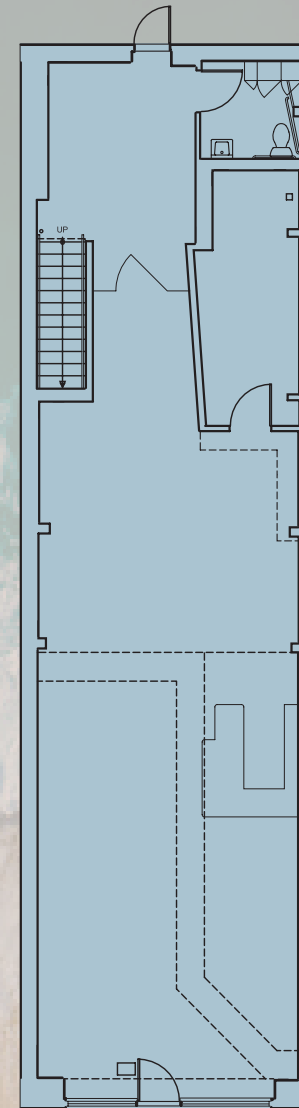
THE
Floorplan



SUITE 320

GROUND FLOOR

1,321 SF



SANTA MONICA *At a Glance*

- **Booming Tech Scene:** Strategically imbedded in LA's "Silicon Beach", Santa Monica offers access to millennial and Gen Z residents with high levels of disposable income.
- **Established Tourism Presence:** Santa Monica attracts over 5.3 million people annually and has long its role as one of Southern California's go-to destinations for shopping and site seeing.
- **Highly Affluent Residents:** With an average HHI of over \$174k, a healthy economy, and increasingly expensive housing market, Santa Monica enjoys unparalleled access to big spenders and affluent residents.



MARKET Demographics



Population

90,627
2 miles

166,641
3 miles

406,345
5 miles



Daytime
Employees

82,608
2 miles

140,642
3 miles

286,296
5 miles



Avg. Household
Income

\$195,271
2 miles

\$209,275
3 miles

\$202,463
5 miles



Median
Home Value

\$1.81 M
2 miles

\$1.88 M
3 miles

\$1.73 M
5 miles



Total Household
Expenditure

\$5.48 B
2 miles

\$10.25 B
3 miles

\$22.6 B
5 miles

Source: Sites USA

LA Metro Area

Creative Industries
& Tech



35%
employees

\$122,510
average annual wage

Hospitality &
Tourism



14%
employees

\$39,600
average annual wage

Retail



9%
employees

\$41,770
average annual wage

NEIGHBORING Retail



ANTHROPOLOGIE

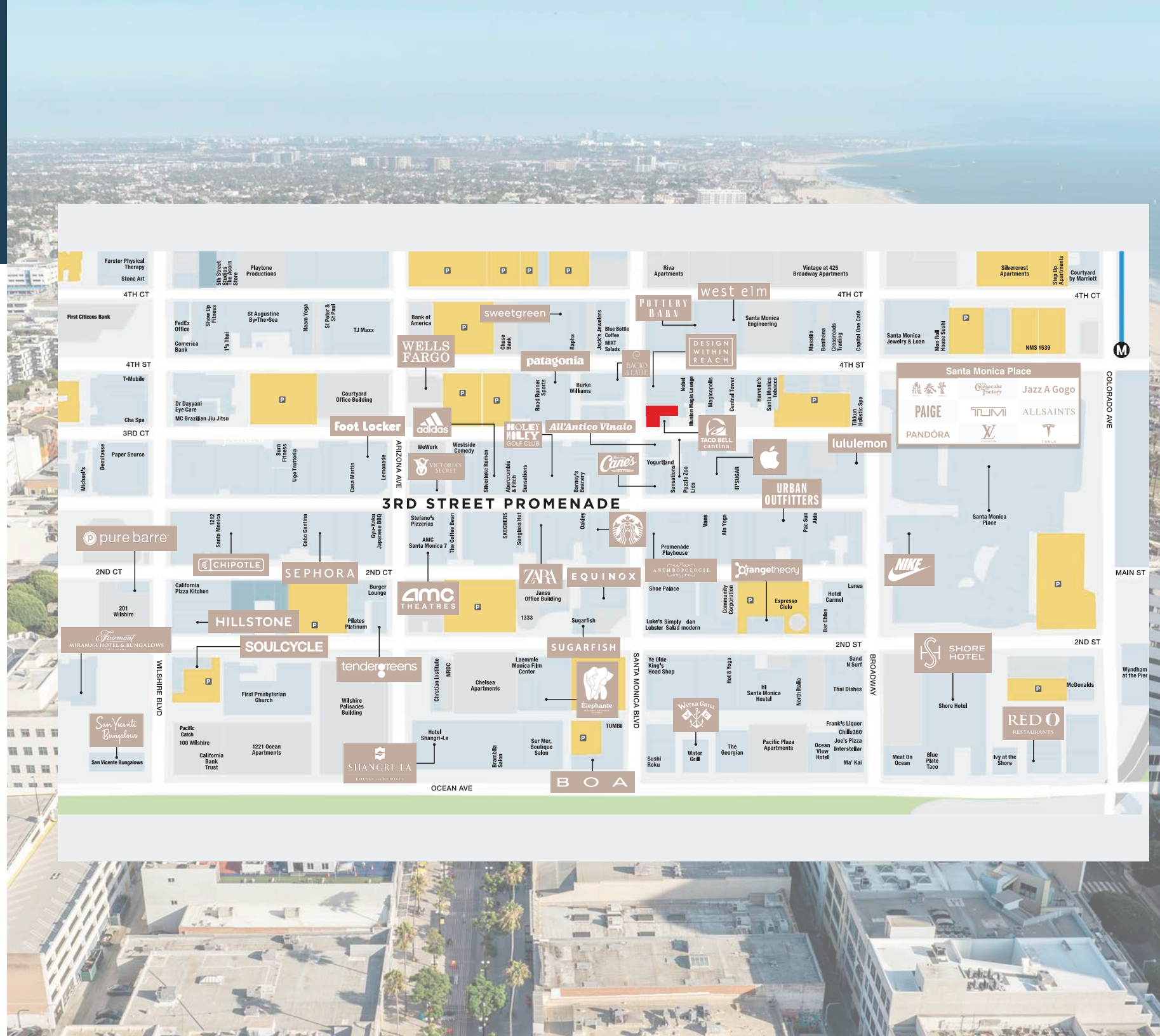


BLUE BOTTLE COFFEE

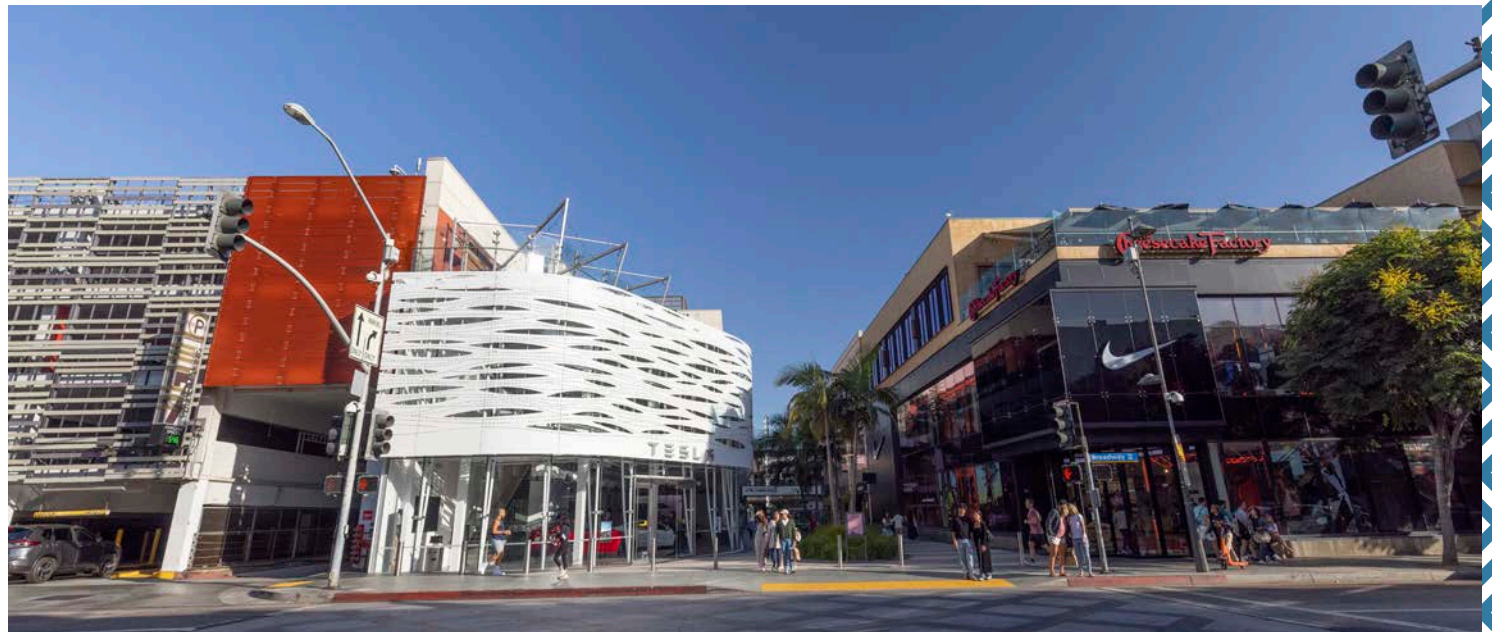


Burke Williams
simply massage

sweetgreen URBAN OUTFITTERS



NEIGHBORING
Retail



320 Santa Monica Blvd.



BLAKE
Kaplan

Managing Director
+1 909 702 3367
Blake.Kaplan@jll.com
Lic # 02001158

DREW
Olson

Vice President
+1 949 870 0565
Drew.Olson@jll.com
Lic # 02051219

ERIK
Westedt

Managing Director
+1 213 545 4500
Erik.Westedt@jll.com
Lic # 01372758

TATTIANNA
Sidhom

Associate
+1 323 404 7553
Tattianna.Sidhom@jll.com
Lic # 02442184

Although information has been obtained from sources deemed reliable, JLL does not make any guarantees, warranties or representations, express or implied, as to the completeness or accuracy as to the information contained herein. Any projections, opinions, assumptions or estimates used are for example only. There may be differences between projected and actual results, and those differences may be material. JLL does not accept any liability for any loss or damage suffered by any party resulting from reliance on this information. If the recipient of this information has signed a confidentiality agreement with JLL regarding this matter, this information is subject to the terms of that agreement. ©2026 Jones Lang LaSalle Brokerage, Inc. All rights reserved.