



For Lease

Guildford Office Park

15225 104th Avenue, Surrey, BC

Andrew Astles
Associate Vice President
+1 604 363 6673
andrew.astles@jll.com

jll.ca

Location Details

Strategically located at the Gateway to Surrey, Guildford Office Park is situated on the corner of 152nd Street and 104th Avenue with direct access to Hwy 1 via the 152nd on-ramp. Area amenities include restaurants, hotels and world class shopping at the newly renovated Guildford Town Centre. Guildford Office Park is also located next to Translink's Guildford Exchange with frequently scheduled bus routes to the Surrey Central SkyTrain Station.

Building Details



RECENTLY RENOVATED COMMON AREAS



BIKE LOCK-UP AREA IN UNGROUND PARKADE



CENTRAL LOCATION WITH IMMEDIATE ACCESS TO HIGHWAY 1



NEARBY AMENITIES

30 sec	Happy Jack's Cafe
1 min	Tim Hortons
2 min	Anytime Fitness
3 min	Guildford Sushi House
6 min	Guildford Food Court
6 min	Red Robin
7 min	Earls
8 min	The Taphouse

Strategically located at the Gateway to Surrey, Guildford Office Park is situated on the corner of 152nd Street and 104th Avenue with direct access to Hwy 1 via the 152nd on-ramp. Area amenities include restaurants, hotels and world class shopping at the newly renovated Guildford Town Centre. Guildford Office Park is also located next to Translink's Guildford Exchange with frequently scheduled bus routes to the Surrey Central SkyTrain Station.

Available Suites

SUITE	SF	AVAILABILITY	COMMENTS
308	2,687 s.f.	Immediately	Furniture available. New improvements built to a high standard, consisting of 7 offices, 8 workstations, large boardroom, and lunch room.
315	897 s.f.	Immediately	Reception, two offices and a kitchenette.
318	2,549 s.f.	Flexible	The layout consists of four offices, large boardroom, kitchen/lounge area, ample open workspace accommodating 15+ desks, and a server and storage room.

Salient Details

Net Rate:	Please contact listing agent
Additional Rent (2026 Estimate):	\$16.52 psf/pa
Parking:	1 Stall / 500 s.f. at market rates

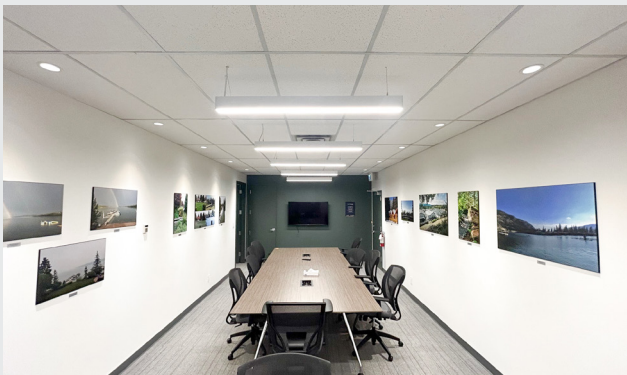
Tenant Improvement

Tenant improvement allowance is available for tenants who would like to customize their space.

Please contact listing agent for details.



Suite 308 Interior Photos



For Lease

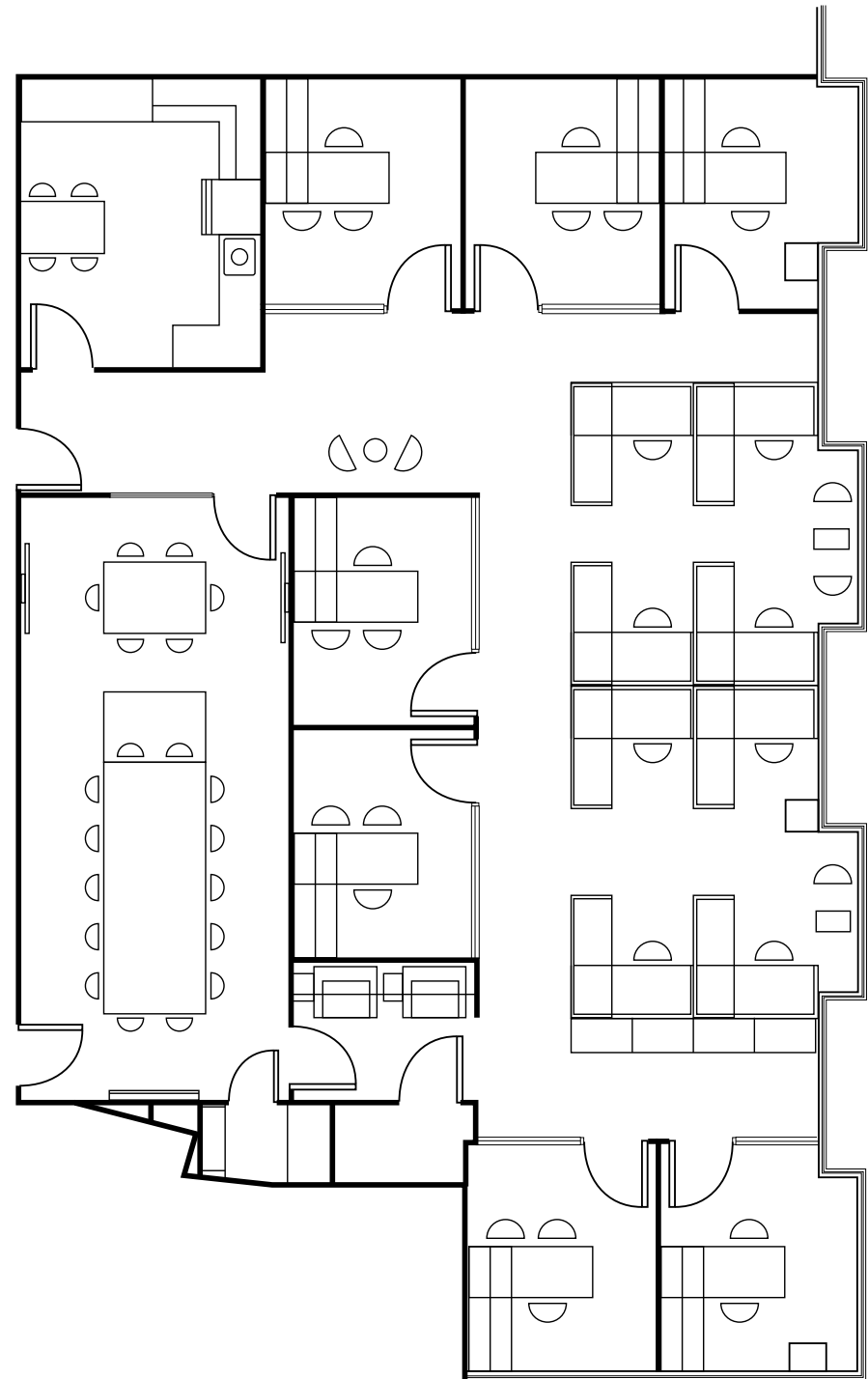
15225 104th
Avenue

SUITE 308

2,867 SF

Furniture available.

New improvements built to a high standard,
consisting of 7 offices, 8 workstations, large
boardroom, and lunch room.



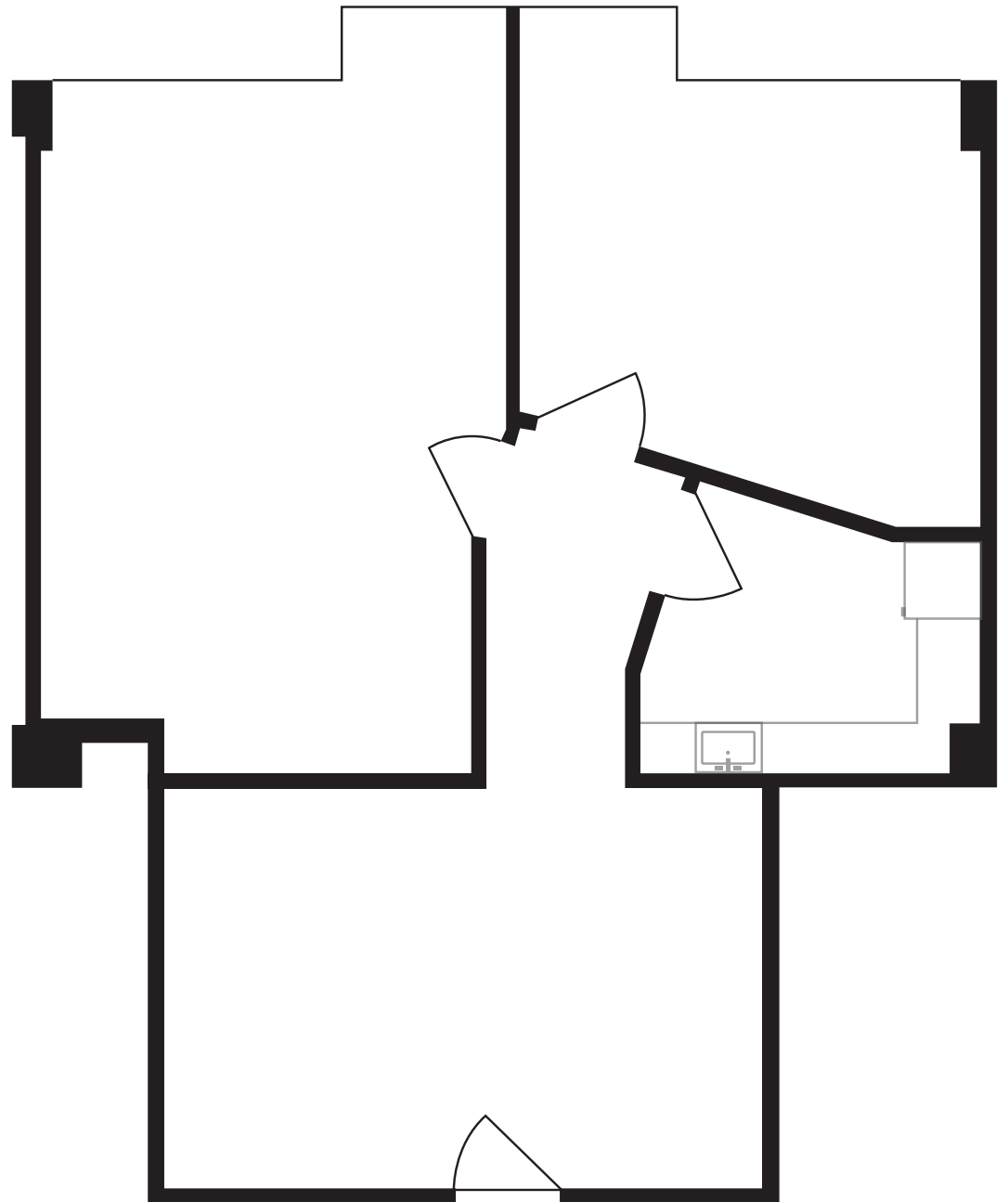
For Lease | 15225 104th Avenue

For Lease

15225 104th
Avenue

SUITE 315
897 SF

Reception, two offices and a
kitchenette.



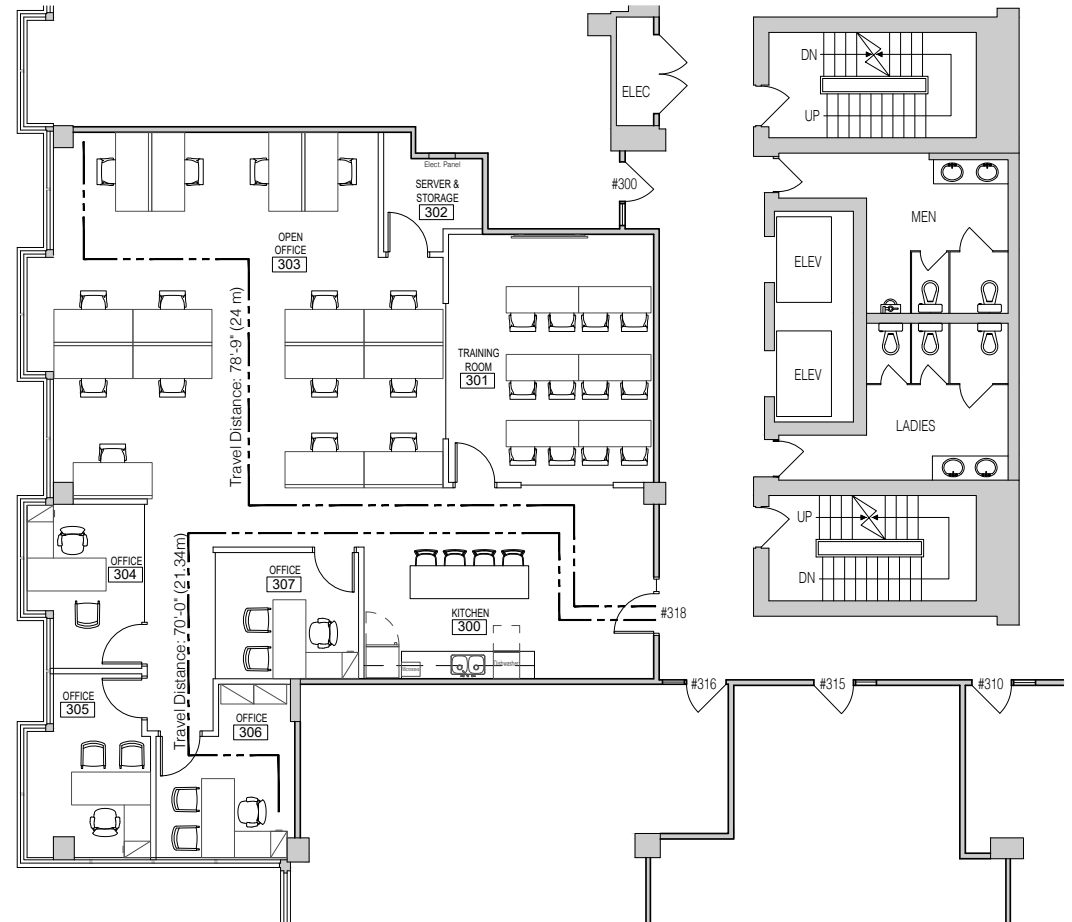
For Lease

15225 104th
Avenue

SUITE 318

2,549 SF

New improvements in place with elevator exposure, LED lighting, and glass walls throughout. The layout consists of four offices, large boardroom, kitchen/lounge area, ample open workspace accommodating 15+ desks, and a server and storage room.



Suite 318 Interior Photos





Andrew Astles

Associate Vice President
+1 604 363 6673
andrew.astles@jll.com

**Jones Lang LaSalle Real Estate
Services Inc.**

510 West Georgia Street, Suite 2150
Vancouver, BC V6B 0M3

Although information contained herein has been obtained from sources deemed reliable, the owner, Jones Lang LaSalle Real Estate Services, Inc. ("JLL Canada"), and/or their representatives, brokers or agents make no guarantees as to the accuracy of the information contained herein, and offer the property/portfolio without express or implied warranties of any kind. The property/portfolio may be withdrawn without notice. If the recipient of this information has signed a confidentiality agreement regarding this matter, this information is subject to the terms of that agreement.

