



For Sale

Former USPS Location

301 S Main St | Poplarville, MS 39470

301 S Main St / Poplarville, MS 39470

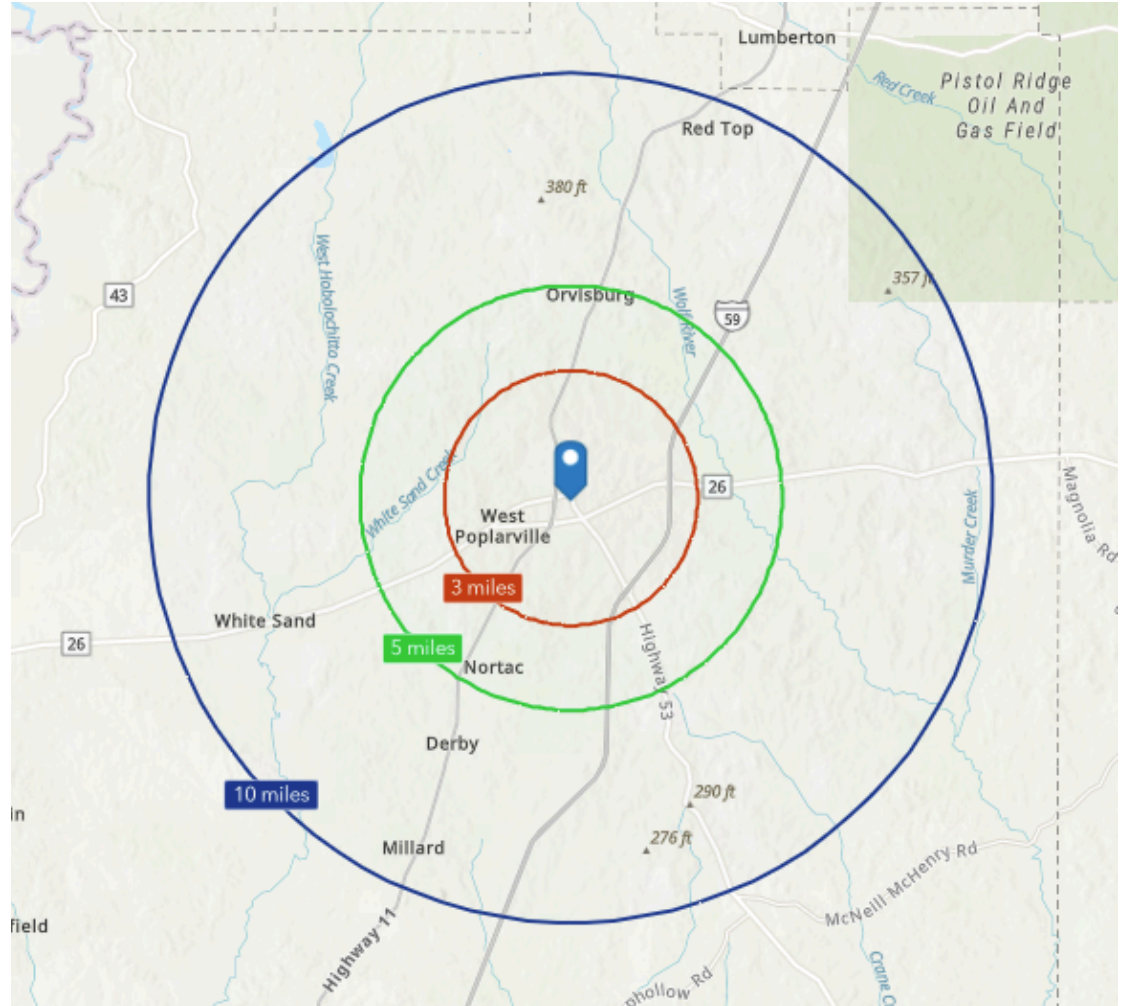
For Sale

Property Highlights

- Building Size: 3,540 sq ft
- Lot Size: 0.43 Acres





Historic 1940 USPS facility in downtown Poplarville with significant redevelopment potential. The 3,540 SF building on an 18,600 SF lot has a low FAR of 0.19, providing substantial room for future development.

This opportunity is best suited for investors focused on land value, demolition/rebuild scenarios, or long-term land banking in a growing Mississippi market.

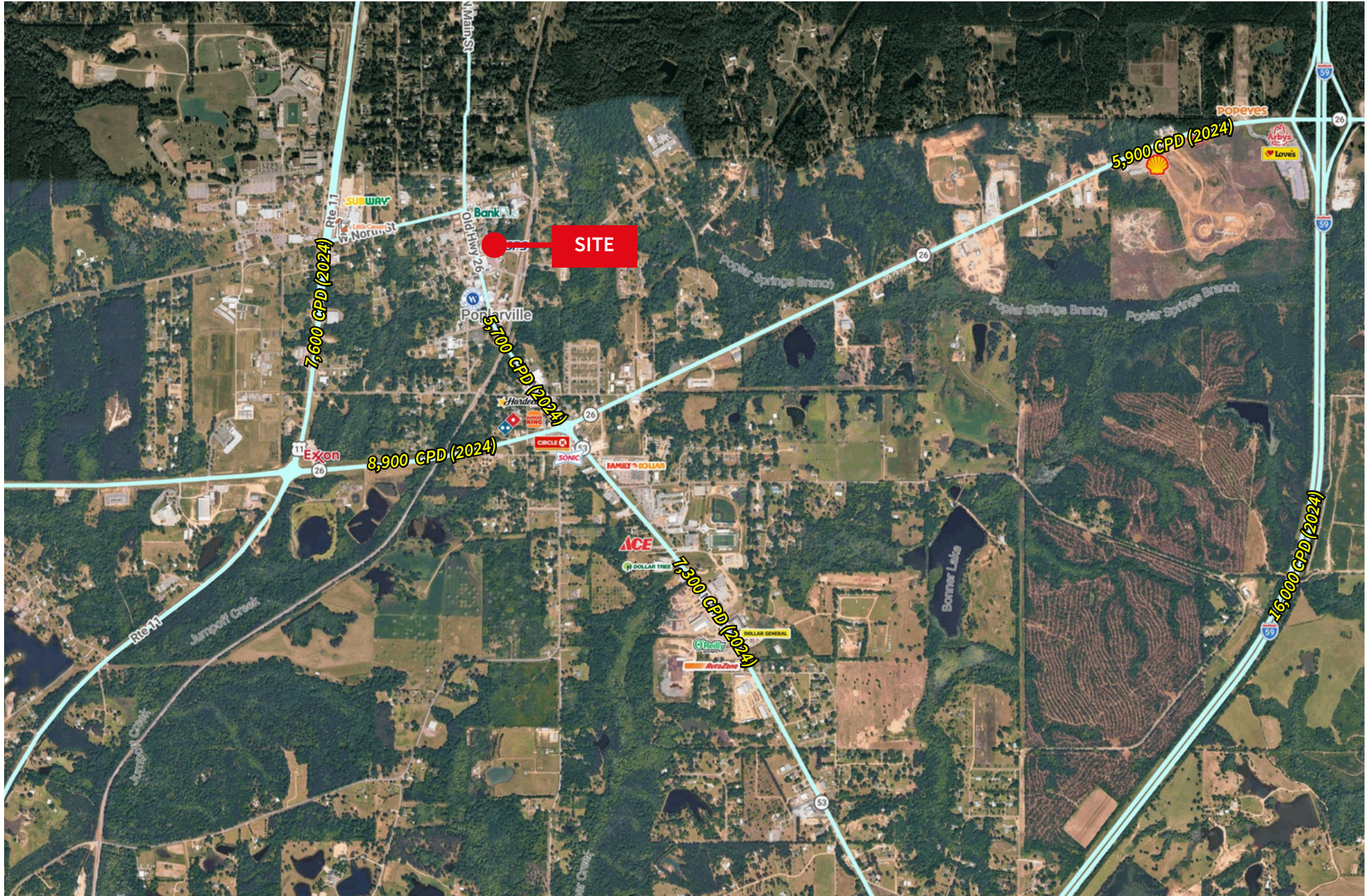


Market Highlights

- Prime downtown location on South Main Street with 6,107 vehicles/day traffic
- Growing market: 6.52% population growth and 7.11% household growth projected through 2030

	3 Miles	5 Miles	10 Miles
 Total Population	4,432	6,213	10,721
 Total Daytime Population	5,098	6,238	9,506
 Median Household Income	\$52,255	\$52,119	\$56,708
 Median Age	34.4	37.8	41.5

Source: Esri, 2026



Thank you

Contact for more information:



Buff Teague

Executive Managing Director

(251) 341-1600

buff.teague@jll.com