



# Fulton Market Retail Space for Sublease

Join Raising Cane's Chicken Fingers  
820 W Randolph St  
Chicago, IL 60607

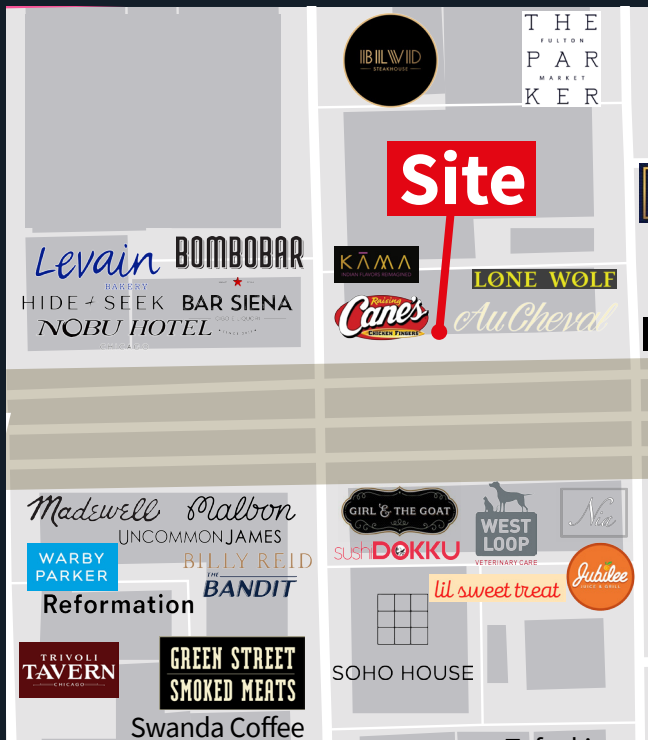


**Patrick Owens**  
Managing Director  
+1 312 228 3028  
patrick.owens@jll.com

**Shannon Pope**  
Managing Director  
+1 312 228 2050  
shannon.pope@jll.com

# Property overview & demographics

- Two level small shop space for sublease at premier corner of Randolph St and Green St.
- Centrally located in the heart of Fulton Market’s restaurant and entertainment district.
- Adjacent to flagship Raising Cane’s Chicken Fingers.
- Excellent visibility from entire intersection.
- Black Iron infrastructure stubbed to space.

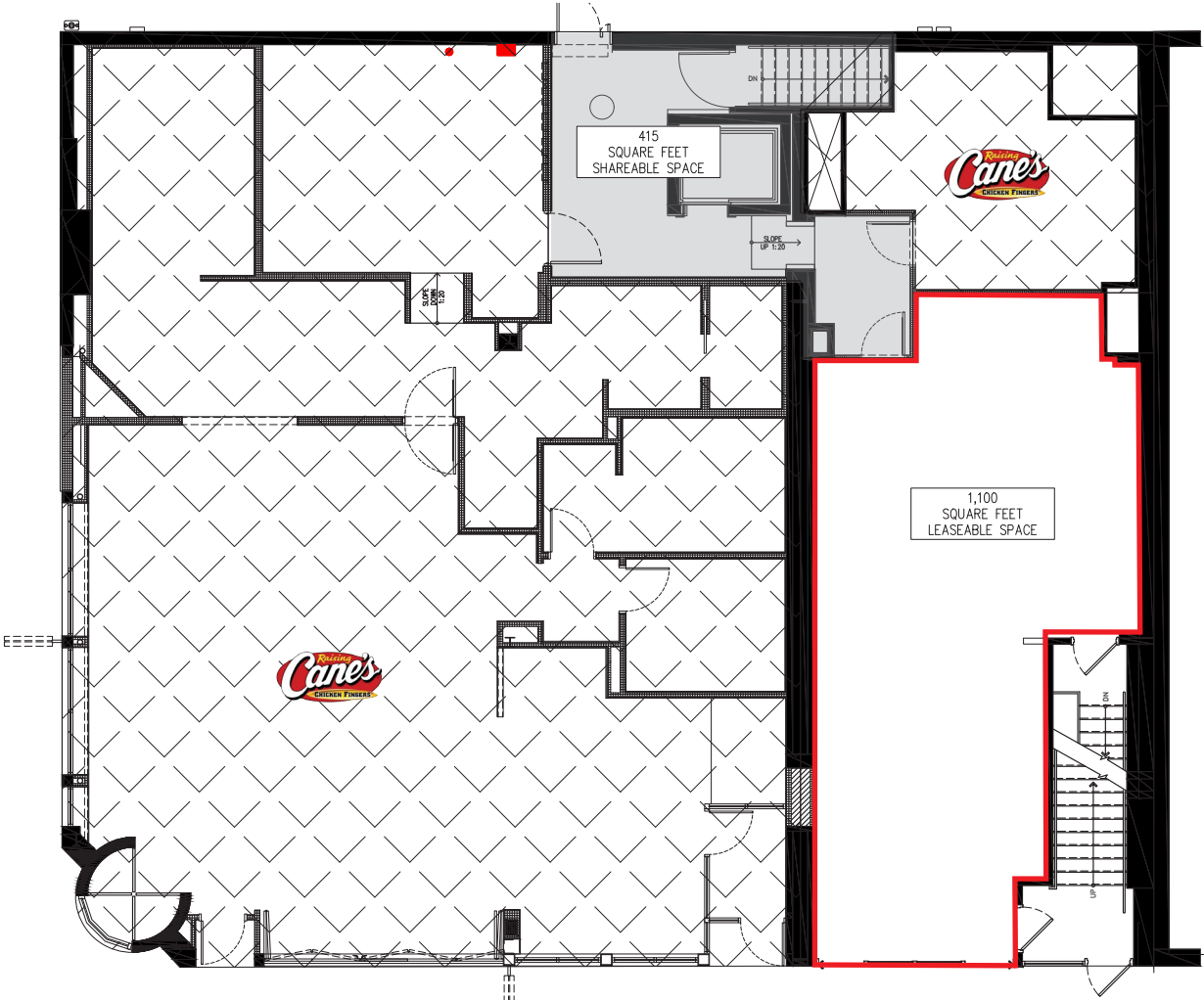


<b>Address</b>	820 W Randolph St Chicago, IL 60607
<b>Size</b>	First Floor: 1,100 SF Second Floor: 1,500 SF Basement: 420 SF
<b>Asking rent</b>	First Floor: \$120.00 PSF Gross Second Floor: \$60.00 PSF Gross
<b>Status</b>	Vacant
<b>Possession</b>	Immediate

### Area retailers



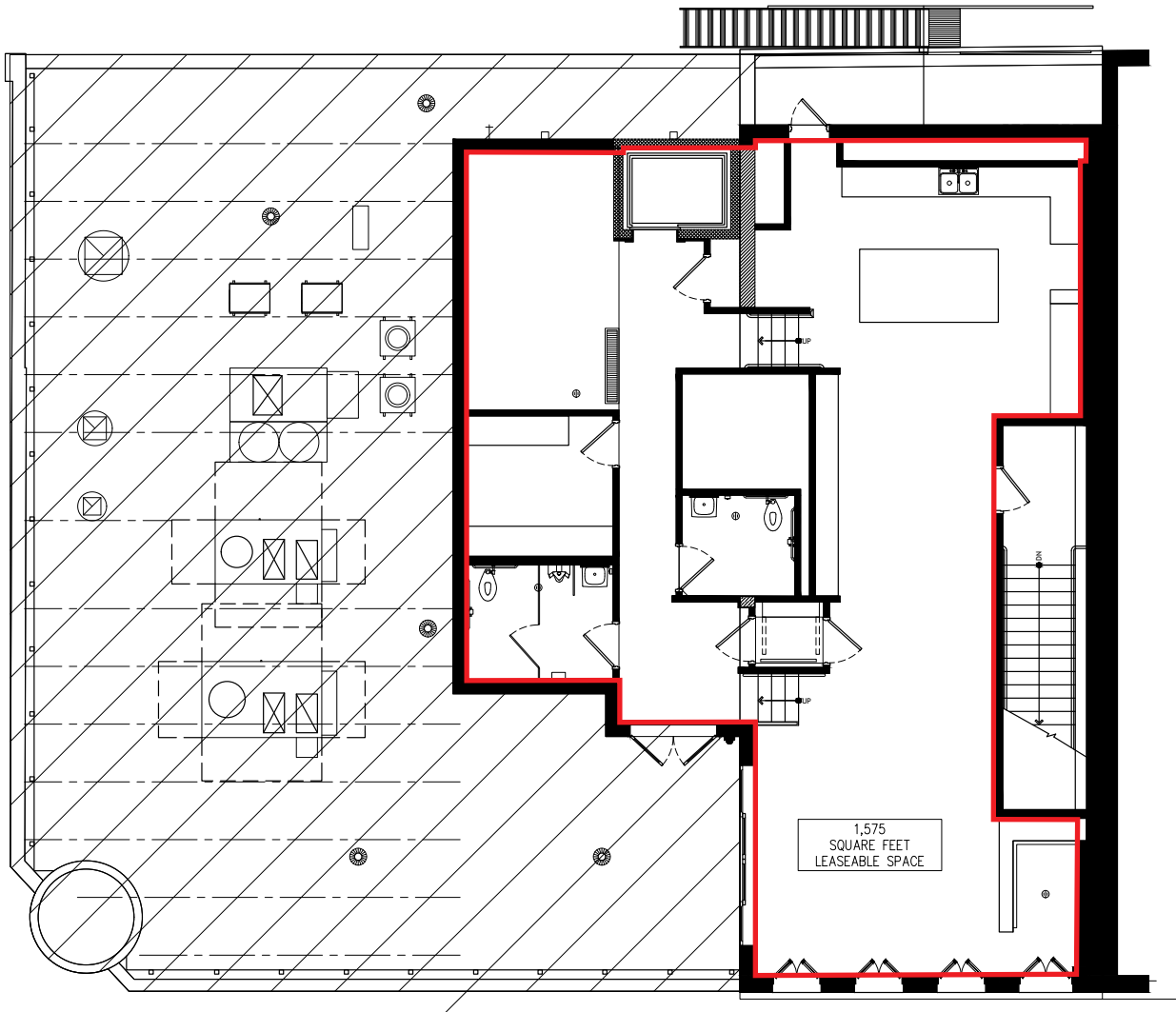
	.25 mile	.5 mile	1 mile
<b>Population</b>	5,106	25,513	70,376
<b>Daytime population</b>	12,868	68,993	349,753
<b>Avg household income</b>	\$218,289	\$192,688	\$196,863
<b>Households</b>	3,145	15,821	42,318



CURRENT FIRST FLOOR PLAN  
SCALE: NTS



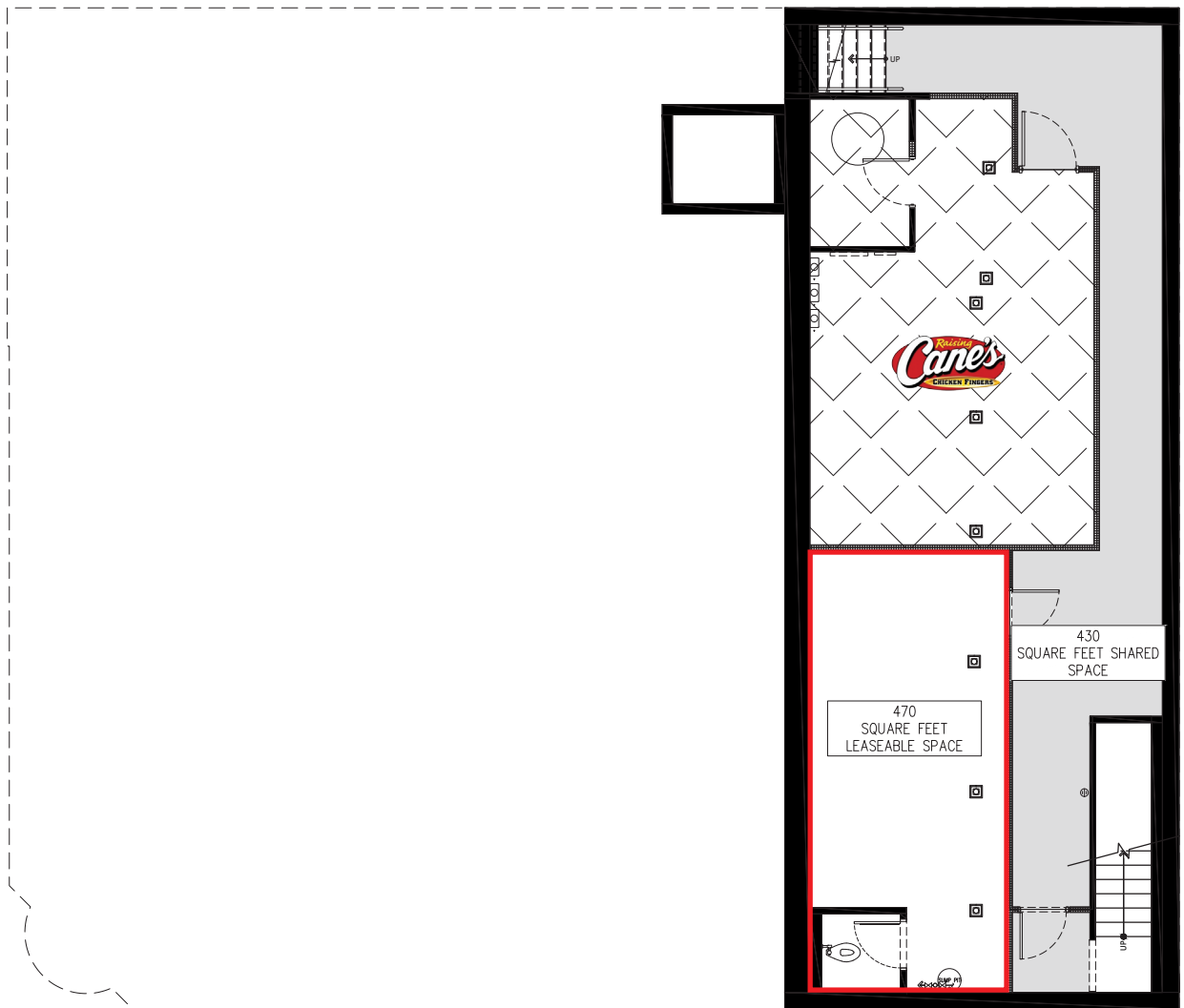
# Site plan



**SECOND FLOOR PLAN**  
SCALE: NTS



# Site plan

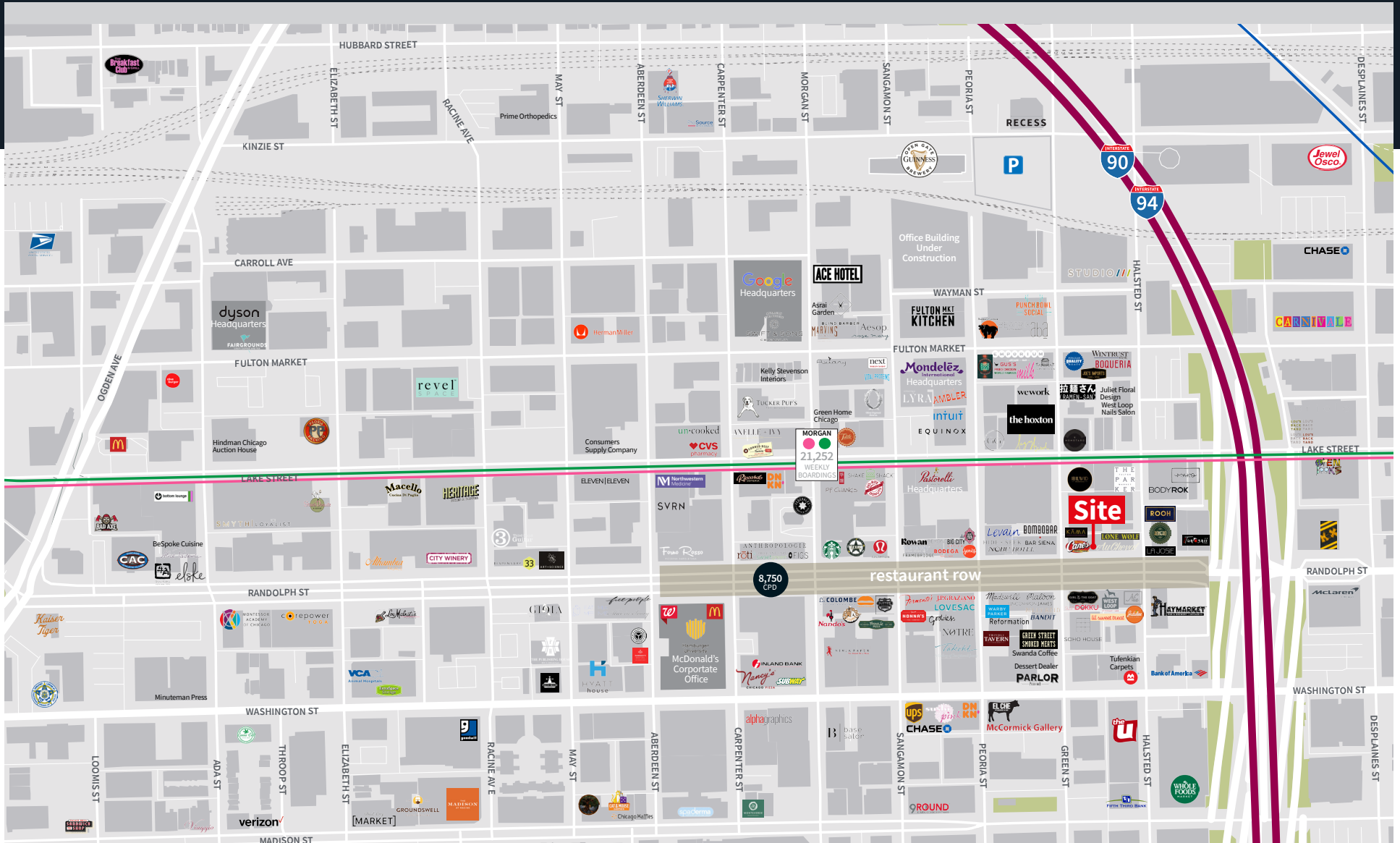


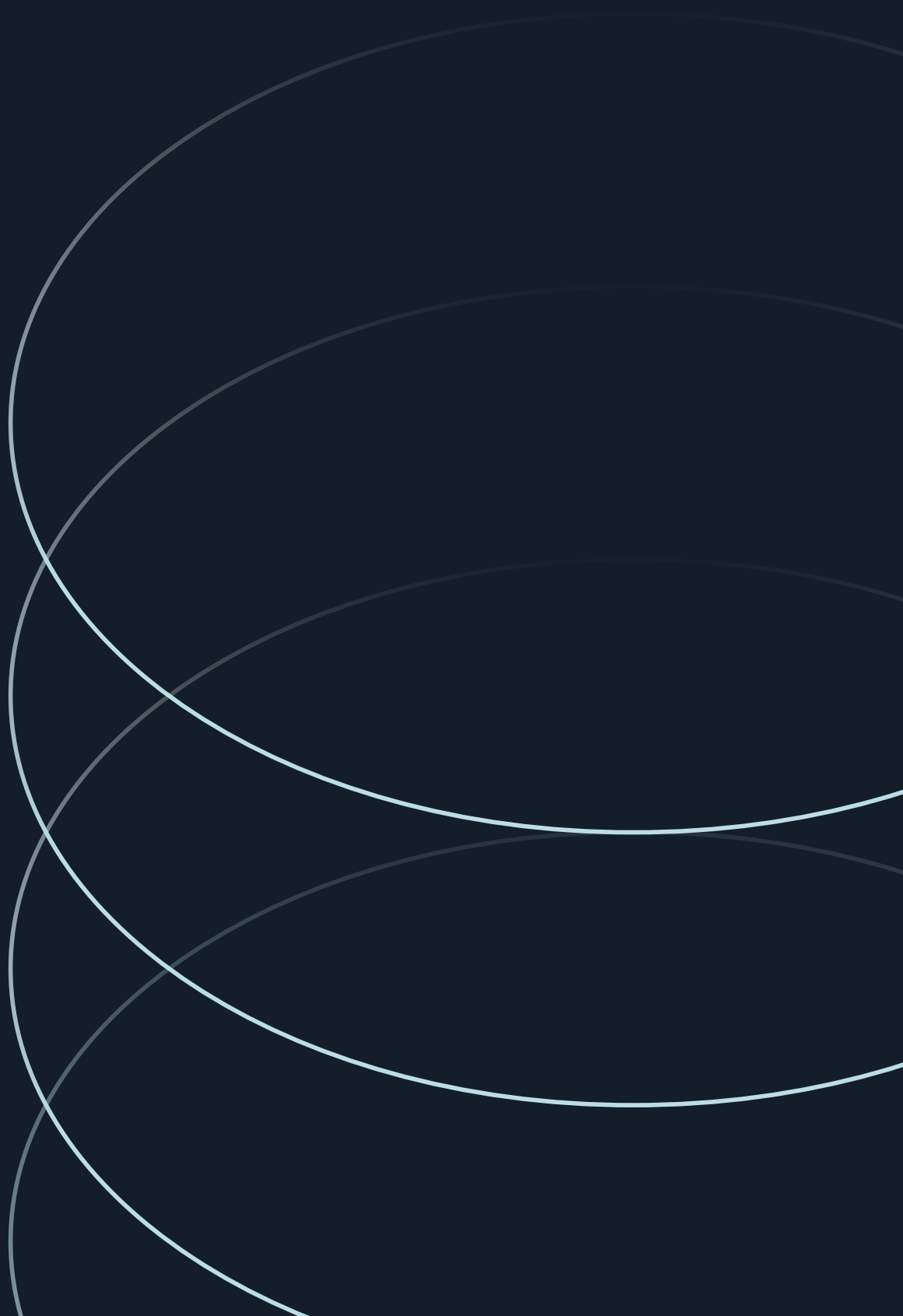
**BASEMENT FLOOR PLAN**

SCALE: NTS

# Chicago, IL

Retail trade area





**Patrick Owens**

Managing Director  
+1 312 228 3028  
patrick.owens@jll.com

**Shannon Pope**

Managing Director  
+1 312 228 2050  
shannon.pope@jll.com