



Experimental  
Holdings



ONE  
CROWNE  
POINT

# ONE CROWNE POINT

**Sharonville, Ohio**

62,787 SF Class A Office Space for Lease

# WELCOME TO **ONE CROWNE POINT**

## **Available**

62,787

## **Parking**

4.5/1,000 | 287 surface spaces

## **Elevators**

Two hydraulic elevators (3,500 capacity);  
one can be converted to freight elevator

## **Security**

Key card access on exterior doors

## **Electric & Natural Gas**

Duke Energy

## **Water**

Cincinnati Water Works

## **Sewer**

Metropolitan Sewer District

## **Electric Service**

2,000 AMP - 277/ 480 Volt - 3 phase Service

## **HVAC**

Electric hydronic system to air source heat pumps  
(cooling tower replaced in 2005)

## **Safety**

Fully wet sprinklered and centrally monitored  
(smoke & pull stations with annunciator panels  
and notifier panel)

## **Telecom & Data**

Time Warner Cable, Cincinnati Bell Tech Svcs



**ONE CROWNE POINT**

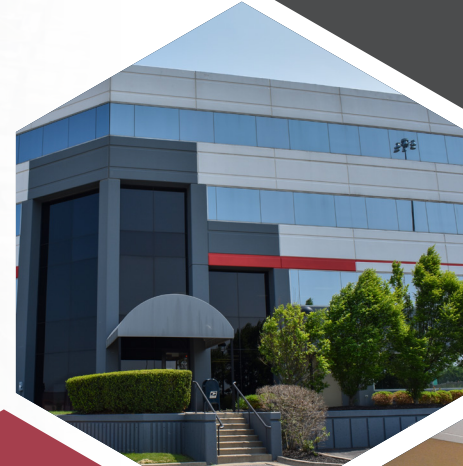
**62,787 SF**

**ONE CROWNE POINT**

75



**Strategic location in  
the Cincinnati-Dayton  
Aviation Corridor**



**Large, flexible  
floor plates**



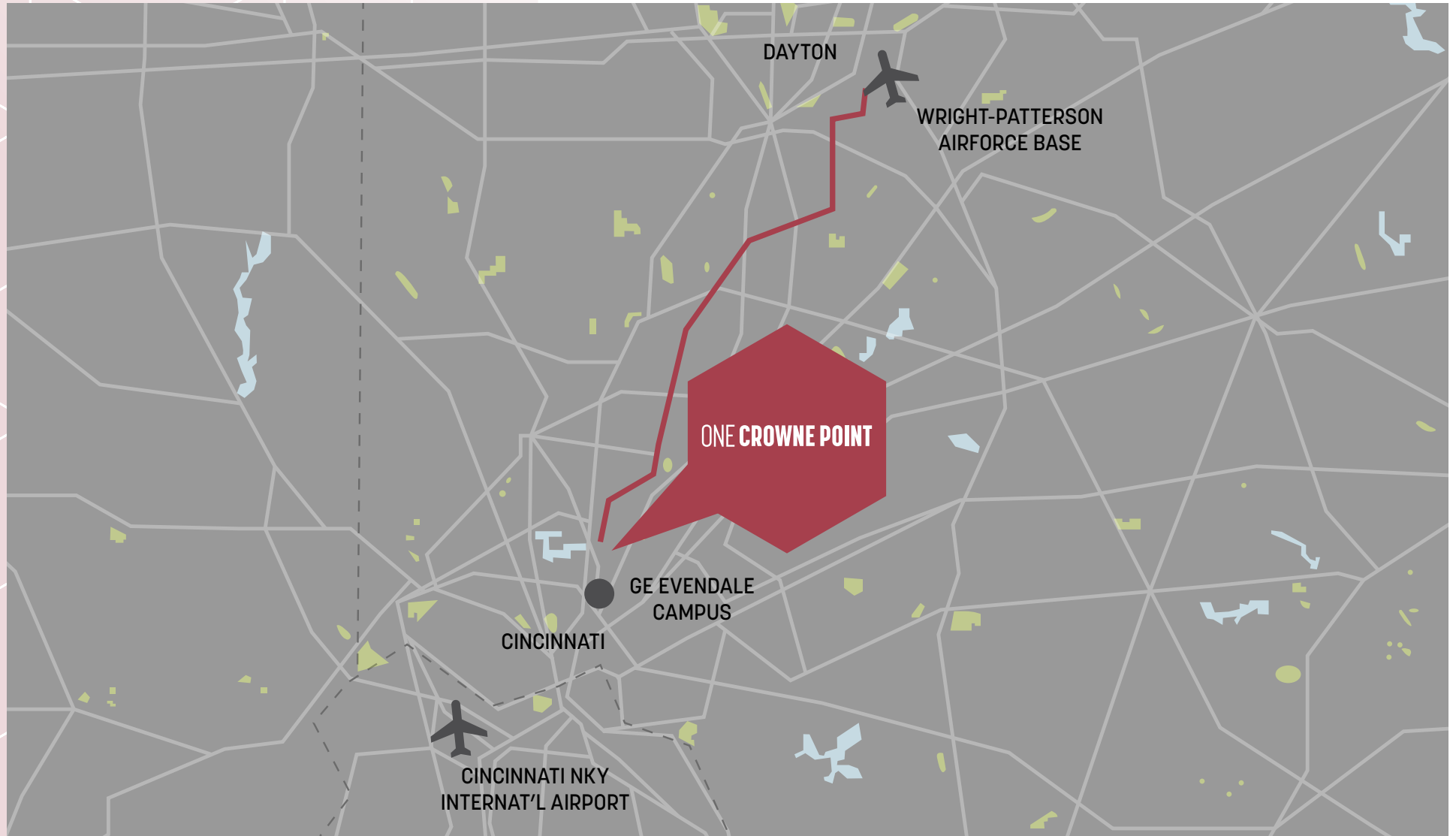
**Prime visibility and  
access from I-75**

**Located 2 miles from  
GE Aerospace's HQ**



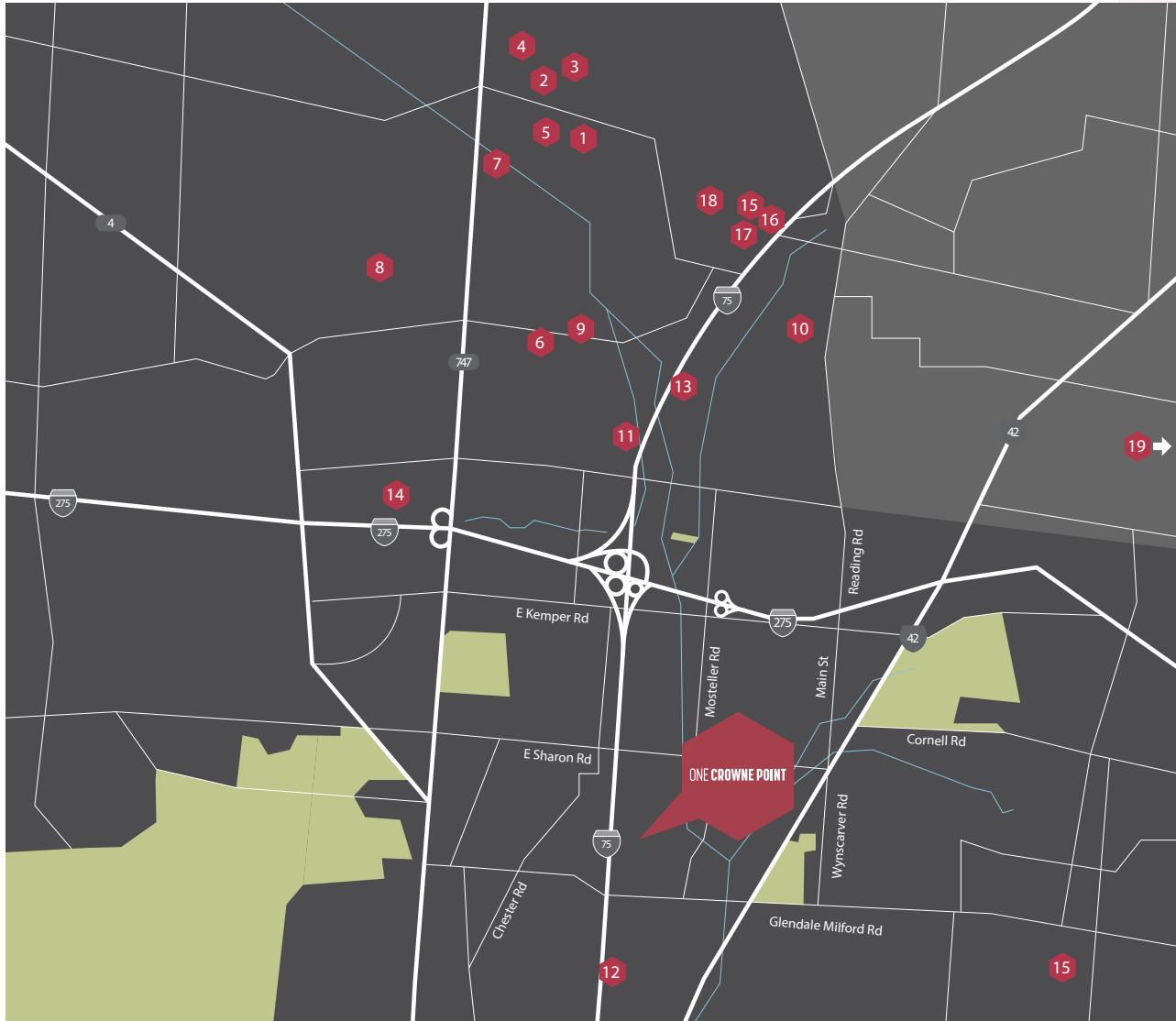
# PRIME **LOCATION** ON THE **CINCINNATI-DAYTON AVIATION CORRIDOR**

The Cincinnati-Dayton Aviation Corridor boasts an experienced workforce, supply chain support, and five of the nation's top 50 universities for Aerospace Engineering within 200 miles of Cincinnati. Highlighted by Wright-Patterson Airforce Base in Dayton and the GE Campus in Cincinnati, these areas have been a hotspot for aerospace firms for the last 100 years.



# CORPORATE NEIGHBORS

One Crowne Point enjoys close proximity to major corporate players in the northern Cincinnati area.

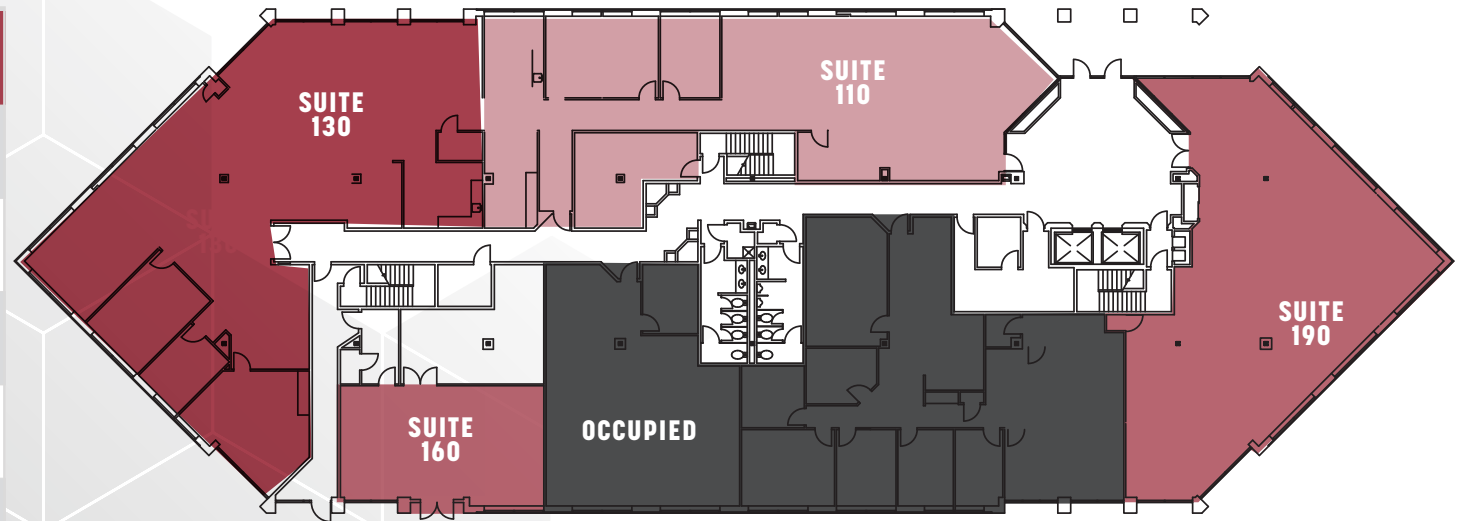


1. Mondelēz International Foods
2. Ryan Homes
3. Procter & Gamble
4. Total Quality Logistics
5. GM Supply Warehouse
6. Isuzu Logistics
7. Georgia-Pacific
8. Honeywell Intelligrated
9. totes Isotoner Corporation
10. Amazon
11. CTL Aerospace Inc
12. GE Aviation
13. Humana Pharmacy
14. Macy's
15. Contech Engineered Solutions
16. Progressive Insurance
17. Pilot Chemical Company
18. Kimberly-Clark
19. General Electric Co

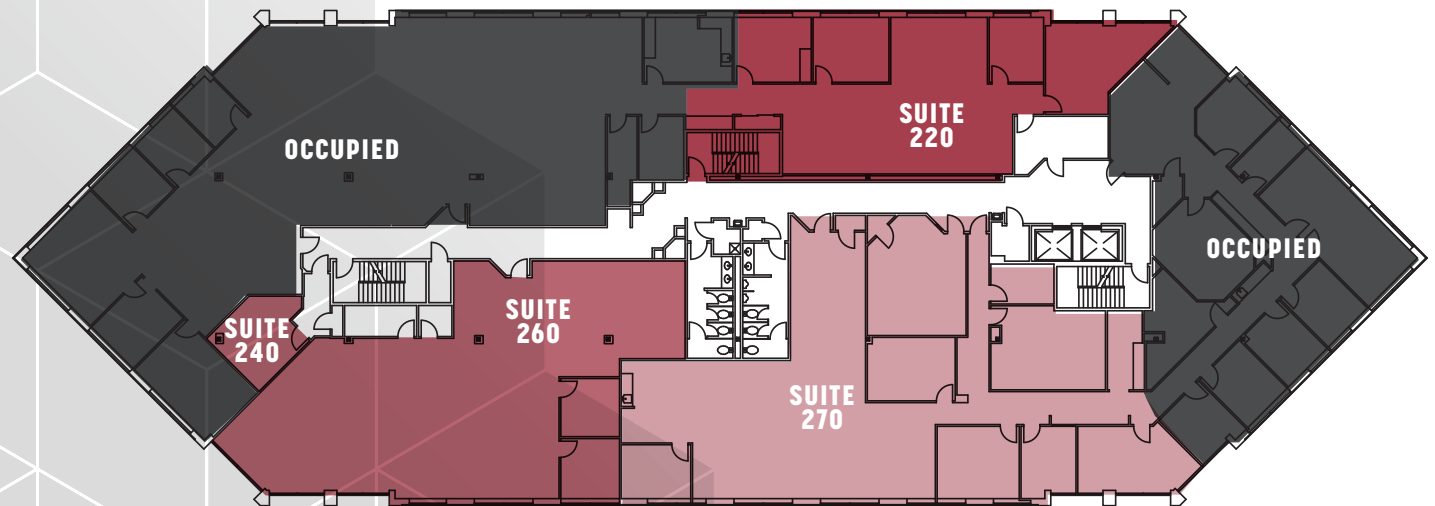
# PROPERTY **AVAILABILITY**

Suite	Size (SF)
110	3,111
130	4,288
160	1,605
190	3,054
220	2,477
240	336
260	3,268
270	4,564

## FLOOR ONE



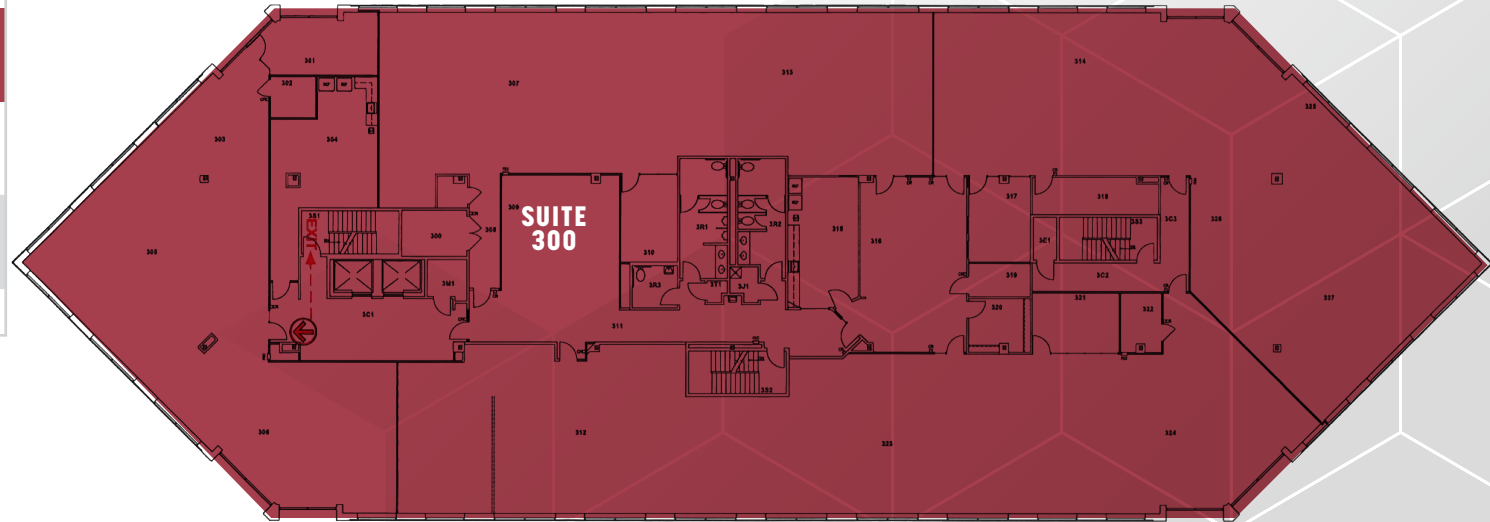
## FLOOR TWO



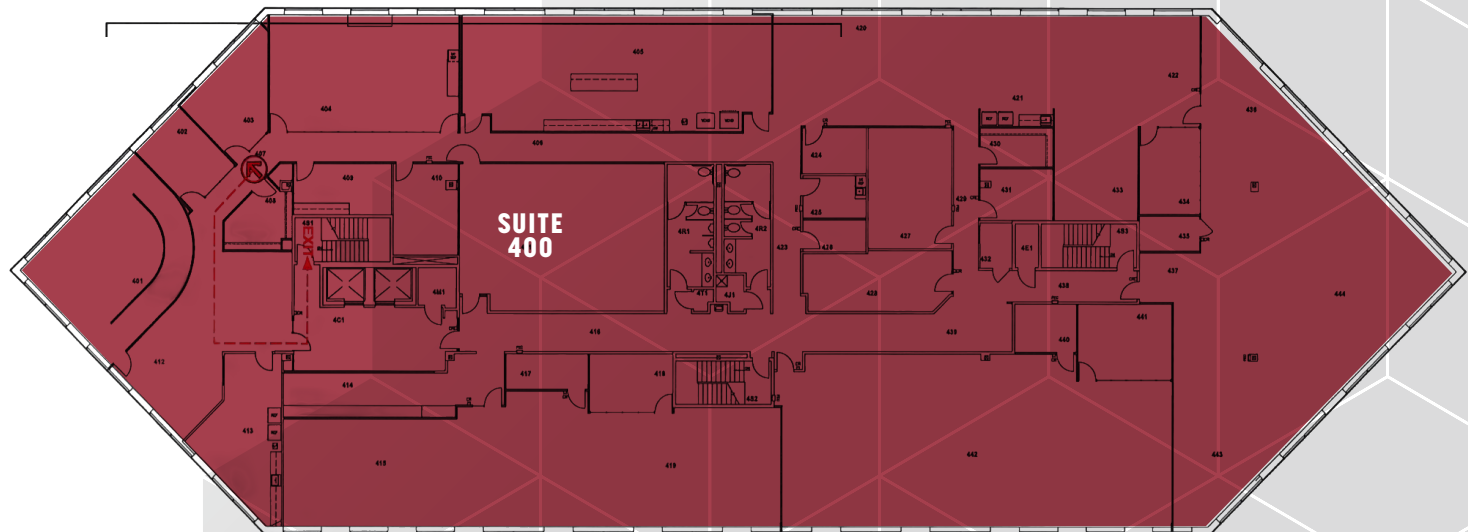
# PROPERTY **AVAILABILITY**

## FLOOR **THREE**

Suite	Size (SF)
300	20,042
400	20,042



## FLOOR **FOUR**





**Todd Pease**  
**+1 513 297 2506**  
**todd.pease@jll.com**

**Tom Fairhurst**  
**+1 513 297 2511**  
**tom.fairhurst@jll.com**

*JLL disclaimer: Although information has been obtained from sources deemed reliable, neither Owner nor JLL makes any guarantees, warranties or representations, express or implied, as to the completeness or accuracy as to the information contained herein. Any projections, opinions, assumptions or estimates used are for example only. There may be differences between projected and actual results, and those differences may be material. The Property may be withdrawn without notice. Neither Owner nor JLL accepts any liability for any loss or damage suffered by any party resulting from reliance on this information. If the recipient of this information has signed a confidentiality agreement regarding this matter, this information is subject to the terms of that agreement. ©2023 Jones Lang LaSalle IP, Inc. All rights reserved.*

