

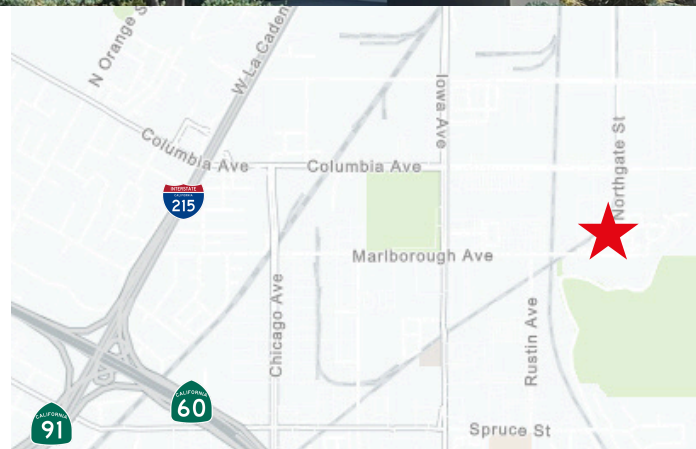
925 Marlborough Ave Riverside, CA

±42,630 SF available for sublease
Longer term/direct lease possible



Property specifications

- 2,902 SF office space
- 6 dock high doors
 - 3 with pit levelers
 - 2 interior truck wells
- 1 grade level door
- 26' clear height
- ESFR sprinkler system
- 120' truck court
- 1,000 - 1,200a/277 - 480v power
- Current sublease term through September 20, 2027



Brian Thene

+1 909 467 6859

brian.thene@jll.com

CA DRE #02090362

Hunter McDonald

+1 909 467 6873

hunter.mcdonald@jll.com

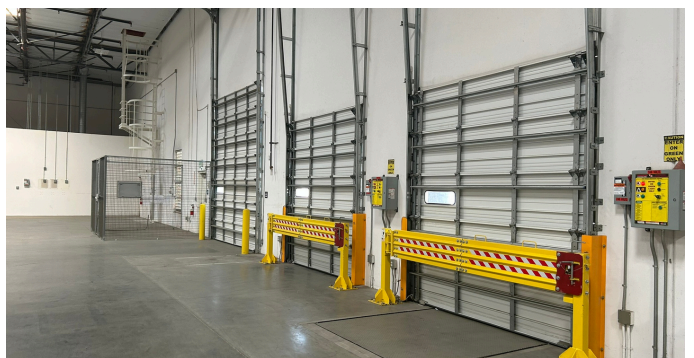
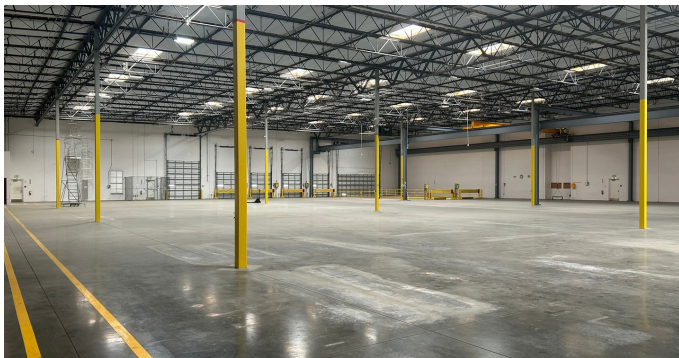
CA DRE #01879029

Dya Navarrete

+1 909 467 6875

dya.navarrete@jll.com

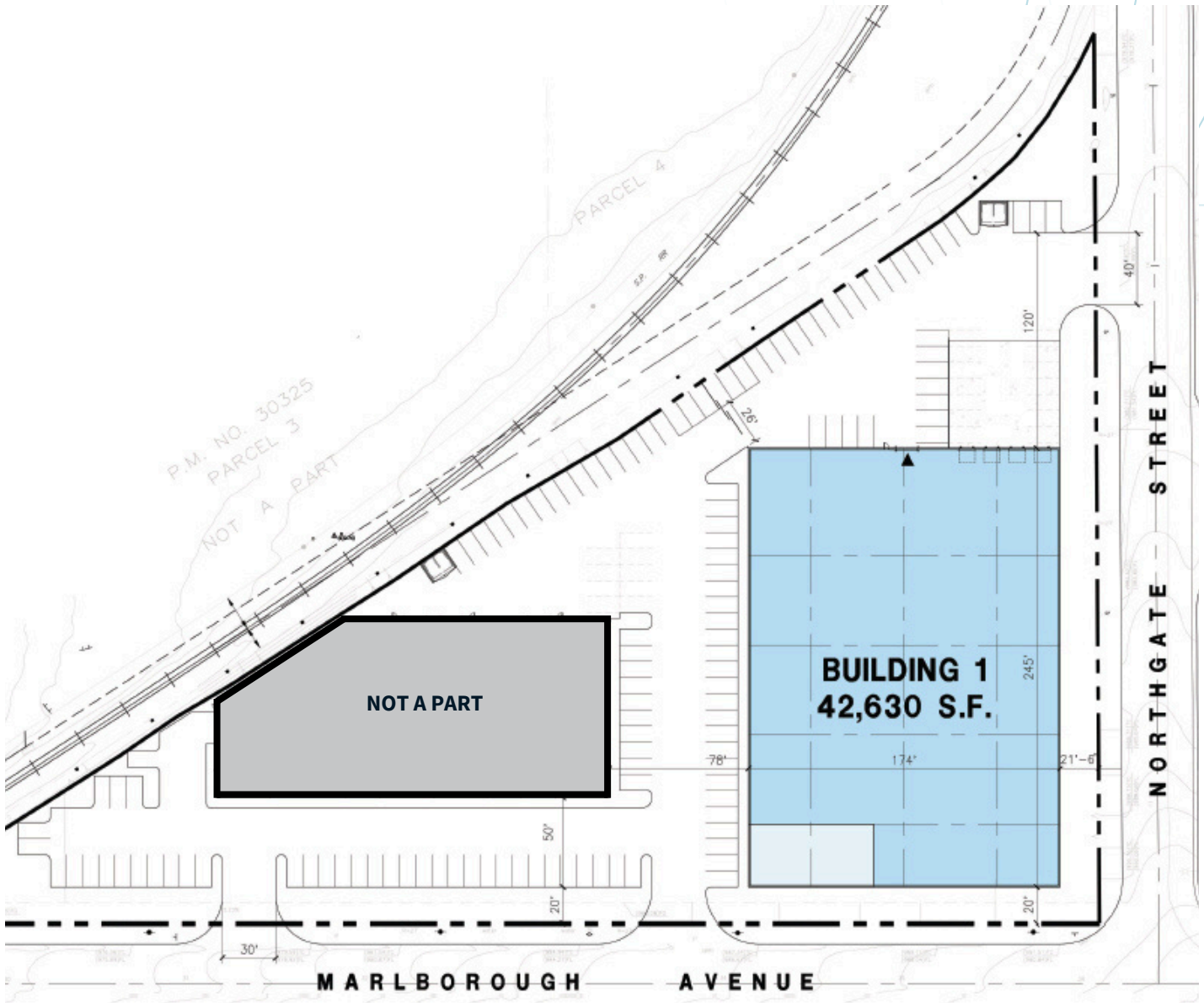
CA DRE #02078833



Brian Thene
+1 909 467 6859
brian.thene@jll.com
CA DRE #02090362

Hunter McDonald
+1 909 467 6873
hunter.mcdonald@jll.com
CA DRE #01879029

Dya Navarrete
+1 909 467 6875
dya.navarrete@jll.com
CA DRE #02078833



Brian Thene
+1 909 467 6859
brian.thene@jll.com
CA DRE #02090362

Hunter McDonald
+1 909 467 6873
hunter.mcdonald@jll.com
CA DRE #01879029

Dya Navarrete
+1 909 467 6875
dya.navarrete@jll.com
CA DRE #02078833