




**For Lease**

# 2900 Thérèse-Casgrain

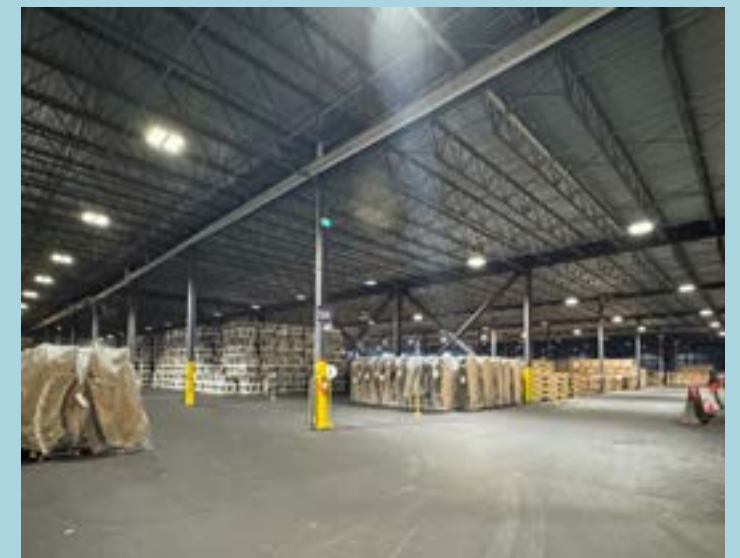
Drummondville, Québec

Unheated warehouse of 220,000 SF. Ideal for distribution and temporary storage. Flexible term and configuration.

 **JLL** SEE A BRIGHTER WAY

# Building Overview

<b>Property</b>	2900 Thérèse-Casgrain
<b>Lot Number</b>	6 623 836
<b>Year Built</b>	2021
<b>Available Area</b>	Up to 220,017 SF (demisable)
<b>Clear Height</b>	21'
<b>Available Doors</b>	15 Dock doors, 1 oversized Grade door
<b>Heated Area</b>	24,090 SF
<b>Office Area</b>	7,519 SF
<b>Trailer Parking</b>	Available on site



# Financial Overview



**Occupancy Date**

July 1<sup>st</sup>, 2026



**Asking rent**

\$12.00 Gross



**15 dock doors and trailer parking**



**Flexible demising configuration**



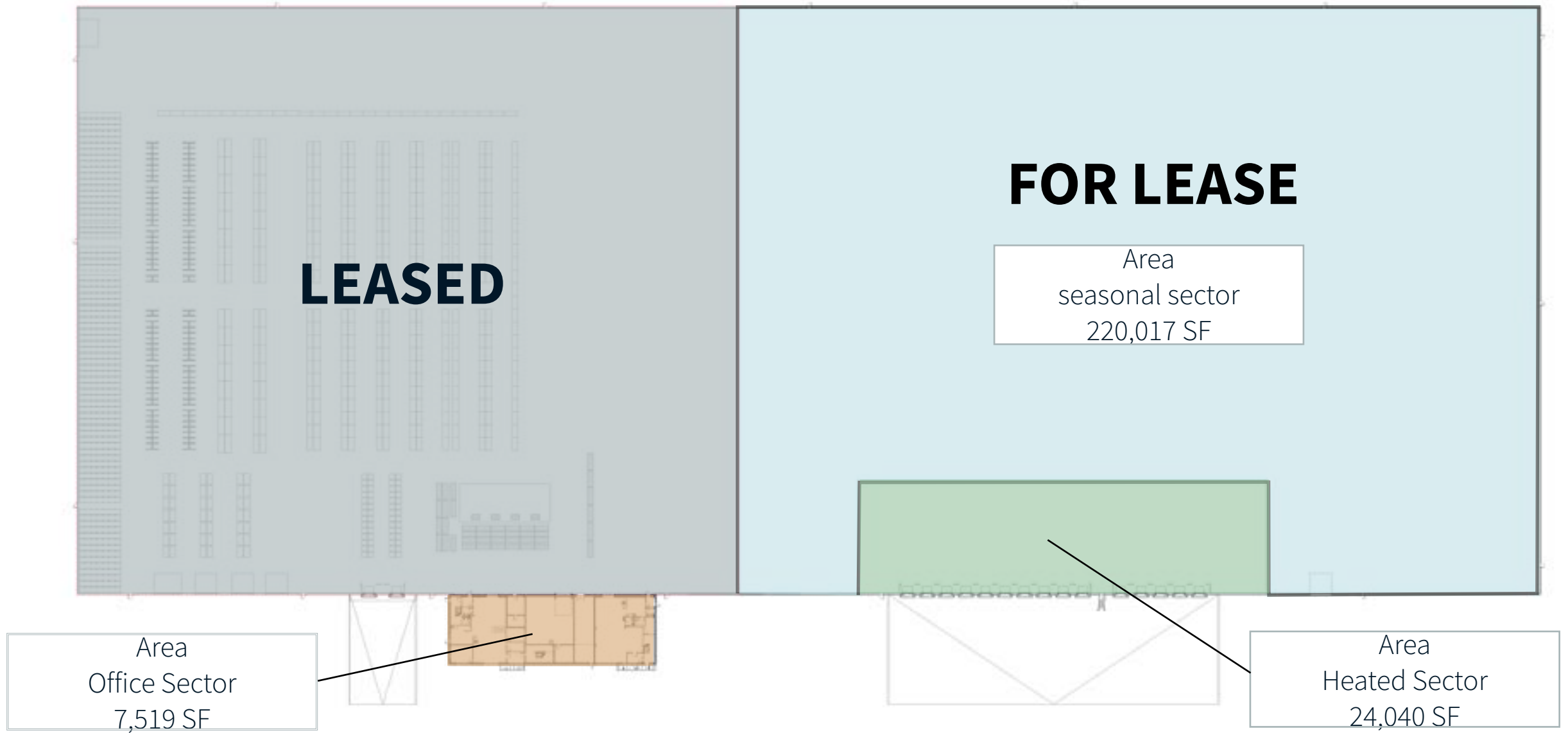
**Easy access to Highway 55**



**Flexible Term**



# Site Plan



# Site Overview



# 2900 Thérèse- Casgrain

Drummondville, Québec

## For more information, please contact:

<b>Dominic Bonin</b> Senior Vice-President dominic.bonin@jll.com +1 514 206 3595	<b>Avi Cohen</b> Associate Vice-President avi.cohen@jll.com +1 514 827 2212	<b>Mathieu Veilleux*</b> Senior Vice-President mathieu.veilleux@jll.com +1 418 570 4925
---	--	--

\*Real Estate Broker acting with the business corporation Mathieu Veilleux Inc.

This publication is the sole property of Jones Lang LaSalle and must not be copied, reproduced or transmitted in any form or by any means, either in whole or in part, without the prior written consent of Jones Lang LaSalle. The information contained in this publication has been obtained from sources generally regarded to be reliable. However, no representation is made, or warranty given, in respect of the accuracy of this information. We would like to be informed of any inaccuracies so that we may correct them. Jones Lang LaSalle does not accept any liability in negligence or otherwise for any loss or damage suffered by any party resulting from reliance on this publication. Any opinion or estimate of value of any asset in this presentation is based upon the high-level preliminary review by JLL. It is not the same as the opinion of value in an appraisal developed by a licensed appraiser under the Uniform Standards of Professional Appraisal Practice. JLL expressly disclaims any liability for any reliance on any opinion or estimate of value in this presentation by any party. Copyright © Jones Lang LaSalle IP, Inc. 2026 Jones Lang LaSalle Real Estate Services, Inc. (Real Estate Agency)

