

Second Generation Space. First-Class Opportunity.

In the Heart of San Francisco's Financial District

252
CALIFORNIA STREET



252 California Street, San Francisco, CA

Jone Lang LaSalle Brokerage, Inc. Real Estate License #01856260



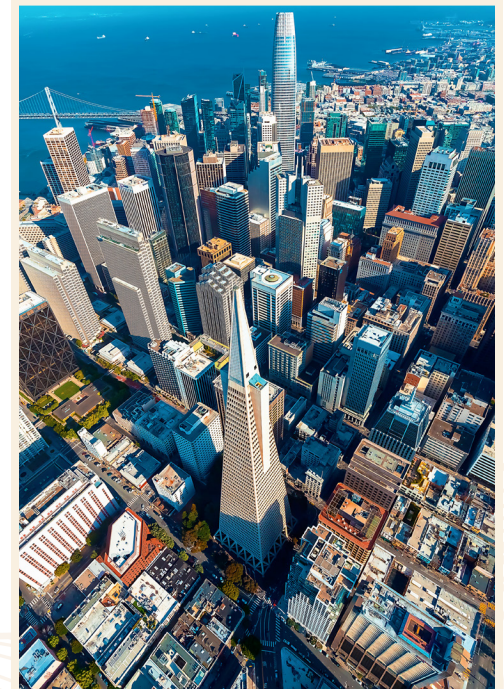
Elevated Dining Space

Discover an exceptional ground floor restaurant space at 252 California Street, the former home of the celebrated Aqua Restaurant, which helped define San Francisco's culinary renaissance as one of the city's most acclaimed seafood destinations. This second-generation restaurant space offers a rare opportunity to join the legacy of San Francisco's renowned dining scene, positioned at the prestigious intersection of California and Battery Streets in the heart of the Financial District. The location provides access to thousands of discerning professionals who have made this neighborhood a destination for elevated business dining and after-work gatherings. With BART and Muni stations nearby, your restaurant will benefit from the exceptional transit accessibility that has long supported San Francisco's vibrant restaurant culture, ensuring a steady stream of customers who appreciate the city's commitment to culinary excellence.





San Francisco's Financial District is experiencing a strong resurgence as workers return to the office and major employers reinvest in their downtown presence, bringing renewed energy and robust demand for quality dining destinations. California Street, where this property sits, serves as both a commercial corridor and a connection to the city's vitality—the historic cable car line running along the street links the Financial District to Union Square, Chinatown, and Nob Hill, drawing both weekday professionals and weekend visitors. The property is also in close proximity to some of San Francisco's top-grossing restaurants, including Tadich Grill, Wayfare Tavern, Pabu, Holbrook House, and Schroeder's.



The Financial District

Halleck Street

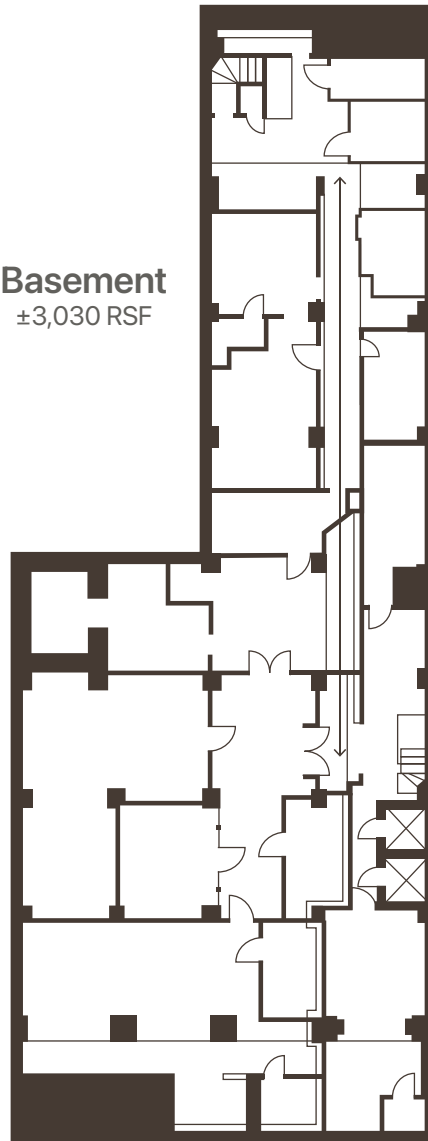
The Opportunity



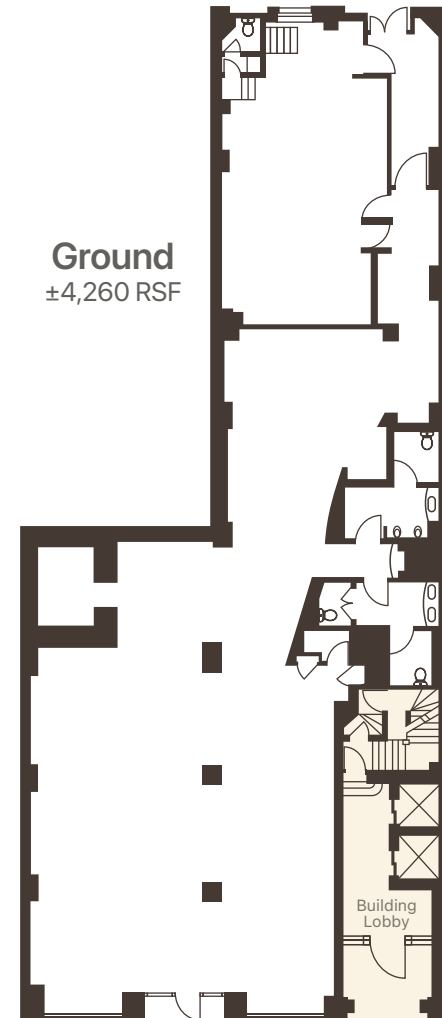
Highlights

- Upscale interior finishes throughout the space
- Frontage faces iconic San Francisco cable-car

Basement
±3,030 RSF



Ground
±4,260 RSF



Total
±7,290 RSF

California Street



252
CALIFORNIA STREET



Contacts

Laura Tinetti
Managing Director
laura.tinetti@jll.com
+1 415 228 3072
License# CA-01358500

Victoria Viet
Associate
victoria.viet@jll.com
+1 936 676 4950
License# CA-02442228



Jones Lang LaSalle Brokerage, Inc. Real Estate License #01856260

Although information has been obtained from sources deemed reliable, neither Owner nor JLL makes any guarantees, warranties or representations, express or implied, as to the completeness or accuracy as to the information contained herein. Any projections, opinions, assumptions or estimates used are for example only. There may be differences between projected and actual results, and those differences may be material. The Property may be withdrawn without notice. Neither Owner nor JLL accepts any liability for any loss or damage suffered by any party resulting from reliance on this information. If the recipient of this information has signed a confidentiality agreement regarding this matter, this information is subject to the terms of that agreement. ©2026. Jones Lang LaSalle IP, Inc. All rights reserved.