



 **JLL** SEE A BRIGHTER WAY

16180 SE Laurel Street  
Waukee, Iowa 50263

# For lease

Flex space available in  
prime Waukee location

# 12,108 SF

## Property overview

Availability: 12,108 SF  
Lease rate: \$12.00 NNN  
Lot size: 1.27 acres  
Zoning: Commercial  
Year built: 1999

- Drive-in doors: 5
  - Four 12'W x 12'T
  - One 12'W x 14'T
- Dock doors: 1
- Clear height: 14' - 16'
- Power: 3-phase, 120/240V
- Existing office and showroom (~4,500 SF)
- Existing floor drain
- Fenced and paved outdoor storage
- Excellent location in Waukee with easy access to Hickman Rd and University Ave

Contact brokers for  
additional information

[jll.com/des-moines](http://jll.com/des-moines)

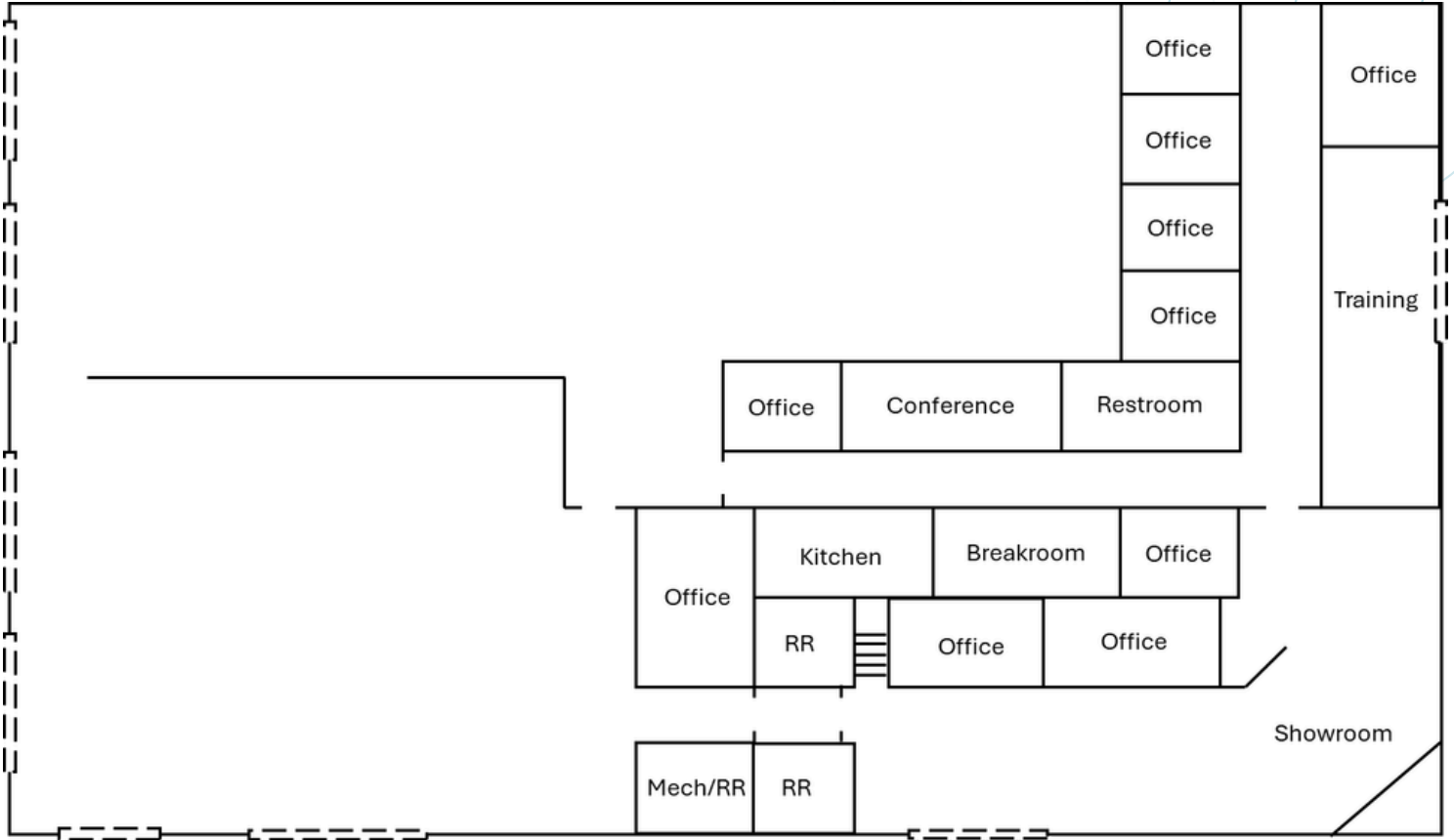
**Tanner Hedstrom**  
Vice President  
[tanner.hedstrom@jll.com](mailto:tanner.hedstrom@jll.com)  
+1 515 745 2734

**Thomas Edwards**  
Associate  
[thomas.edwards@jll.com](mailto:thomas.edwards@jll.com)  
+1 515 802 4684

**Austin Hedstrom, SIOR**  
Executive Vice President  
[austin.hedstrom@jll.com](mailto:austin.hedstrom@jll.com)  
+1 515 414 1767

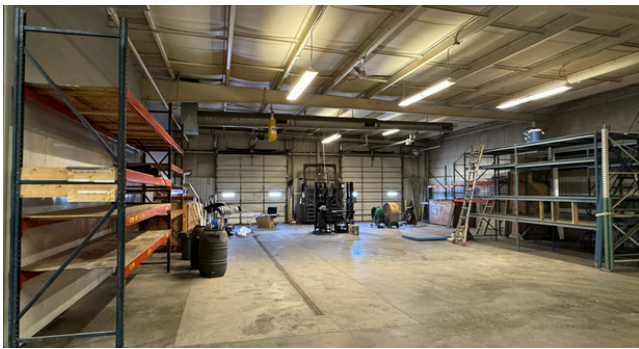


# Floorplan





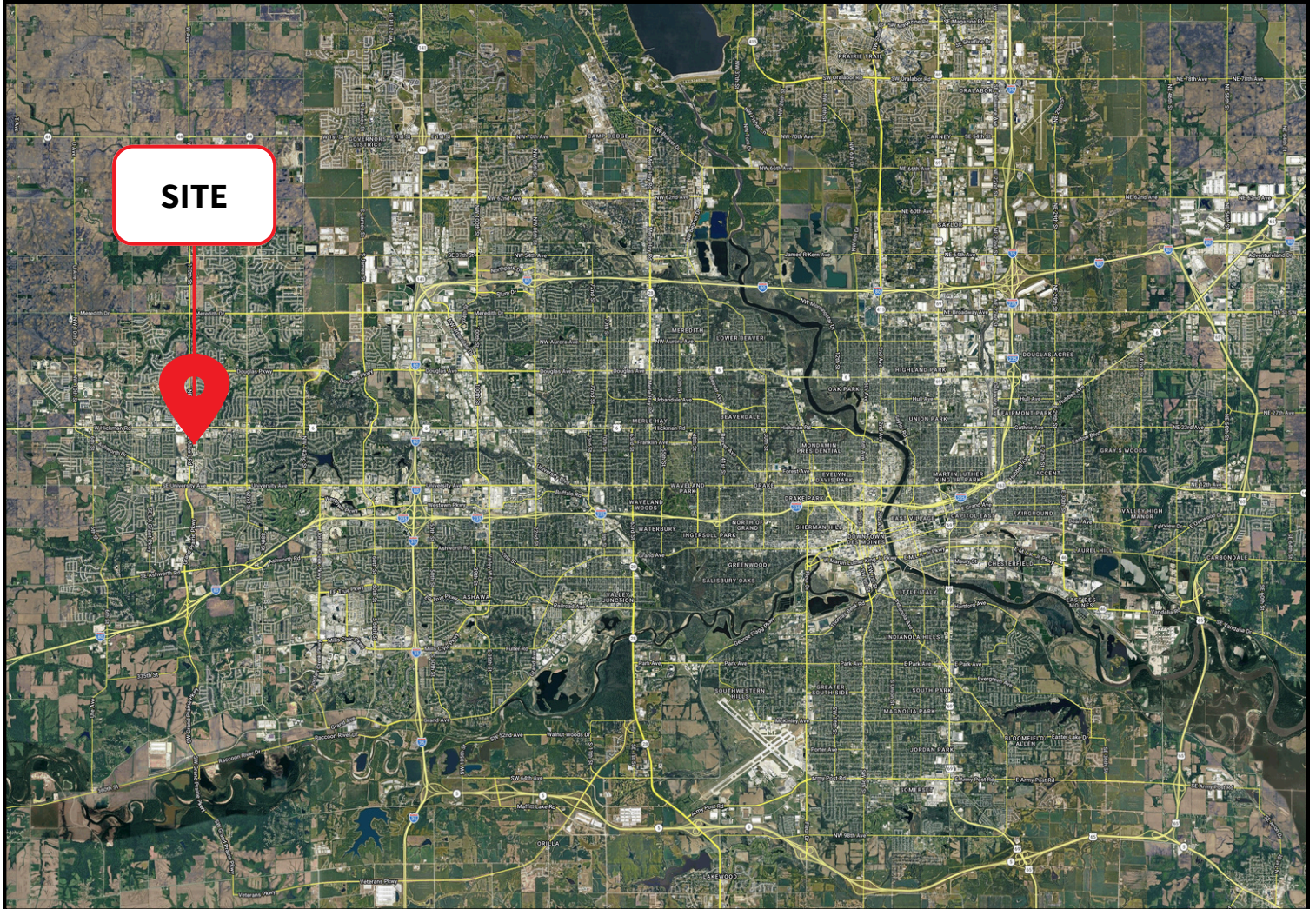
# Images





# For lease

16180 SE Laurel Street | Waukee, Iowa 50263



Contact brokers for  
additional information  
[jll.com/des-moines](http://jll.com/des-moines)

**Tanner Hedstrom**  
Vice President  
[tanner.hedstrom@jll.com](mailto:tanner.hedstrom@jll.com)  
+1 515 745 2734

**Thomas Edwards**  
Associate  
[thomas.edwards@jll.com](mailto:thomas.edwards@jll.com)  
+1 515 802 4684

**Austin Hedstrom, SIOR**  
Executive Vice President  
[austin.hedstrom@jll.com](mailto:austin.hedstrom@jll.com)  
+1 515 414 1767