



2 0 0
CIVIC CENTER
D R I V E

BakerHostetler

Park NATIONAL BANK

200
200

**CLASS A OFFICE
SPACE FOR LEASE**



Property overview

Available Suites

Ground Fl (Garage)

7,387 SF

6th Fl

18,081 SF

8th Fl

6,461 SF

9th Fl

17,861 SF

13th Fl

3,252 SF

14th Fl

15,559 SF

255,400 SF

building

Features:

- Furniture available
- Building signage available
- Updated lobby with art gallery

Amenities & Services:



Attached parking garage



Fitness center with showers and towel service



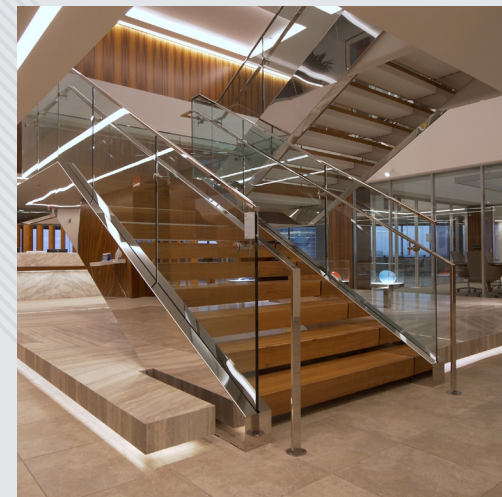
Lobby café with indoor and outdoor seating

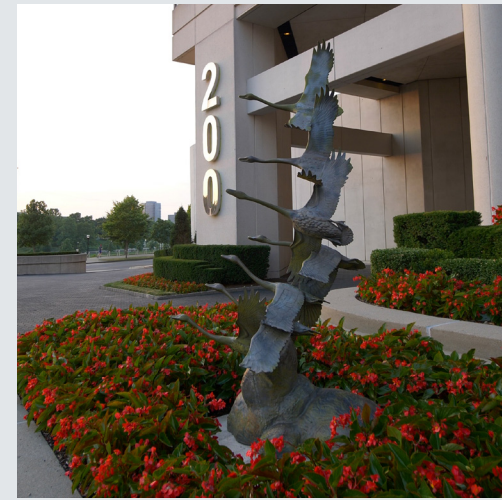


Shared conference room



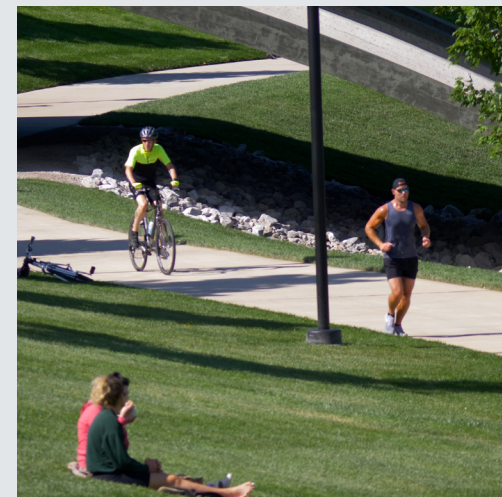
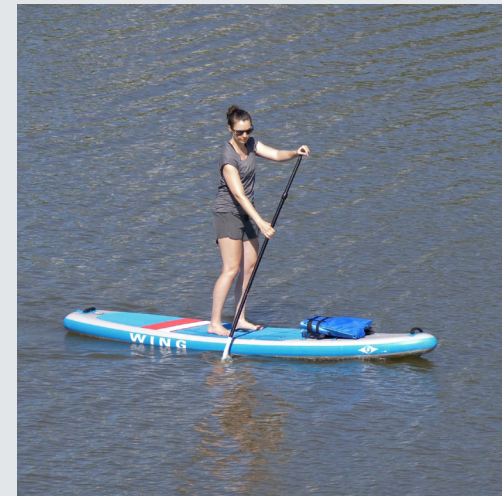
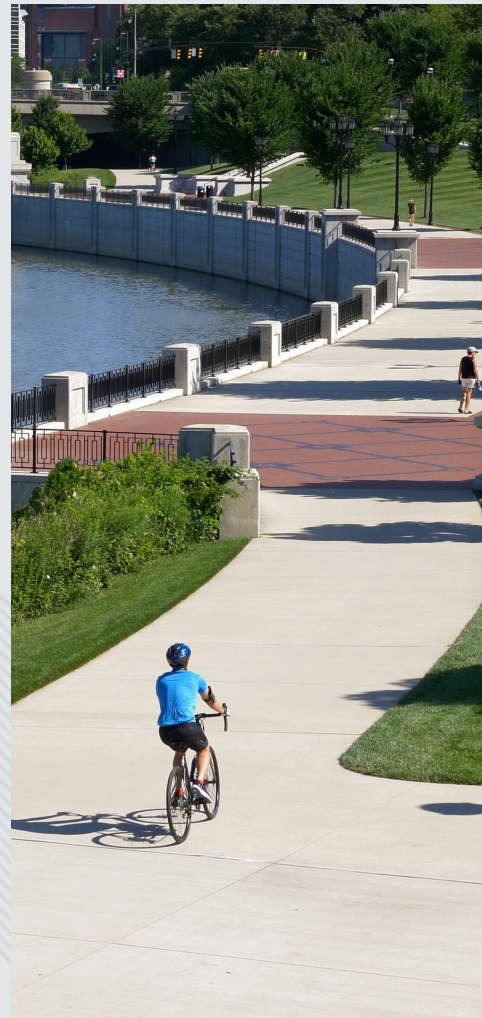
On-site property management and security





In the heart of downtown

200 Civic Center Drive is ideally located on the Scioto Riverfront in the heart of downtown Columbus. Tenants enjoy incredible views, walking paths, and convenient access to downtown and Franklinton amenities.



The Capital Line

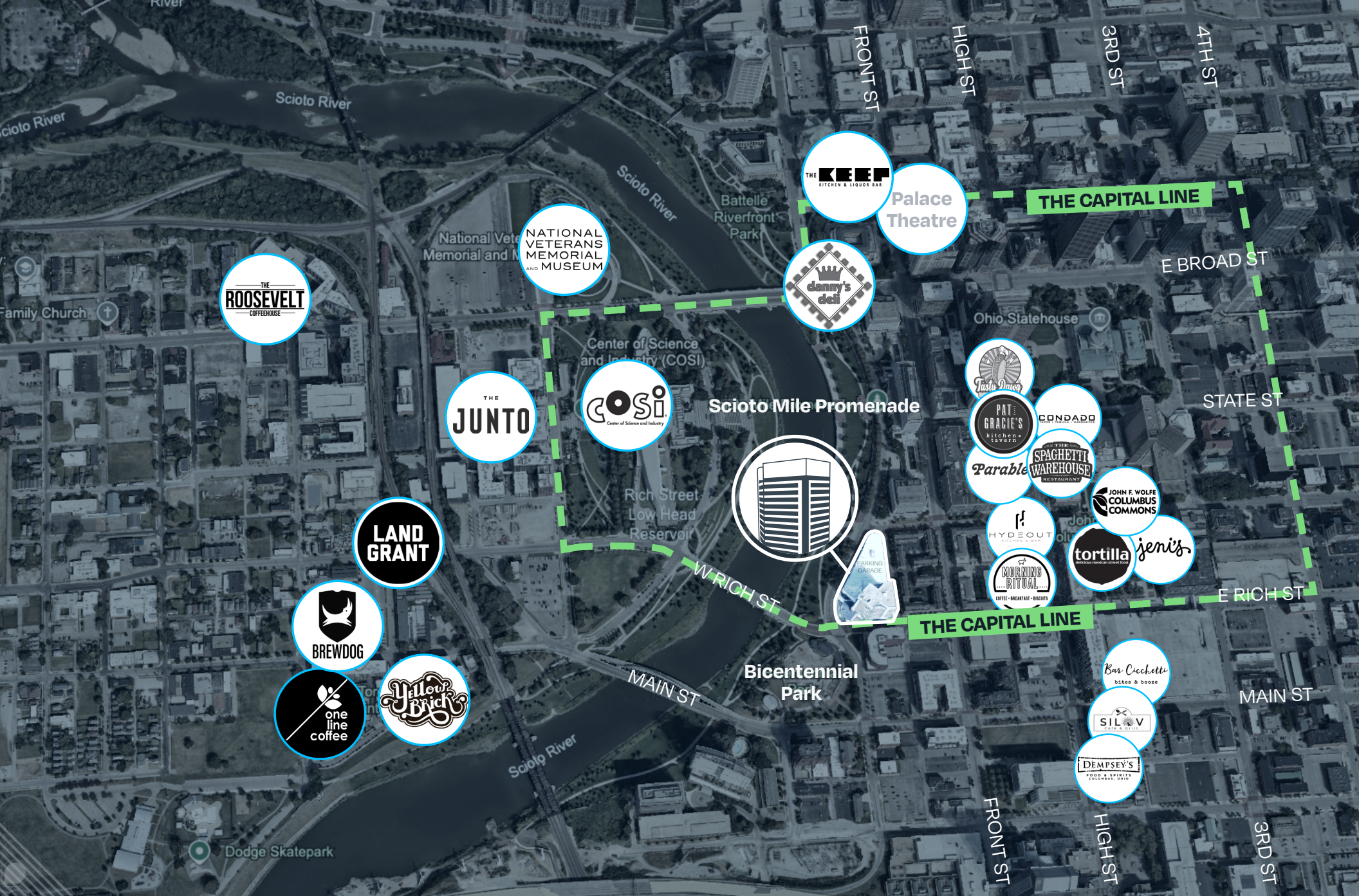
200 Civic Center is within walking distance to The Capital Line, an urban pathway woven through the heart of Downtown Columbus. This two-mile journey, exclusive to bike and pedestrian traffic, offers an intentional route to some of the city's most vibrant attractions, connecting amenities, greenspaces, job centers, and residential neighborhoods within Downtown Columbus.

This innovative urban pathway will not only bridge the geographical gaps between diverse neighborhoods but will also act as a catalyst for cultural enrichment, social cohesion, and economic revitalization within the heart of the city that will benefit everyone in the Columbus Community.

[CLICK TO LEARN MORE](#)

Source: downtowncolumbus.com

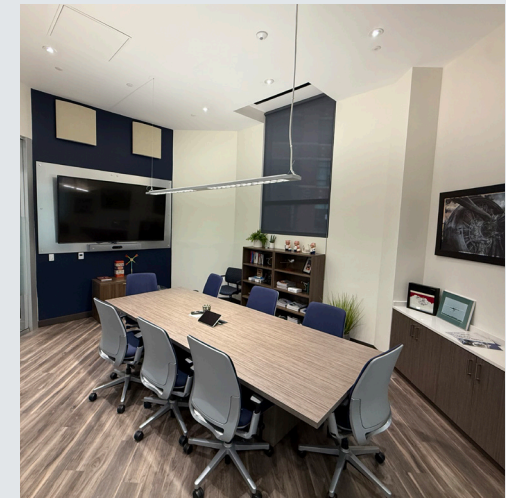




Downtown location

Premium furnished suites

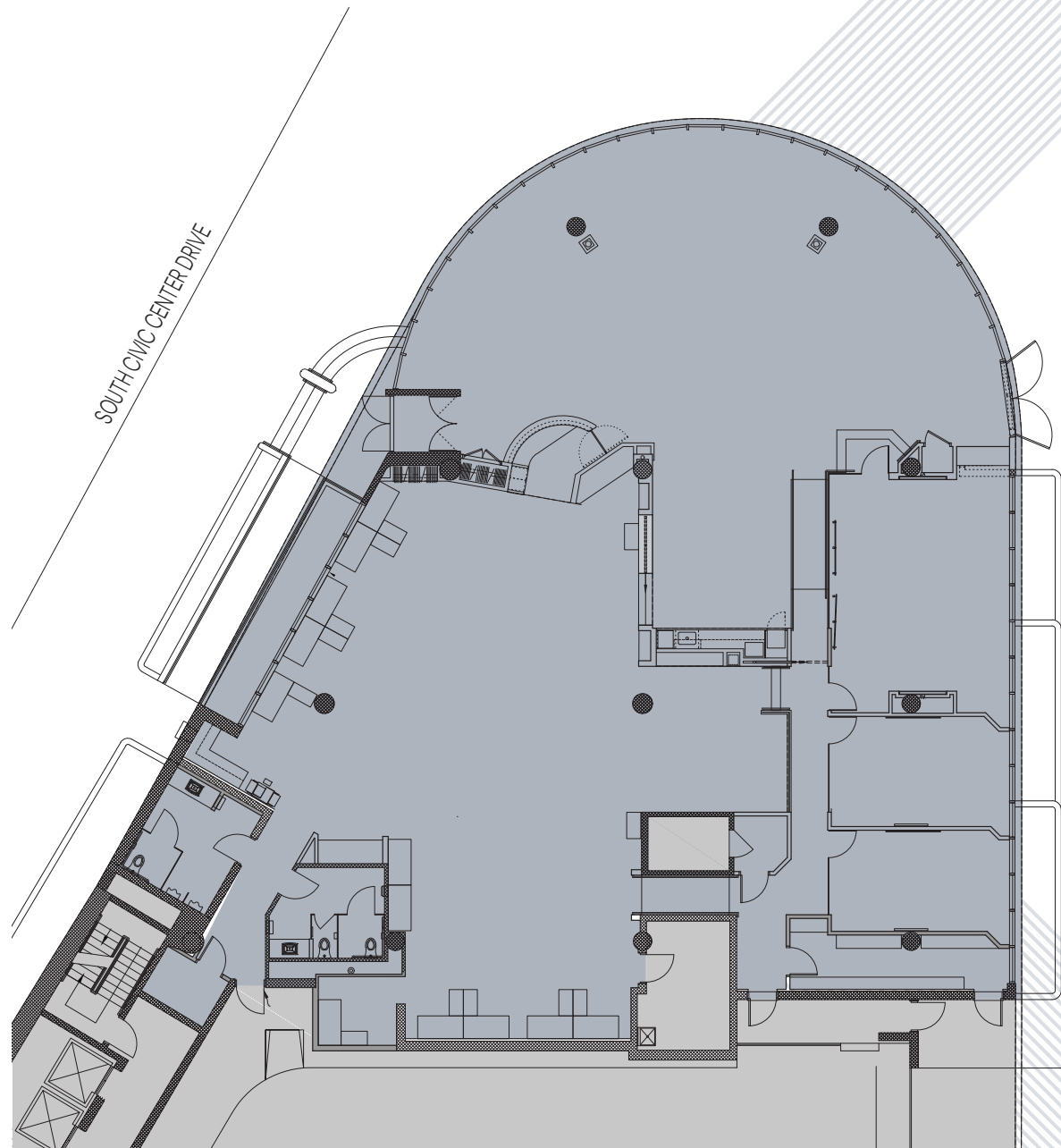
Experience turnkey luxury in two meticulously furnished executive suites. Each suite features Class A furniture, state-of-the-art technology infrastructure, and immediate move-in capability, delivering the perfect blend of functionality and sophistication. These thoughtfully designed spaces offer an elevated professional environment without the setup investment or delay.



Floorplan

Ground Floor Garage

- Modern space with large open areas
- Secure ground floor with direct entry
- In-suite restrooms
- Large conference and board rooms



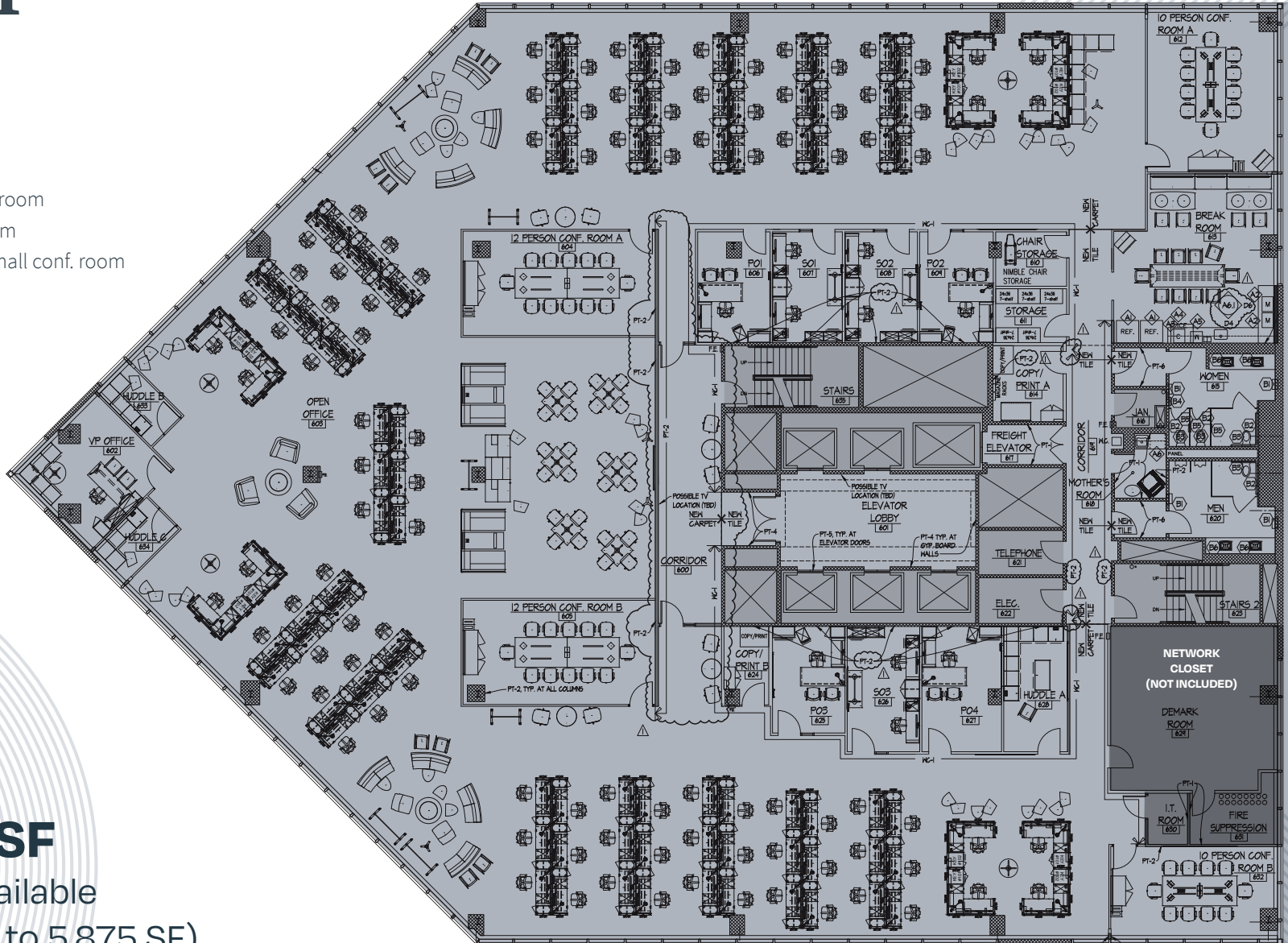
7,387 SF

\$21-\$25 PSF, Modified gross

Floorplan

6th Floor

- 12 workstations
- 90 benching stations
- 3 shared offices
- 4 private offices
- 2 twelve person conf. room
- 2 ten person conf. room
- 1 exec visitor office/small conf. room
- 1 “think tank” room
- 2 phone booths
- 2 copy/print areas
- Breakroom



18,081 SF

full floor available

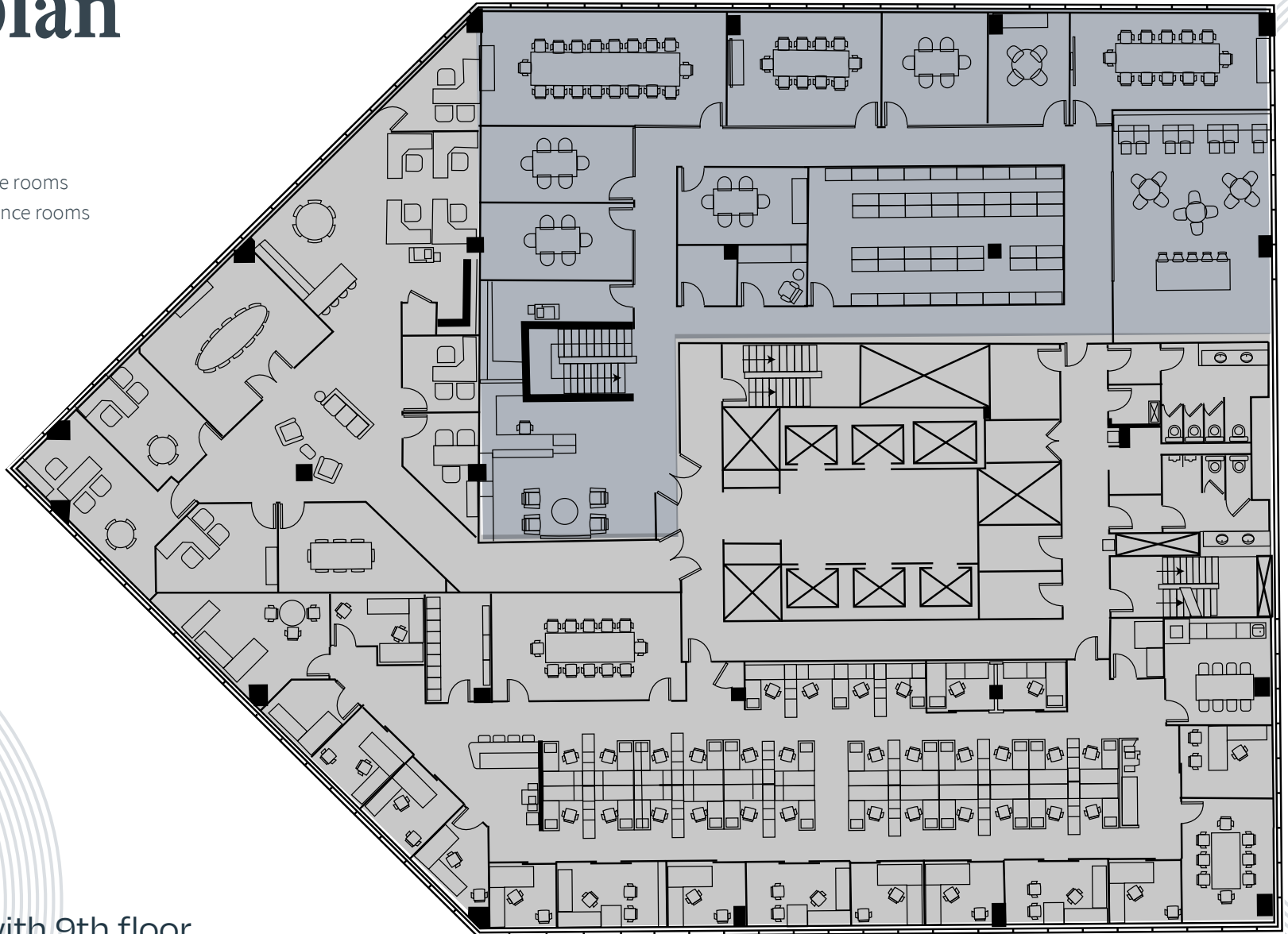
(demisable to 5,875 SF)

\$21-\$25 PSF, Modified gross

Floorplan

8th Floor

- Reception
- Mail/copy room
- Six 4-10 person conference rooms
- Two 12-20 person conference rooms
- Café
- Large file room
- Huddle room
- Mother's room
- Interconnected stairwell within suite connecting to 9th floor (suite 900)



6,461 SF

Suite 800

Contiguous with 9th floor

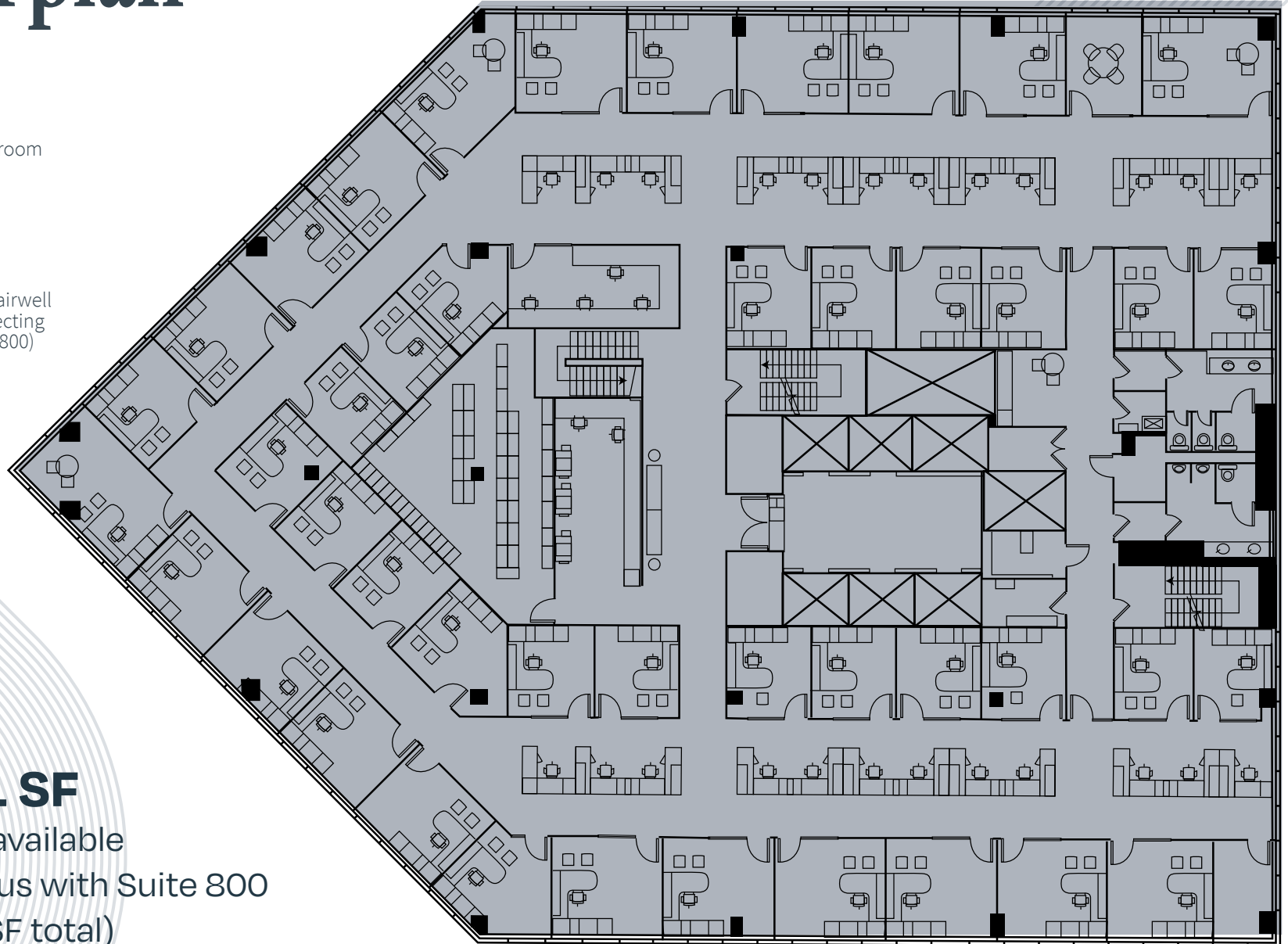
(24,322 SF total)

\$21-\$25 PSF, Modified gross

Floorplan

9th Floor

- 44 Offices
- 2 huddle rooms
- Large conference room
- 24 workstations
- Large file area
- Coffee room
- Copy area
- Interconnected stairwell within suite connecting to 8th floor (Suite 800)



17,861 SF

full floor available

Contiguous with Suite 800

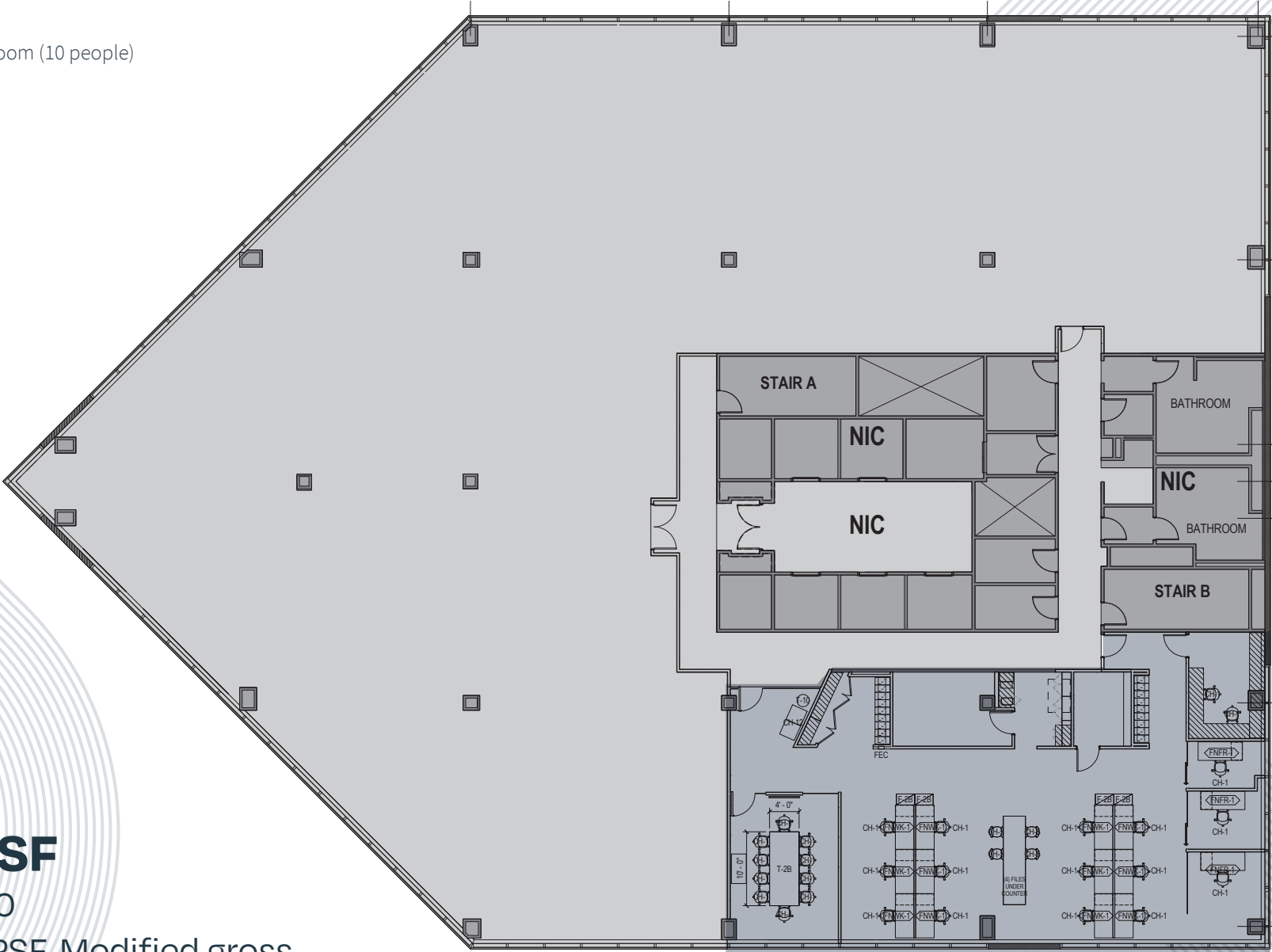
(24,322 SF total)

\$21-\$25 PSF, Modified gross

Floorplan

13th Floor

- Large conference room (10 people)
- 12 workstations
- 4 offices
- Two storage rooms
- Storage lockers



3,252 SF

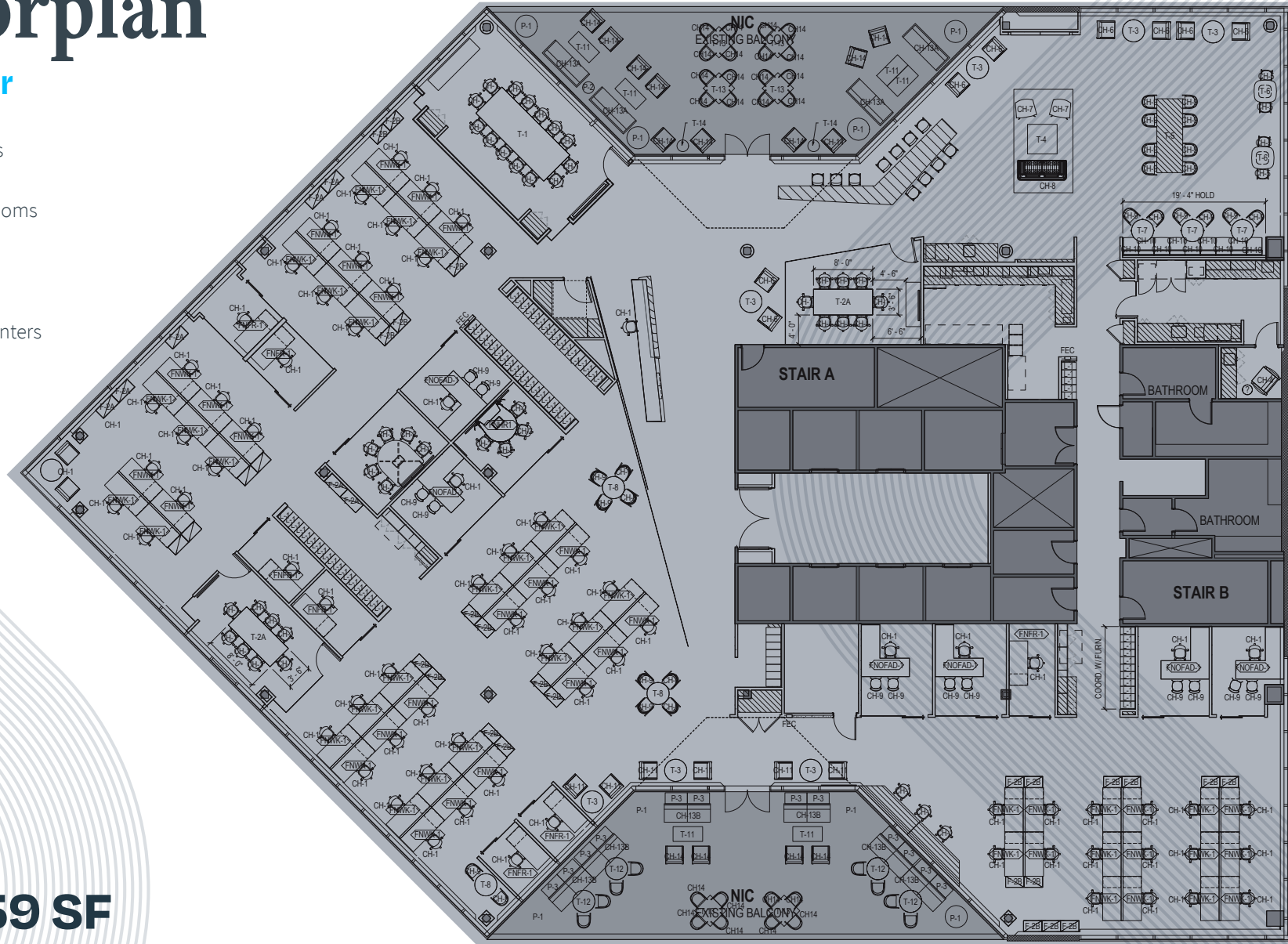
Suite 1300

\$21-\$25 PSF, Modified gross

Floorplan

14th Floor

- Reception
- 62 workstations
- 11 offices
- 5 conference rooms
- Café
- Kitchenette
- Mother's room
- Open work counters
- Storage lockers
- Copy area



15,559 SF

Suite 1400

\$21-\$25 PSF, Modified gross



On-site comforts

The modern 2nd floor fitness center features state-of-the-art equipment, locker rooms, showers, and towel service. Below the fitness center in the art-laden lobby, tenants enjoy a café offering breakfast and lunch Monday through Friday. With an attached garage for tenants, 200 Civic Center provides the most convenient experience possible.





2 0 0
CIVIC CENTER
D R I V E

FOR LEASING

Andy Dutcher, SIOR

D + 1 614 460 4403

M + 1 614 425 2959

andrew.dutcher@jll.com

Joey Lamb

D + 1 614 460 4412

M + 1 614 506 9147

joey.lamb@jll.com



Although information has been obtained from sources deemed reliable, neither Owner nor JLL makes any guarantees, warranties or representations, express or implied, as to the completeness or accuracy as to the information contained herein. Any projections, opinions, assumptions or estimates used are for example only. There may be differences between projected and actual results, and those differences may be material. The Property may be withdrawn without notice. Neither Owner nor JLL accepts any liability for any loss or damage suffered by any party resulting from reliance on this information. If the recipient of this information has signed a confidentiality agreement regarding this matter, this information is subject to the terms of that agreement. ©2026. Jones Lang LaSalle IP, Inc. All rights reserved.