



For Lease or Sale

[jll.com](https://www.jll.com)

Centrally Located Industrial Building with 3MW Power

650 Mansfield Avenue | Pittsburgh, PA 15205

Rick O'Brien, SIOR
412.208.1403
rick.obrien@jll.com

Greg Hopkins
412.770.5295
greg.hopkins@jll.com

Alec Staiger
412.977.4184
alec.staiger@jll.com

 **JLL** SEE A BRIGHTER WAY

PROPERTY DETAILS

Building Type	General Industrial
Building SF	± 71,429 SF
Office	± 8,000 SF
Warehouse	± 63,429 SF
Year Built	1958, 1995 (Renov), 2025 (Renov)
Ceiling Height	16' - 18' (± 38,000 SF) / 21' (+ 10,325 SF)
Parcel Size	± 13.71 AC
Electric	Up to 3MW 480 Volt, Three Phase, Four Wire service available.
Generator	344-kVA/275-kW, diesel-powered SDMO emergency generator.
Sprinklers	None
Load Docks	12 Positions
Parking	54 Spaces
Trailer Parking	Available

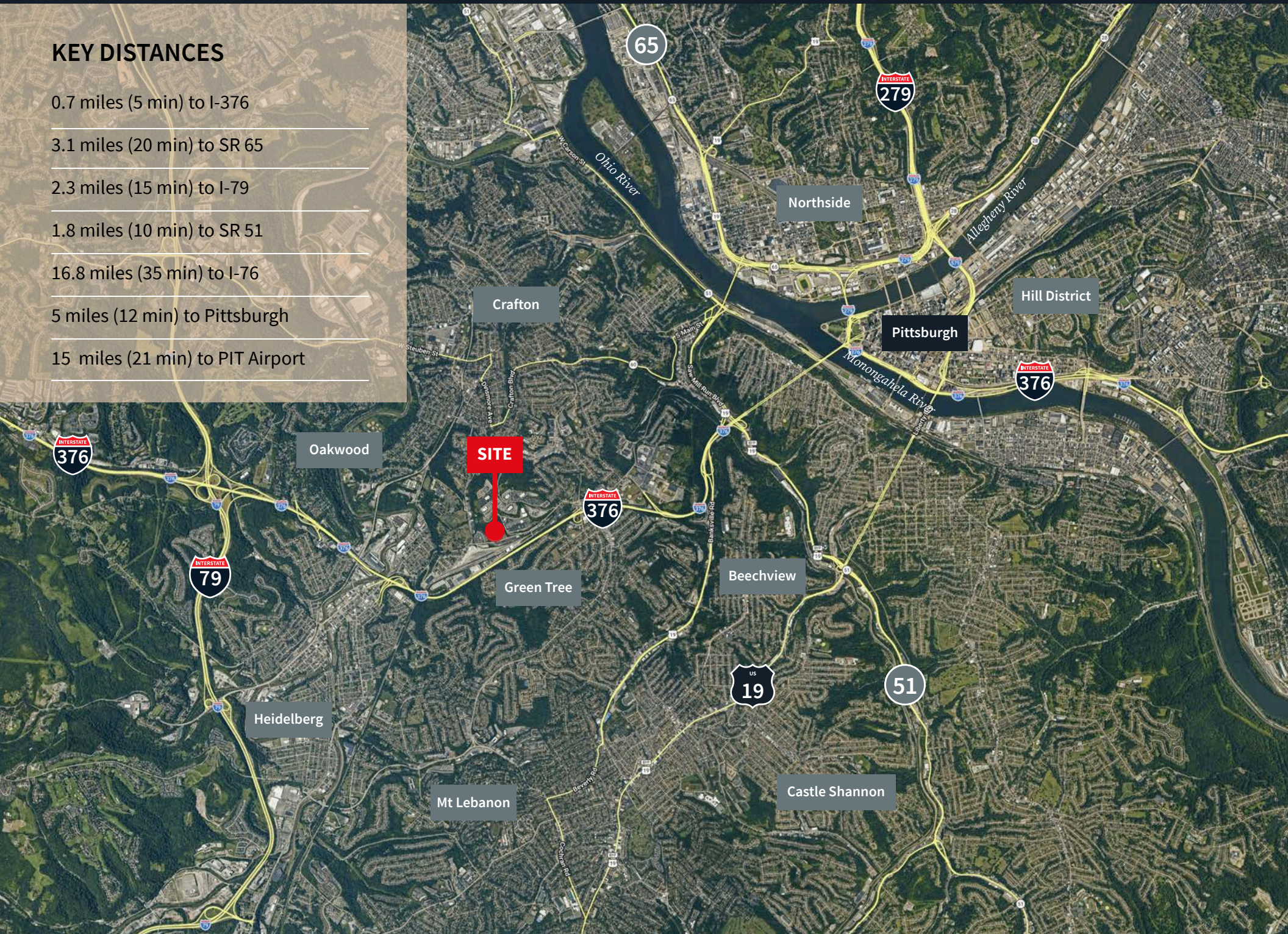
HIGHLIGHTS

- Central location, excellent access to highways
- Adaptable as general industrial
- Prior use as cold chain and warehouse

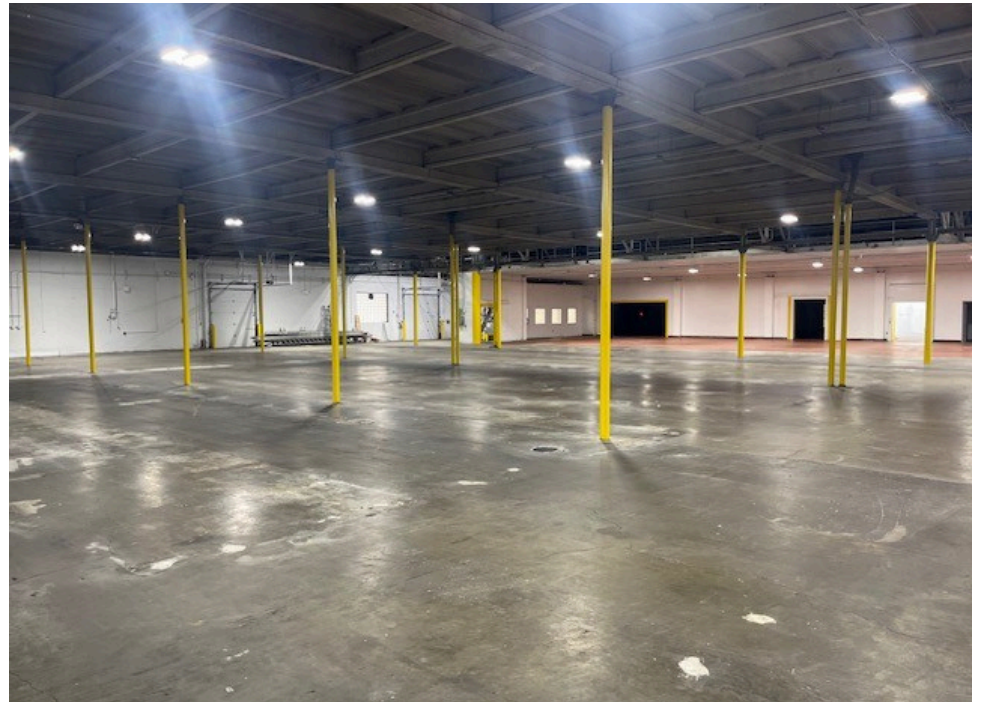


KEY DISTANCES

- 0.7 miles (5 min) to I-376
- 3.1 miles (20 min) to SR 65
- 2.3 miles (15 min) to I-79
- 1.8 miles (10 min) to SR 51
- 16.8 miles (35 min) to I-76
- 5 miles (12 min) to Pittsburgh
- 15 miles (21 min) to PIT Airport









DISCLAIMER: Although information has been obtained from sources deemed reliable, Owner, Jones Lang LaSalle, and/or their representatives, brokers or agents make no guarantees as to the accuracy of the information contained herein, and offer the Property without express or implied warranties of any kind. The Property may be withdrawn without notice. If the recipient of this information has signed a confidentiality agreement regarding this matter, this information is subject to the terms of that agreement. ©2026. Jones Lang LaSalle. All rights reserved.

[jll.com](https://www.jll.com)

Contacts

Rick O'Brien, SIOR

412.208.1403

rick.obrien@jll.com

Greg Hopkins

412.770.5295

greg.hopkins@jll.com

Alec Staiger

412.977.4184

alec.staiger@jll.com

 **JLL** SEE A BRIGHTER WAY