



# For sale

Rare offering with excellent parking in Manhasset

351-355 Plandome Road & 12 Bayview Avenue, Manhasset, NY

## Building Features



**Total: +/- 10,700 SF**

*2nd Floor office: +/- 1,500 SF*

*1st Floor retail: +/- 4,600 SF*

*Lower Level: +/- 4,600 SF*



**Asking price: \$5,200,000**



**Taxes: Total: \$42,709.09**

*351-355 Plandome Road: \$29,305.75*

*12 Bayview Avenue: \$13,403.34*



**Parking: 30 spaces**

*18 spaces at 12 Bayview Avenue*

*+ 12 spaces at 351-355 Plandome Road*



**Total Lot Size: 0.486 Acres (3 lots)**

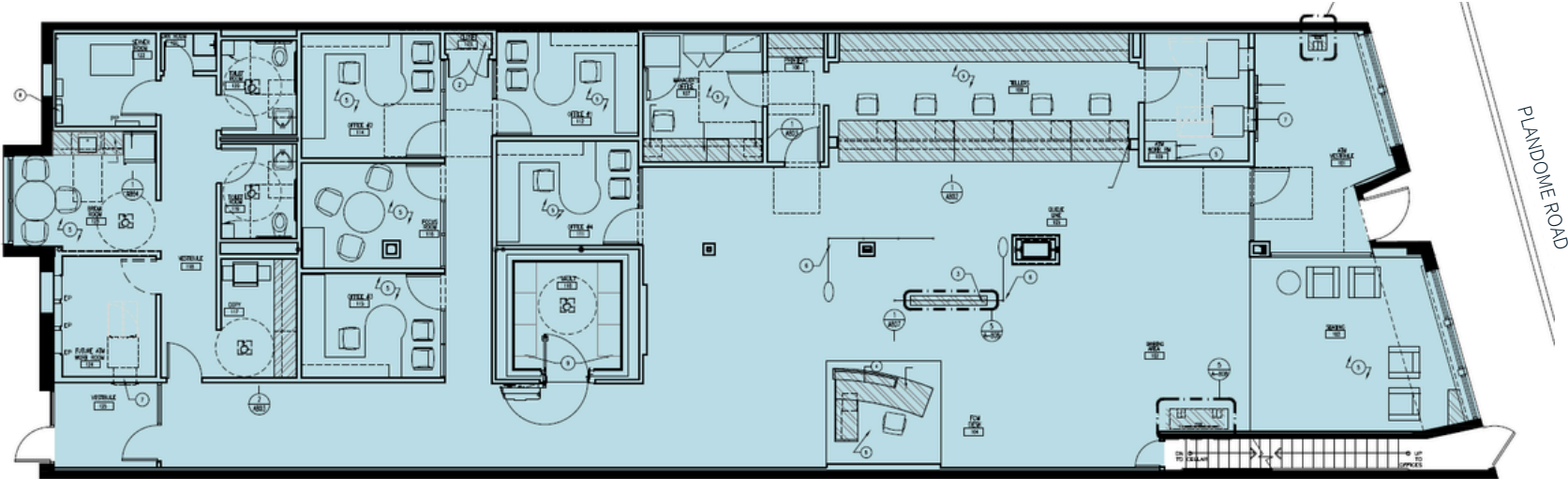


**Zoning: Business A District**

- ◆ Rare User/Investor opportunity
- ◆ Steps away from the Manhasset LIRR Station
- ◆ Excellent parking ratio for downtown Manhasset
- ◆ Ground floor previously occupied by a bank



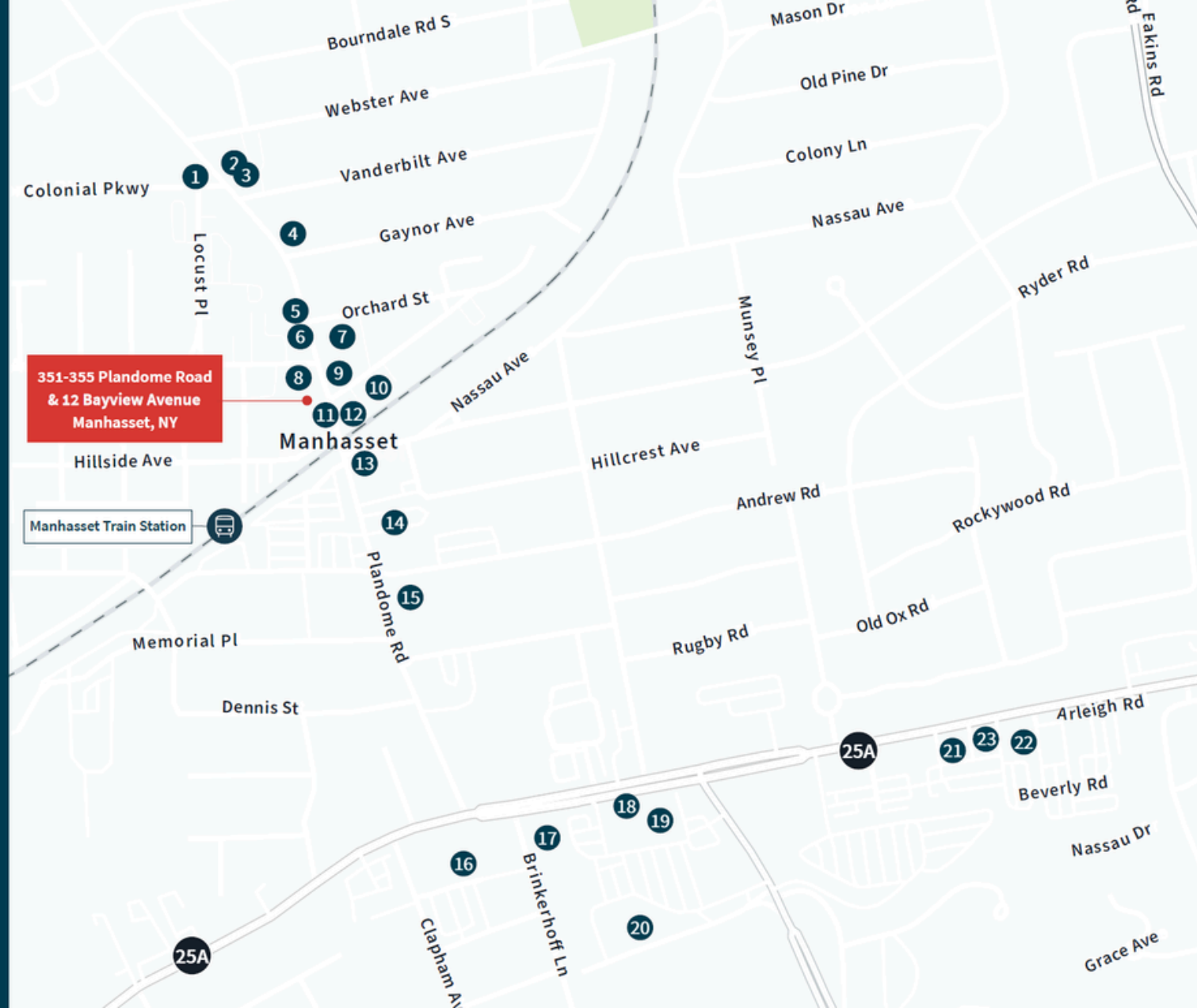
1st floor plan



Interior photos



1. The UPS Store
2. Bang Bang Burritos
3. Angies
4. Carvel
5. Umberto's of Manhasset
6. Kissaki Japanese Restaurant
7. Walgreens
8. Starbucks Coffee Company
9. Dunkin'
10. United States Postal Service
11. Louie's
12. Chase Bank
13. For Five Coffee Manhasset
14. Bank of America
15. North Hempstead Town Hall
16. St. Mary's Roman Catholic Church
17. Michaels
18. Marshalls
19. Nordstrom Rack
20. King Kullen
21. Stresa Restaurant
22. Barnes & Noble
23. Cafe Continental



**Kyle Crennan**

Managing Director

kyle.crennan@jll.com

+ 1 631 962 2896

**Joseph Lopresti**

Managing Director

joseph.lopresti@jll.com

+ 1 631 962 7384