



BOURBON LOGISTICS CENTER 7

3012 Preston Highway, Shepherdsville, Kentucky



LEASING AGENT

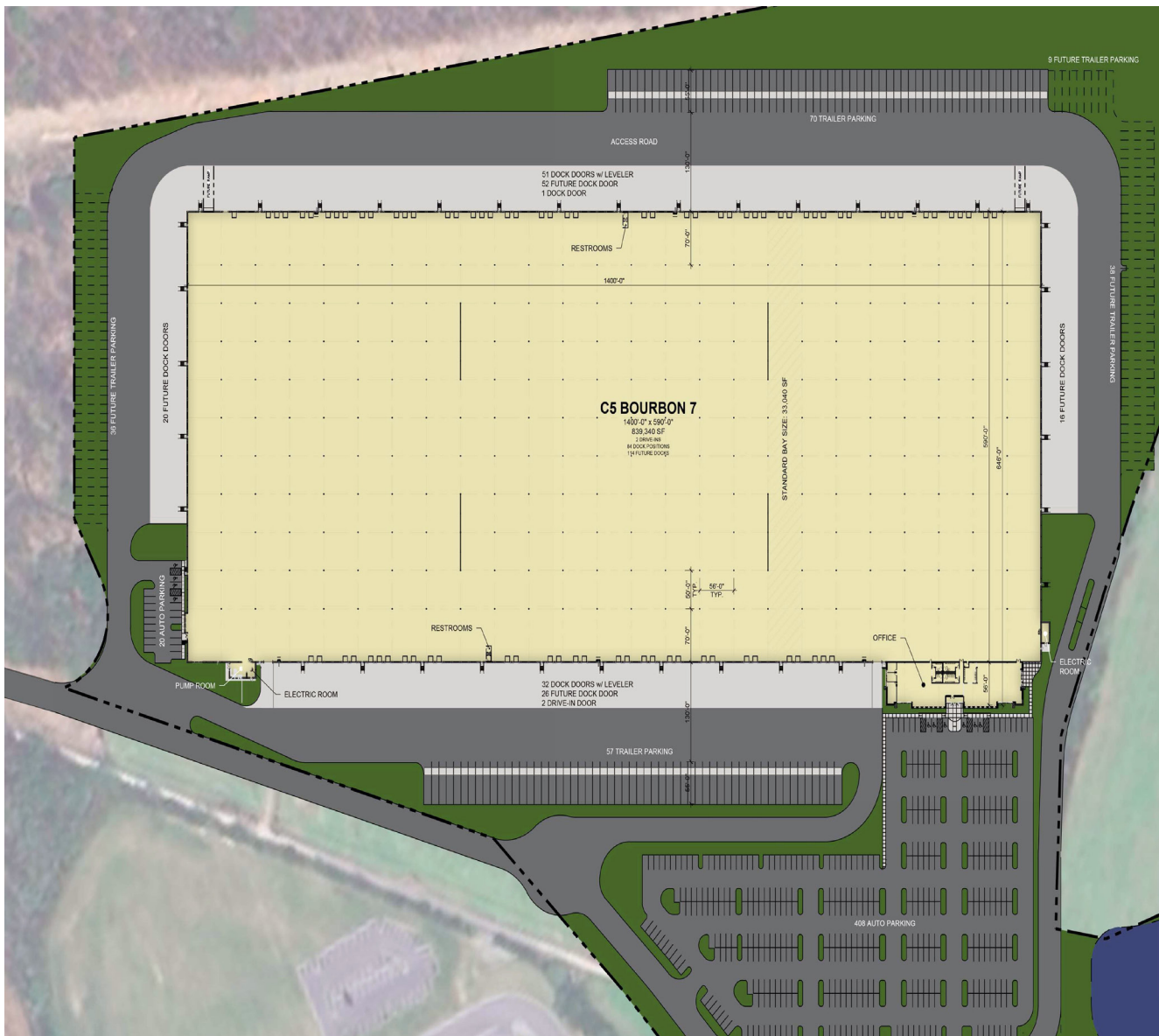


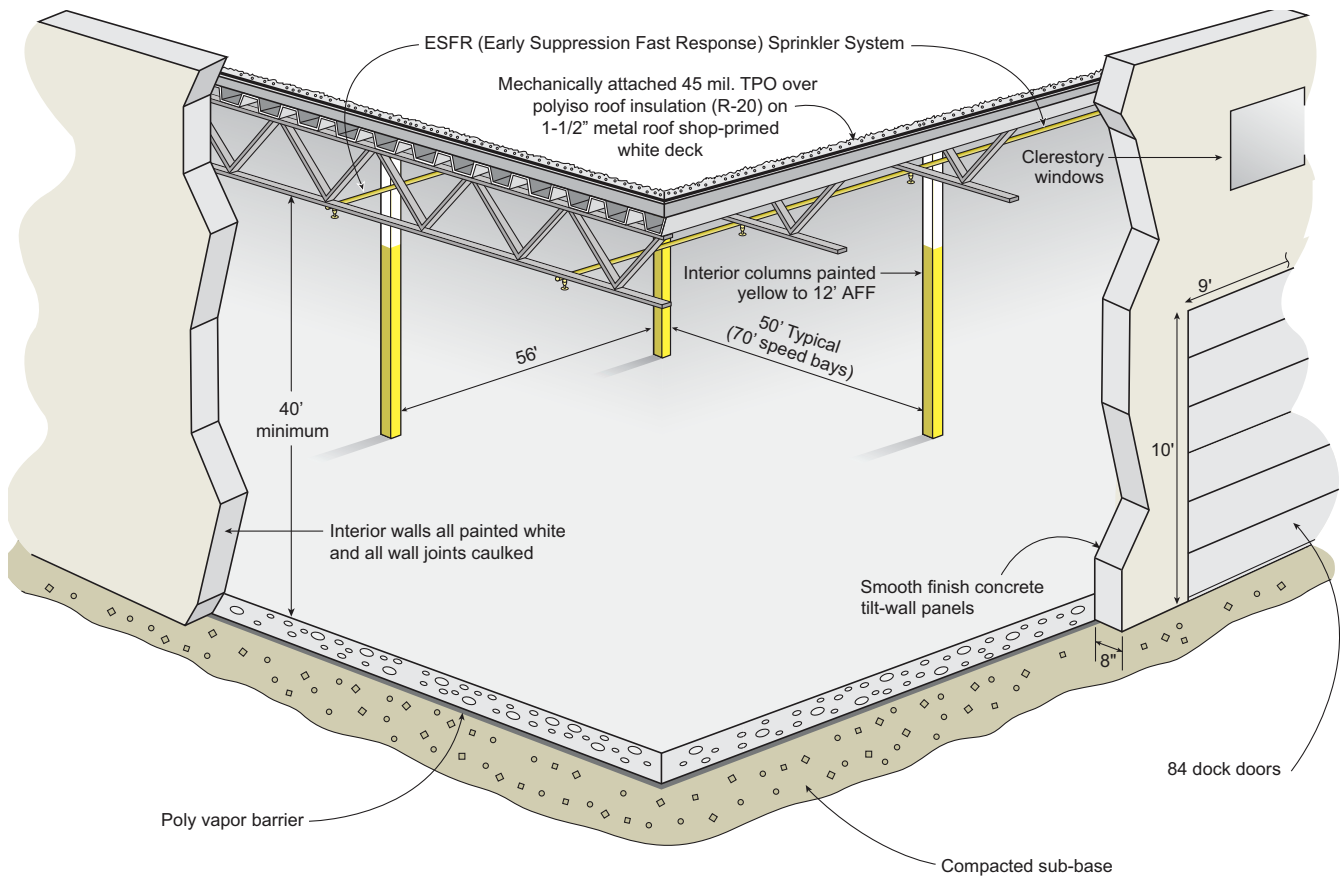
DEVELOPER

BOURBON LOGISTICS CENTER 7

Shepherdsville, Kentucky

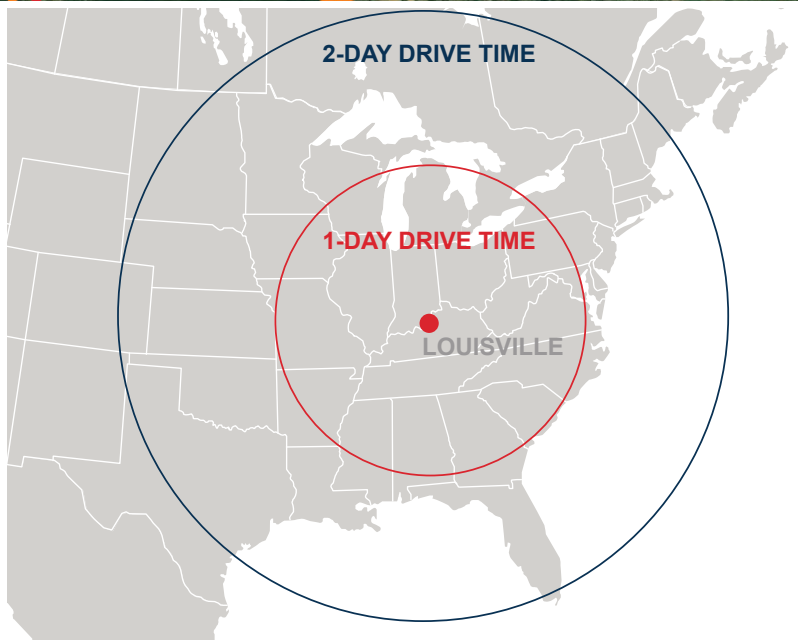
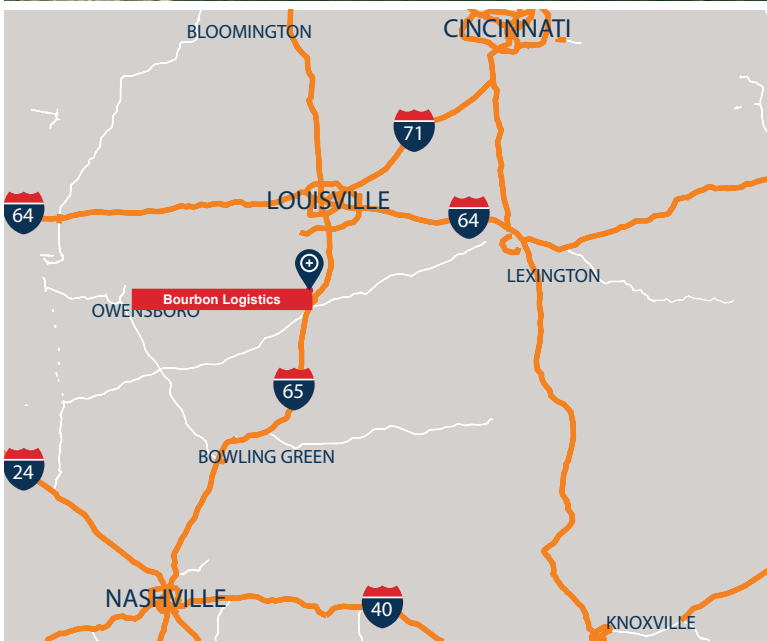
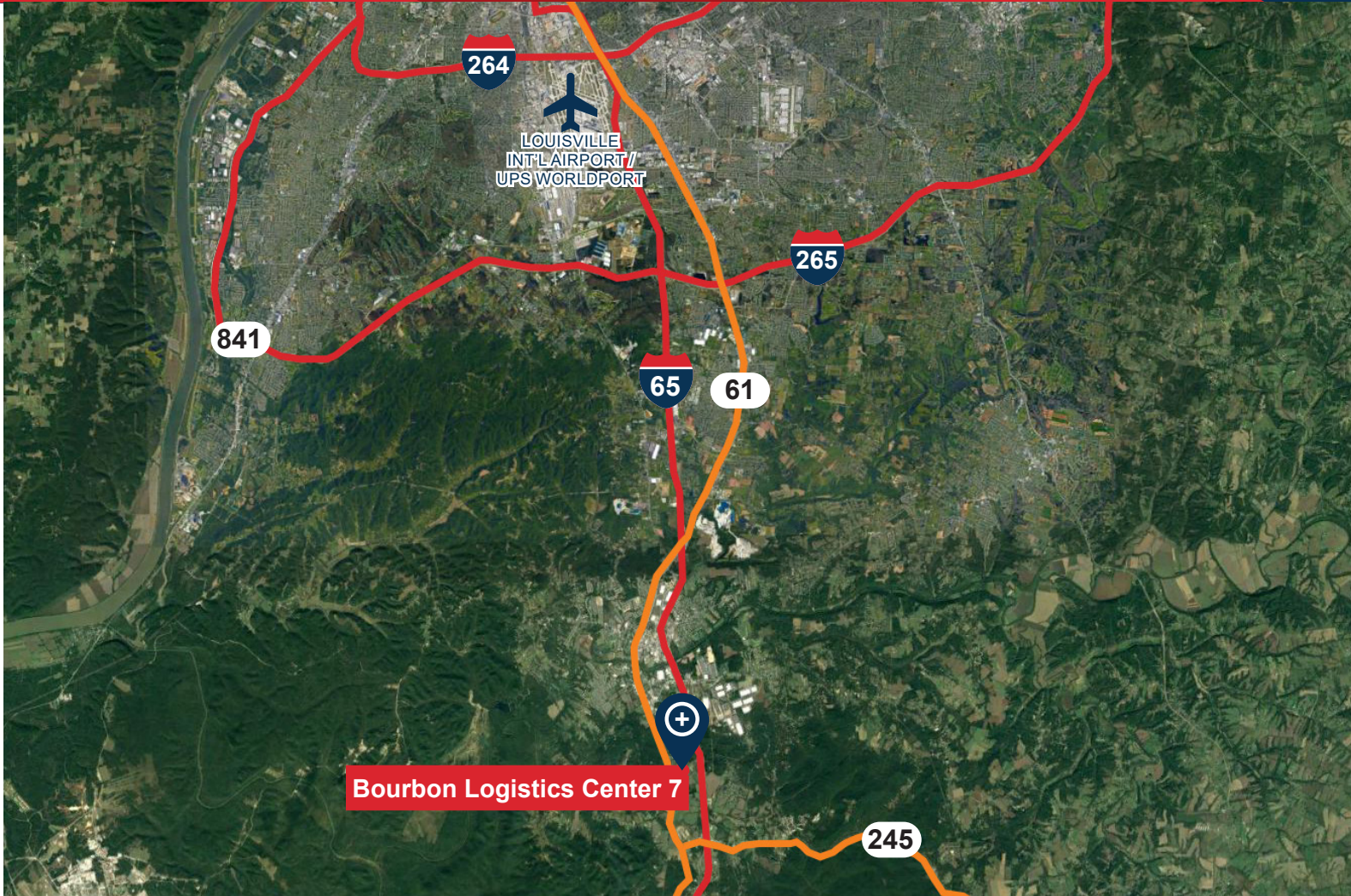
Bourbon Logistics Center 7 is positioned one-half mile from I-65 at Ohm Drive in Shepherdsville, Kentucky. The location provides superior access to multiple markets. UPS Worldport is 15 miles from the site, providing strategic logistics opportunities to the end-user.





BUILDING SPECIFICATIONS - BOURBON 7

Square Footage	839,340 SF
Office Area	12,000 SF
Site Area	60 acres
Column Spacing	50' wd x 56' dp (typical) with 70' speed bays
Clear Height	40'
Dock Doors	84 (expandable)
Drive-In Doors	2
Truck Court Depth	185'
Power	6000 Amp, 227/480 Volt, 3 Phase
Auto Parking	468 spaces (expandable)
Trailer Storage	210
Lighting	LED
Sprinkler	ESFR sprinkler system



Anthony Armbruster
 Investment Analyst
 O 859.287.3705
 aarmbruster@c5ip.com



Powell Spears, SIOR
 Senior Managing Director
 O 502.394.2509
 C 502.419.7391
 powell.spears@jll.com

Matt Hartlage, SIOR
 Senior Managing Director
 O 502.394.2517
 C 502.807.5339
 matt.hartlage@jll.com