

ALAMEDA MARINA

1827 Clement Avenue - 34,420 RSF
1801 Clement Avenue - 2,471 RSF
1829 Clement Avenue - 10,846 RSF
Alameda, CA

FOR LEASE




Sam Swan

Managing Director
+1 510 388 6400
sam.swan@jll.com
CA RE License #00992868

Kristi Childers

Managing Director
+1 510 812 2878
kristi.childers@jll.com
CA RE License #01997043

 **JLL** SEE A BRIGHTER WAY

Jones Lang LaSalle Brokerage, Inc.
Real Estate License# 01856260

Although information has been obtained from sources deemed reliable, neither Owner nor JLL makes any guarantees, warranties or representations, express or implied, as to the completeness or accuracy as to the information contained herein. Any projections, opinions, assumptions or estimates used are for example only. There may be differences between projected and actual results, and those differences may be material. The Property may be withdrawn without notice. Neither Owner nor JLL accepts any liability for any loss or damage suffered by any party resulting from reliance on this information. If the recipient of this information has signed a confidentiality agreement regarding this matter, this information is subject to the terms of that agreement. ©2026. Jones Lang LaSalle Brokerage, Inc. All rights reserved.

Project Highlights

- Walking distance to Park Street retail corridor
- Water Park boating and recreational access to Oakland Estuary
- Mixed use development with housing, retail, and office
- 530 Slip Marina

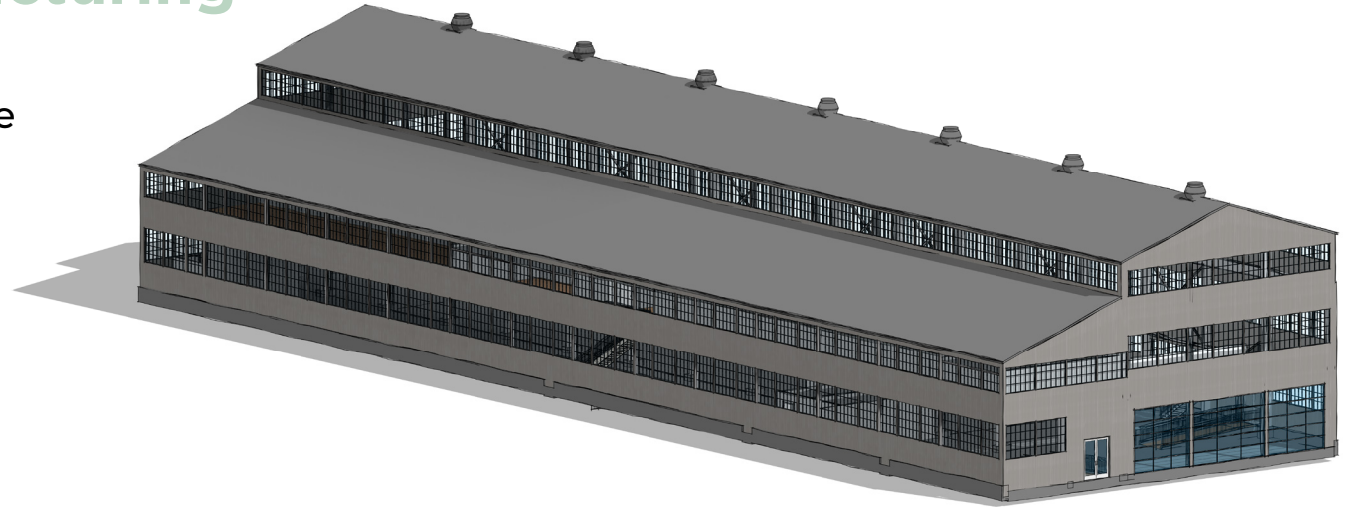


1827 Clement Avenue

(Building 19) - 34,420 RSF

Advanced Manufacturing

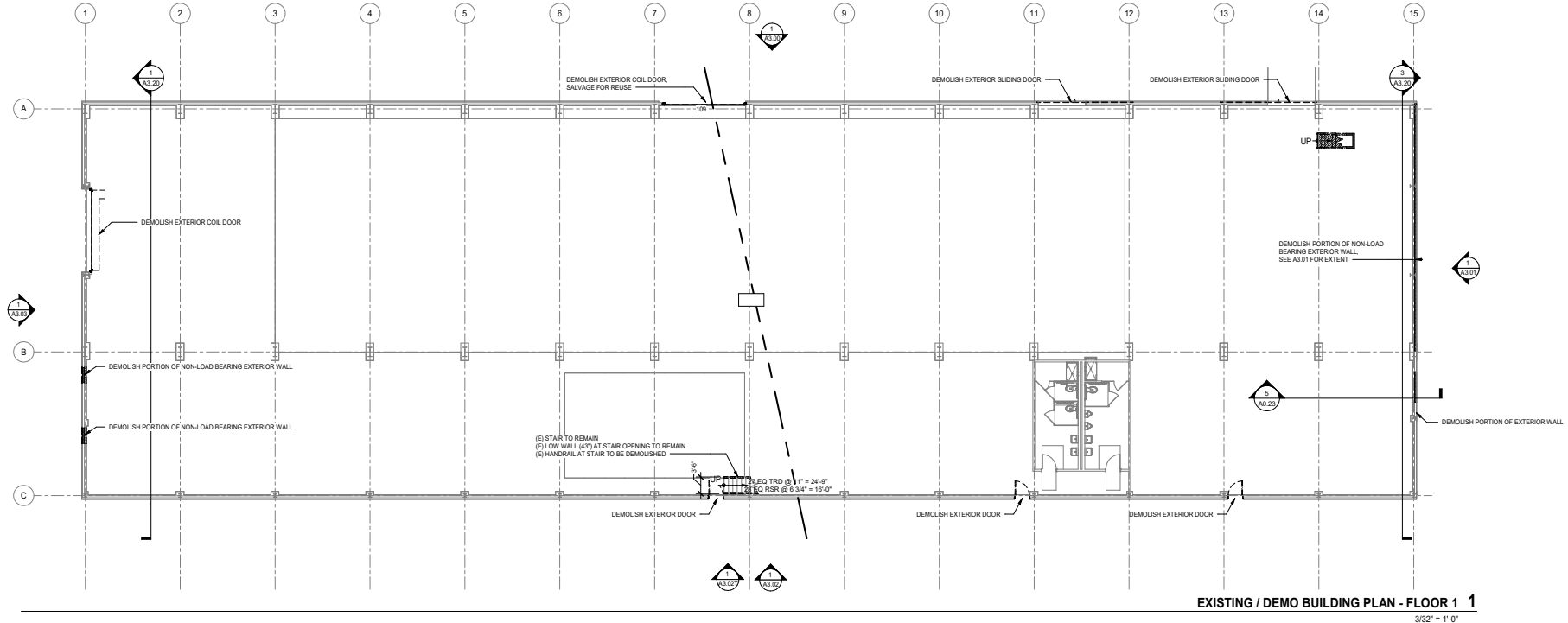
- 1600 amps @480 V 3 Phase
- Utility yard
- Waterfront location + patio
- 50' clear height
- 20 ton & 15 ton cranes
- Mezzanine
- 3 Glass roll-up doors
- Large grade roll-up door
- Outdoor patio
- 3 Ton hoist for boat launch
- Waterfront access with 2 launch locations
- New roof
- Heavy gas



1827 Clement Avenue

(Building 19) - 34,420 RSF

Advanced Manufacturing

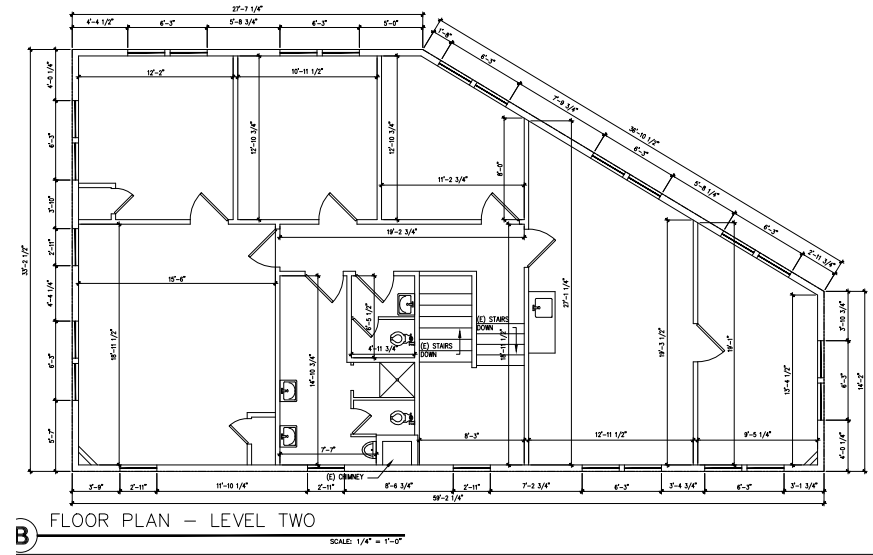
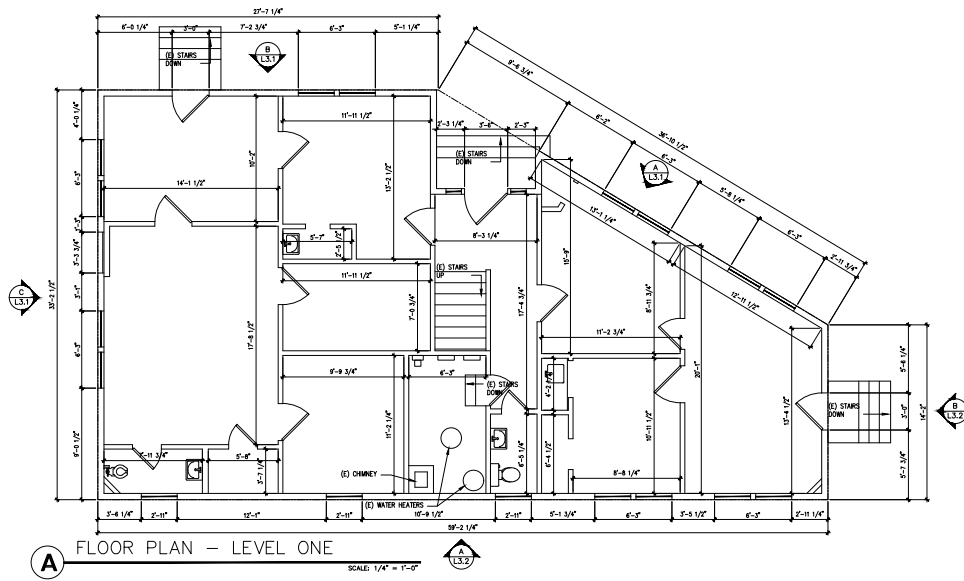


Although information has been obtained from sources deemed reliable, neither Owner nor JLL makes any guarantees, warranties or representations, express or implied, as to the completeness or accuracy as to the information contained herein. Any projections, opinions, assumptions or estimates used are for example only. There may be differences between projected and actual results, and those differences may be material. The Property may be withdrawn without notice. Neither Owner nor JLL accepts any liability for any loss or damage suffered by any party resulting from reliance on this information. If the recipient of this information has signed a confidentiality agreement regarding this matter, this information is subject to the terms of that agreement. ©2026. Jones Lang LaSalle Brokerage, Inc. All rights reserved.

1801 Clement Avenue

(Building 27) - 2,471 RSF

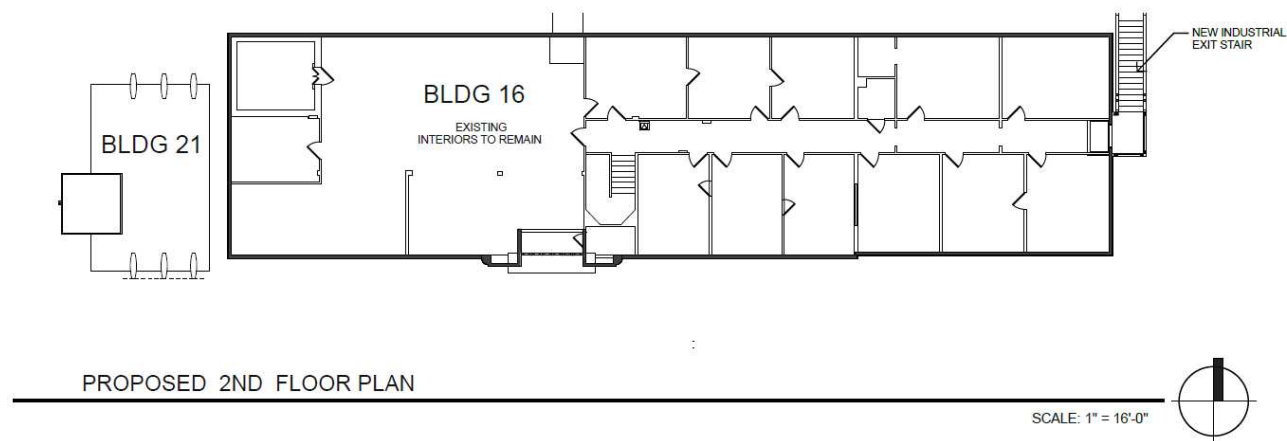
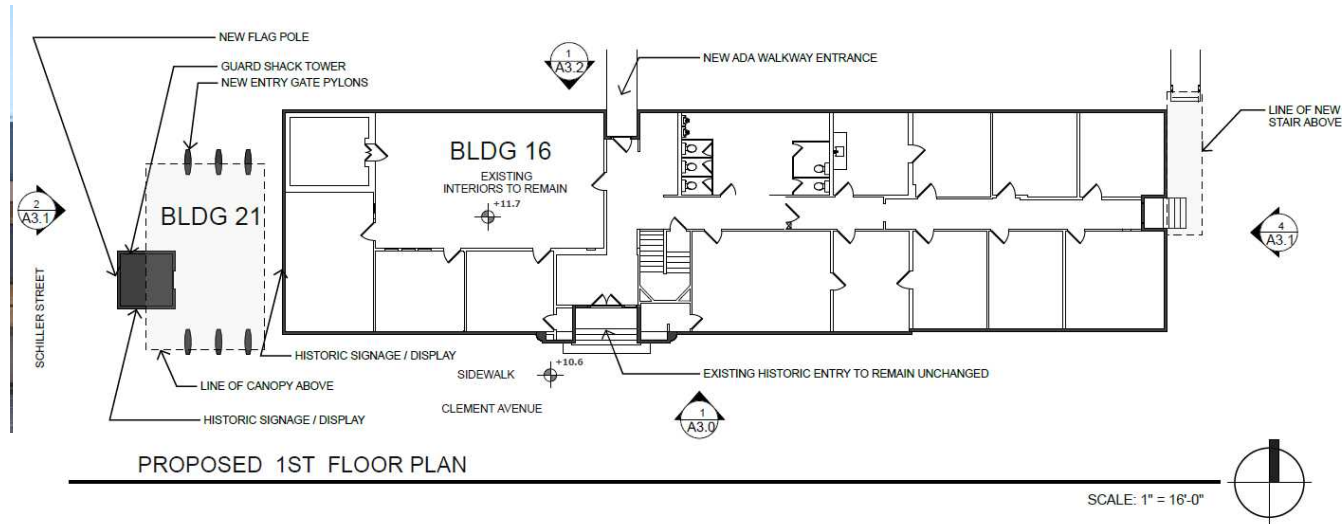
Office



1829 Clement Avenue

(Building 16) - 10,846 RSF

Office



Although information has been obtained from sources deemed reliable, neither Owner nor JLL makes any guarantees, warranties or representations, express or implied, as to the completeness or accuracy as to the information contained herein. Any projections, opinions, assumptions or estimates used are for example only. There may be differences between projected and actual results, and those differences may be material. The Property may be withdrawn without notice. Neither Owner nor JLL accepts any liability for any loss or damage suffered by any party resulting from reliance on this information. If the recipient of this information has signed a confidentiality agreement regarding this matter, this information is subject to the terms of that agreement. ©2026. Jones Lang LaSalle Brokerage, Inc. All rights reserved.

FOR LEASE

ALAMEDA MARINA

1827 Clement Avenue

1801 Clement Avenue

1829 Clement Avenue



Sam Swan

Managing Director

+1 510 388 6400

sam.swan@jll.com

CA RE License #00992868

Kristi Childers

Managing Director

+1 510 812 2878

kristi.childers@jll.com

CA RE License #01997043



Jones Lang LaSalle Brokerage, Inc.
Real Estate License# 01856260

Although information has been obtained from sources deemed reliable, neither Owner nor JLL makes any guarantees, warranties or representations, express or implied, as to the completeness or accuracy as to the information contained herein. Any projections, opinions, assumptions or estimates used are for example only. There may be differences between projected and actual results, and those differences may be material. The Property may be withdrawn without notice. Neither Owner nor JLL accepts any liability for any loss or damage suffered by any party resulting from reliance on this information. If the recipient of this information has signed a confidentiality agreement regarding this matter, this information is subject to the terms of that agreement. ©2026. Jones Lang LaSalle Brokerage, Inc. All rights reserved.