

# REPUBLIC BANK

Office Park



8035-8050 Hosbrook Road  
Cincinnati, OH 45236



8035



8040



## WELCOME TO REPUBLIC BANK OFFICE PARK

Republic Bank Office Park is a professional business campus that contains four existing office buildings, with a build-to-suit opportunity for a fifth building. Its location offers exposure on Interstate 71 via an electronic pylon sign and provides easy access for tenants and visitors being in the center of Interstate 275. Republic Bank Office Park offers a rare opportunity for potential tenants in the demanding Kenwood market.

8041



8050



AVAILABLE OFFICE SPACE IN AN UNMATCHED LOCATION

Multi-million-dollar renovations recently completed



HIGH 4:1,000  
PARKING RATIO



150,000 S.F.  
TOTAL



UP TO  
25,000 S.F.  
AVAILABLE



UNINTERRUPTED  
VIEWS



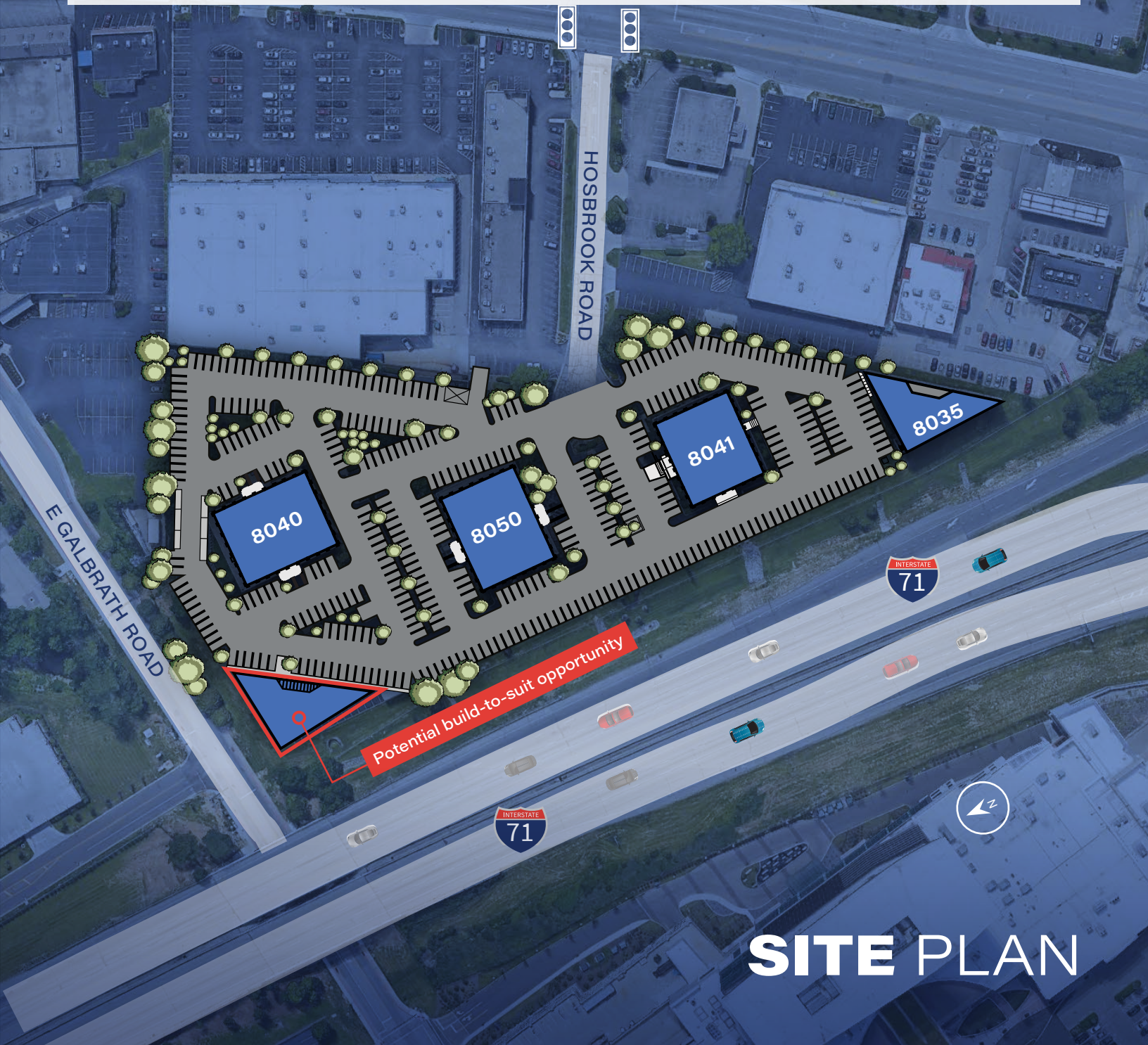
ON-SITE  
MANAGEMENT  
AND OWNERSHIP



POTENTIAL BTS  
OPPORTUNITY

## RENOVATIONS

- New common area hallway finishes
- Updated restrooms
- Upgraded security camera and access card system
- Each building exterior is repainted
- New parking lot
- Upgrade on exterior soffit and fascia
- New roofs on all buildings
- Lobby renovation for building 8035
- Building Conference room available
- New building access system added in 2025
- New entrance pylon sign
- Efficient solar tint on windows
- Landscape upgrades and enhancements



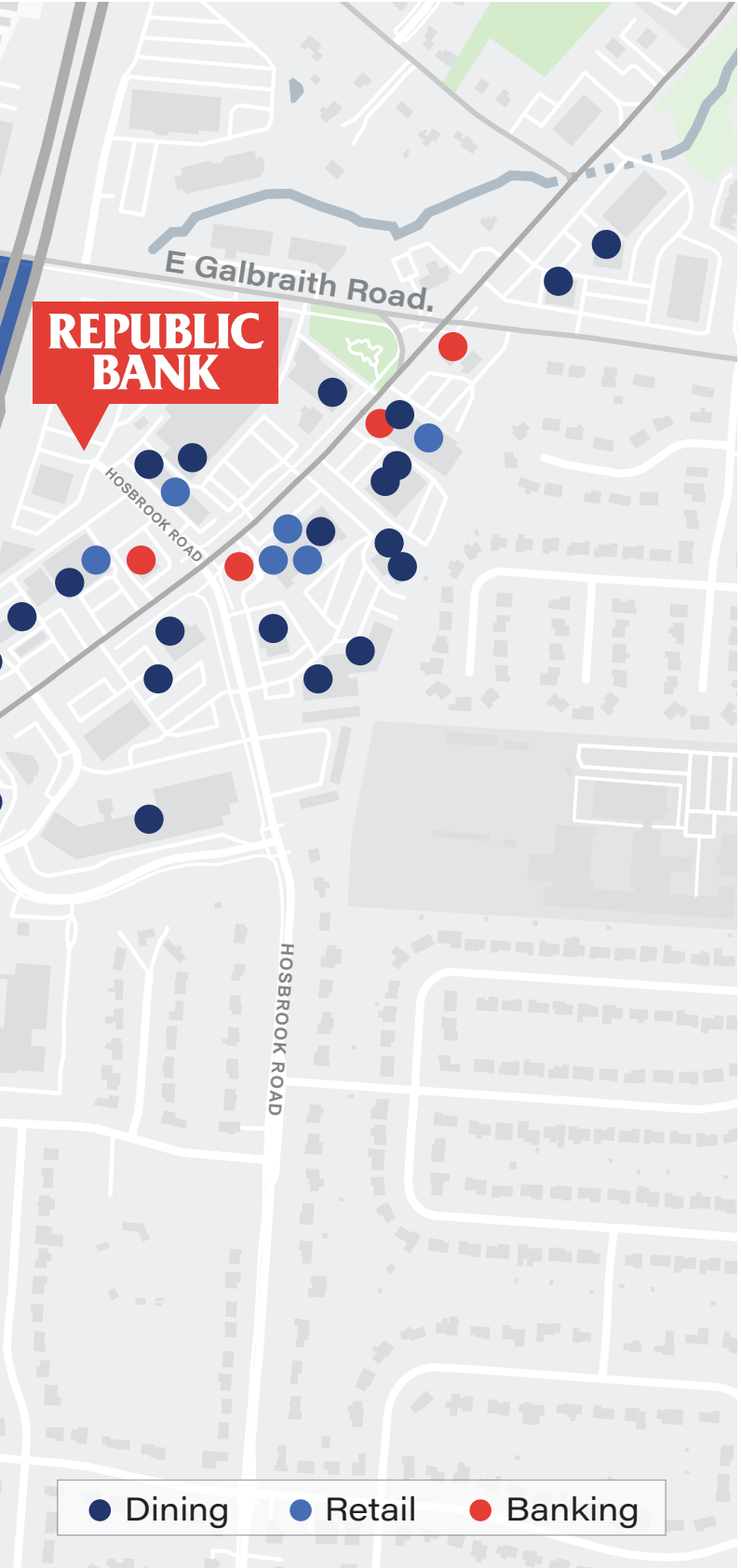
**SITE PLAN**

# THE RIGHT LOCATION

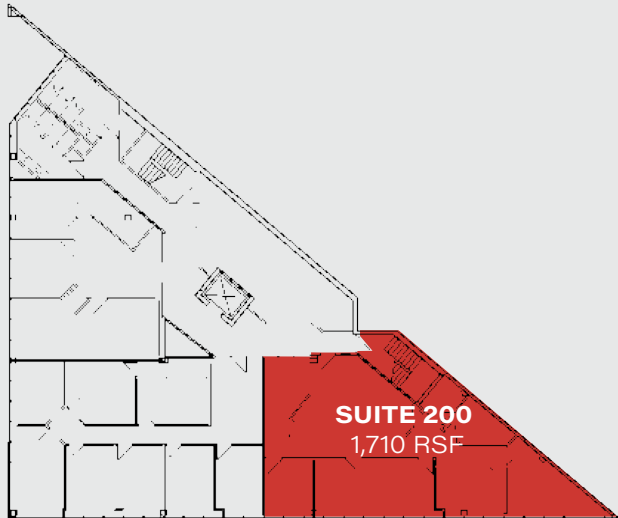
KENWOOD  
TOWNE CENTRE



NORDSTROM

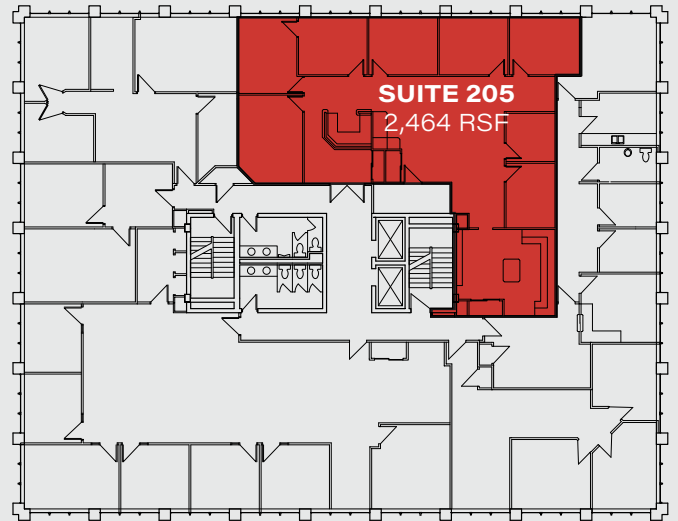


**8035 AVAILABLE SPACES**



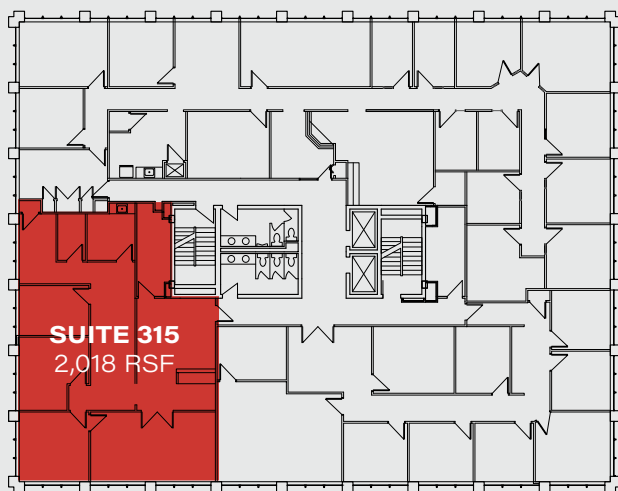
**8035 SECOND FLOOR**

**8040 AVAILABLE SPACES**

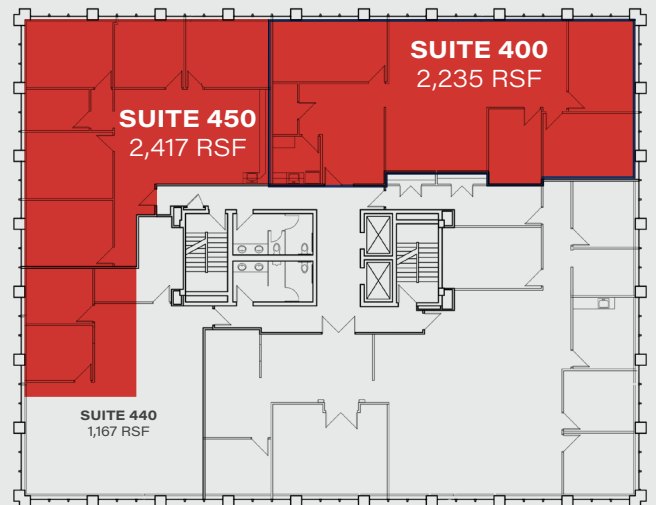


**8040 SECOND FLOOR**

**8040 AVAILABLE SPACES**

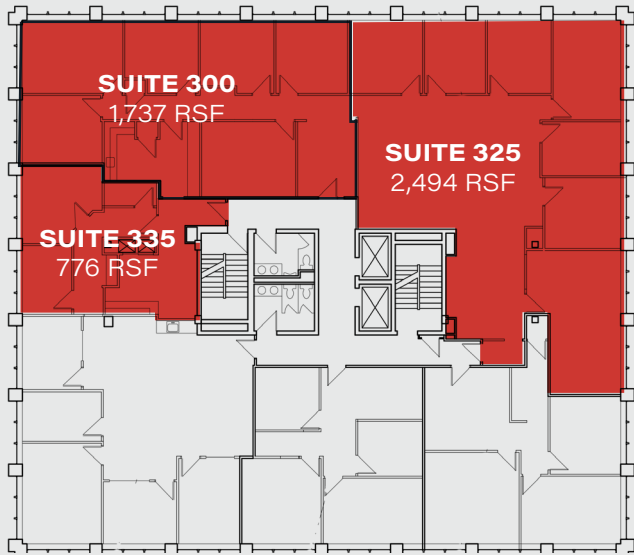


**8040 THIRD FLOOR**

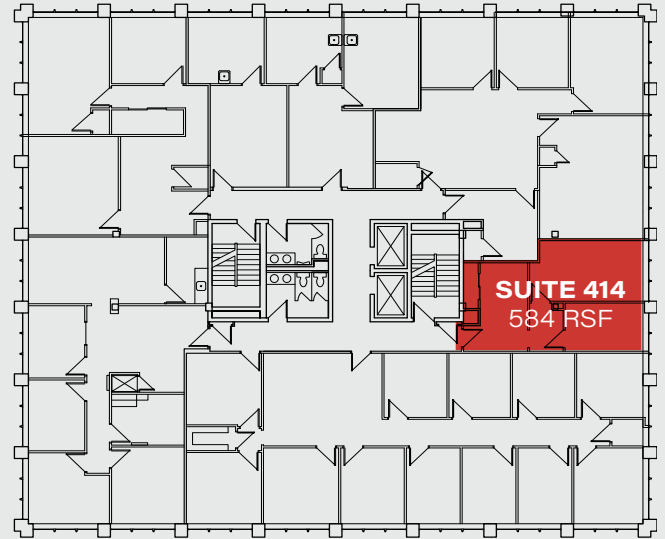


**8040 FOURTH FLOOR**  
4,652 RSF CONTIGUOUS

## 8041 AVAILABLE SPACES

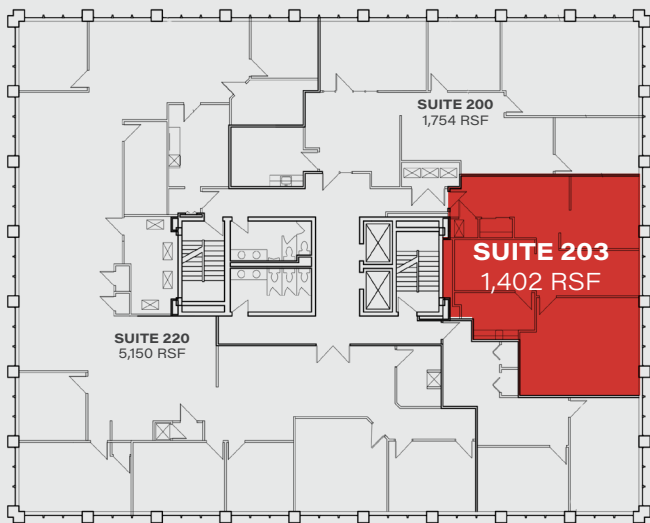


**8041 THIRD FLOOR**  
5,007 RSF CONTIGUOUS



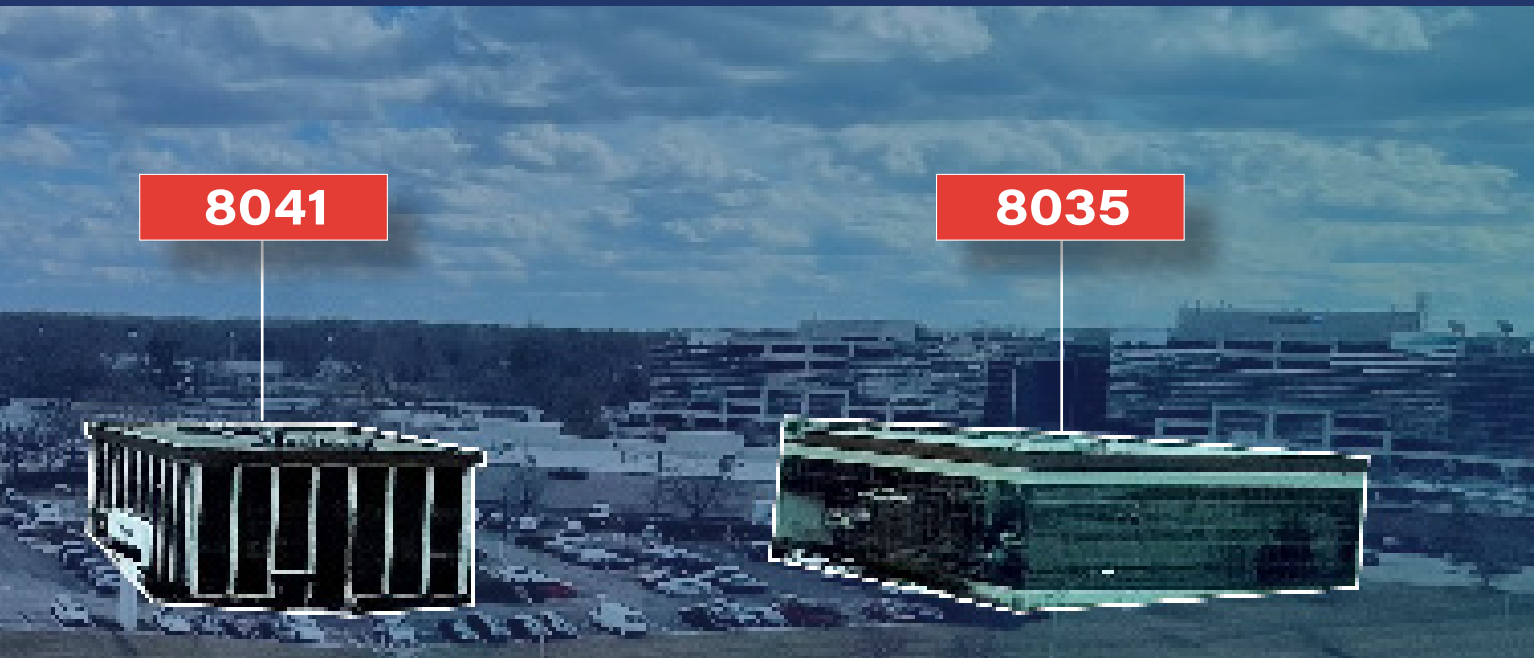
**8041 FOURTH FLOOR**

## 8050 AVAILABLE SPACES



**8050 SECOND FLOOR**





# REPUBLIC BANK

## Office Park

**Michelle Klingenberg**

513.719.3703  
michelle.klingenberg@jll.com

**Josh Gerth**

513.252.2178  
josh.gerth@jll.com

**Britney Aviles**

859.743.7034  
britney.aviles@jll.com



Although information has been obtained from sources deemed reliable, JLL does not make any guarantees, warranties or representations, express or implied, as to the completeness or accuracy as to the information contained herein. Any projections, opinions, assumptions or estimates used are for example only. There may be differences between projected and actual results, and those differences may be material. JLL does not accept any liability for any loss or damage suffered by any party resulting from reliance on this information. If the recipient of this information has signed a confidentiality agreement with JLL regarding this matter, this information is subject to the terms of that agreement. ©2026 Jones Lang LaSalle Brokerage, Inc. All rights reserved.