



Jones Lang LaSalle Midwest, Inc.

# LAND AVAILABLE

NEC 147TH & RAVINIA AVE  
ORLAND PARK, IL

2.3 Acres



**Steve Schwartz**

Senior Vice President  
+1 312 228 2157  
steve.schwartz@jll.com

**Joaquin Manriquez**

Vice President  
+1 312 228 3094  
joaquin.manriquez@jll.com

# DEVELOPMENT OPPORTUNITY

This **2.3-acre site** offers exceptional visibility just off LaGrange Road, adjacent to Village Hall and across from Orland Park Mall. With **utilities and detention already in place**, the property is primed for immediate development. **VCD (Village Center District) zoning** accommodates **medical office, multi-family residential, senior housing, daycare, or professional office** uses. The combination of prepared infrastructure, high-traffic location, and flexible zoning creates a rare opportunity in one of Orland Park's most highly-trafficked corridors.

## PROPERTY HIGHLIGHTS

**2.3**  
Acres Available

**VCD**  
Zoning

**62,273**  
Households in 5 Mi

**40,300**  
VPD on LaGrange Rd

**156,095**  
Residents in 5 Mi

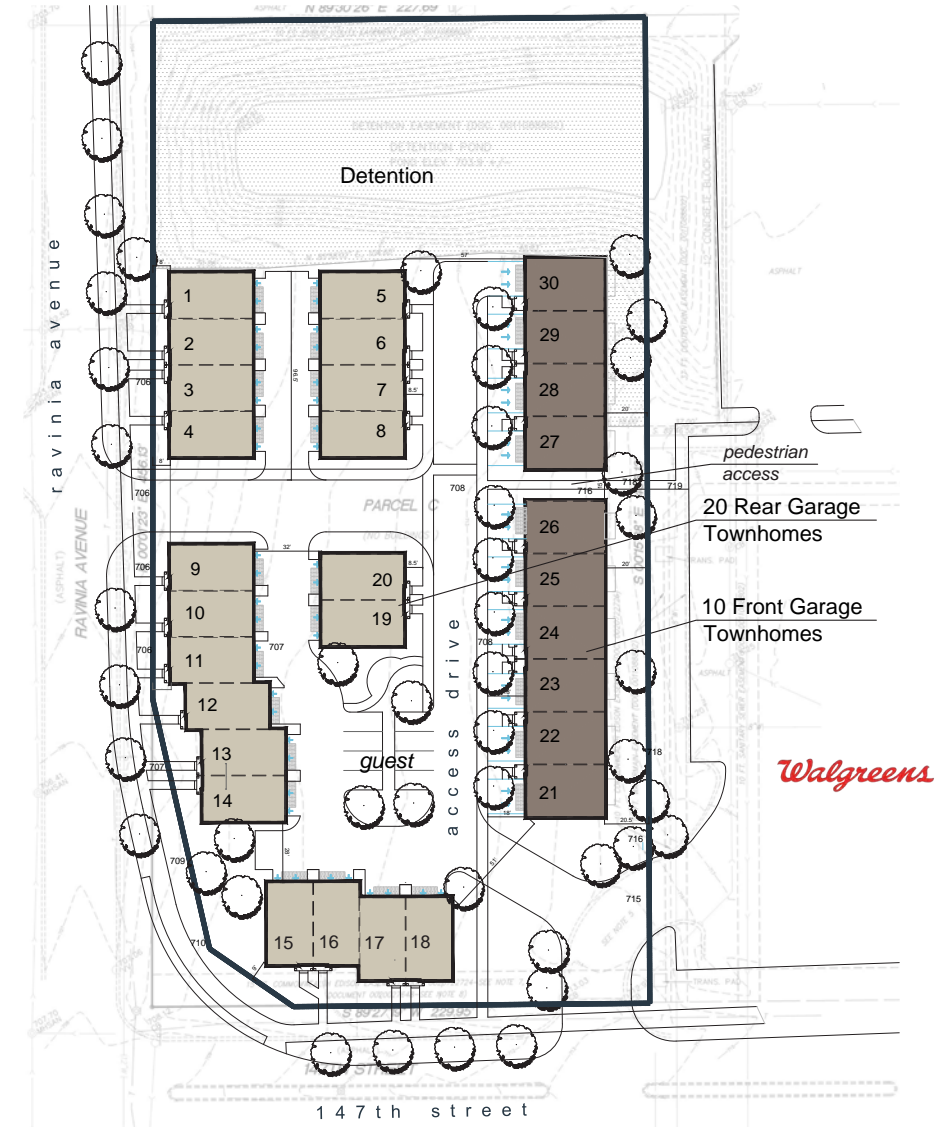
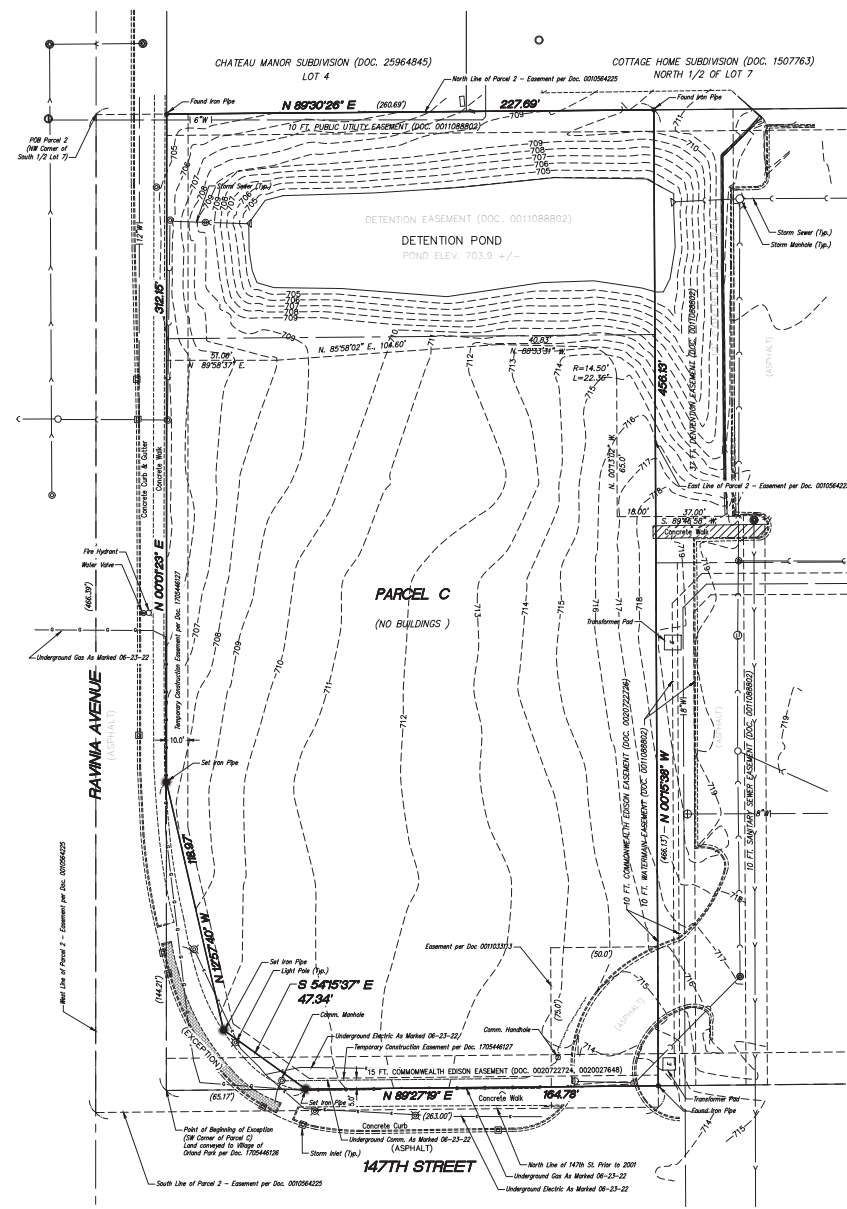
**12M**  
Visitors Annually to Orland Square





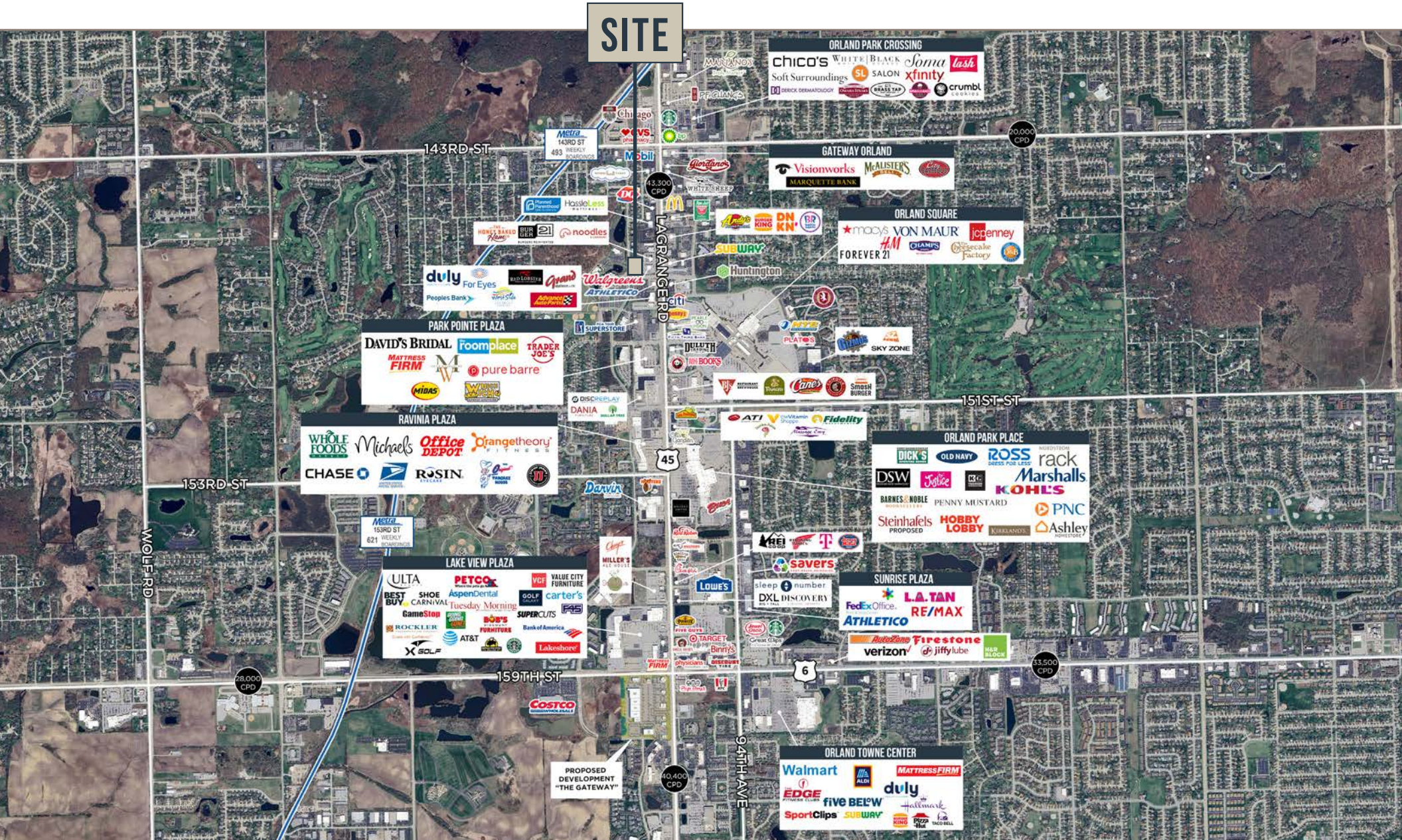
01

FUTURE DEVELOPMENT AREA



02

SITE SURVEY & PROPOSED RESIDENTIAL DEVELOPMENT



# ABOUT ORLAND PARK

Orland Park is a thriving southwestern suburb of Chicago located approximately 25 miles from the Loop in Cook County. With a population of around 58,000 residents, it ranks as one of the largest and most prosperous communities in the region. The village is known for its strong retail presence anchored by Orland Square Mall, excellent

school districts, and family-friendly atmosphere. Orland Park maintains a healthy mix of residential neighborhoods, commercial corridors, and professional office spaces, supported by convenient access via I-80, LaGrange Road, and other major thoroughfares.

## SITE DEMOGRAPHICS

	1 MILE	3 MILES	5 MILES
POPULATION	8,882	64,684	156,095
DAYTIME POPULATION	17,956	65,768	146,238
AVG HOUSEHOLD INCOME	\$122,041	\$135,810	\$140,061
HOUSEHOLDS	3,759	26,034	62,273

# LAND AVAILABLE

**NEC 147TH & RAVINIA AVE  
ORLAND PARK, IL**

## CONTACT:

### **Steve Schwartz**

Senior Vice President  
+1 312 228 2157  
steve.schwartz@jll.com

### **Joaquin Manriquez**

Vice President  
+1 312 228 3094  
joaquin.manriquez@jll.com

Although information has been obtained from sources deemed reliable, neither Owner nor JLL makes any guarantees, warranties or representations, express or implied, as to the completeness or accuracy as to the information contained herein. Any projections, opinions, assumptions or estimates used are for example only. There may be differences between projected and actual results, and those differences may be material. The Property may be withdrawn without notice. Neither Owner nor JLL accepts any liability for any loss or damage suffered by any party resulting from reliance on this information. If the recipient of this information has signed a confidentiality agreement regarding this matter, this information is subject to the terms of that agreement. ©2026 Jones Lang LaSalle IP, Inc. All rights reserved.

