

**9075 W. DIABLO DRIVE
LAS VEGAS, NV 89113**



CLASS A OFFICE SPACE FOR LEASE



Jones Lang LaSalle Brokerage, Inc. | NV License #B.1000836



BUILDING HIGHLIGHTS

The property at 9075 W. Diablo Drive is perfectly positioned in one of Las Vegas's rapidly expanding submarkets.

Nestled alongside CC-215, it is surrounded by a wealth of amenities such as restaurants, shopping centers, hospitality venues, and retail services. Additionally, the new Durango Station Resort and Casino is located just about 2 miles away, enhancing the area's appeal.



OFFICE WITH A VIEW

- Enjoy spectacular panoramic views of the stunning Red Rock Mountains and the Las Vegas Strip.



AIR TRAVEL

- Just 11 miles away from Harry Reid International Airport, ensuring convenient connectivity.



EASY ACCESS

- Benefit from immediate access to the CC-215 Beltway via the Russell Road interchange.

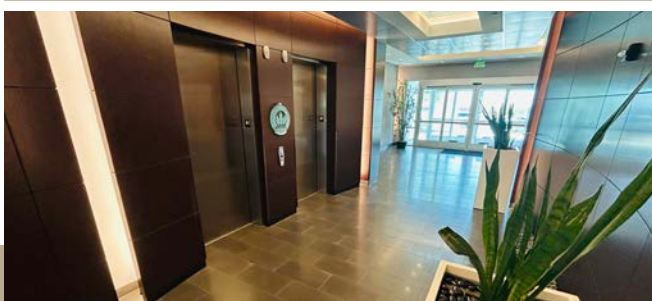


PRIME LOCATION

- Strategically positioned for convenience, accessibility, and amenities.



Suite 305

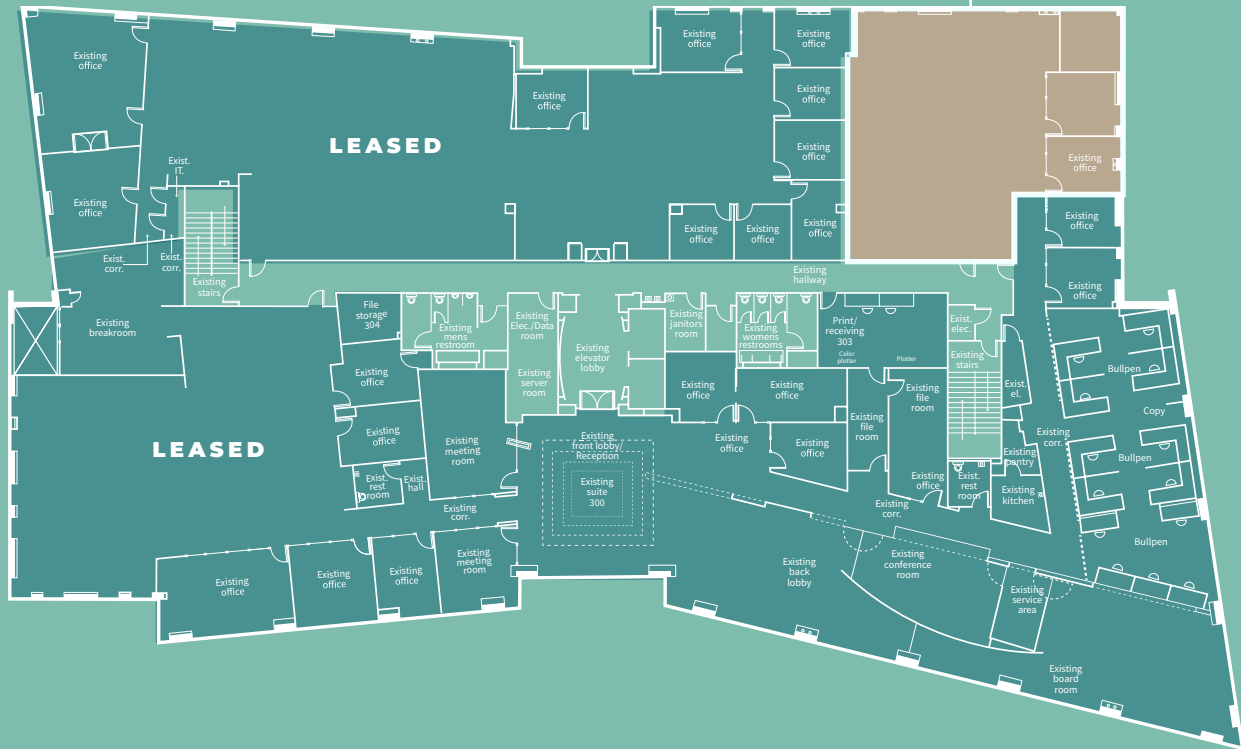


AVAILABILITIES

3RD FLOOR

SUITE 305

2,288 RSF



Suite 305



Suite 305



LET'S GET IN TOUCH

Travis Landes, SIOR

Executive Vice President

702 830 1512

NV Lic. #S.177027

travis.landes@jll.com

Nick Barber, SIOR

Managing Director

702 360 4972

NV Lic. #S.58027

nick.barber@jll.com

Lilly Kossoff

Senior Associate

702 522 5107

NV Lic. #S.195790

lillian.kossoff@jll.com



1980 Festival Plaza Drive, Suite 250, Las Vegas, NV 89135

Although information has been obtained from sources deemed reliable, neither Owner nor JLL makes any guarantees, warranties or representations, express or implied, as to the completeness or accuracy as to the information contained herein. Any projections, opinions, assumptions or estimates used are for example only. There may be differences between projected and actual results, and those differences may be material. The Property may be withdrawn without notice. Neither Owner nor JLL accepts any liability for any loss or damage suffered by any party resulting from reliance on this information. If the recipient of this information has signed a confidentiality agreement regarding this matter, this information is subject to the terms of that agreement. © 2026 Jones Lang LaSalle IP, Inc. All rights reserved. Portions of this work product were created with generative AI.