



For lease

215 Chesterfield Industrial Blvd,
Chesterfield, MO 63005

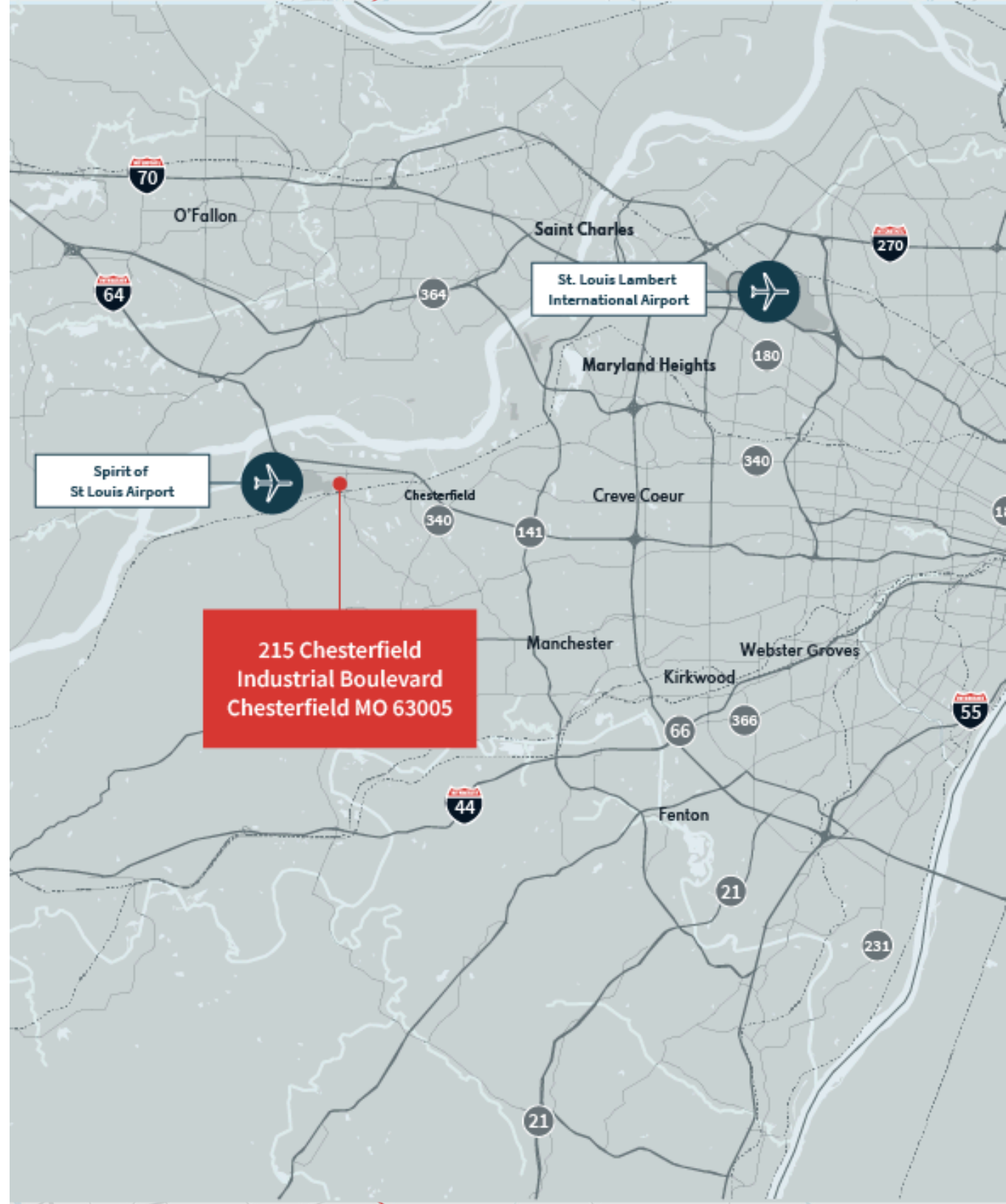
±3,000 SF office warehouse space

215 Chesterfield Industrial Blvd

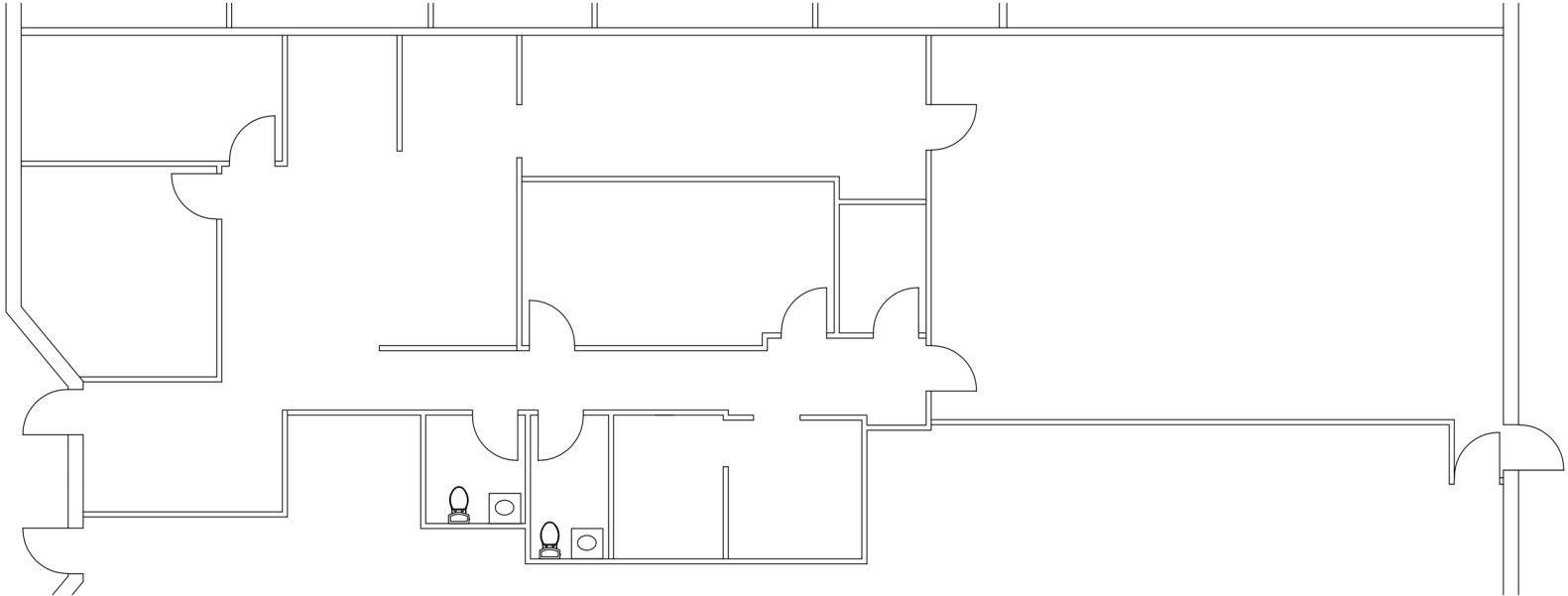
- ±3,000 SF office / warehouse space
- 14' ceilings in warehouse
- 2/1,000 SF parking ratio
- 3 phase, 200 amp electric

Lease Rate:
\$12.00/ SF NNN

Located in Chesterfield just 1 mile to I-64 and
1.5 miles to Spirit of St. Louis Airport

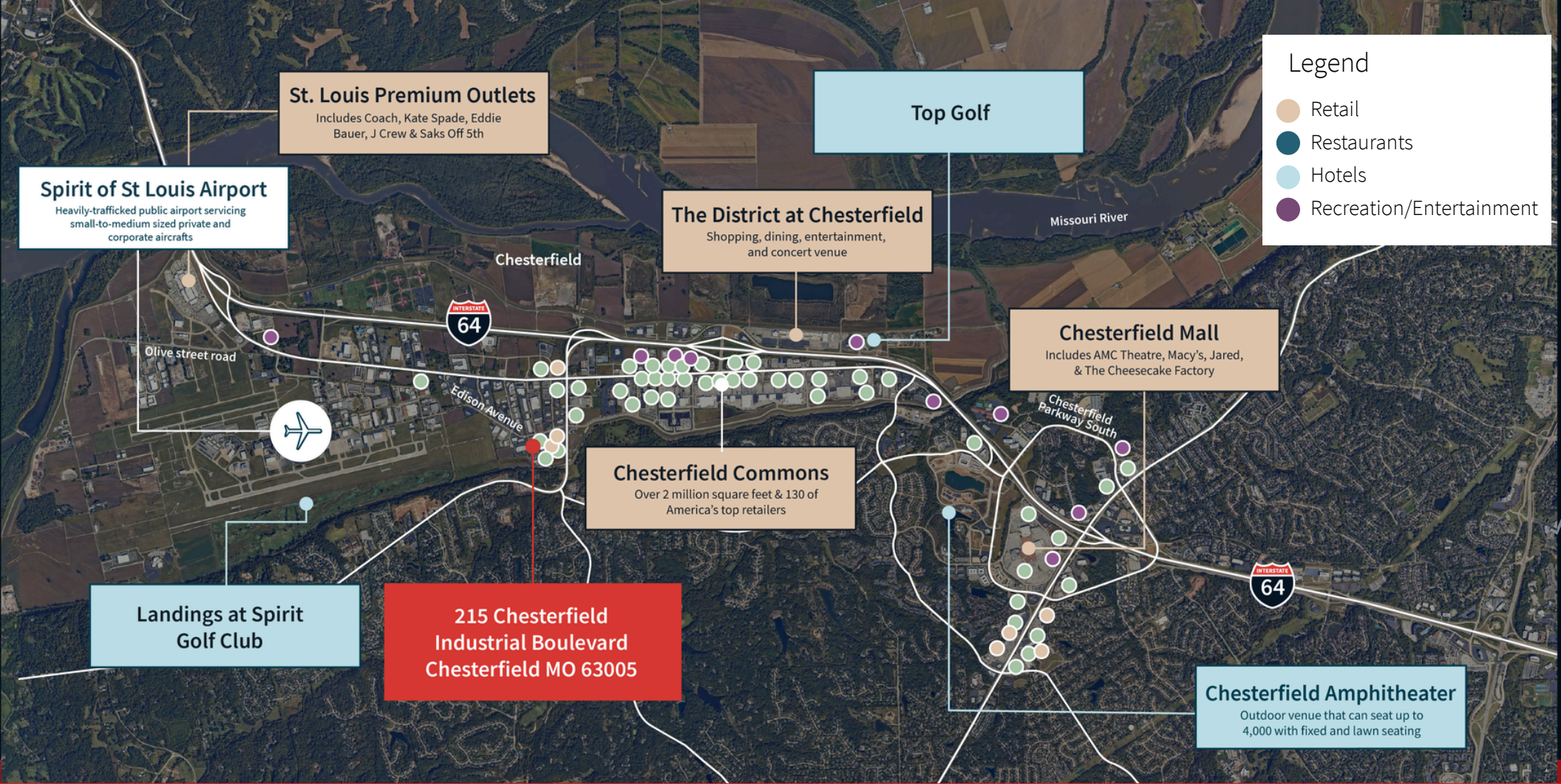


Building Plan



Office and warehouse space





Legend

- Retail
- Restaurants
- Hotels
- Recreation/Entertainment

St. Louis Premium Outlets
Includes Coach, Kate Spade, Eddie Bauer, J Crew & Saks Off 5th

Top Golf

Spirit of St Louis Airport
Heavily-trafficked public airport servicing small-to-medium sized private and corporate aircrafts

The District at Chesterfield
Shopping, dining, entertainment, and concert venue

Chesterfield Mall
Includes AMC Theatre, Macy's, Jared, & The Cheesecake Factory

Chesterfield Commons
Over 2 million square feet & 130 of America's top retailers

Landings at Spirit Golf Club

215 Chesterfield Industrial Boulevard
Chesterfield MO 63005

Chesterfield Amphitheater
Outdoor venue that can seat up to 4,000 with fixed and lawn seating

Will Meehan
Senior Vice President
will.meehan@jll.com
+1 314 368 6201

Jones Lang LaSalle Americas, Inc.

Although information has been obtained from sources deemed reliable, neither Owner nor JLL makes any guarantees, warranties or representations, express or implied, as to the completeness or accuracy as to the information contained herein. Any projections, opinions, assumptions or estimates used are for example only. There may be differences between projected and actual results, and those differences may be material. The Property may be withdrawn without notice. Neither Owner nor JLL accepts any liability for any loss or damage suffered by any party resulting from reliance on this information. If the recipient of this information has signed a confidentiality agreement regarding this matter, this information is subject to the terms of that agreement. ©2023. Jones Lang LaSalle Brokerage, Inc. All rights reserved.