 **JLL** SEE A BRIGHTER WAY

Presented on behalf of

**QUALICO**<sup>®</sup>  
PROPERTIES

# For lease

## Builders Park

5555 - 2 Street SE, Calgary, AB

- Central Southeast multi-tenant Industrial Park
- Flexible zoning to accommodate a variety of uses
- Close access to retail amenities and City Transit
- Immediate access to Macleod Trail, Blackfoot Trail, Deerfoot Trail and Downtown

# Property Details

**District:** Manchester

**Loading:** 5 - Drive-In Doors

**Zoning:** C-COR3 (Commercial-Corridor 3)

**Available:** Immediately

**Building Size:** 11,423 s.f.  
(demising options potentially available)

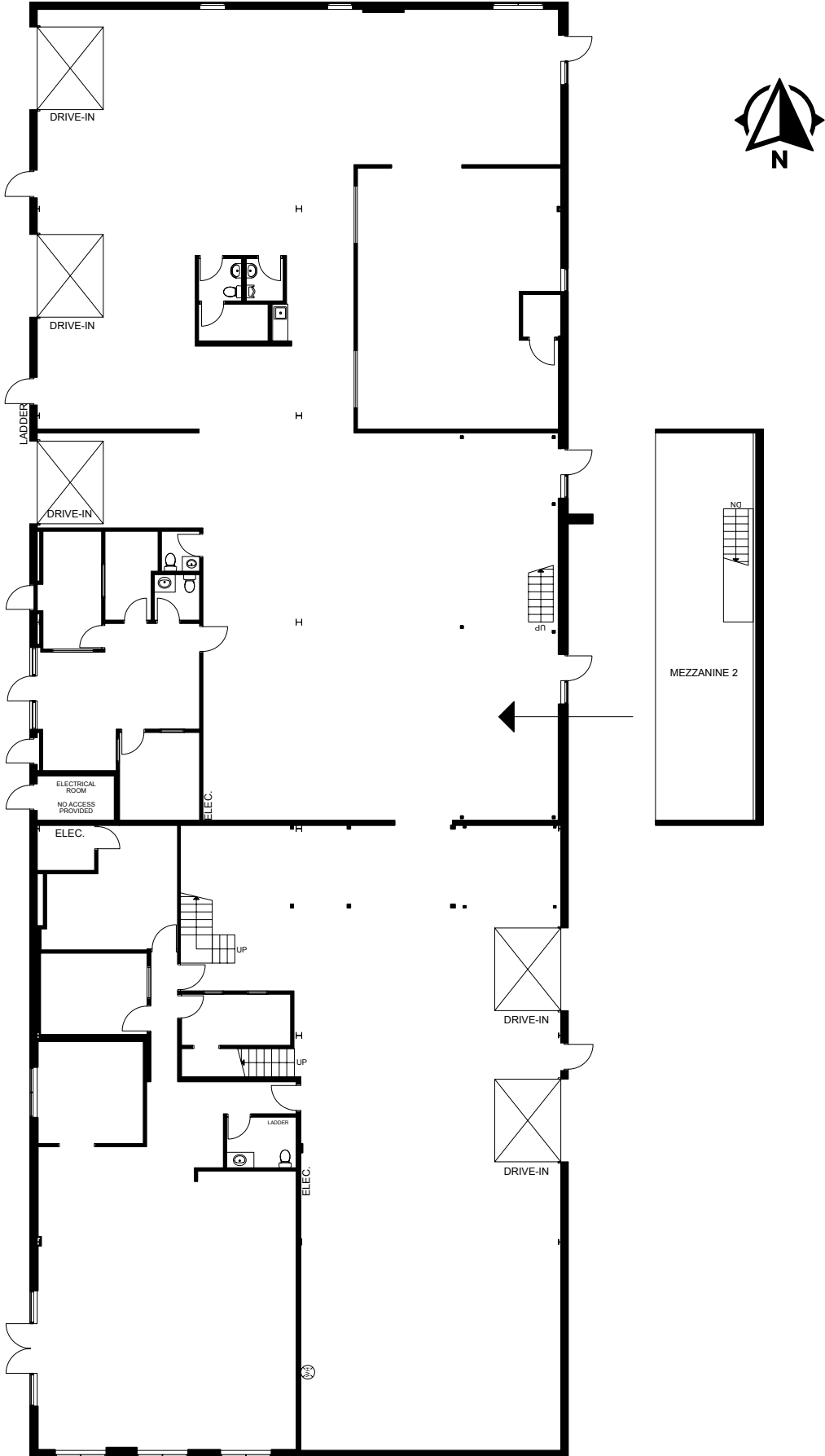
**Op. Costs:** \$6.77 p.s.f. + Admin Fee

**Ceiling Height:** 15'

**Lease Rate:** Market



# Floor Plan



# Location Map



# Drive Times



Blackfoot Trail

3 mins. | 1 km



Deerfoot Trail

7 mins. | 4.2 km



Macleod Trail

3 mins. | 1.1 km



Downtown Calgary

12 mins. | 5.5 km



Glenmore Trail

4 mins. | 2.2 km



Calgary Int. Airport

24 mins. | 21.8 km

# Contact us

## Carey Koroluk

Lead Broker  
Vice President  
+1 403 456 2346  
carey.koroluk@jll.com

## Austin Smith

Lead Broker  
Vice President  
+1 403 456 2197  
austin.smith@jll.com

## Troy Robinson

Lead Broker  
Associate  
+1 403 670 7353  
troy.robinson@jll.com

## Marshall Toner

EVP, National Industrial  
+1 403 456 2214  
marshall.toner@jll.com

## Ryan Haney

Executive Vice President  
+1 403 456 2221  
ryan.haney@jll.com

## Chris Saunders

Executive Vice President  
+1 403 456 2218  
chris.saunders@jll.com



jll.ca