

**3.28 AC
Total**

jll.com

For Sale

Land - 3.28 AC

4444 Business Route 220
Bedford, PA 15522

Rick O'Brien, SIOR
rick.obrien@jll.com
412.208.1403

Greg Hopkins
greg.hopkins@jll.com
412.770.5295

Alec Staiger
alec.staiger@jll.com
412.977.4184



SITE PLAN



1 2.73 Acres

2 0.55 Acres

PROPERTY SPECIFICATIONS

Land Area	3.28 AC total
Available parcels	0.55 AC and 2.73 AC
Zoning	No Zoning Bedford County, PA
Parcel #	E.08-D.04-048; E.08-D.04-045

HIGHLIGHTS

- Easy access to routes 220 and 99
- Proven business location



KEY DISTANCES

0.25 miles (2 min) to RT 220

0.58 miles (5 min) to I-76

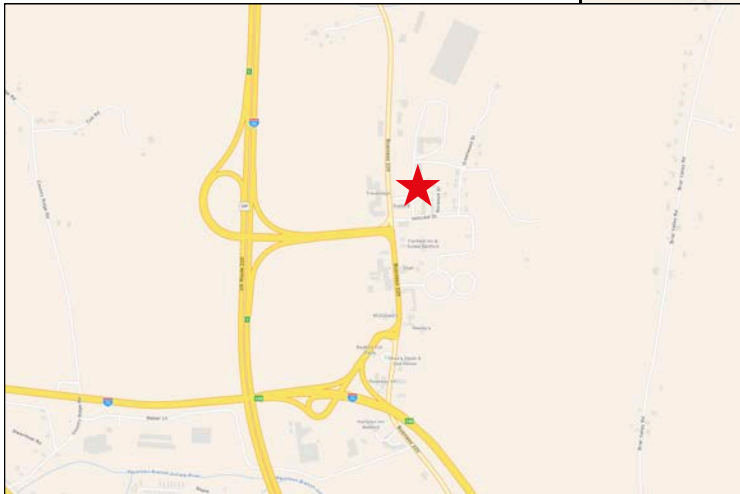
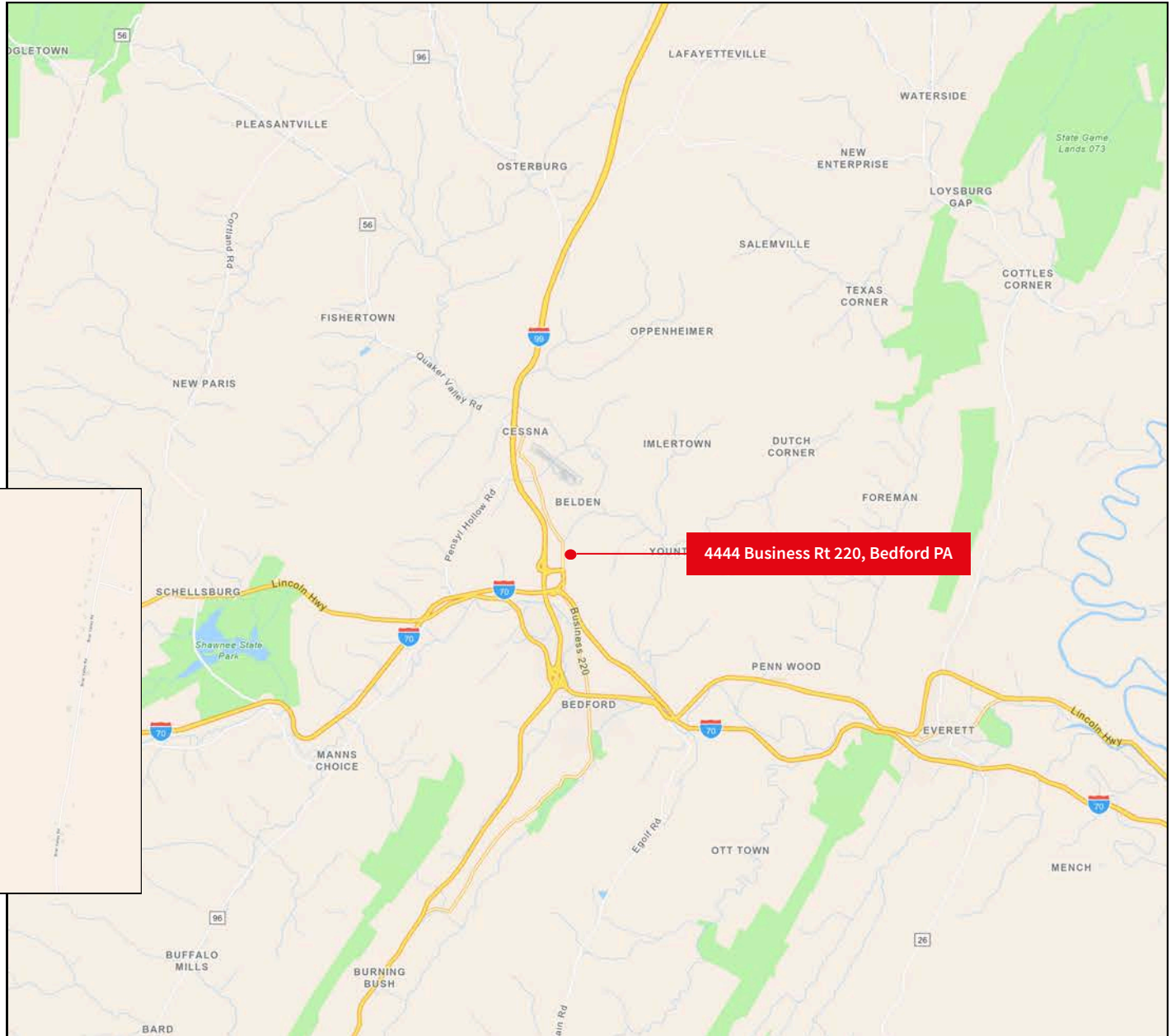
0.72 miles (7 min) to I-99

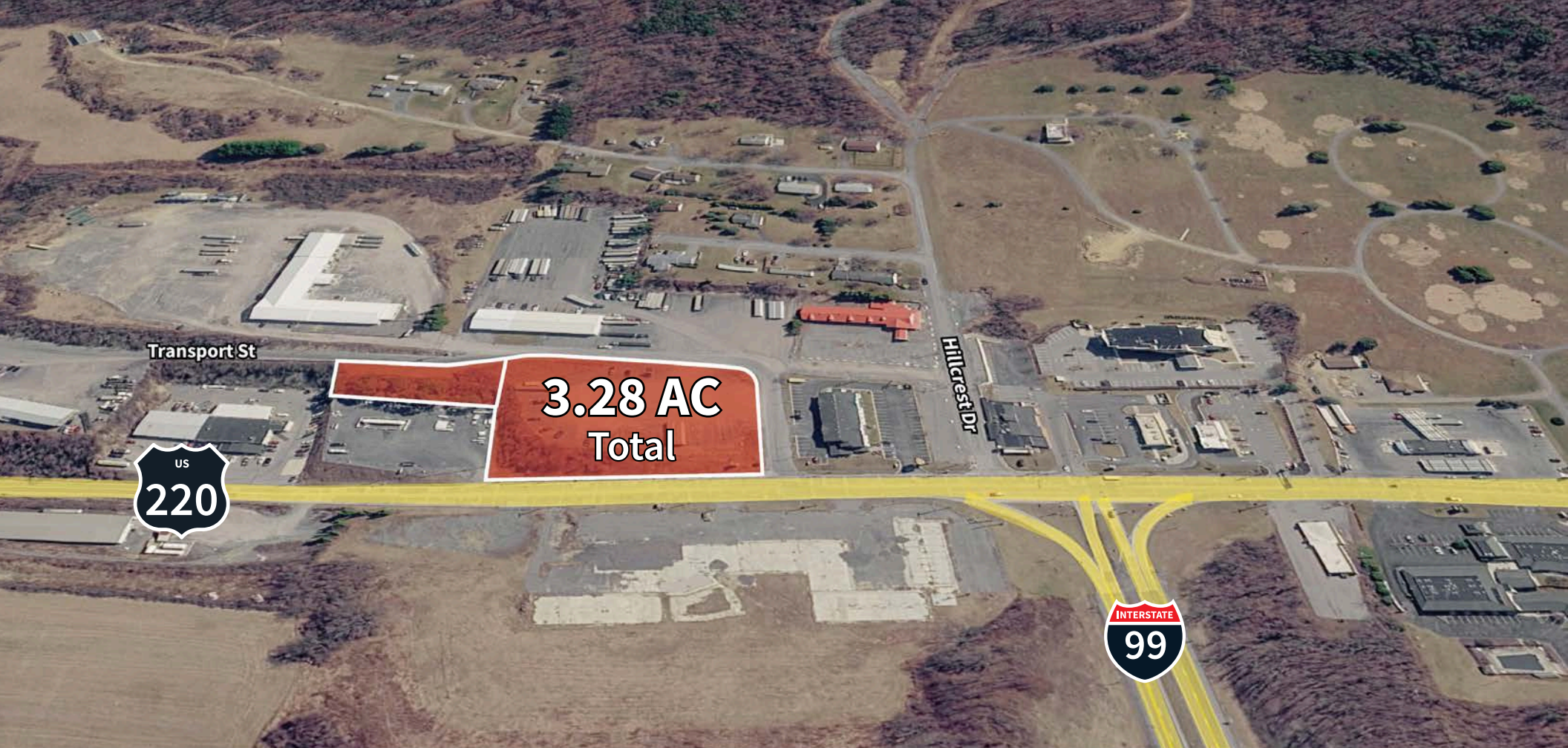
38 miles (49 min) to Johnstown, PA

40.8 miles (47 min) to Altoona, PA

81.3 miles (1 hr 17 min) to I-80

123 miles (2 hr 1 min) to PIT Airport





Transport St

Hillcrest Dr

**3.28 AC
Total**



DISCLAIMER: Although information has been obtained from sources deemed reliable, Owner, Jones Lang LaSalle, and/or their representatives, brokers or agents make no guarantees as to the accuracy of the information contained herein, and offer the Property without express or implied warranties of any kind. The Property may be withdrawn without notice. If the recipient of this information has signed a confidentiality agreement regarding this matter, this information is subject to the terms of that agreement. ©2026. Jones Lang LaSalle. All rights reserved.

jll.com

Contacts

Rick O'Brien, SIOR
rick.obrien@jll.com
412.208.1403

Greg Hopkins
greg.hopkins@jll.com
412.770.5295

Alec Staiger
alec.staiger@jll.com
412.977.4184

