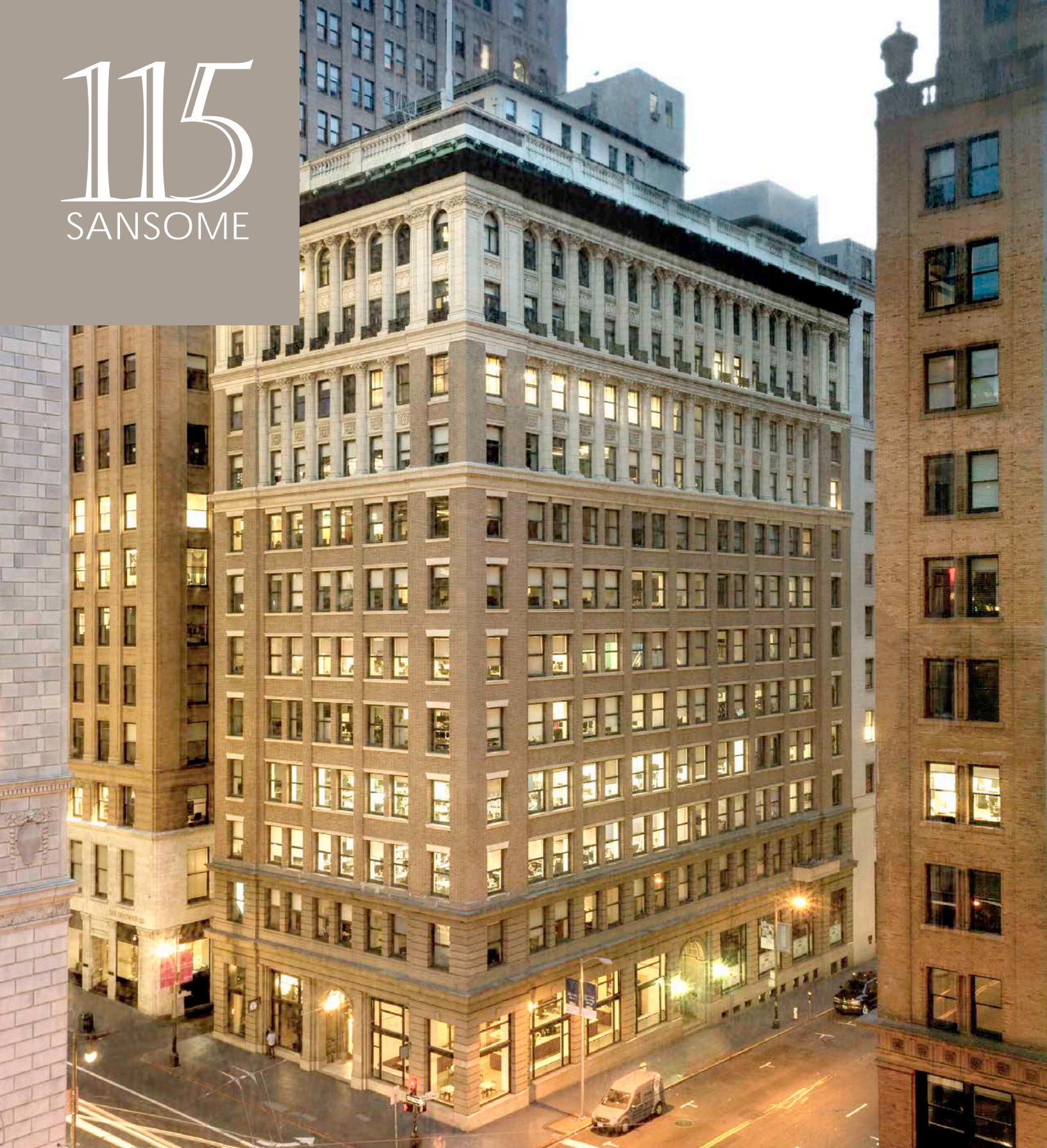


# 115

SANSOME



**WES POWELL**

+1 415 395 4901

wes.powell@jll.com

RE License #1702003

**CHRIS HOLLAND**

+1 415 354 6917

chris.holland@jll.com

RE License #01474598



Jones Lang Lasalle Brokerage, Inc.  
Real estate License #: 01856260

# 115

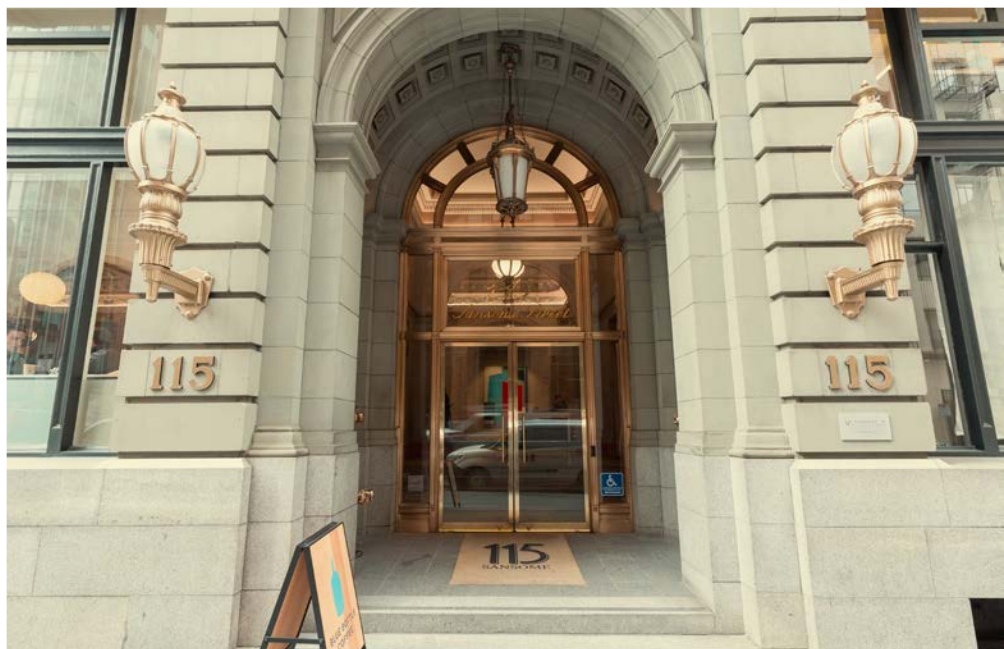
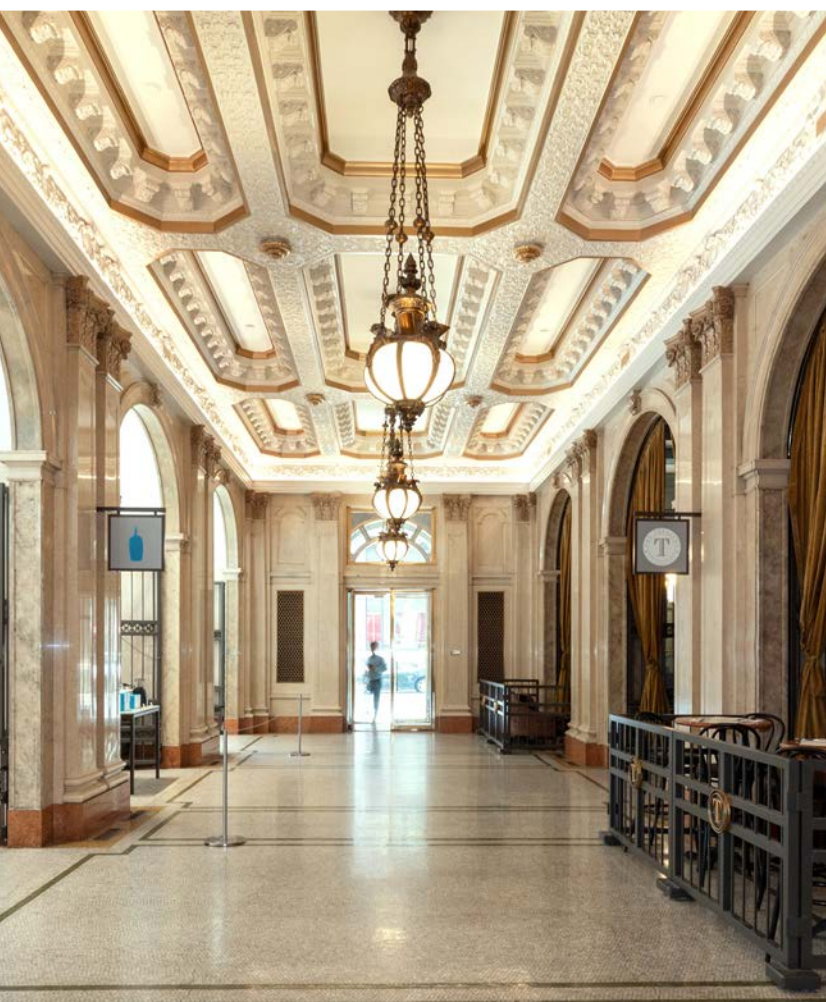
SANSOME

## THE BUILDING

Built in 1912 to be the headquarters for Standard Oil Company, 115 Sansome is A San Francisco landmark and exquisite 19th century French Beaux-Arts masterpiece.

It has a total of 118,100 square feet of highly improved office and storage space with exceptional ground floor retail amenities including a sophisticated cocktail lounge and eatery, The Treasury and wildly-popular Blue Bottle Coffee, and the Shota, a Japanese sushi restaurant with seasonal items flown in from the Toyosu Fish Market in Tokyo.

There are 14 stories with the penthouse space located on both the 14th & 15th floor. The property is located less than one block from Market Street, home to San Francisco's Vast public transit network offering excellent connectivity to the entire Bay Area.



# PROPERTY

San Francisco's premier  
creative boutique building

# FEATURES



Efficient & Flexible  
Floor Plates



Exceptional Location,  
Steps away from  
BART/Muni/Bus/Rail



Exposed  
concrete floor,  
ceilings, and brick



Operable  
copper-clad  
windows



Large secure  
bike storage



Showers on site



Storage units



Cocktail lounge  
offering elevated  
drinks and new  
American nibbles



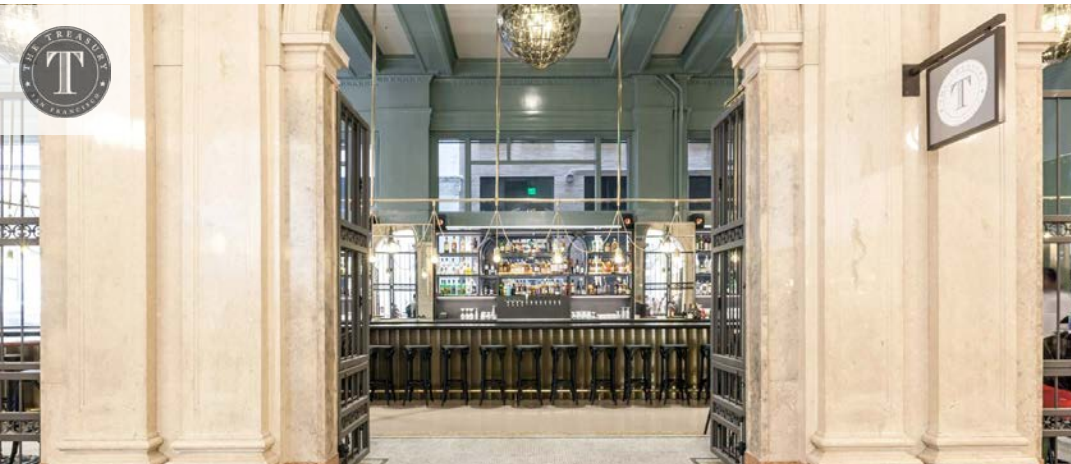
BLUE BOTTLE  
COFFEE

Specialty coffee  
roaster and brewer



THE SHOTA

Seasonally inspired  
Japanese  
tasting menu





# SECOND FLOOR AMENITY CENTER



VIRTUAL TOUR

Experience high end furnishings with a collaborative and flexible layout



# Suite 300

9,943 RSF

- Available August 1, 2026
- Fully furnished creative floor
- 4 conference rooms
- 9 phone booths
- 54 workstations
- Kitchen
- Mother's room
- IT/storage closet
- Locker room with shower

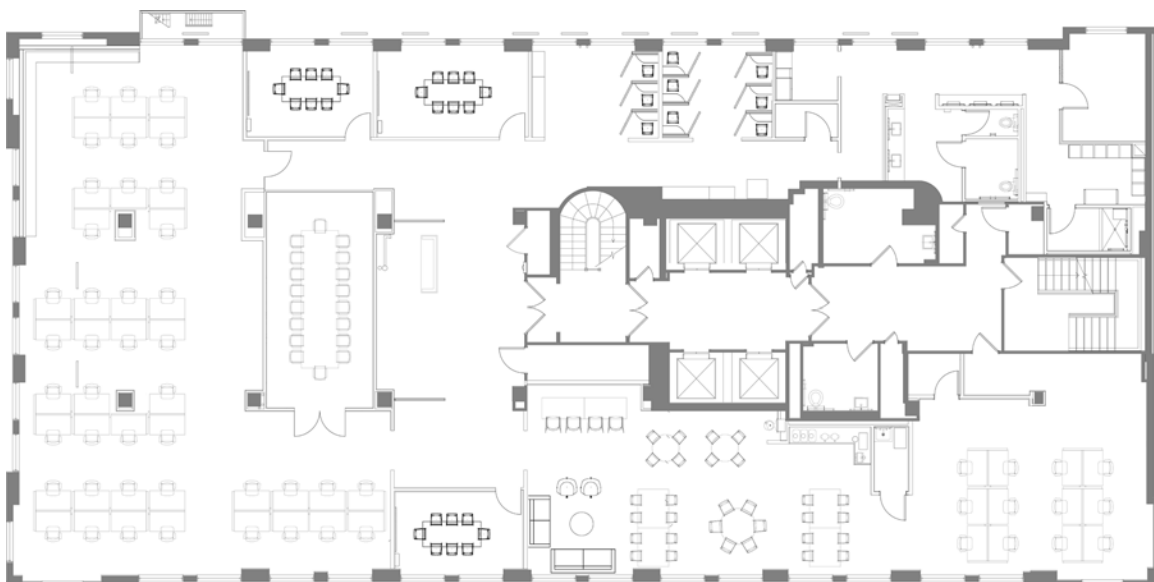
115  
SANSOME



High end furnishings with collaborative and flexible layouts

VIRTUAL TOUR

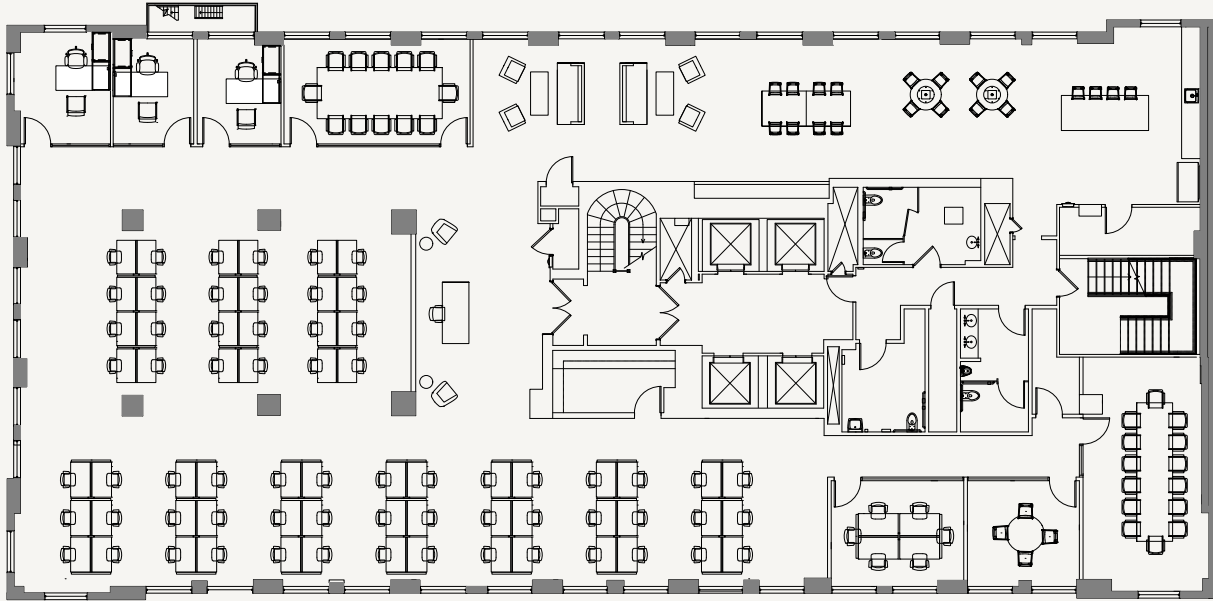
\*Hypothetical Floor Plan



# Suite 400

9,198 RSF

115  
SANSOME



**High end furnishings** with collaborative and flexible layouts

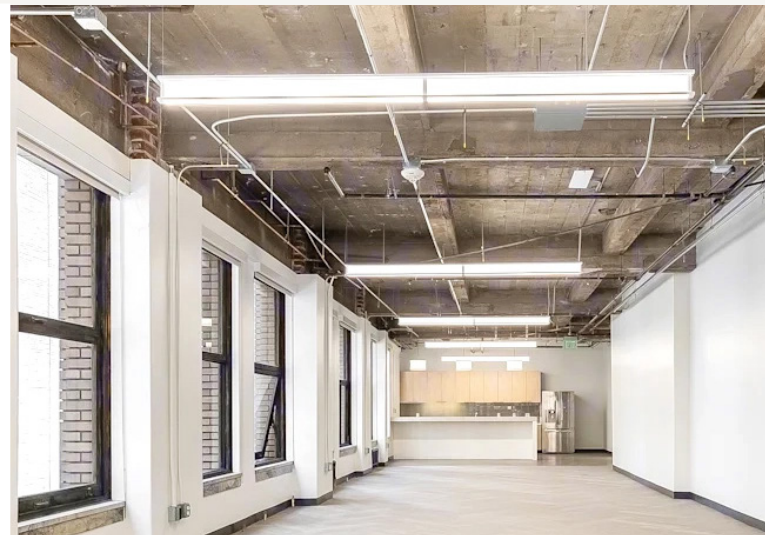
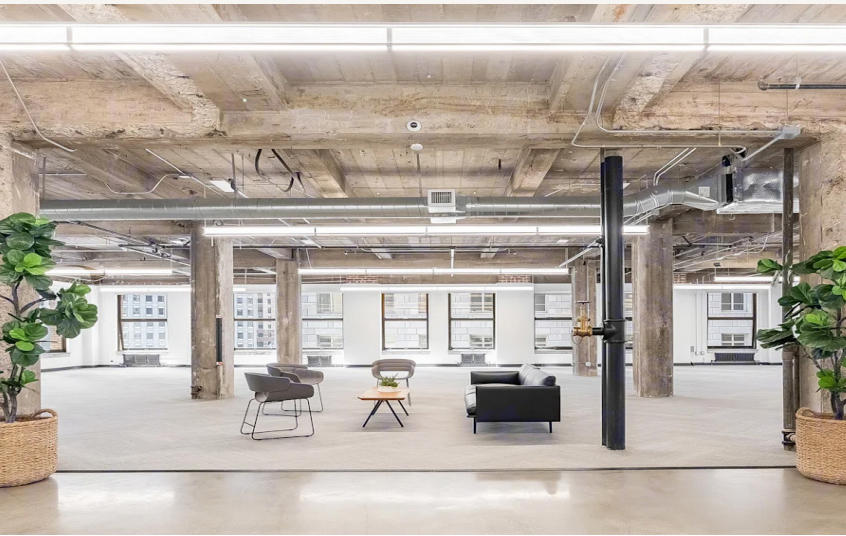
- Available Now
- Fully furnished creative floor
- 3 private offices
- 4 conference rooms
- Kitchen/break area
- Exposed ceiling
- IT room
- Storage room
- 66 workstations

# Suite 600

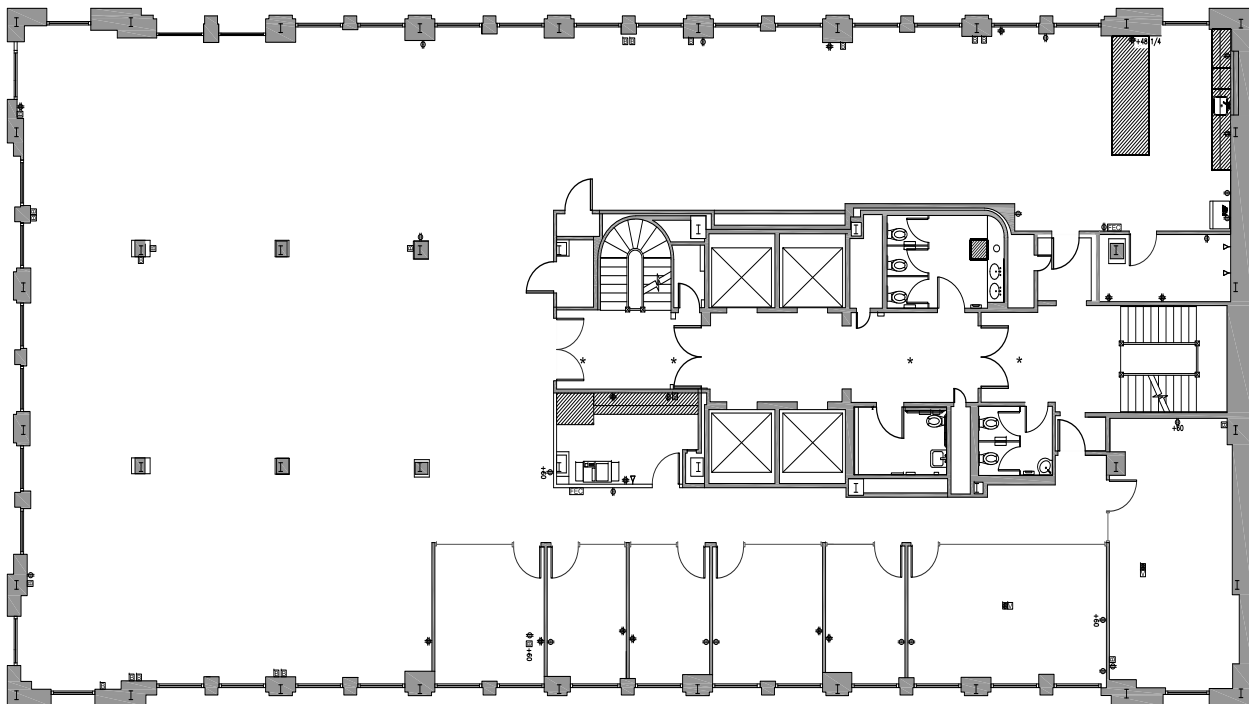
9,351 RSF

- Available August 1, 2026
- Creative space with exposed ceiling
- 2 large conference rooms
- 2 medium conference rooms
- 3 huddle rooms
- Kitchen
- IT room
- Open area: room for 60+ desks

115  
SANSOME



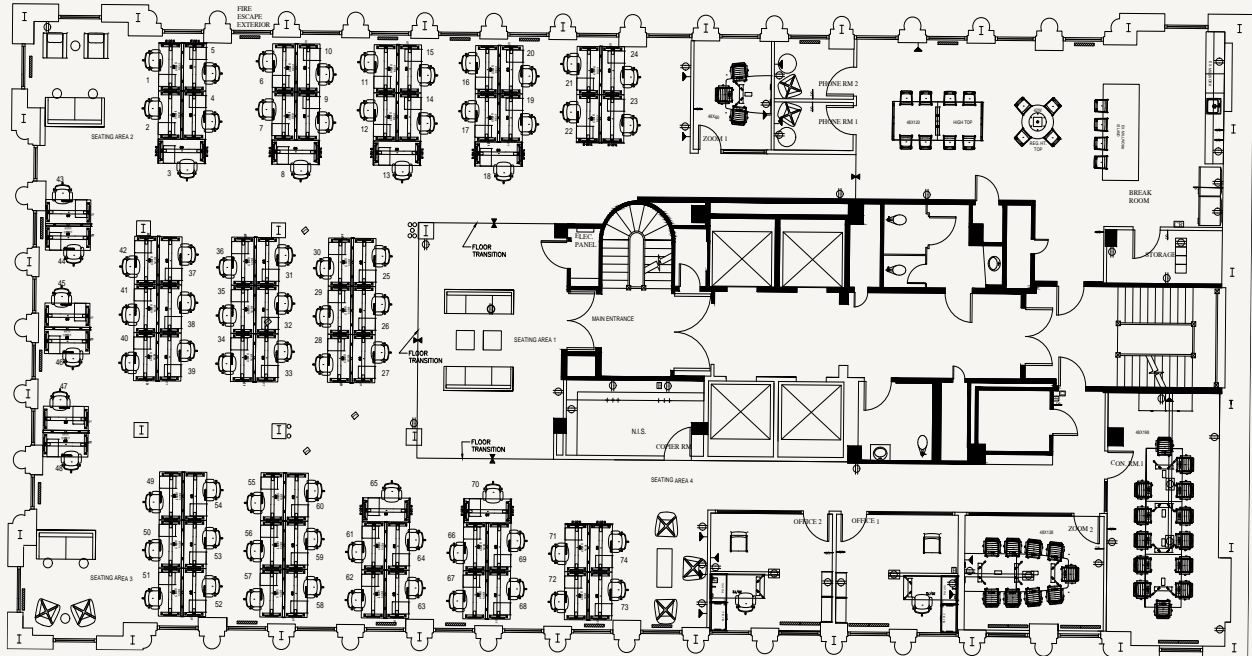
High end furnishings with collaborative and flexible layouts



# Suite 900

8,973 RSF

115  
SANSOME



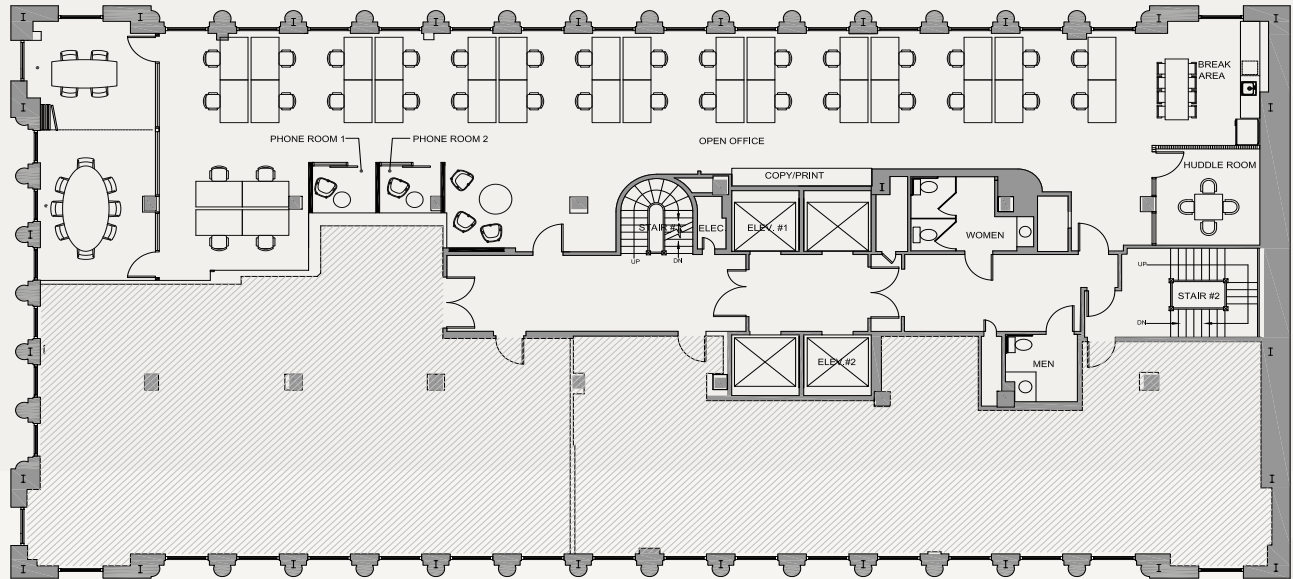
High end furnishings with collaborative and flexible layouts

- Available August 1, 2026
- Fully furnished creative floor
- 2 private offices
- 2 large conference rooms
- 1 small conference room
- Large kitchen & Break area
- Reception area
- IT/copy/storage room
- 54 workstations

# Suite 1002

4,500 RSF

115  
SANSOME



**High end furnishings** with collaborative and flexible layouts

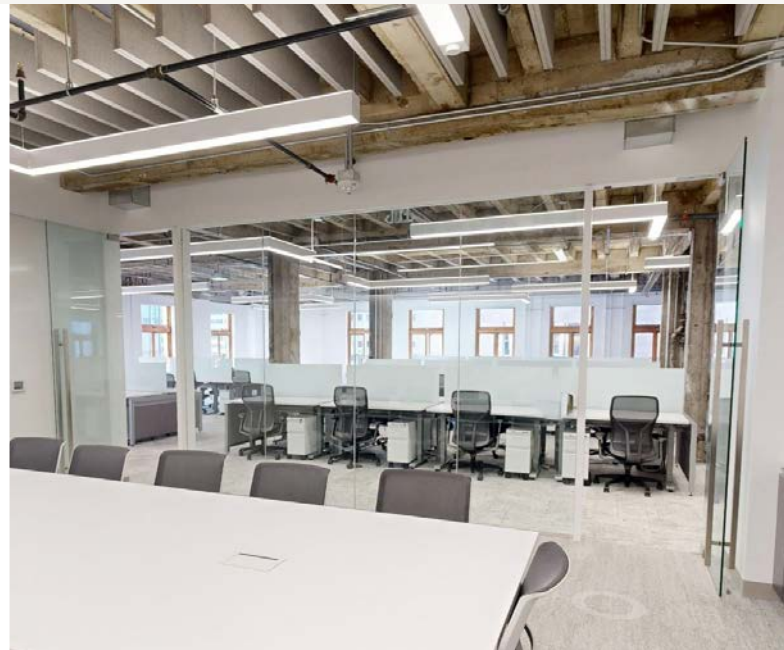
- Available June 1, 2026
- Fully furnished creative floor
- Open area: room for 34 desks
- 1 large conference room
- 2 medium conference rooms
- 2 phone rooms
- Kitchen / break area

# Suite 1100

9,731 RSF

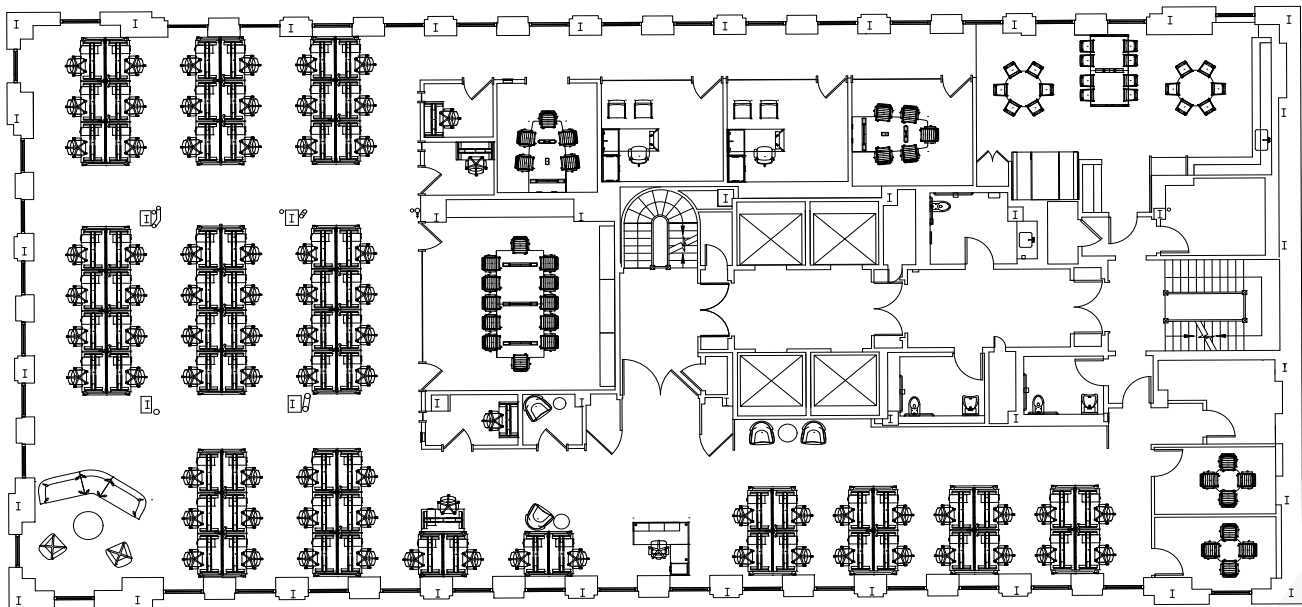
- Available now
- Recently Completed Plug & Play Spec Suite
- Fully furnished creative floor
- Large all hands/break area
- 2 private offices
- 1 large conference room
- 2 medium conference rooms
- 2 small meeting rooms
- 4 phone rooms
- 75 workstations

115  
SANSOME



High end furnishings with collaborative and flexible layouts

VIRTUAL TOUR



# 115

SANSOME



**CONTACTS:**

**WES POWELL**

+1 415 395 4901

wes.powell@jll.com

RE License #1702003

**CHRIS HOLLAND**

+1 415 354 6917

chris.holland@jll.com

RE License #01474598



Jones Lang Lasalle Brokerage, Inc.  
Real estate License #: 01856260