




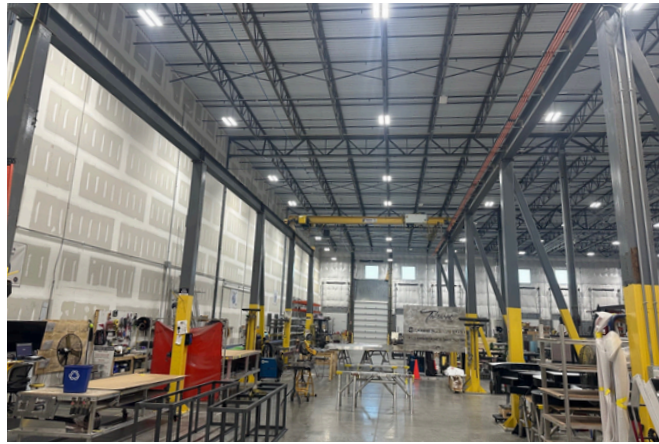
For Lease

12075 Harley Club Drive, Ashland, VA 23005

 **JLL** SEE A BRIGHTER WAY

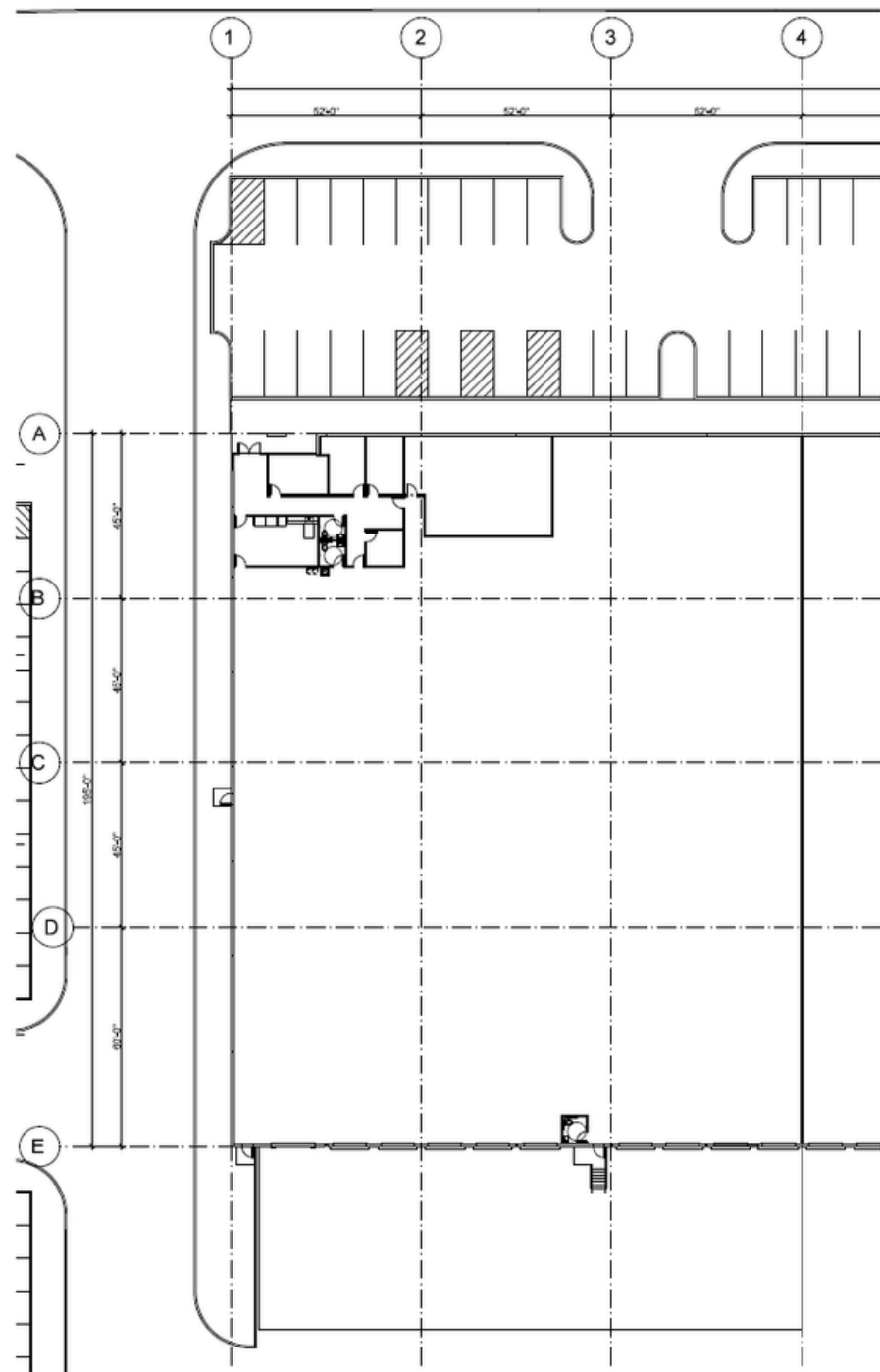
Northlake II | Building B

- New Class A Construction
- Available Space: 30,458 SF endcap
- Clear Height: 32' clear
- Loading: 9 docks and 1 drive-in
- 45x52 column spacing with 60' speed bay
- Zoning: M-2C zoning
- Sprinkler: ESFR
- Lighting: LED
- Outside Storage: On-site outside storage available
- Condition: Move-in ready





FLOOR PLAN



15
miles to
Downtown Richmond, VA

85
miles to
Port of Virginia

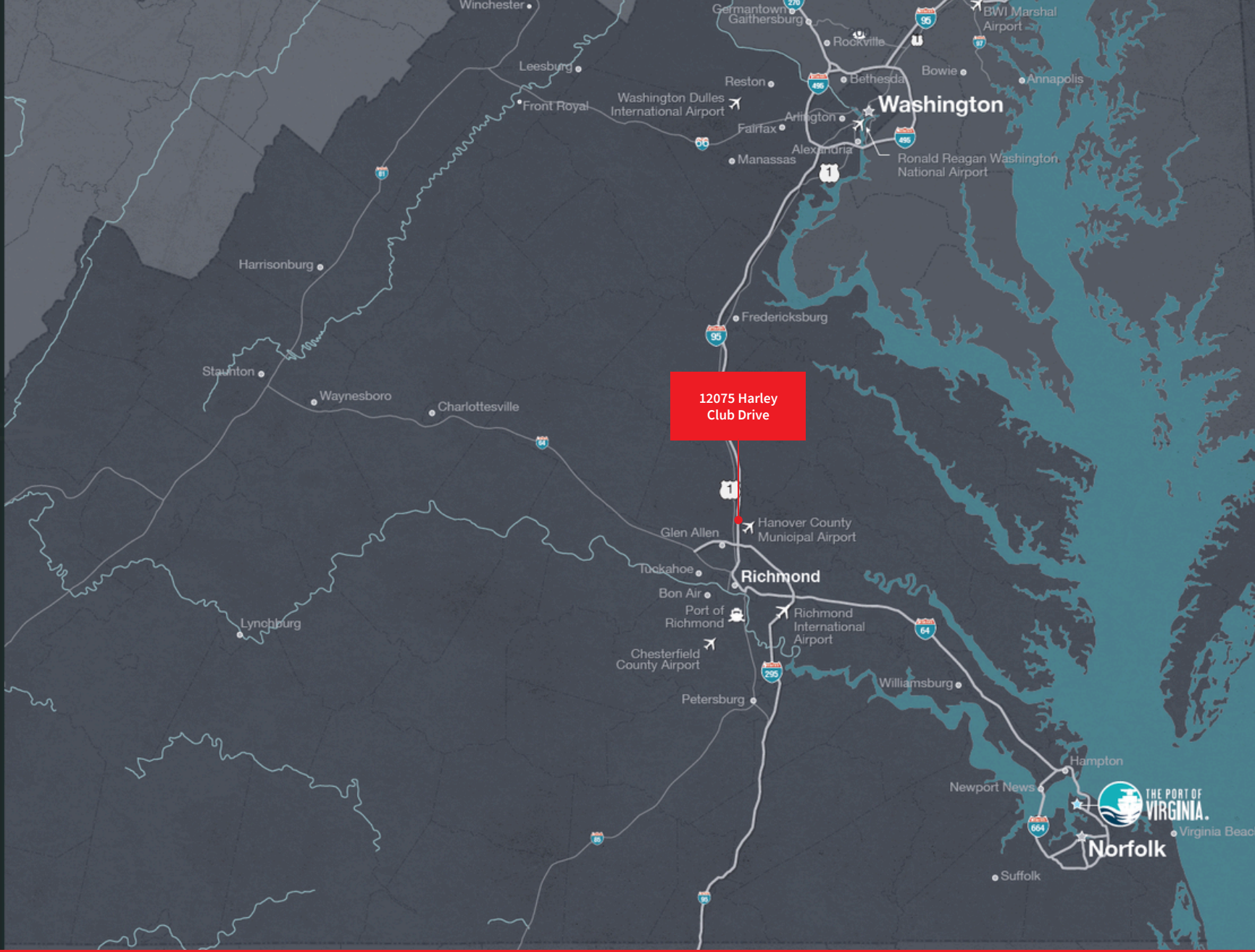
95
miles to
Washington, DC

103
miles to
Norfolk, VA

108
miles to Dulles
International Airport

166
miles to
Raleigh, NC

234
miles to
Philadelphia, PA



Gareth Jones

gareth.jones@jll.com
+1 (804) 200 6453

Charles Polk, III, SIOR

charlie.polk@jll.com
+1 (804) 200 6419

Chris Avellana

chris.avellana@jll.com
+1 (804) 852 0773

jll.com

Jones Lang LaSalle Americas, Inc.