



For Lease

Office/Warehouse Condo

2443 Ellwood Drive SW | Edmonton, AB

±1,978 SF with grade loading

- Functional space with mezzanine
- Prime South Edmonton Location
- Ample Parking & Prominent Signage

For more information contact:

Mackenzie York

Associate Vice President

780 920 8463

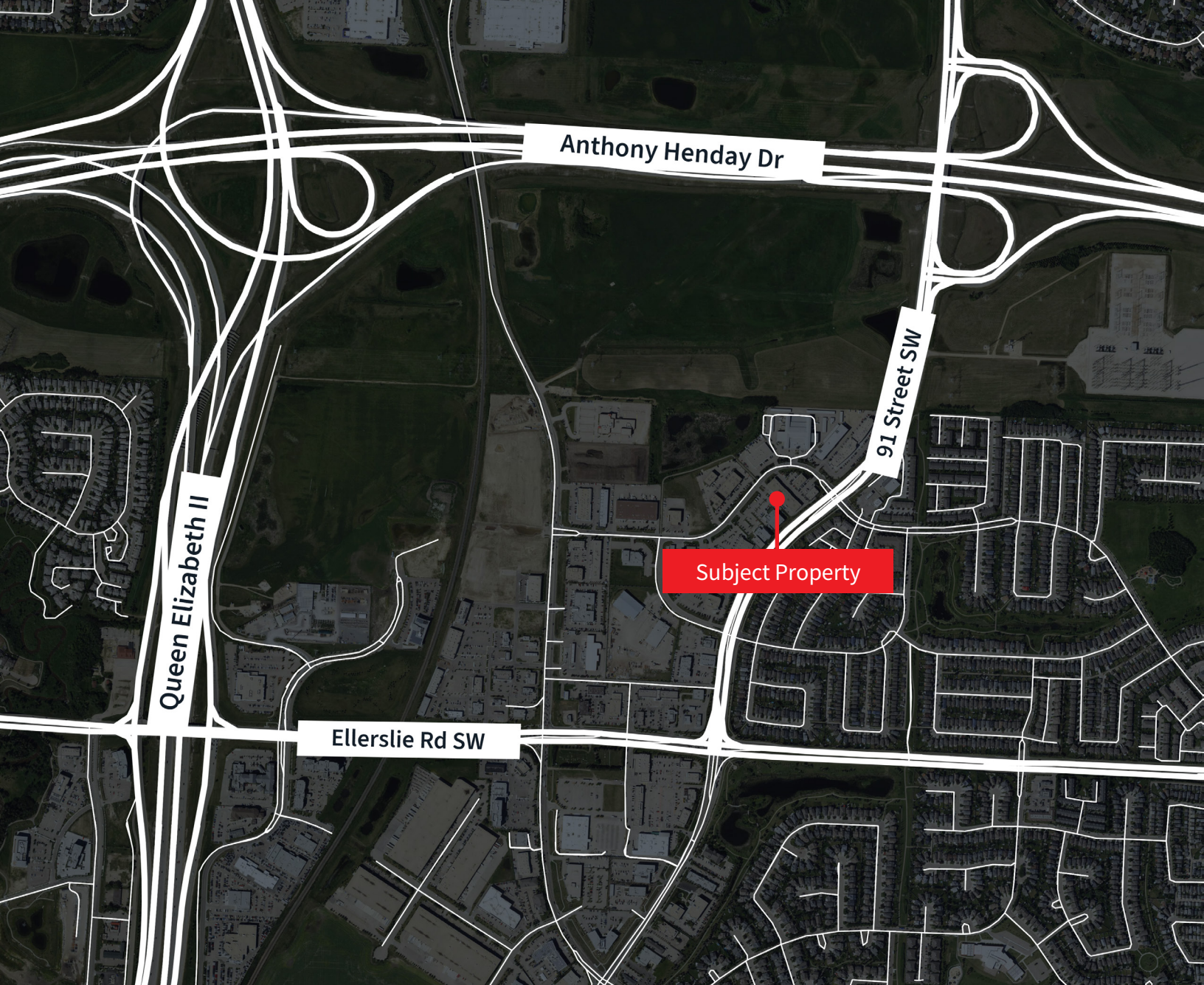
Mackenzie.York@jll.com




Property Details

Municipal Address	2443 Ellwood Drive SW, Edmonton
Zoning	EIB - Ellerslie Industrial Business Zone
Available Area	1,978 SF
Year Built	2007
Construction	Reinforced concrete
Column Grid	TBD
Building Depth	TBD
Power	100 Amp (TBC)
Ceiling Height	22'

Heating	RTU office / OH Heater warehouse
Lighting	T5/LED
Sprinklered	No
Loading	(1) 12' x 16' Grade
Lease Rate (PSF)	Contact agent
Op. Costs (PSF)	Contact agent
Availability	December 1, 2026



 **JLL** SEE A BRIGHTER WAY

Darryl McGavigan
Executive Vice President
+1 780 328 0064
Darryl.McGavigan@jll.com

Adam Butler
Executive Vice President
+1 780 328 0065
Adam.Butler@jll.com

Bronwyn Scrivens
Vice President, SIOR
+1 780 807 4564
Bronwyn.Scrivens@jll.com

Kent Simpson
Vice President
+1 780 203 0425
Kent.Simpson@jll.com

Mackenzie York
Associate Vice President
+1 780 920 8463
Mackenzie.York@jll.com

Rory Wutzke
Associate (*unlicensed*)
+1 780 328 2578
Rory.Wutzke@jll.com

Kailee Campbell
Senior Transaction Analyst
+1 780 328 0069
Kailee.Campbell@jll.com

Leonardo Triana
Senior Marketing Associate
+1 587 412 1755
Leonardo.Triana@jll.com

JLL Edmonton Industrial | National Bank Centre - 3560, 10180 101 Street NW, Edmonton, AB

DISCLAIMER: ©2026 Jones Lang LaSalle IP, Inc. All rights reserved. All information contained herein is from sources deemed reliable; however, no representation or warranty is made to the accuracy thereof. The Property may be withdrawn without notice. Neither Owner nor JLL accepts any liability for any loss or damage suffered by any party resulting from reliance on this information. Jones Lang LaSalle Real Estate Services, Inc.