



 **JLL** SEE A BRIGHTER WAY

For lease

Commerce Park West
Industrial/Flex Buildings

3380-3480 Industrial Blvd
West Sacramento, CA 95691

Available Suites:

3380 Industrial Blvd
Suites 103 & 104-105

3410 Industrial Blvd
Suite 102

3450 Industrial Blvd
Suite 102

Professionally owned and managed by:



Property highlights

- Freeway fronting business park
- 5 Minutes to Downtown Sacramento
- Enterprise zone
- Class A business park
- Business friendly City of West Sacramento
- Zoned: BP
- 3.5:1,000 SF parking
- Building signage available
- Grade level loading
- Electric & gas service: PG&E

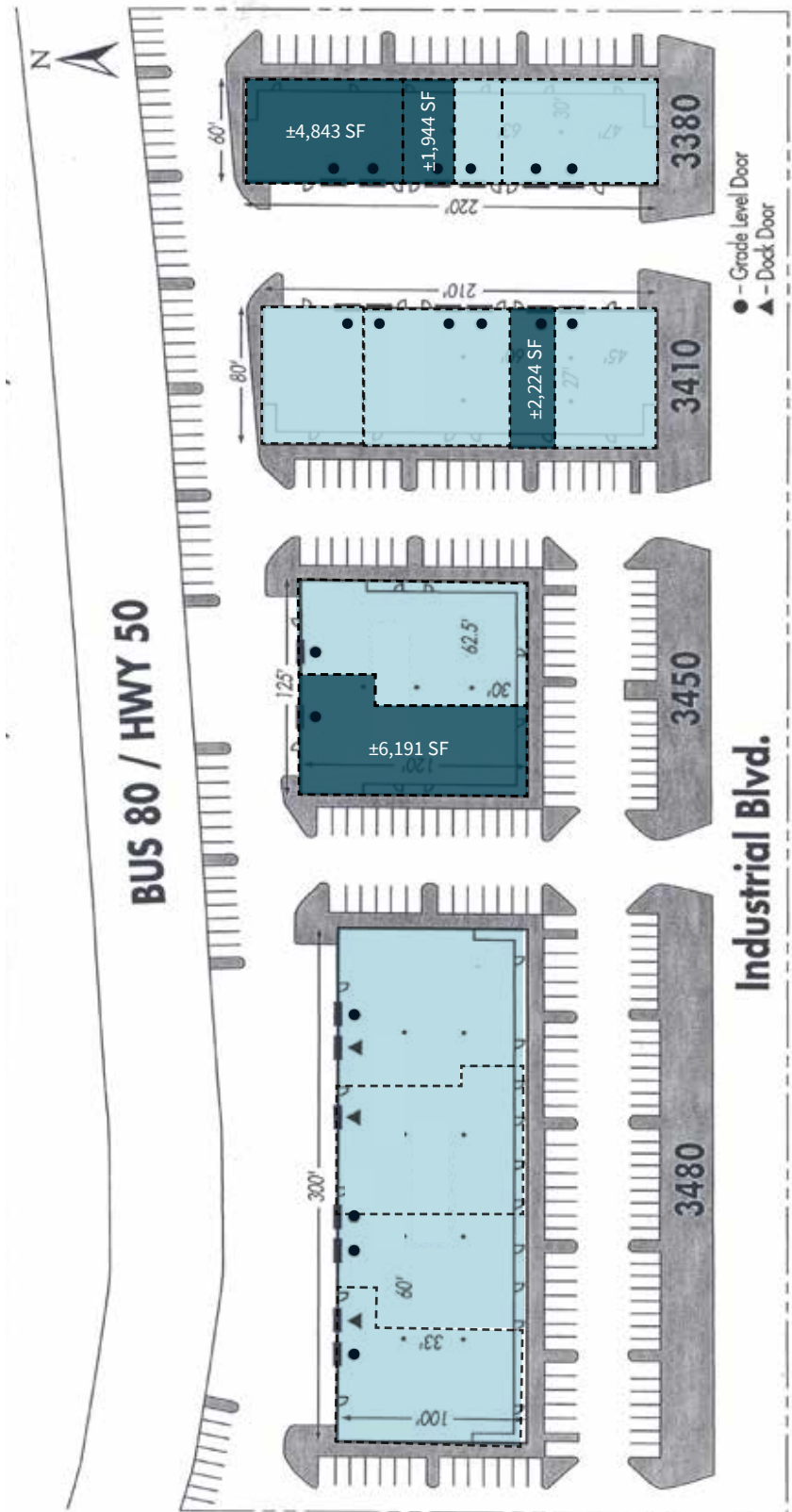


Available Suites

3380 Industrial Blvd	3410 Industrial Blvd	3450 Industrial Blvd	3480 Industrial Blvd
<p>Suites 103: ±1,944 SF office w/warehouse available 9/1/2026</p> <p>Suites 104-105: ±4,843 SF office w/warehouse available now</p>	<p>Suite 102: ±2,224 SF office & small warehouse available now</p>	<p>Suite 102: ±6,191 SF office/showroom/ warehouse available 11/1/2026</p>	<p>Fully leased</p>

Site plan

- Available
- Leased



SITE PLAN NOT TO SCALE.
ALL MEASUREMENTS ARE APPROXIMATE.

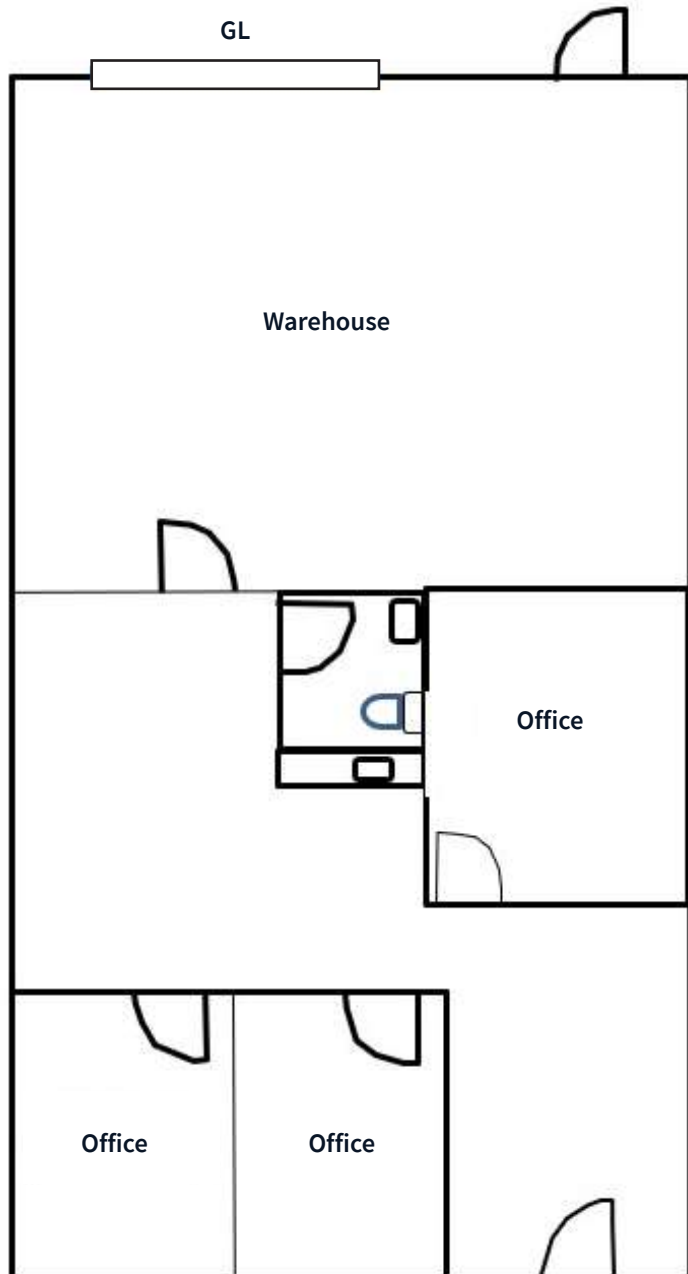
Floor plan

3380 Industrial Blvd

Suite 103
±1,944 SF
office w/warehouse

\$0.90 PSF + NNN

Available September 1, 2026



GL = Grade-level door

FLOOR PLAN NOT TO SCALE.
ALL MEASUREMENTS ARE APPROXIMATE.

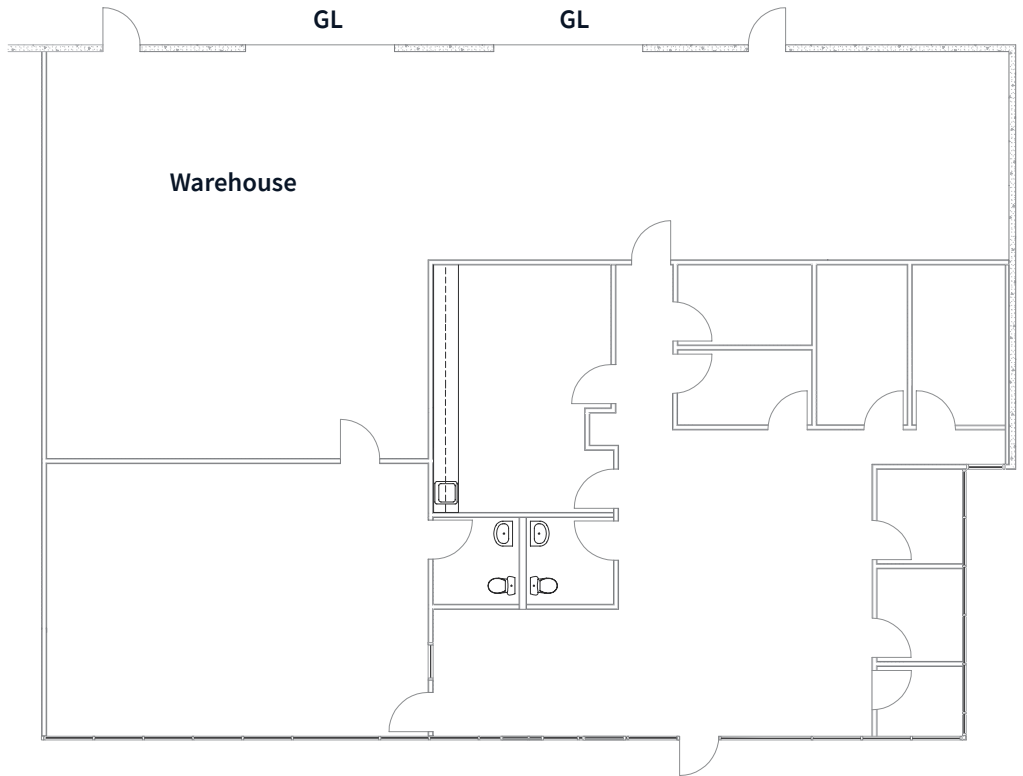
Floor plan

3380 Industrial Blvd

Suites 104-105
±4,843 SF
office w/warehouse

\$0.75 PSF + NNN

Available now



GL = Grade-level door



*FLOOR PLAN NOT TO SCALE.
ALL MEASUREMENTS ARE APPROXIMATE.*

Floor plan

3410 Industrial Blvd

Suite 102

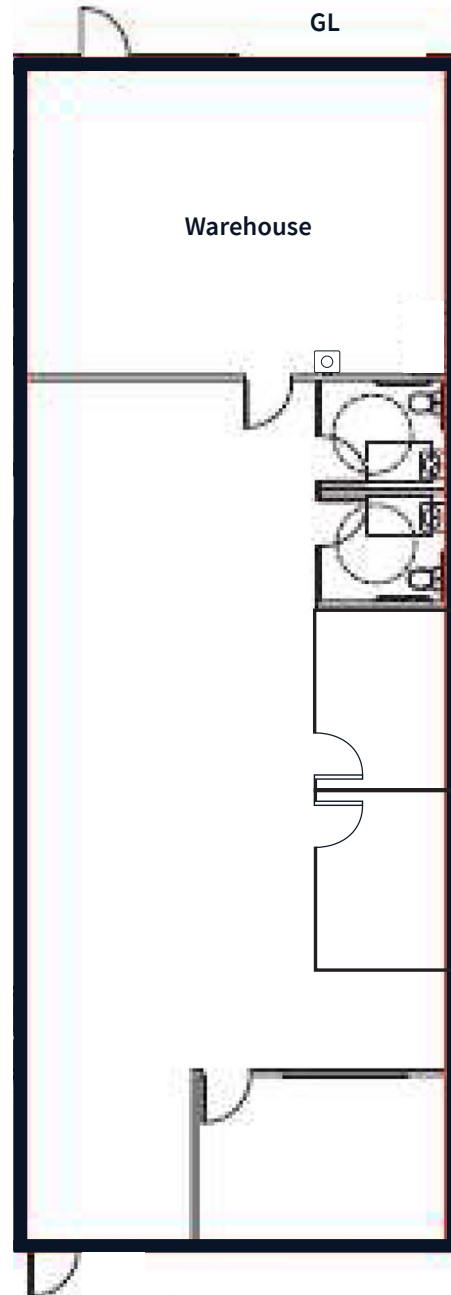
±2,224 SF

office & small warehouse

one (1) ±12' x ±14' grade-level door

\$0.90 PSF + NNN

Available now



GL = Grade-level door

*FLOOR PLAN NOT TO SCALE.
ALL MEASUREMENTS ARE APPROXIMATE.*

Floor plan

3450 Industrial Blvd

Suite 102

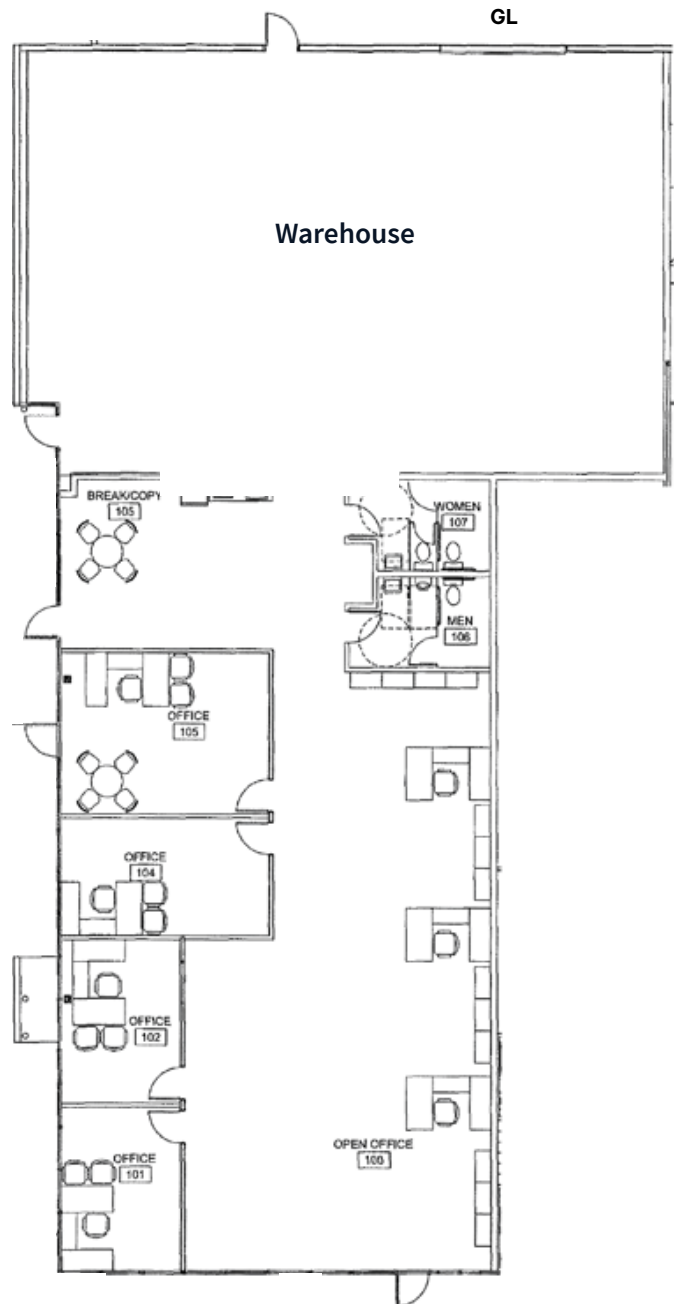
±6,191 SF

office/showroom & warehouse

one (1) ±12' x ±14' grade-level door

\$0.80 PSF + NNN

Available November 1, 2026



GL = Grade-level door

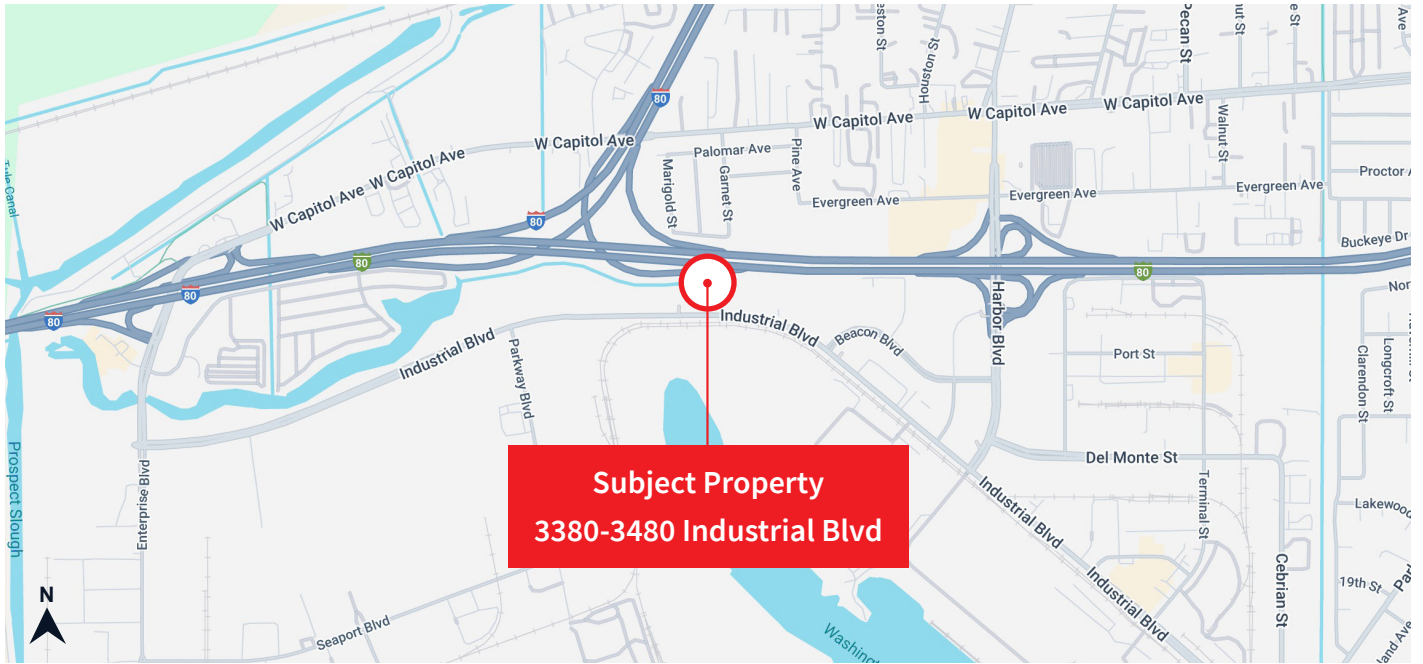
FLOOR PLAN NOT TO SCALE.
ALL MEASUREMENTS ARE APPROXIMATE.

Photos 3380 Industrial Ave Suites 104-105

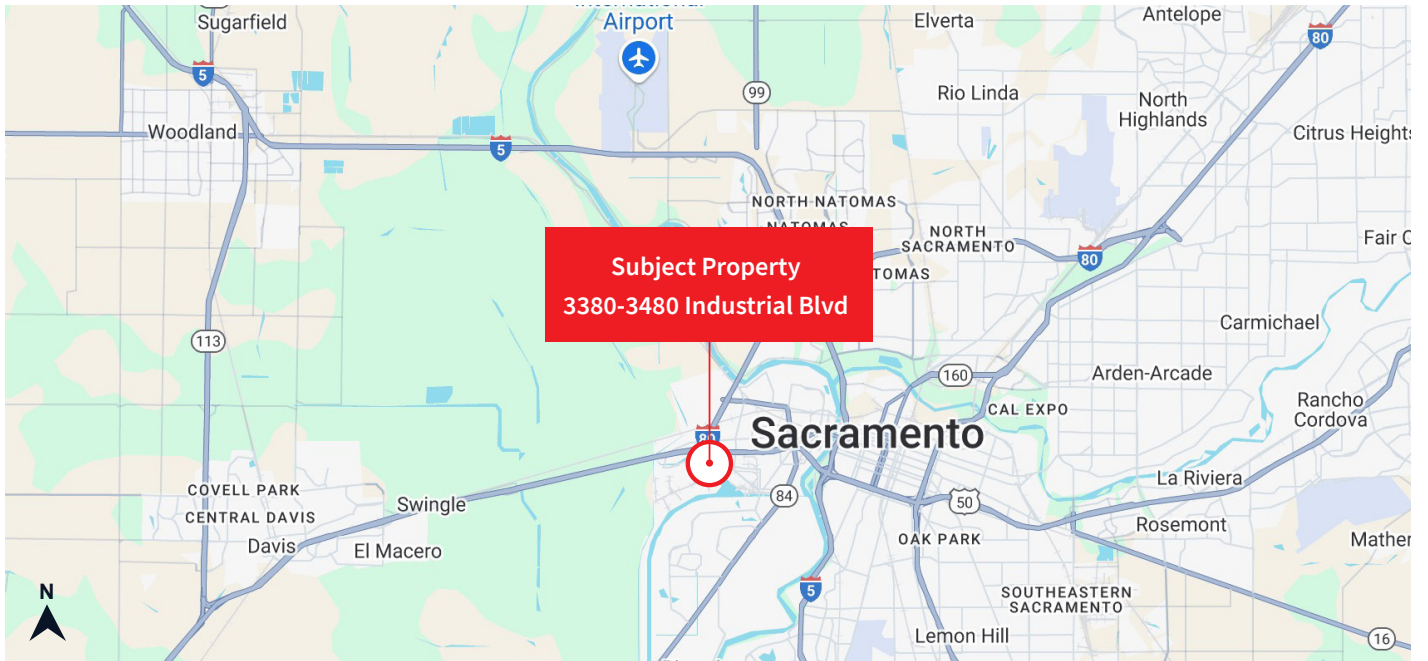


Location maps

Street map



Regional map



MAPS NOT TO SCALE

For lease

Commerce Park West
Industrial/Flex Buildings

3380-3480 Industrial Blvd
West Sacramento, CA 95691

JLL Sacramento Industrial Team

Dominic Smith

Vice President

Dominic.Smith@jll.com

+1 916 995 9396

RE Lic. 02106714

RJ Jimenez

Senior Associate

RJ.Jimenez@jll.com

+1 940 597 9341

RE Lic. 02248675

Mike Luca, SIOR

Senior Managing Director

Mike.Luca@jll.com

+1 916 214 0466

RE Lic. 01447904

Jones Lang LaSalle

Brokerage, Inc.

CA Real Estate License #01856260