

# Floor plan

## 3450 Industrial Blvd

Suite 102

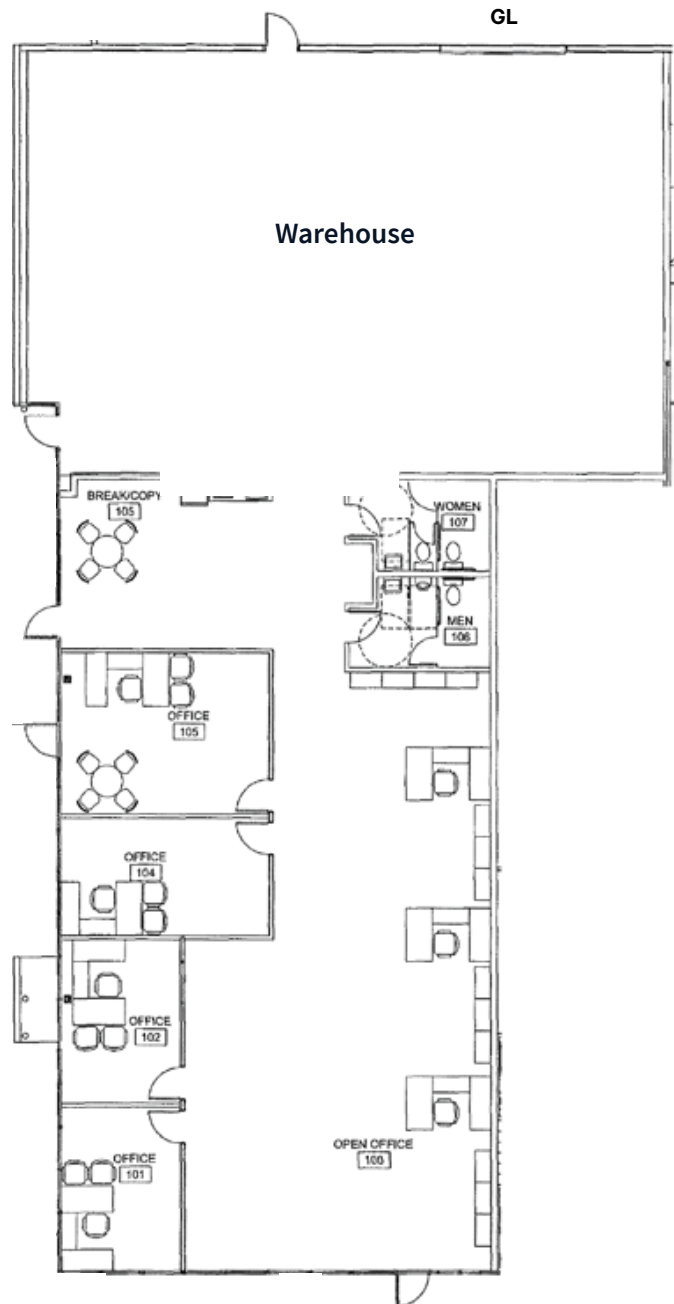
±6,191 SF

office/showroom & warehouse

one (1) ±12' x ±14' grade-level door

\$0.80 PSF + NNN

Available November 1, 2026



GL = Grade-level door

FLOOR PLAN NOT TO SCALE.  
ALL MEASUREMENTS ARE APPROXIMATE.