

455 KING STREET WEST



SUITE DETAILS

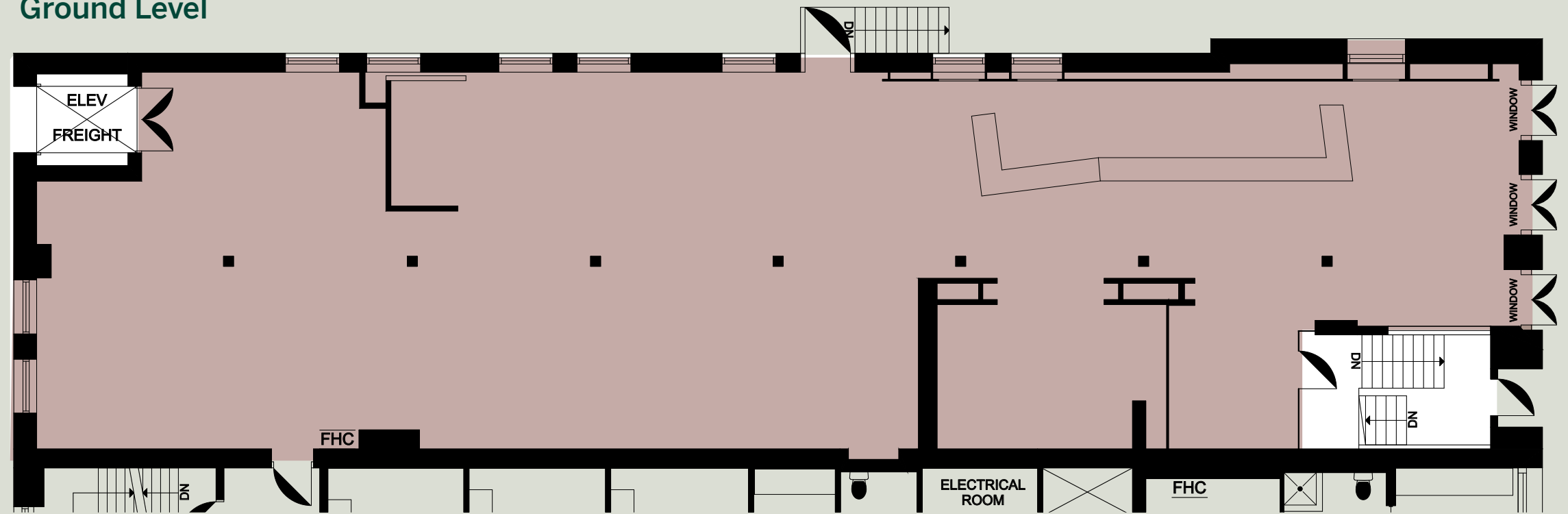
FLOOR	Ground Level - 3,516 SF Lower Level - 3,551 SF
SUITE	B01
TOTAL	7,067 SF
NET RENT	Call Listing Agent
ADDITIONAL RENT	\$18.86 PSF (Est. 2026)
AVAILABILITY	Immediately

- Signature full service restaurant offering on prime King Street West
- Large format patio space located on the laneway
- Corner premises features fantastic branding and exposure
- Pre-fixed kitchen infrastructure in place

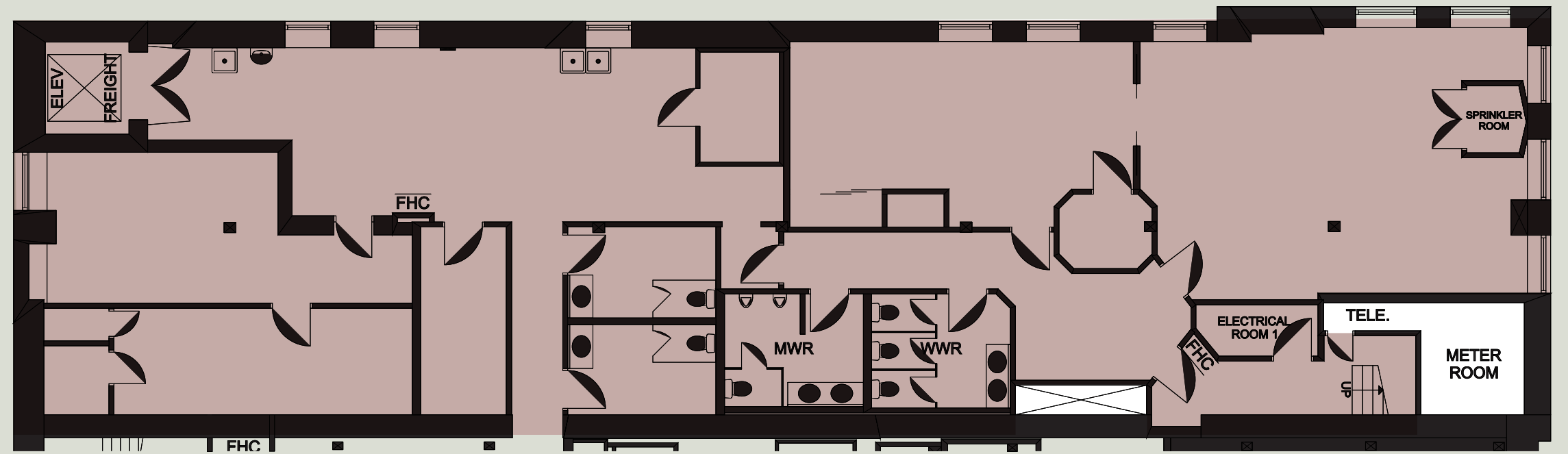


Laneway

Ground Level



Lower Level



King Street West

Available Suite

