

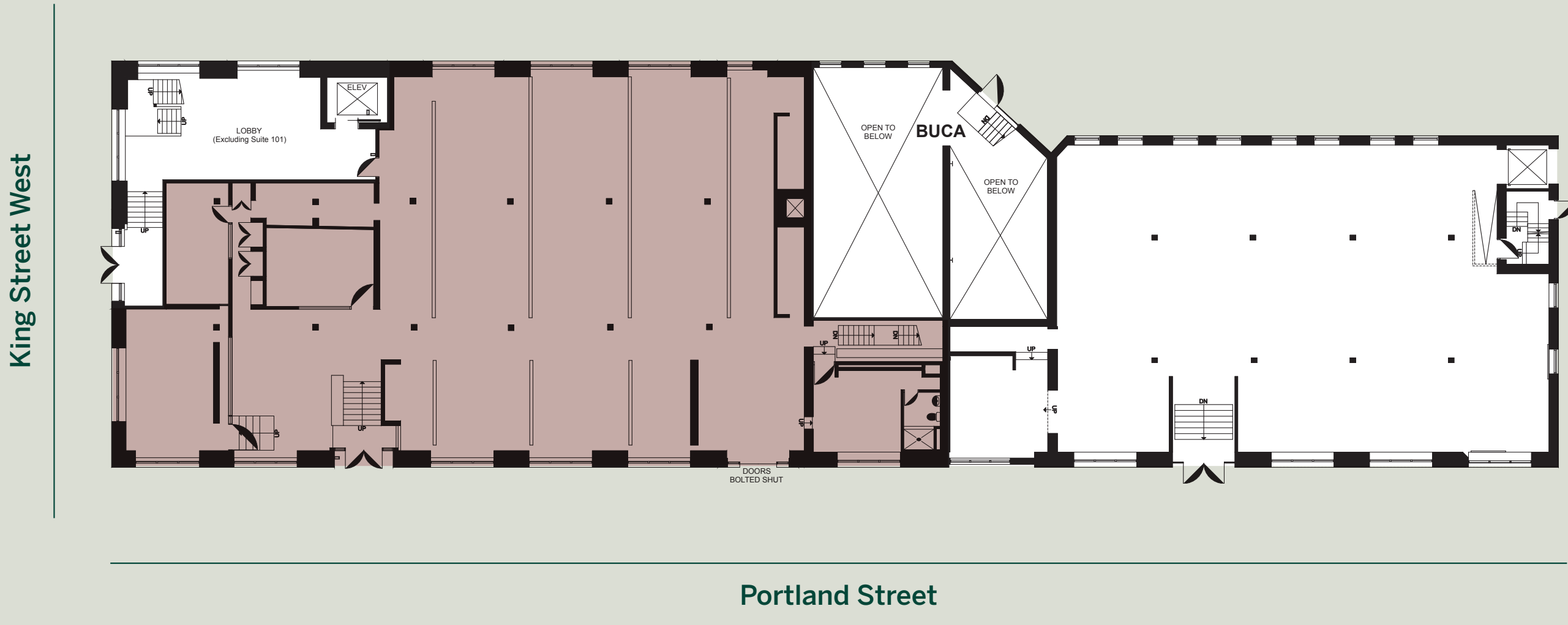
602-604 KING STREET WEST



SUITE DETAILS

SUITE	100
SIZE	6,789 SF
NET RENT	Call Listing Agent
ADDITIONAL RENT	\$24.95 PSF (Est. 2026)
AVAILABILITY	Immediately

- Walk-up premises with dedicated entrance off of Portland Street
- Clean retail unit featuring brick-and-beam character
- Corner exposure and branding on King Street West and Portland Street
- Ideal for clean retail uses including fashion, health and wellness and professional services



 Available Suite



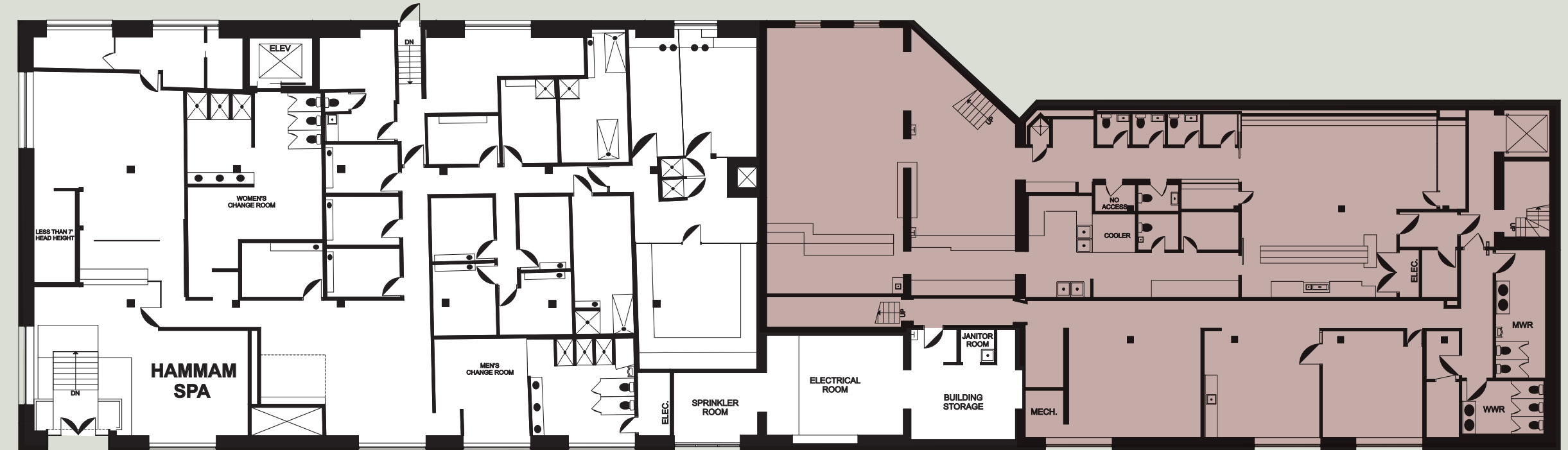
SUITE DETAILS

FLOOR	Lower Level
SUITE	B100
SIZE	5,758 SF
NET RENT	Call Listing Agent
ADDITIONAL RENT	\$24.95 PSF (Est. 2026)
AVAILABILITY	Immediately

- Prominent laneway full service restaurant opportunity (formerly BUCA)
- Signature entrance vestibule featuring 20 FT ceiling heights
- Pre-fixed restaurant premises
- Laneway patio space available



King Street West



Portland Street

 Available Suite

