

# 620 KING STREET WEST



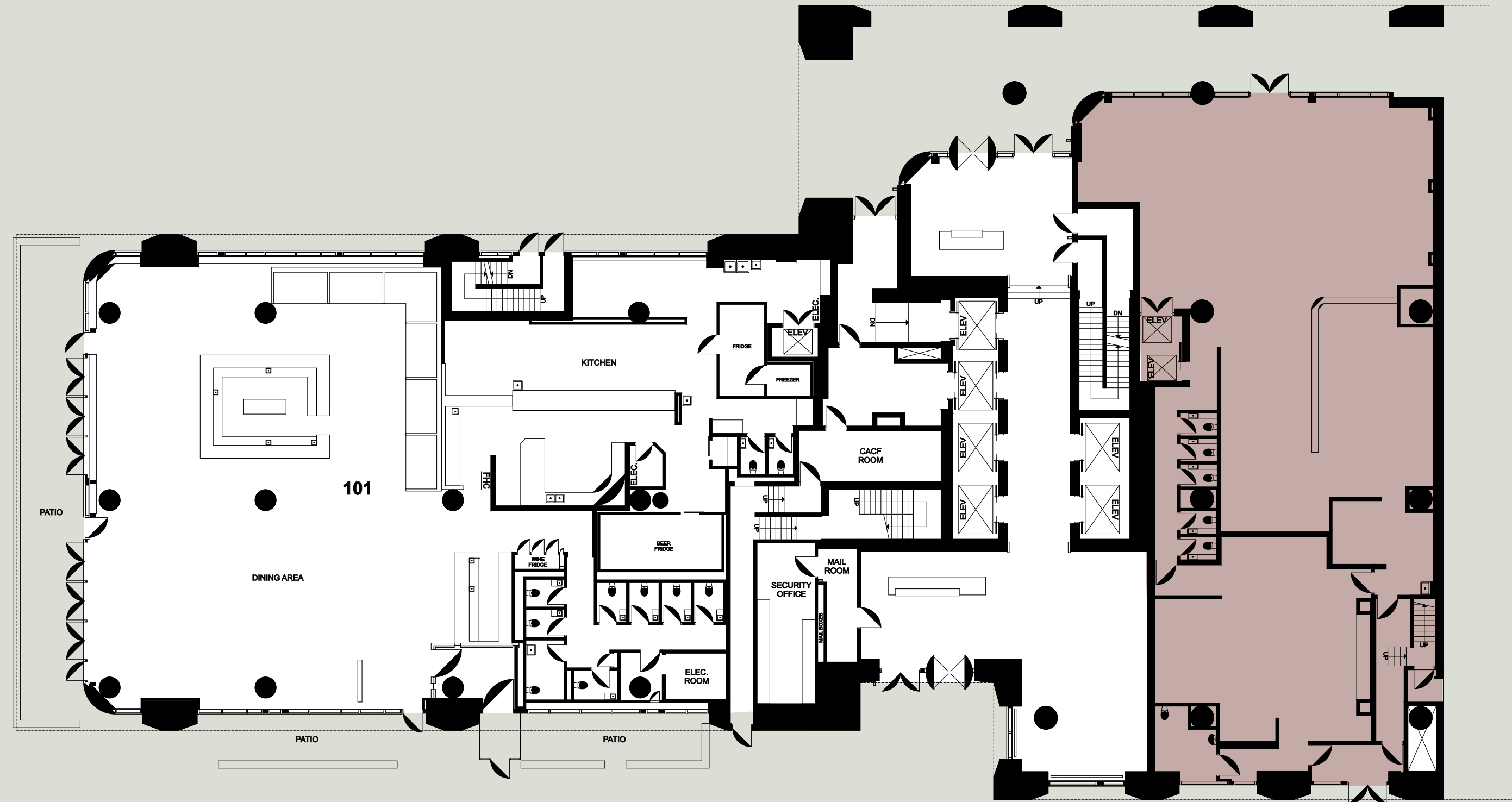
# SUITE DETAILS

<b>FLOOR</b>	Ground Level - 5,443 SF Mezzanine - 4,202 SF
<b>SUITE</b>	103
<b>SIZE</b>	9,645 SF
<b>NET RENT</b>	Call Listing Agent
<b>ADDITIONAL RENT</b>	\$25.85 PSF (Est. 2026)
<b>AVAILABILITY</b>	Immediately

- Rare large-format retail premises located at the base of King Portland Centre
- High-end pre-fixed restaurant improvements throughout the premises (formerly Dasha)
- Unit features custom mezzanine level and secret rear bar area
- Strong co-tenancy located adjacent King Taps



King Street West



 Available Suite

