

# RETAIL FOR LEASE

575

ELDORADO,  
BROOMFIELD



13,750 SF AVAILABLE

**LORENZO HARRIS**

+1 720 431 9122  
lorenzo.harris@jll.com

**STEPHEN MARKEY**

+1 720 635 7139  
stephen.markey@jll.com



# PROPERTY HIGHLIGHTS



**13,750 SF**

Former Daycare  
Space Available



**Superior Connectivity**

Easy access from Highway 36  
and Interlocken Loop.



**Prime Location**

Direct access to  
Flatiron Crossing Mall with  
immediate visibility to  
high-traffic retail activity.

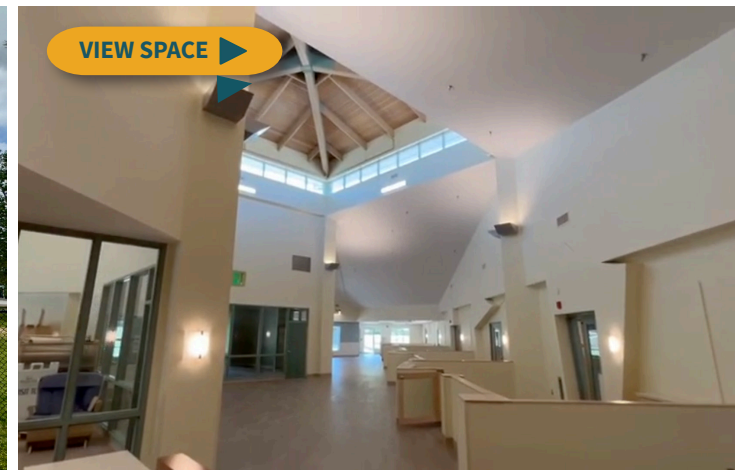


**PUD  
Zoning**



**Dense Residential Base**

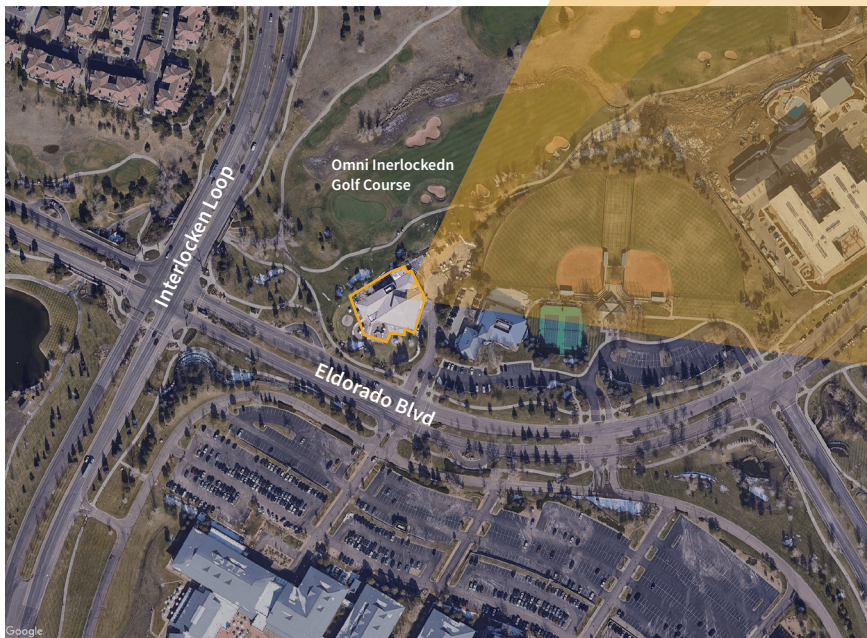
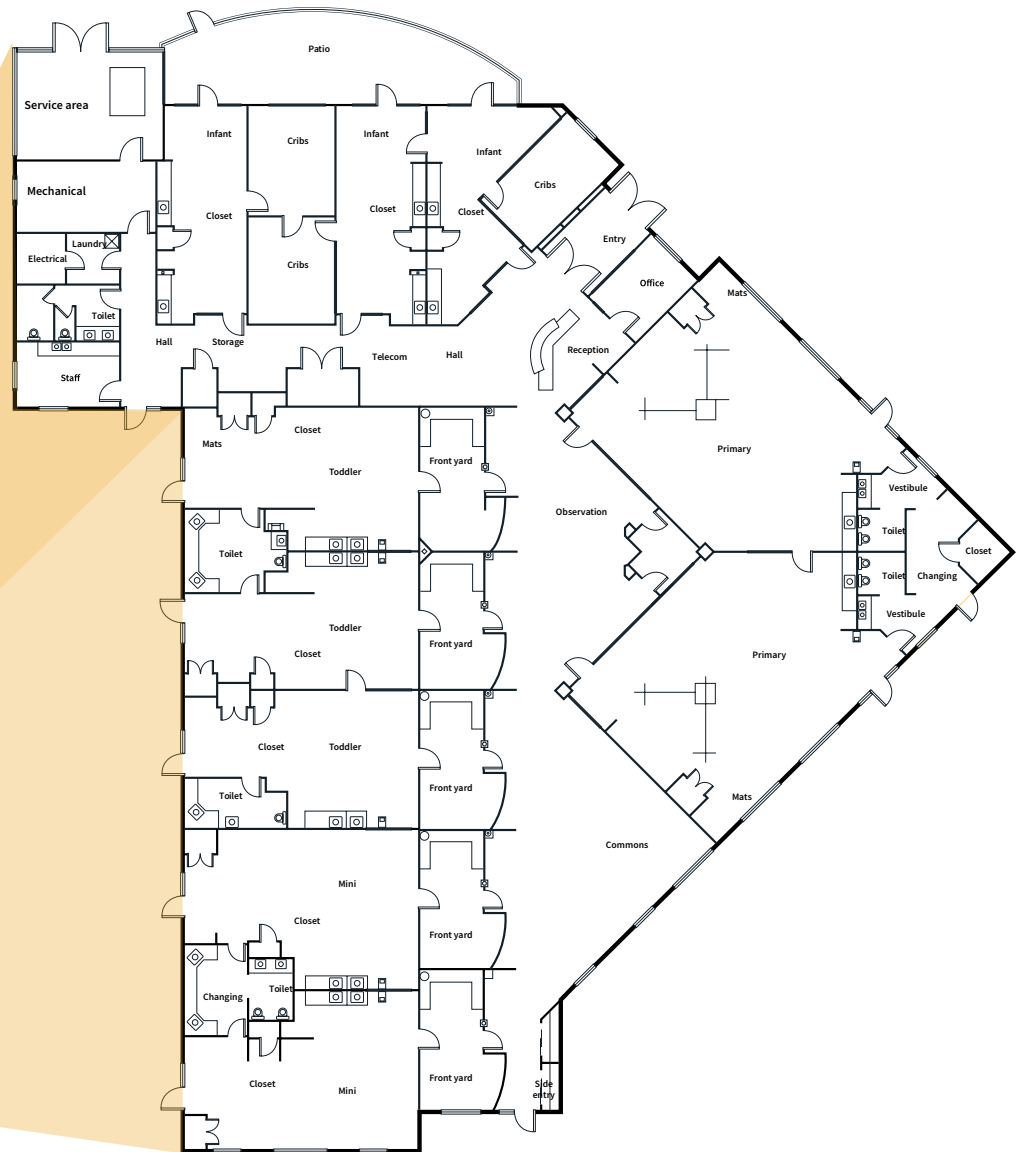
Thousands of multifamily  
units with additional 800+  
units under construction.



[VIEW SPACE](#)

# FLOORPLAN

±13,750 SF





FLATIRON CROSSING

Dillard's ★ Macy's

DICK'S Crate&Barrel

The Container Store®

WEST FLATIRON CROSSING | 12,880 VPD

Walgreens

Firestone

CHIPOTLE

LIFETIME

BIG TIRES

CIRCLE K

Walmart

MARRIOTT BOULDER

CAMPDEN INTERLOCKEN  
340 UNITS

WELLS FARGO

POPEYES

RENAISSANCE  
BOULDER FLATIRON HOTEL

BENIHANA

crocs™

ORACLE

BUCKY MCOWAN'S

485 INTERLOCKEN  
268 UNITS

THE LOCK AT  
FLATIRONS  
261 UNITS

575  
ELDORADO,  
BROOMFIELD

OMNI INTERLOCKEN  
GOLF CLUB

OMNI  
HOTELS & RESORTS

DEMOGRAPHIC	1 MILE	2 MILES	3 MILES
POPULATION	3,994	49,216	144,074
HOUSEHOLDS	2,323	21,866	58,908
AVERAGE HOUSEHOLD INCOME	105,403	136,859	153,852

**CONTACT INFORMATION:**

**LORENZO HARRIS**

+1 720 431 9122  
lorenzo.harris@jll.com

**STEPHEN MARKEY**

+1 720 635 7139  
stephen.markey@jll.com

Although information has been obtained from sources deemed reliable, neither Owner nor JLL makes any guarantees, warranties or representations, express or implied, as to the completeness or accuracy as to the information contained herein. Any projections, opinions, assumptions or estimates used are for example only. There may be differences between projected and actual results, and those differences may be material. The Property may be withdrawn without notice. Neither Owner nor JLL accepts any liability for any loss or damage suffered by any party resulting from reliance on this information. If the recipient of this information has signed a confidentiality agreement regarding this matter, this information is subject to the terms of that agreement. ©2026. Jones Lang LaSalle IP, Inc. All rights reserved.

