


# FOR SALE

±9,910 SF Warehouse

6035 S Adams St, Tacoma, WA

 **JLL** SEE A BRIGHTER WAY

Asking price \$2,475,000



**Alec Goodwin**

Associate Broker

[Alec.Goodwin@jll.com](mailto:Alec.Goodwin@jll.com)

(424) 421-9245

**Bill Honsaker**

Sr. Managing Director

[Bill.Honsaker@jll.com](mailto:Bill.Honsaker@jll.com)

(602) 369-6797

[jll.com](http://jll.com)

Jones Lang LaSalle Brokerage, Inc.

# Aerial View

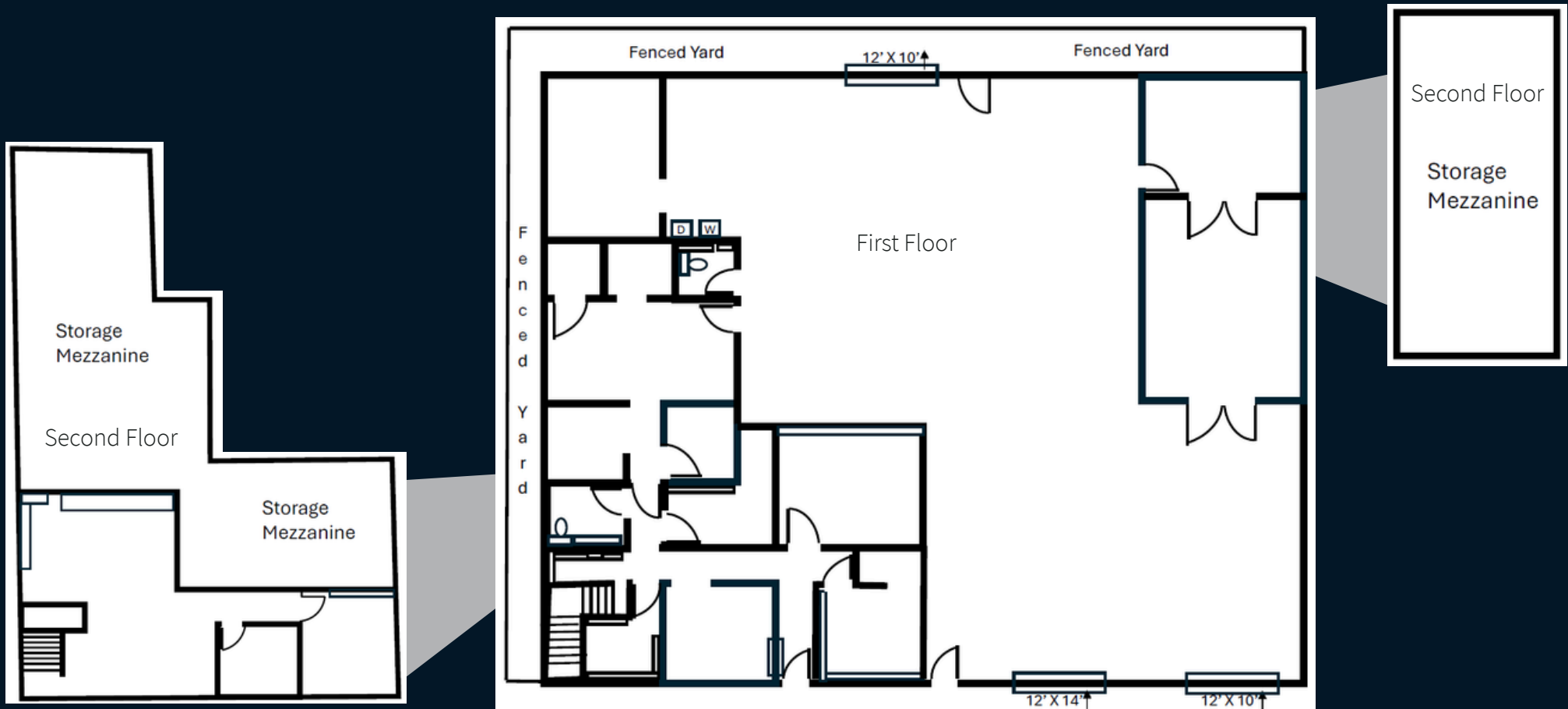


## Property Specifications

- ±9,910 total SF available
- ±3,590 SF Warehouse
- ±3,344 SF Office (2 story)
- ±773 SF Storage
- ±2,203 SF Mezzanine storage
- ±21,358 SF of Land
- ±18' clear height
- 3 Grade-level doors
  - (1) 12'W x 14'H
  - (2) 12'W x 10'H
- ±1,500 SF Rear paved yard area

# Floor Plans

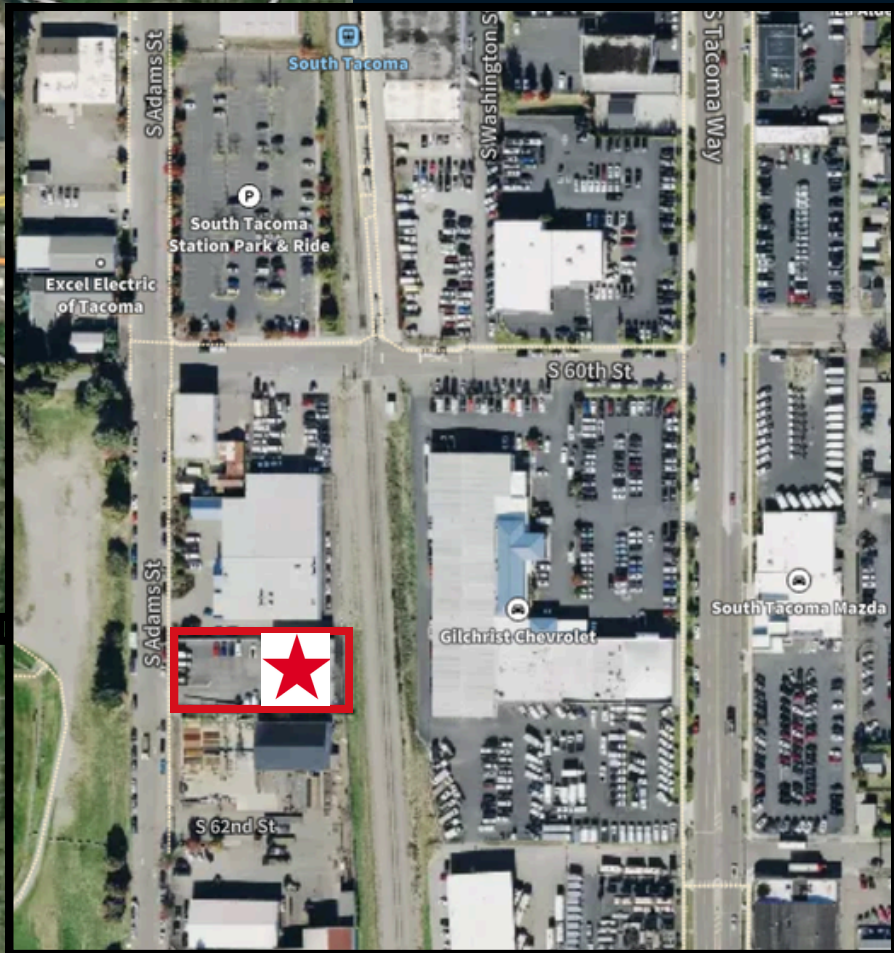
- ±3,590 SF Warehouse
- ±3,344 SF Office (2 story)
- ±773 SF Storage
- ±2,203 SF Mezzanine storage



# Property Highlights

- Central location with easy access to I-5
- Zoned M2 - Heavy Industrial
- 5 minute walk to South Tacoma Rail Station
- 20 minute drive to Port of Tacoma
- Parcel Numbers:
  - 3270000030
  - 3270000020
  - 3270000050





**Alec Goodwin**  
Associate Broker  
Alec.Goodwin@jll.com  
(424) 421-9245

**Bill Honsaker**  
Sr. Managing Director  
Bill.Honsaker@jll.com  
(602) 369-6797