



brookhollow

For Lease



For more information, please contact:

Nick Barber, SIOR
Managing Director
NV Lic. #S.0058027
+1702 360 4927 (o)
nick.barber@am.jll.com

Travis Landes, SIOR
Executive Vice President
NV Lic. #S.177027.LLC
+1702 522 5122(o)
travis.landes@am.jll.com

Lilly Kossoff
Senior Associate
NV Lic. #S.195790
+1702 522 5107(o)
lillian.kossoff@am.jll.com



Jones Lang LaSalle Brokerage, Inc.
1980 Festival Plaza Drive
Suite 250
Las Vegas, Nevada
NV Lic. #B.1000836.CORP



For more information, please contact:

Nick Barber, SIOR
Managing Director
NV Lic. #S.0058027
+1702 360 4927 (o)
nick.barber@am.jll.com

Travis Landes, SIOR
Executive Vice President
NV Lic. #S.177027.LLC
+1702 522 5122(o)
travis.landes@am.jll.com

Lilly Kossoff
Senior Associate
NV Lic. #S.195790
+1702 522 5107(o)
lillian.kossoff@am.jll.com

Jones Lang LaSalle Brokerage, Inc., Real estate license #B.1000836.CORP

Property highlights

- Well-capitalized, institutional ownership with a reputation for making instant decisions
- Onsite property management and building engineers
- Unparalleled Southern Beltway “Curve” location and freeway visibility
- Corporate campus setting with immediate access to numerous amenities

Available



Building number	Suite number	Square footage	Notes
8329 (3)	210	6,417	Furnished space
8345 (7)	360	11,871	



For more information, please contact:

Nick Barber, SIOR
Managing Director
NV Lic. #S.0058027
+1702 360 4927 (o)
nick.barber@am.jll.com

Travis Landes, SIOR
Executive Vice President
NV Lic. #S.177027.LLC
+1702 522 5122(o)
travis.landes@am.jll.com

Lilly Kossoff
Senior Associate
NV Lic. #S.195790
+1702 522 5107(o)
lillian.kossoff@am.jll.com

Although information has been obtained from sources deemed reliable, JLL does not make any guarantees, warranties or representations, express or implied, as to the completeness or accuracy as to the information contained herein. Any projections, opinions, assumptions or estimates used are for example only. There may be differences between projected and actual results, and those differences may be material. JLL does not accept any liability for any loss or damage suffered by any party resulting from reliance on this information. If the recipient of this information has signed a confidentiality agreement with JLL regarding this matter, this information is subject to the terms of that agreement. ©2024. Jones Lang LaSalle IP, Inc. All rights reserved.

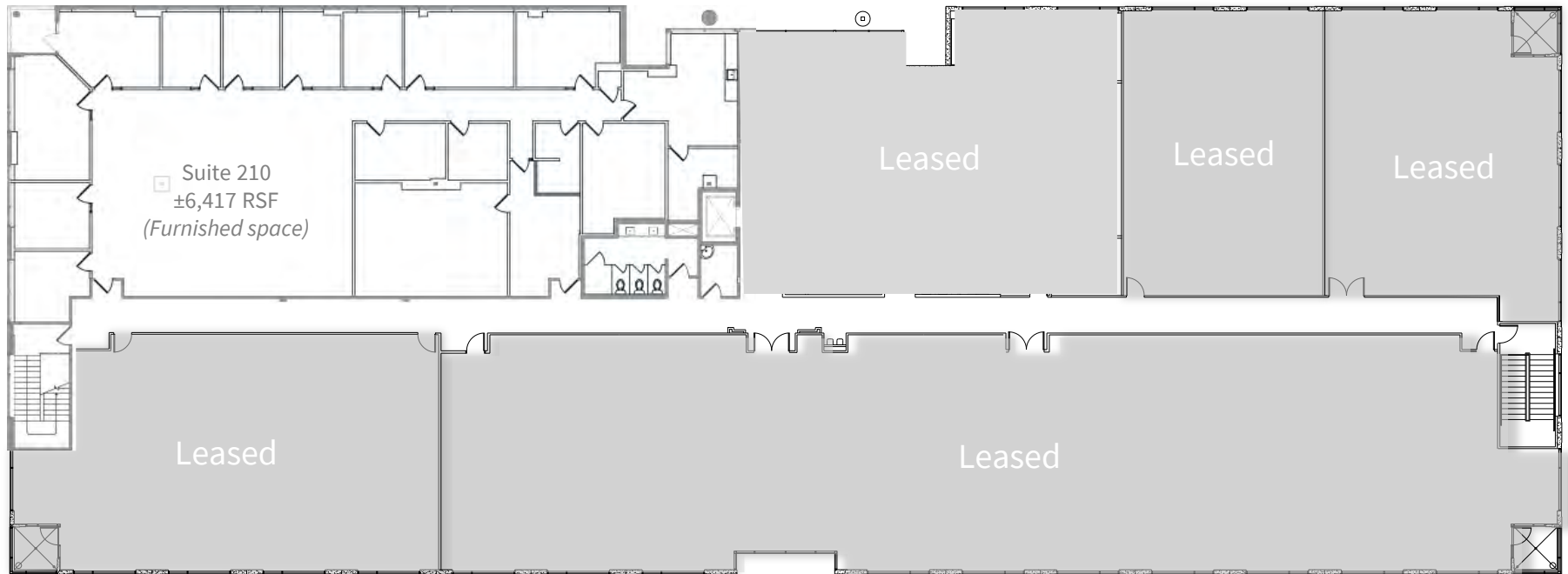
Jones Lang LaSalle Brokerage, Inc., Real estate license #B.1000836.CORP



brookhollow



8329 2nd floor



For more information, please contact:

Nick Barber, SIOR
 Managing Director
 NV Lic. #S.0058027
 +1702 360 4927 (o)
nick.barber@am.jll.com

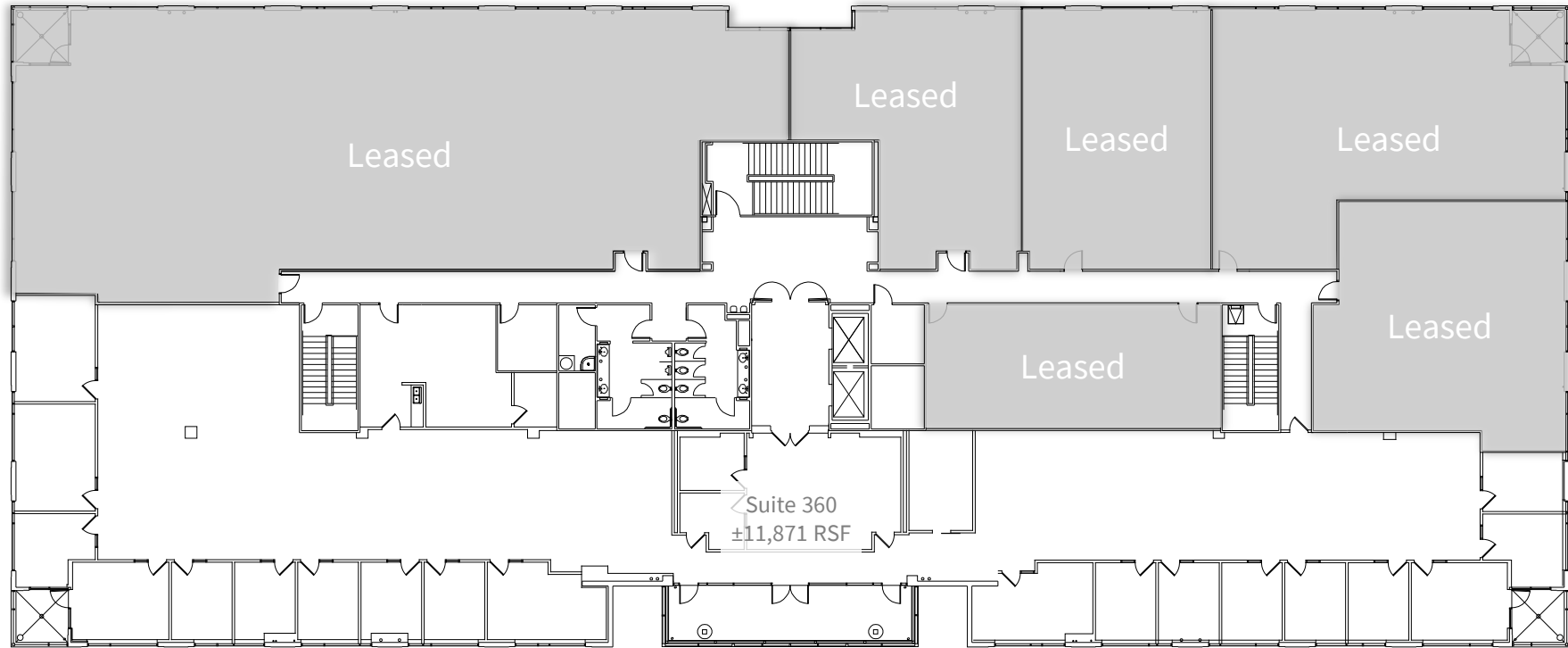
Travis Landes, SIOR
 Executive Vice President
 NV Lic. #S.177027.LLC
 +1702 522 5122(o)
travis.landes@am.jll.com

Lilly Kossoff
 Senior Associate
 NV Lic. #S.195790
 +1702 522 5107(o)
lillian.kossoff@am.jll.com





8345 3rd floor



For more information, please contact:

Nick Barber, SIOR
Managing Director
NV Lic. #S.0058027
+1702 360 4927 (o)
nick.barber@am.jll.com

Travis Landes, SIOR
Executive Vice President
NV Lic. #S.177027.LLC
+1702 522 5122(o)
travis.landes@am.jll.com

Lilly Kossoff
Senior Associate
NV Lic. #S.195790
+1702 522 5107(o)
lillian.kossoff@am.jll.com



Location



#	Location/Communities	Drive time	Distance
1	Mountain's Edge	16 minutes	5.3 miles
2	Southern Highlands	18 minutes	12.1 miles
3	Summerlin	19 minutes	15.2 miles
4	Green Valley	23 minutes	16 miles
5	Inspirada	25 minutes	17.1 miles
6	North Las Vegas	32 minutes	17.9 miles
7	City of Henderson	28 minutes	19.5 miles
8	Providence/Sky Canyon	29 minutes	19.5 miles
9	Centennial Hills	30 minutes	20.5 miles
10	Cadence	32 minutes	20.7 miles
11	McCarran International Airport	13 minutes	9.3 miles
12	The Las Vegas "Strip"	17 minutes	10.3 miles
13	Downtown Las Vegas	29 minutes	16.2 miles

For more information, please contact:

Nick Barber, SIOR
Managing Director
NV Lic. #S.0058027
+1702 360 4927 (o)
nick.barber@am.jll.com

Travis Landes, SIOR
Executive Vice President
NV Lic. #S.177027.LLC
+1702 522 5122(o)
travis.landes@am.jll.com

Lilly Kossoff
Senior Associate
NV Lic. #S.195790
+1702 522 5107(o)
lillian.kossoff@am.jll.com

