

— 248 SUTTER —



— 4,164 SF —
Available Ground Floor Retail



Street Front
signage and
entry

Neighboring
Retailers:


BANANA REPUBLIC

ARC'TERYX



Major pedestrian corridor
connecting Financial
District and Union Square

Over 20,000 hotel rooms in
immediate area



Parking garage directly across
the street with 3 parking
garages in immediate vicinity

Situated near:

- Major flagships including:
Apple | Nike | Dior | Cartier
- Chinatown's Dragon's Gate
(8 million tourists annually)

248 SUTTER

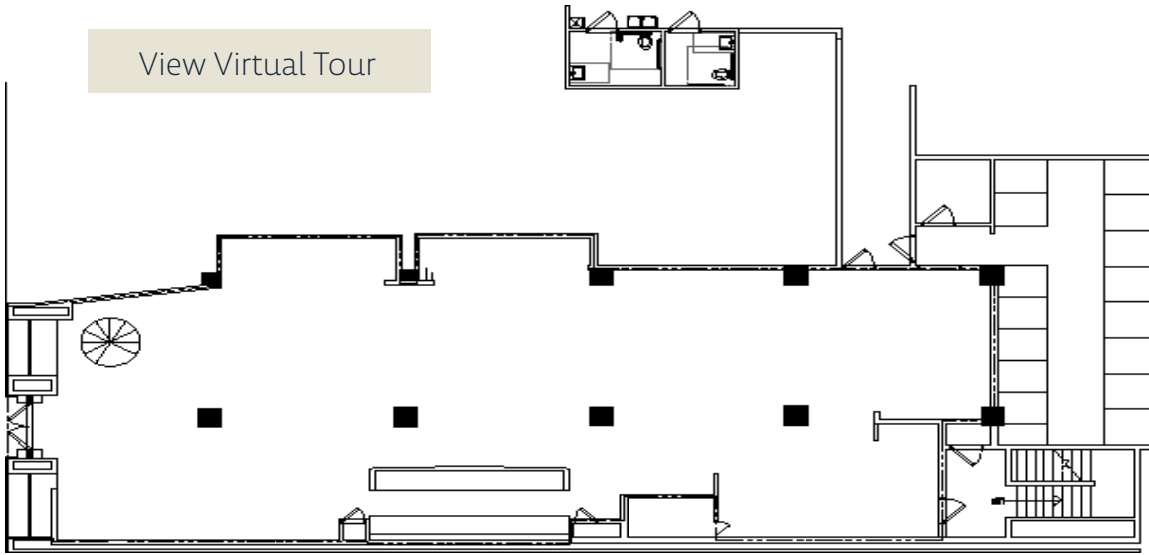


— 248 SUTTER —

— 4,164 SF —

Floor Plan | Ground Floor

[View Virtual Tour](#)



248 SUTTER



FOR LEASING INFORMATION:

LAURA TINETTI
Managing Director
San Francisco Market Lead
+1 415 228 3072
laura.tinetti@jll.com
CA # 01358500

VICTORIA VIET
Associate
+1 936 676 4950
victoria.viet@jll.com
CA # 02442228



Although information has been obtained from sources deemed reliable, JLL does not make any guarantees, warranties or representations, express or implied, as to the completeness or accuracy as to the information contained herein. Any projections, opinions, assumptions or estimates used are for example only. There may be differences between projected and actual results, and those differences may be material. JLL does not accept any liability for any loss or damage suffered by any party resulting from reliance on this information. If the recipient of this information has signed a confidentiality agreement with JLL regarding this matter, this information is subject to the terms of that agreement. ©2026. Jones Lang LaSalle IP, Inc. All rights reserved.