



ALAMEDA POINT FOR SUBLEASE

BUILDING 19: Second Floor Shared Sublease

2175 MONARCH ST, ALAMEDA, CA

Kristi Childers
+1 510 812 2878

kristi.childers@jll.com

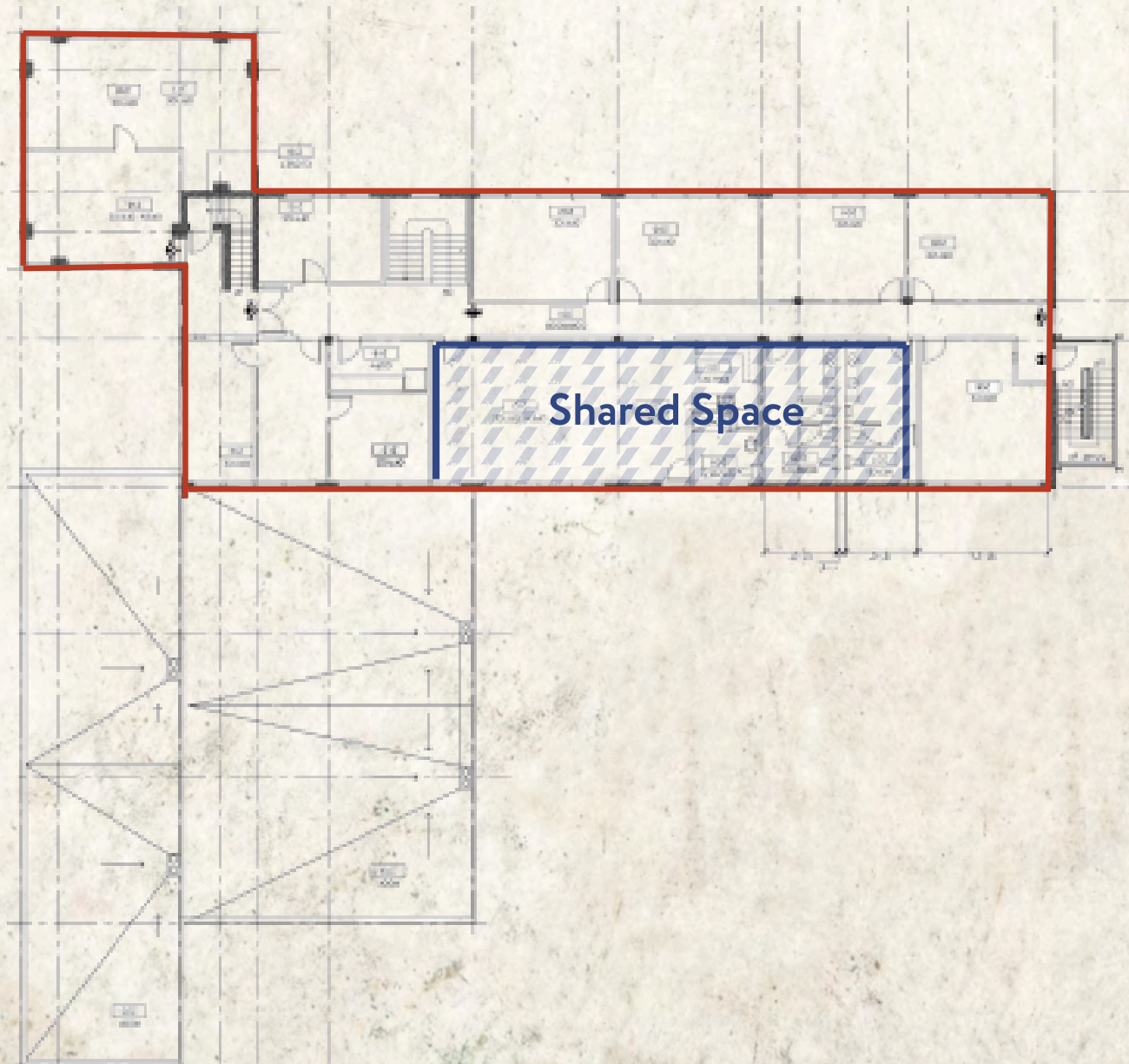
LIC #: 01997043

*Rare Opportunity to
lease office at
Alameda Point!*



2175 MONARCH STREET AT ALAMEDA POINT

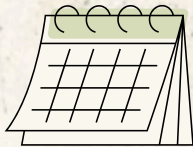
BUILDING 19- Second Floor



SPACE FACTS



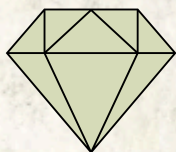
Available Immediately



1- 3 year Flexible Term



SPACE FACTS



**Rare Opportunity to Sublease
Office Space at Alameda Point**



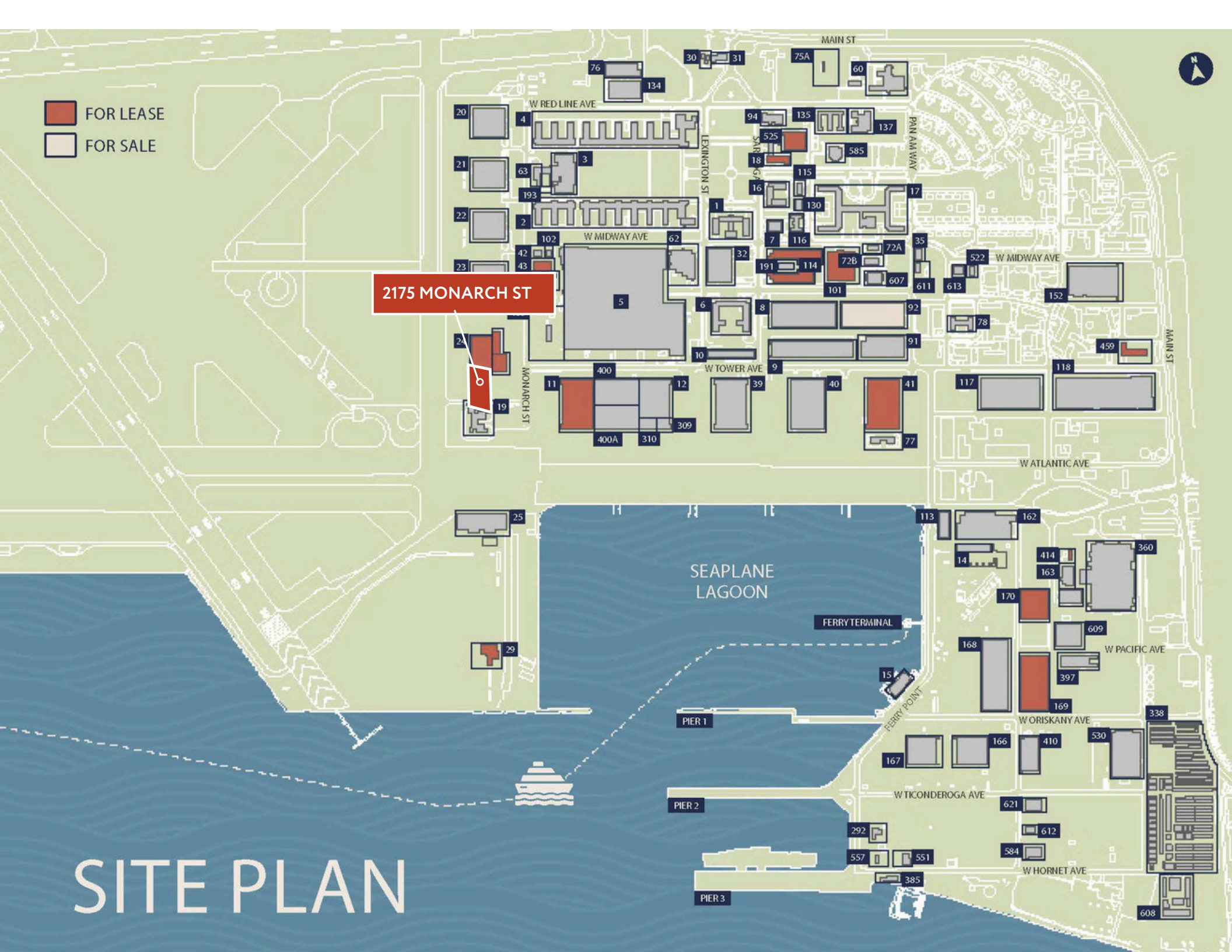
Views of SF



- FOR LEASE
- FOR SALE

2175 MONARCH ST

SITE PLAN





SAN FRANCISCO BAY

Although information has been obtained from sources deemed reliable, neither Owner nor JLL makes any guarantees, warranties or representations, express or implied, as to the completeness or accuracy as to the information contained herein. Any projections, opinions, assumptions or estimates used are for example only. There may be differences between projected and actual results, and those differences may be material. The Property may be withdrawn without notice. Neither Owner nor JLL accepts any liability for any loss or damage suffered by any party resulting from reliance on this information. If the recipient of this information has signed a confidentiality agreement regarding this matter, this information is subject to the terms of that agreement. ©2025, Jones Lang LaSalle IP, Inc. All rights reserved.

OAKLAND
INTERNATIONAL
AIRPORT