

# Building 3



1345 & 1435 BROOKVILLE WAY, INDIANAPOLIS IN 46239



## PARK HIGHLIGHTS

Brookville Business Park is an office/ warehouse center conveniently located off Brookville Road at Shadeland Avenue and I-465. With Shadeland Avenue visibility, the park has easy access to I-465, I-65, I-74 and I-70.



### BUILDING DESCRIPTION

- 130,736 SF building size
- Located in Marion County
- Built in 1992



### BUILDING SYSTEMS

- Wet sprinkler system
- T-5 lighting



### STRUCTURE

- 20' clear height
- 150' building depth
- 30 dock doors
- 13 drive-in doors
- 400 auto parking spots
- I-2 zoning

For more information:

[BrookvilleBusinessPark.com](http://BrookvilleBusinessPark.com)

**Brian Buschuk**  
brian.buschuk@jll.com  
+1 317 810 7180

**Brian Seitz, SIOR**  
brian.seitz@jll.com  
+1 317 810 7184

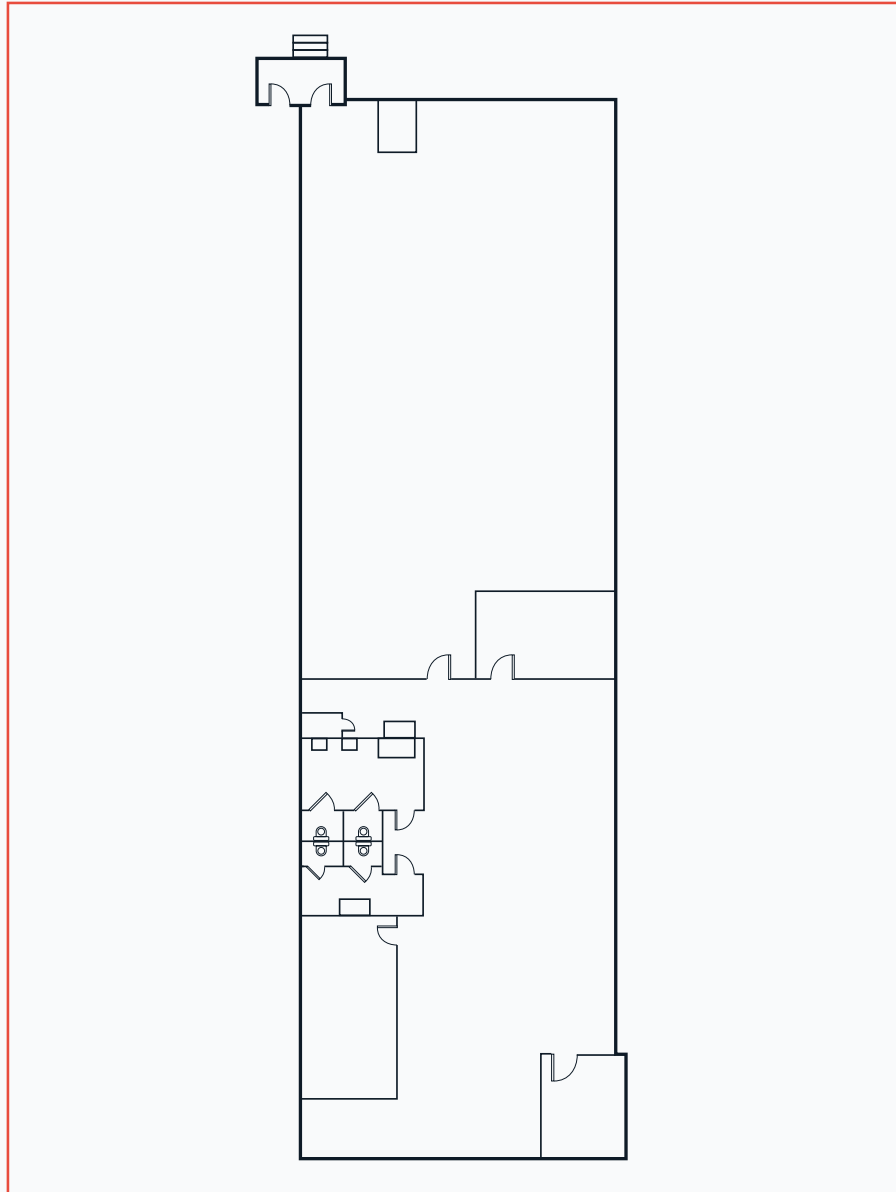
**Griffin Seitz**  
griffin.seitz@jll.com  
+1 317 810 7175

# BUILDING AVAILABILITY



## 1345 Brookville Way, Suite K

- 5,248 SF total
- ±2,800 SF office
- One (1) dock with leveler
- Immediately



For more information:

[BrookvilleBusinessPark.com](http://BrookvilleBusinessPark.com)

### DISCLAIMER

Although information has been obtained from sources deemed reliable, Owner, Jones Lang LaSalle, and/or their representatives, brokers or agents make no guarantees as to the accuracy of the information contained herein, and offer the Property without express or implied warranties of any kind. The Property may be withdrawn without notice. If the recipient of this information has signed a confidentiality agreement regarding this matter, this information is subject to the terms of that agreement. ©2026. Jones Lang LaSalle. All rights reserved.