

5959 Horton St

Emeryville



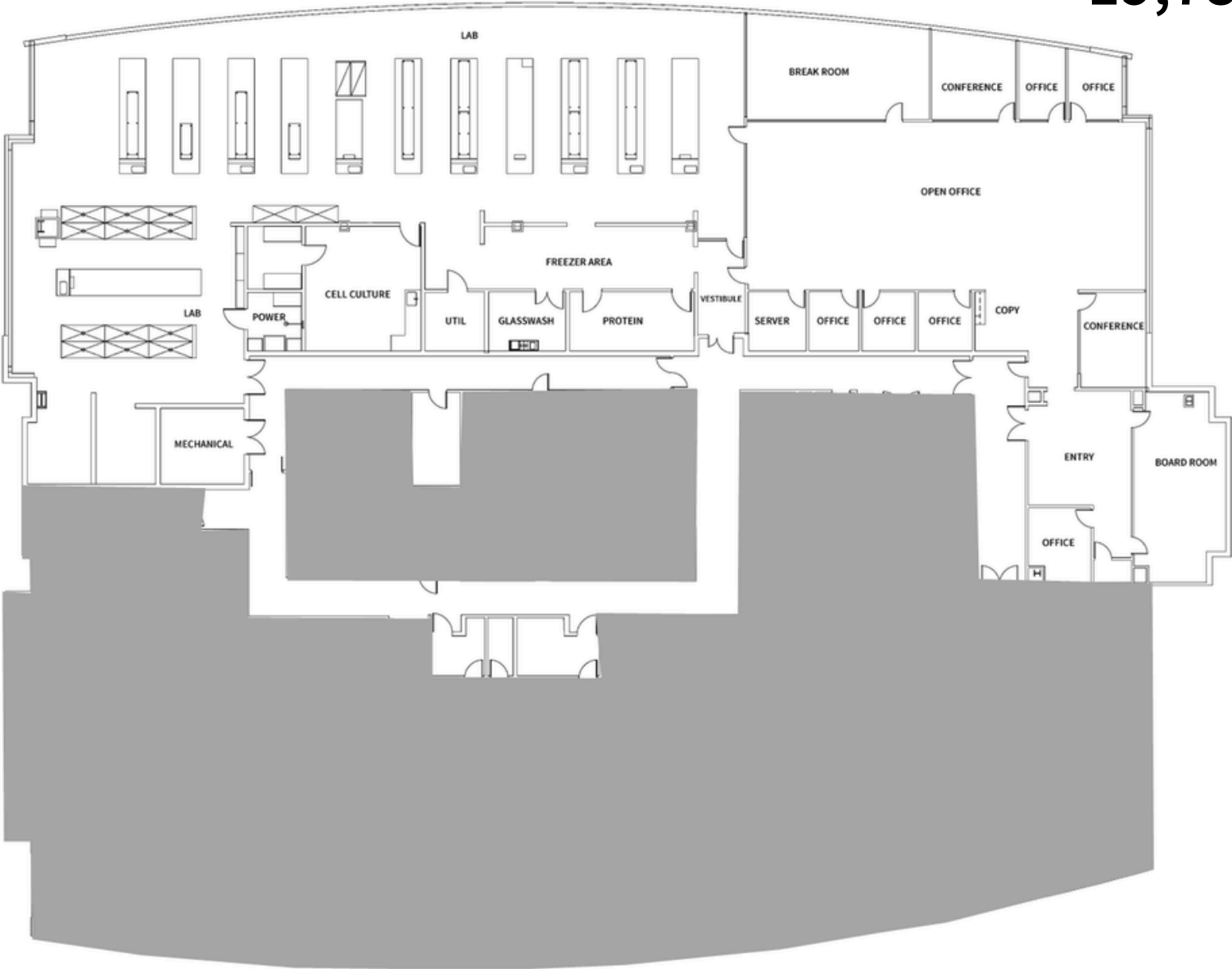
Lab & Office Sublease

4th Floor: 19,788 SF Available



4th Floor

19,788 SF



7 BioSafety Cabinets

Refrigerators

-80 Freezers

Office Furniture

Lab Benches

14 Fume Hoods

16 Incubators

Property Highlights



Plug & play lab equipment and infrastructure with built-in lab benches and sinks



Abundance of food and beverage opportunities throughout campus



60% Lab / 40% Office



Lush organic gardens and art throughout campus



LED: 7.31.2032



Easy access to major highways 580, 24, 880 and SF Bay Bridge



Campus fitness center



Direct access to last mile transit options including AC transit, Emery-Go-Round shuttle to BART, and ride share services



Shared conference rooms throughout campus



2.0/1000 campus parking ratio



Ongoing curated tenant events designed to inspire and connect our community





Jones Lang LaSalle Brokerage, Inc.
RE License #01856260

Grant Yeatman

Grant.Yeatman@jll.com
858.736.5261
CA RE License #01972905

Gabi Lessey

Gabrielle.Lessey@jll.com
650.833.8423
CA RE License #02157473

© 2026 Jones Lang LaSalle IP, Inc. All rights reserved. All information contained herein is from sources deemed reliable; however, no representation or warranty is made to the accuracy thereof.
Jones Lang LaSalle Limited, Licensed under the REA Act 2008