

# AIRWAY LOGISTICS CENTER

8151 AIRWAY ROAD | SAN DIEGO

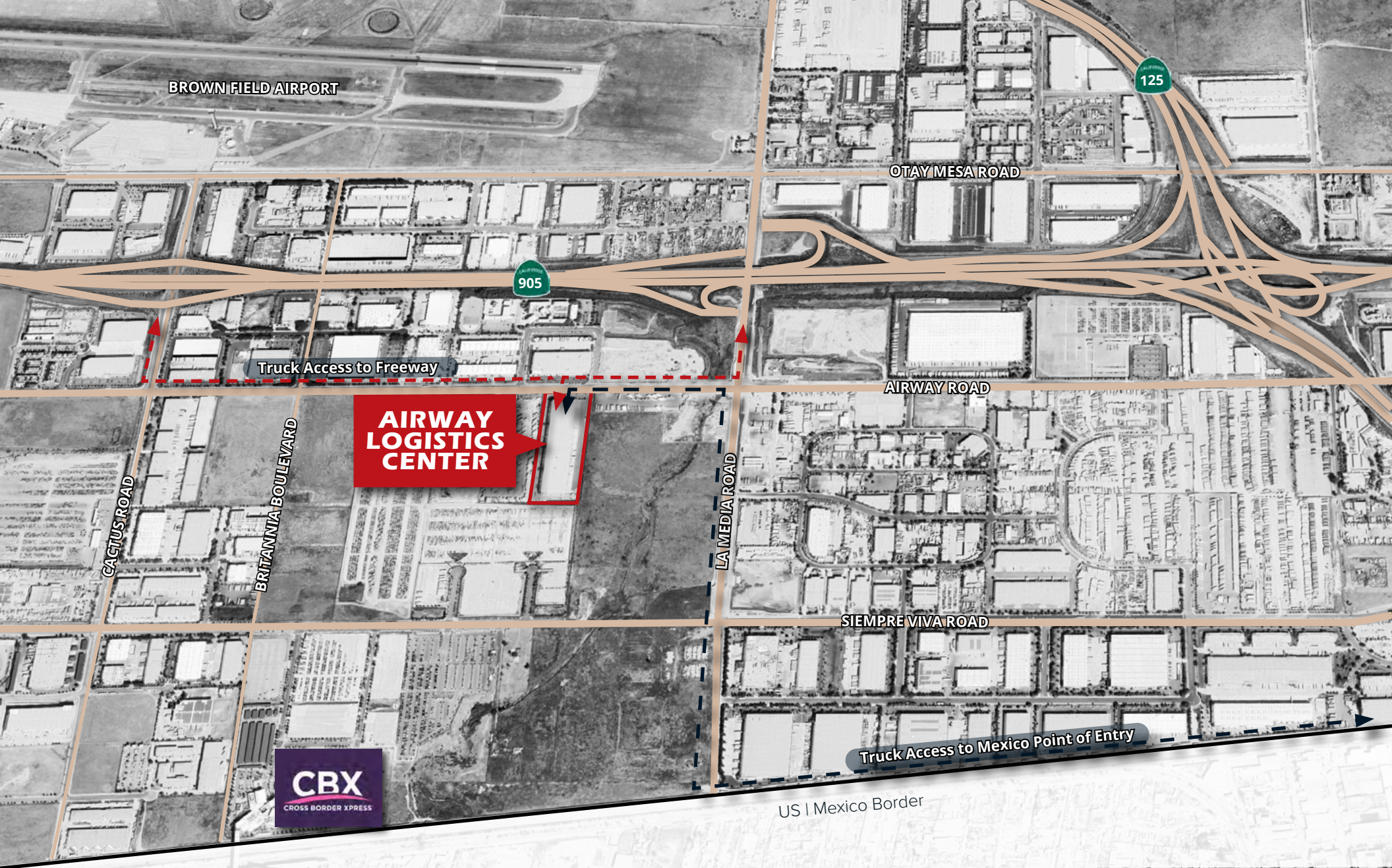


**59,557 SF AVAILABLE FOR LEASE**  
**249,689 SF CLASS A INDUSTRIAL BUILDING**



Jones Lang LaSalle Brokerage, Inc. RE license #01856260





### Direct Freeway Access

Direct freeway access from Britannia Boulevard and La Media Road via SR-905

### Close Proximity to Border Crossings

Close proximity to point of entry border crossings, within 2 miles from the Otay point of entry

Border Quick Stats:

**#1**

THE WORLD'S BUSIEST LAND BORDER CROSSING (SAN YSIDRO & OTAY MESA PORTS OF ENTRY)

**±\$52B**

IN TRADE CROSSES ANNUALLY THROUGH OTAY MESA PORTS OF ENTRY

Major Infrastructure Improvements:

## LA MEDIA

LA MEDIA ROAD EXPANSION NEARING COMPLETION. (CALIFORNIA EXPORTING CORRIDOR)

## OTAY II

THE NEW, STATE OF THE ART, EASTERN PORT OF ENTRY RECEIVED FEDERAL FUNDING AND WILL CONNECT DIRECTLY WITH THE EXTENSION OF SR-11

### Immediate access to:

SR **905**, SR **125**, and SR **11**  
Freeways

### Otay Mesa

Commercial border crossing

### Pilot Travel Center

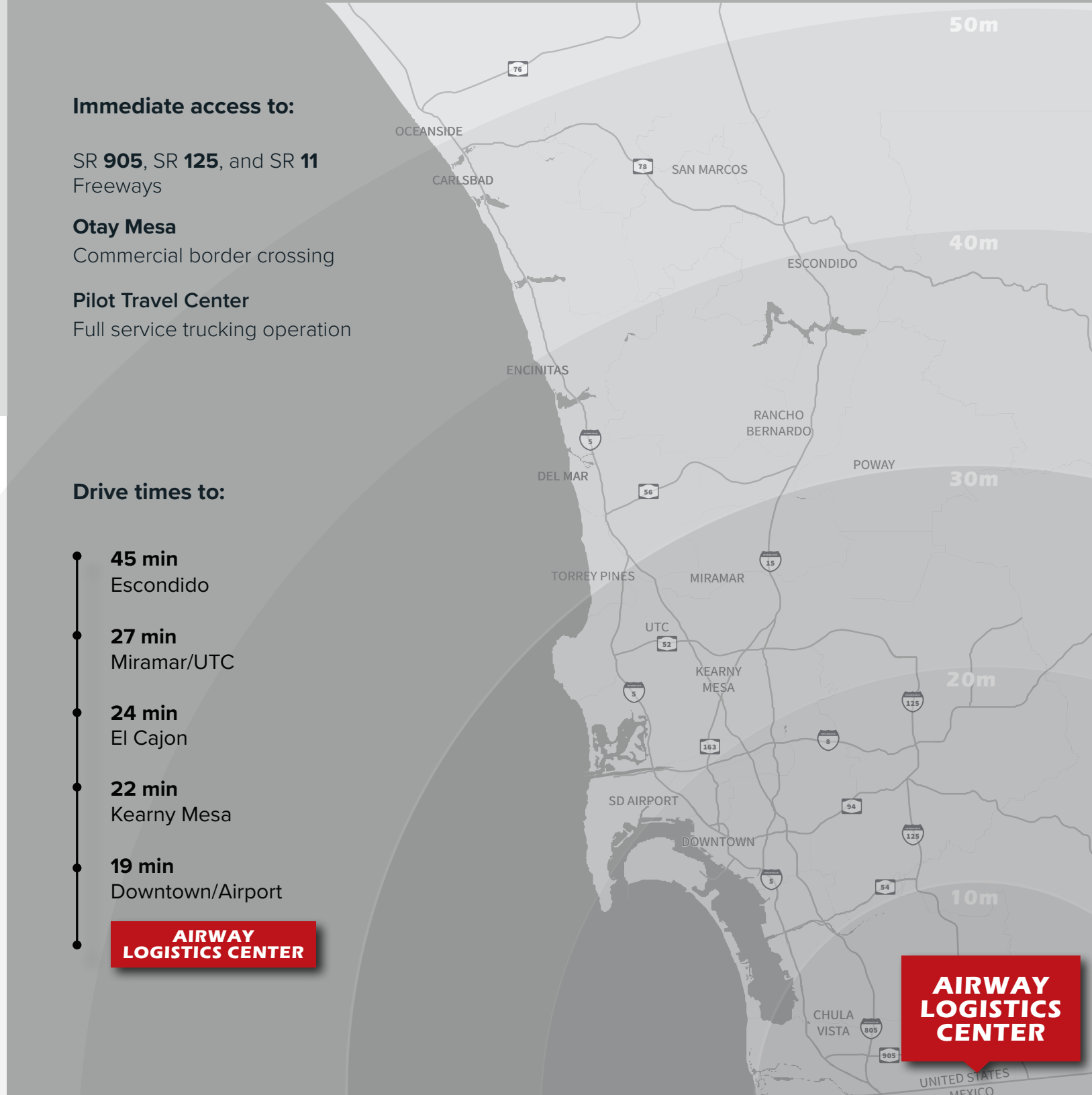
Full service trucking operation

### Drive times to:

- 45 min  
Escondido
- 27 min  
Miramar/UTC
- 24 min  
El Cajon
- 22 min  
Kearny Mesa
- 19 min  
Downtown/Airport

**AIRWAY  
LOGISTICS CENTER**

**AIRWAY  
LOGISTICS  
CENTER**





**±59,557**

TOTAL SPACE (SF)



**16 DOCK**

DOORS WITH EDGE OF DOCK LEVELERS AT ALL DOORS



**±2,087**

SPEC OFFICE UNDER CONSTRUCTION (SF)



**1 GRADE**

DOOR



**60'**

SPEED BAY



**52'-60'**

COLUMN SPACING



**66**

PARKING STALLS (1.12/1,000)



**ESFR**

SPRINKLERS



**32'**

MINIMUM CLEAR HEIGHT



**HEAVY POWER**

UP TO 2,000 AMPS OF 277/480 VOLT

# SITE PLAN



**ESFR**  
sprinklers



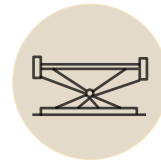
**130'**  
truck court depth



**1: 3,749 SF**  
dock door ratio



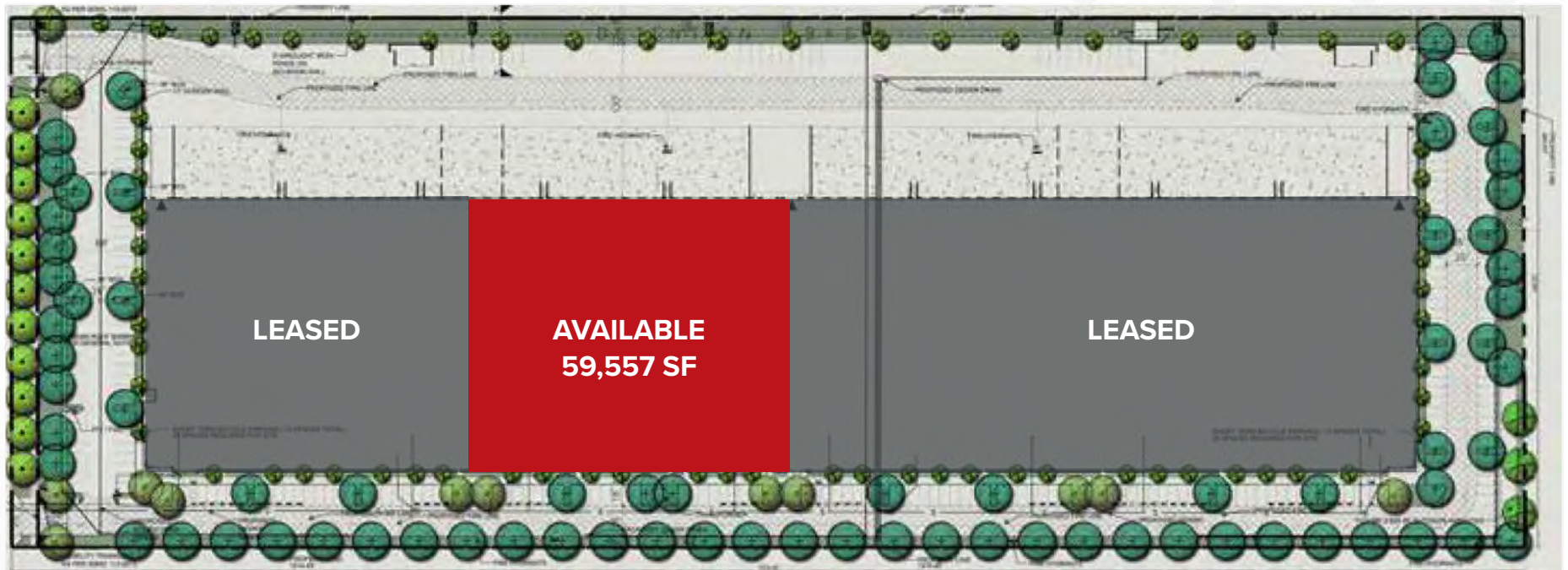
**Freeway Accessible**  
to SR 125 & SR 905



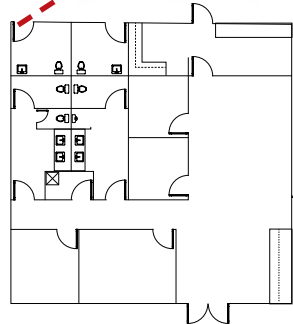
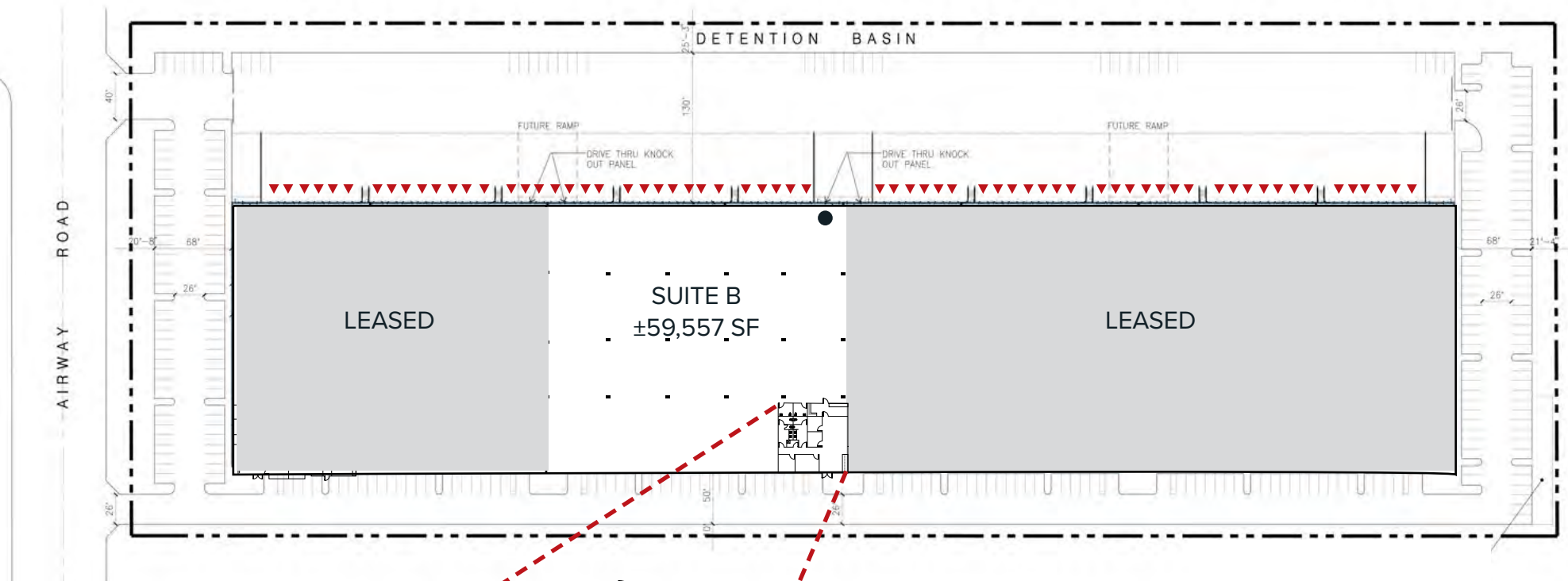
**Dock Levelers**  
on All Doors



**Secure Site**  
with gated access



# FLOOR PLANS

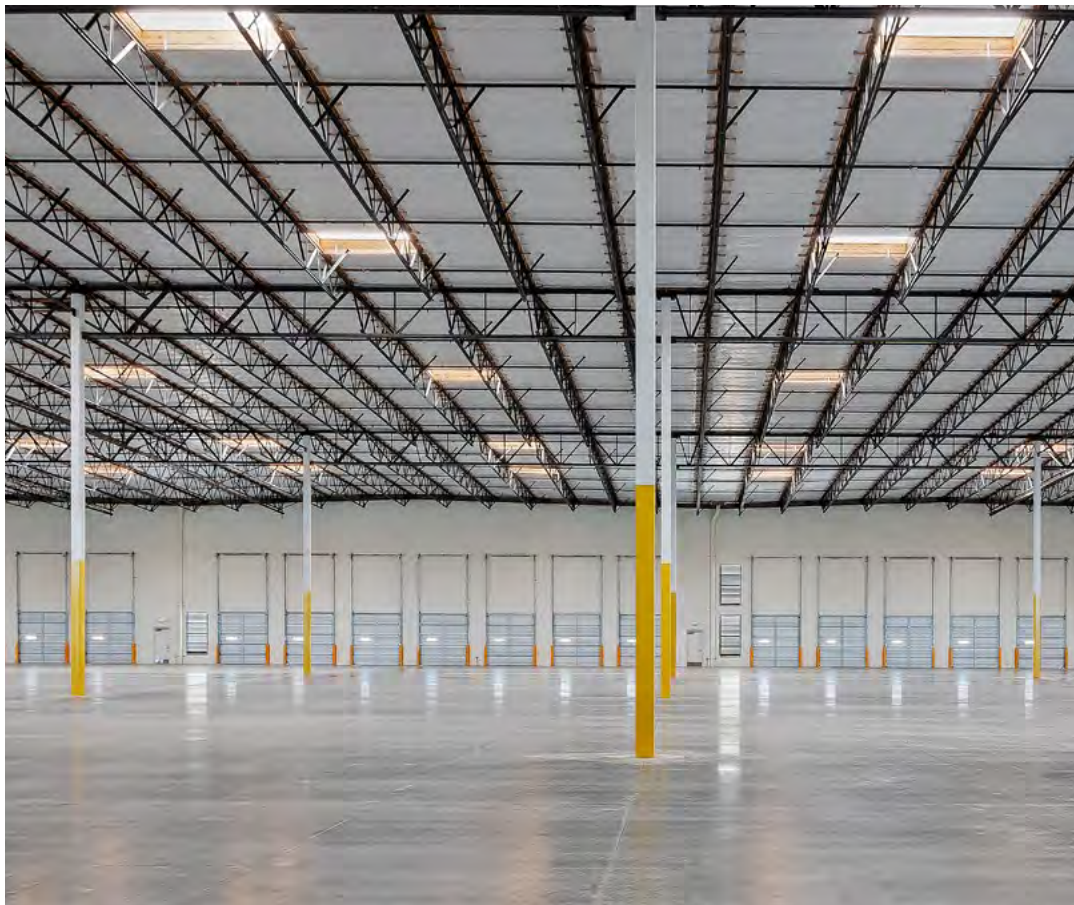


▼ 16 DOCK DOORS

● 1 GRADE LEVEL DOOR

# CORPORATE NEIGHBORS





**Joe Anderson**

+1 619 573 7206  
RE lic. #01509782  
joe.anderson@jll.com

**Scott Delphey**

+1 626 590 0490  
RE lic. #02024720  
scott.delphey@foodpropertiesgroup.com

**Andy Irwin**

+1 858 232 1709  
RE lic. #01302674  
andy.irwin@jll.com

**Matt Delphey**

+1 626 716 0675  
RE lic. #02036100  
matthew.delphey@foodpropertiesgroup.com

**AVAILABLE NOW**



Although information has been obtained from sources deemed reliable, neither Owner nor JLL makes any guarantees, warranties or representations, express or implied, as to the completeness or accuracy as to the information contained herein. Any projections, opinions, assumptions or estimates used are for example only. There may be differences between projected and actual results, and those differences may be material. The Property may be withdrawn without notice. Neither Owner nor JLL accepts any liability for any loss or damage suffered by any party resulting from reliance on this information. If the recipient of this information has signed a confidentiality agreement regarding this matter, this information is subject to the terms of that agreement. ©2021 Jones Lang LaSalle IP, Inc. All rights reserved.