



**240,000 SF & 22 AC  
AVAILABLE**

# Available

## Beaver Valley Industrial Park

[jll.com](http://jll.com)

1729 Pennsylvania Avenue  
Monaca, PA 15061

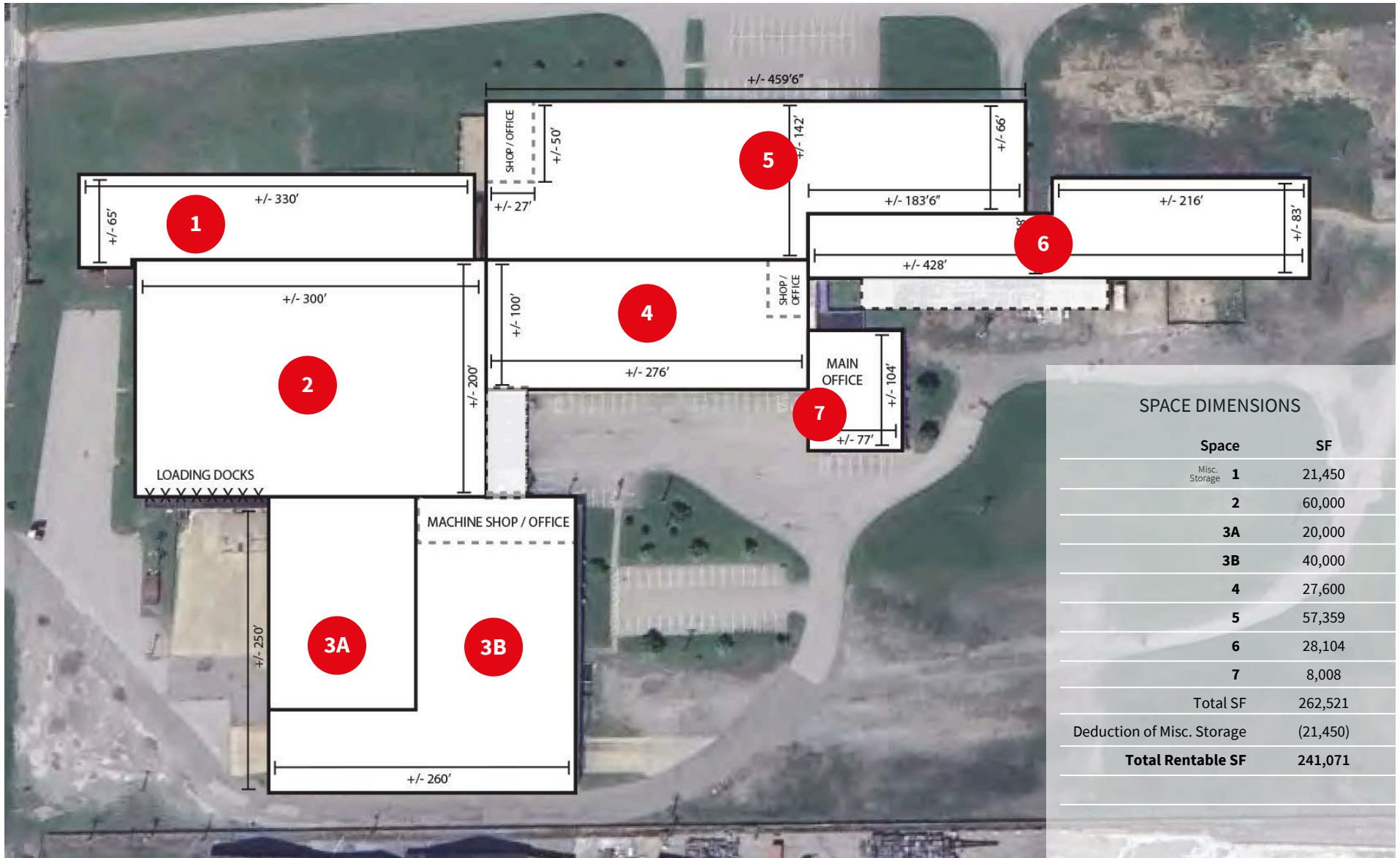
**Rick O'Brien, SIOR**  
rick.obrien@jll.com  
412.208.1403

**Greg Hopkins**  
greg.hopkins@jll.com  
412.770.5295

**Alec Staiger**  
alec.staiger@jll.com  
412.977.4184

 **JLL** SEE A BRIGHTER WAY

# SITE PLAN



SPACE DIMENSIONS	
Space	SF
Misc. Storage <b>1</b>	21,450
<b>2</b>	60,000
<b>3A</b>	20,000
<b>3B</b>	40,000
<b>4</b>	27,600
<b>5</b>	57,359
<b>6</b>	28,104
<b>7</b>	8,008
<b>Total SF</b>	<b>262,521</b>
Deduction of Misc. Storage	(21,450)
<b>Total Rentable SF</b>	<b>241,071</b>

## PROPERTY SPECIFICATIONS

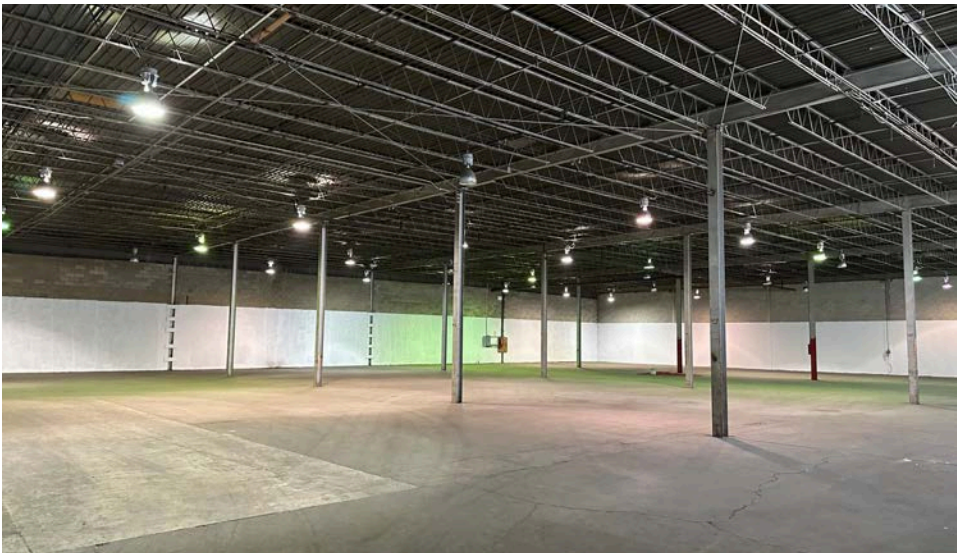
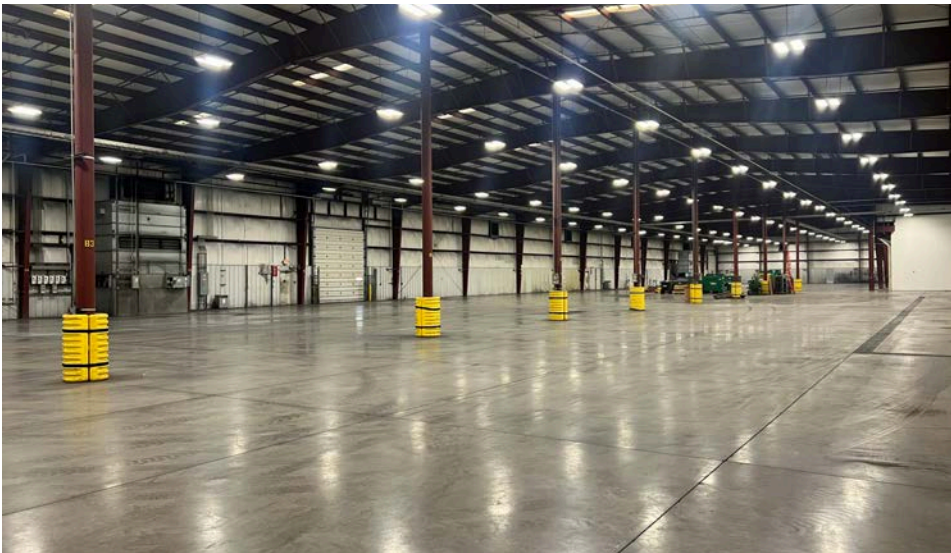
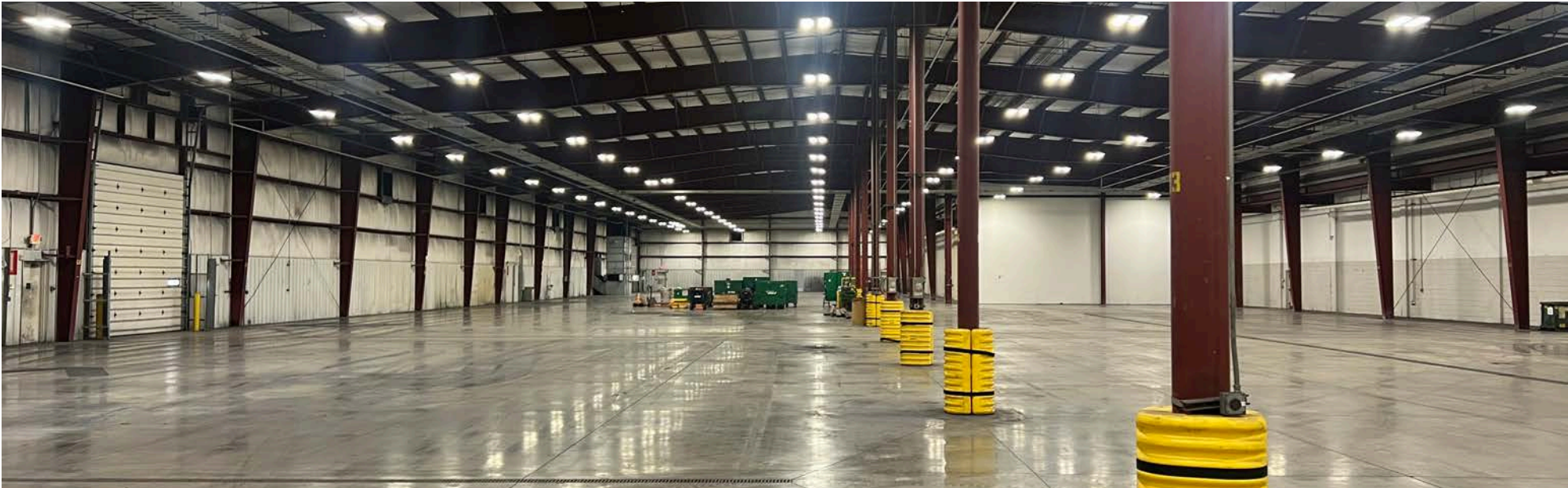
Building Area	270,000 SF
Available Space	240,000 SF (subdividable to +/- 15,000 SF)
Acreage	22.0 AC
Zoning	RBD - Riverfront Business Park District
Clear Height	Spaces 4, 5: 22' - 27'   Spaces 1, 2, 3, 6, 7: 16' - 22'
Docks	7 (8' x 8')
Drive in Doors	10 (16' x 16' and 14' x 12')
Cranes	2 (5T)
Electric	3 Phase: 480 /240/ 110V
Sprinkler System	Ordinary Hazard - Zones of wet and dry systems
Parking Spaces	Ample
Exterior Storage	Ample

## HIGHLIGHTS

- Manufacturing, warehouse & general industrial applications
- Significant exterior storage potential
- Sub-dividable in various increments
- Proven business location
- Easy access to Routes 51, 65 & I-376



PHOTOS



## KEY DISTANCES

3.43 miles (10 min) to I-376

9.1 miles (15 min) to I-79

11.0 miles (20 min) to Cranberry, PA

11.3 miles (20 min) to I-279

19 miles (24 min) to PIT Airport

25 miles (52 min) to Pittsburgh, PA

79 miles (1 hr 20 min) to Wheeling, WV





**240,000 SF & 22 AC  
AVAILABLE**

DISCLAIMER: Although information has been obtained from sources deemed reliable, Owner, Jones Lang LaSalle, and/or their representatives, brokers or agents make no guarantees as to the accuracy of the information contained herein, and offer the Property without express or implied warranties of any kind. The Property may be withdrawn without notice. If the recipient of this information has signed a confidentiality agreement regarding this matter, this information is subject to the terms of that agreement. ©2025. Jones Lang LaSalle. All rights reserved.

[jll.com](https://www.jll.com)

## Contacts

**Rick O'Brien, SIOR**  
rick.obrien@jll.com  
412.208.1403

**Greg Hopkins**  
greg.hopkins@jll.com  
412.770.5295

**Alec Staiger**  
alec.staiger@jll.com  
412.977.4184

 **JLL** SEE A BRIGHTER WAY