



 **JLL** SEE A BRIGHTER WAY

For lease

2605 N 43rd St, Tampa, FL 33605

13,464 SF standalone industrial building
±0.35 AC of outdoor storage

2605 N 43rd St, Tampa, FL

Highlights

Available September 1, 2026

Total size 13,646 SF

Office size 10,402 SF

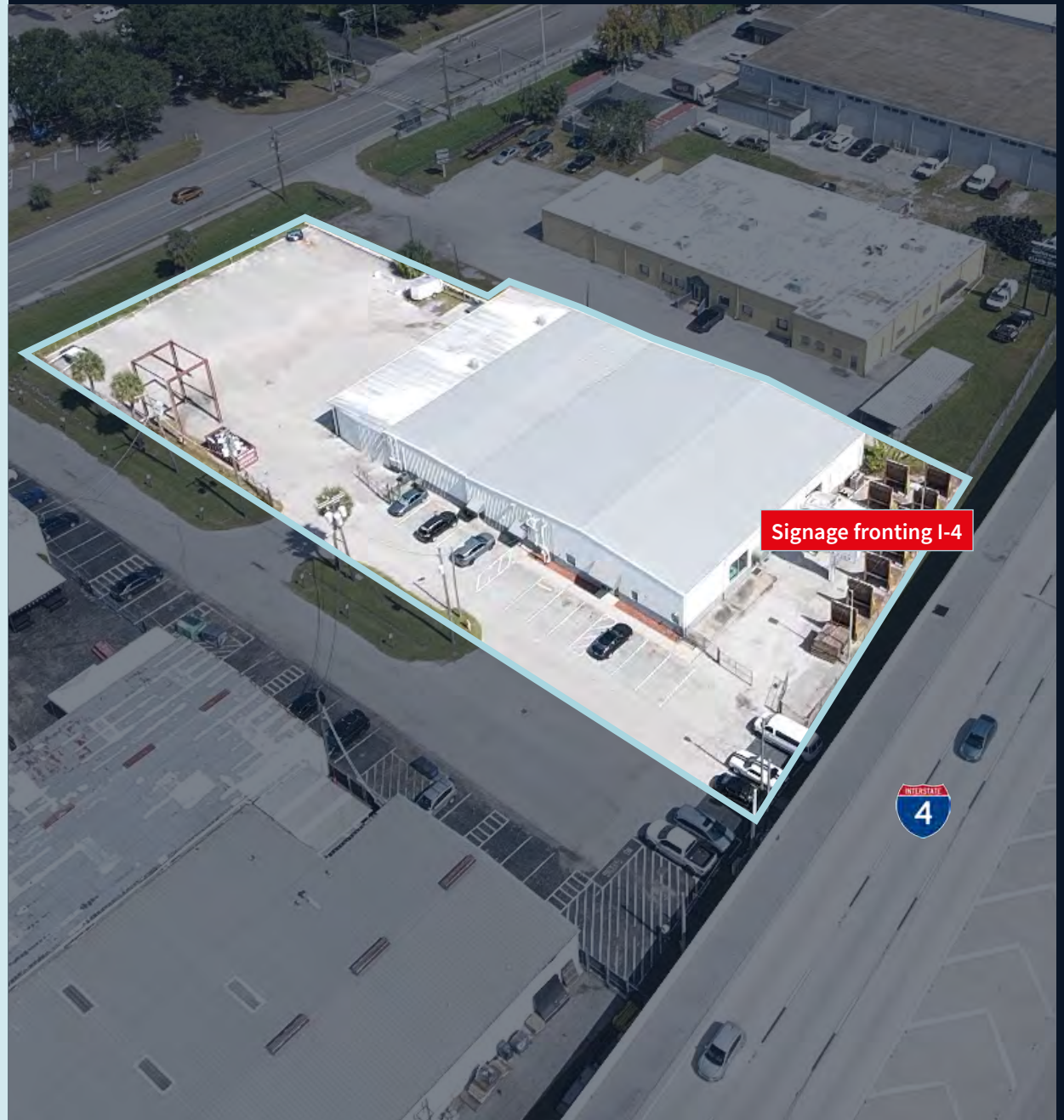
Warehouse size 3,062 SF

Outdoor storage ± 0.35; paved, fenced, and lit

Loading One (1) oversized grade-level door

Signage Grandfathered in signage with I-4 exposure
I-4 daily traffic count ± 175,000

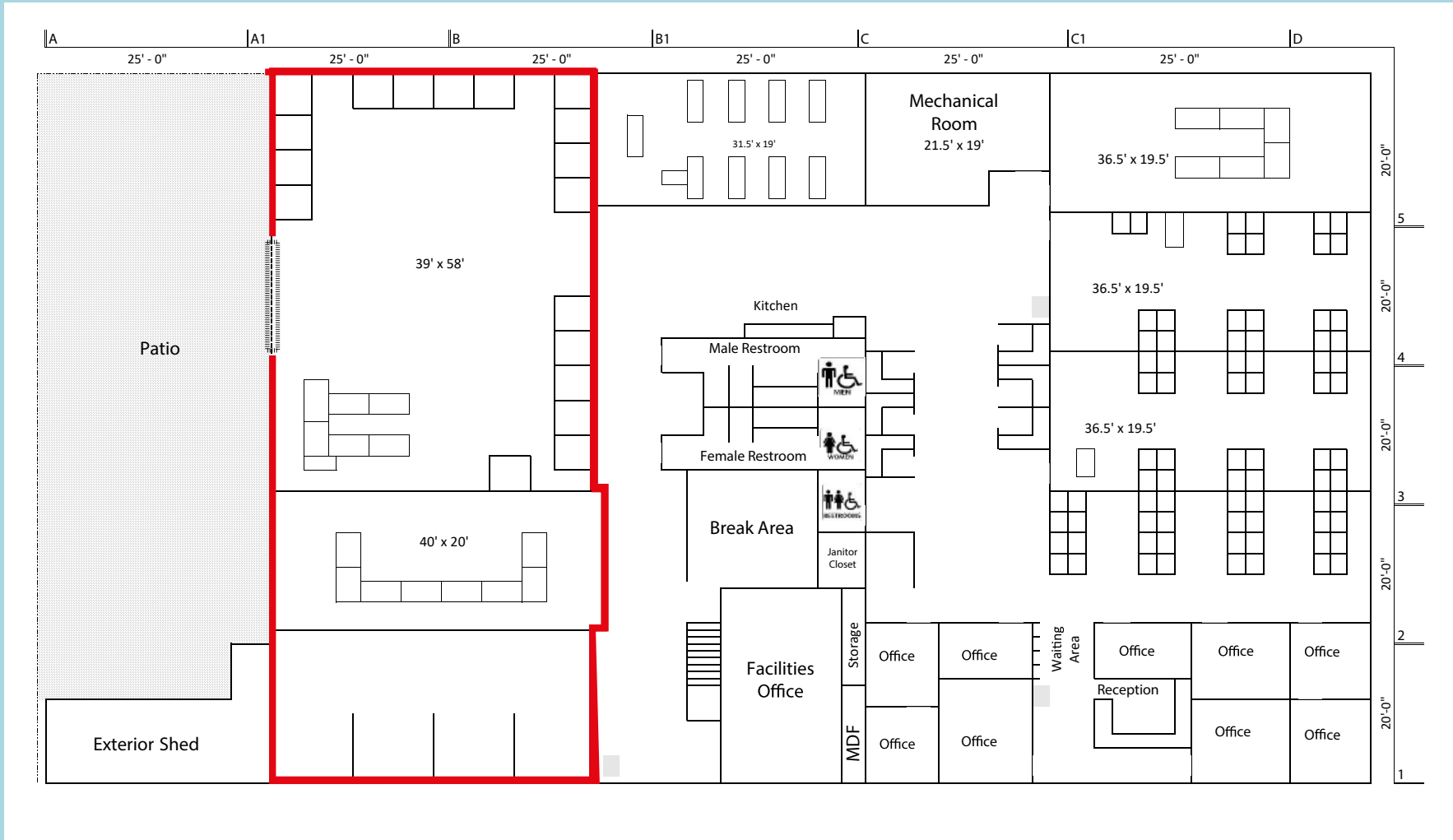
Zoning IG



Outdoor storage



Floor plan



Grade-level door Warehouse

2605 N 43rd St, Tampa, FL

Photos



Access Map



Contact:

Harrison Pithers

Vice President

+1 813 610 0239

harrison.pithers@jll.com

Olivia Brock

Vice President

+1 813 387 1320

olivia.brock@jll.com