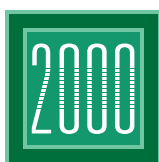




2000 Tower Oaks Boulevard, the healthiest building in Montgomery County, was designed on the strictest principles of green architecture to promote harmony and corporate success. 200,000 SF of luxury office space premeditated around principles of orientation, placement, and proportion to improve productivity, employee health.



# TOWER OAKS BOULEVARD

- Typical column-free floor plate: 23,600 SF
- 9'3" finished ceiling height and column free floor
- Sun-filled offices and panoramic window vistas
- Full time concierge and security
- Green roof, lush garden lobby, high quality finishes
- Organic café
- Glenwood's, upscale dining
- 41% more efficient than other Class A buildings
- 100% air exchange every 51 minutes
- Private fitness facility and meditation room
- Surrounded by 12 acre park
- 100% garage parking
- Direct access to I-270 as well as many nearby shopping and dining options
- Accessibility to White Flint and Twinbrook Metro stations
- LEED® Platinum certified
- Brand New Conference Center



**FOR LEASING INFORMATION PLEASE CALL:**

**AMANDA DAVIS**  
SENIOR MANAGING DIRECTOR  
+1 571 277 3042  
amanda.davis@am.jll.com

**BRIAN TUCKER**  
MANAGING DIRECTOR  
+1 703 485 8883  
brian.tucker@am.jll.com

**DANNY SHERIDAN**  
MANAGING DIRECTOR  
+1 202 510 4151  
danny.sheridan@am.jll.com



### WINTERGREEN PLAZA

- Aardvark Swim & Sport
- ABC's & 1-2-3's
- Adventure Theatre MTC
- Bray & Scarff
- Capital Martial Arts
- Caring Hands Animal Hospital
- Chipotle Mexican Grill
- Classic Beer & Wine
- Dunkin' Donuts
- Fantastic Sams
- Food Lion
- Gold's Gym
- Good Feet
- Habit Burger
- Hear USA
- Jenny Craig
- Jersey Mike's
- Ki No Spoon
- Nails by Timothy
- Nick's Shoe Repair
- Niwano Hana Japanese Restaurant
- Oasis Hair Salon
- Paisano's Pizza
- Rocklands Barbeque & Grilling Company
- Rockville Lock & Safe
- Rockville Soccer
- Sport & Spine Rehab
- Sprint Store by AdComm Digital
- Starbucks
- Sweet Frog
- Ten Ren Tea Ginseng
- Tennistopia
- Timothy's Salon and Spa
- Total Hockey
- Unique Fine Jewelry
- Wingstop
- Wintergreen Family Dentistry



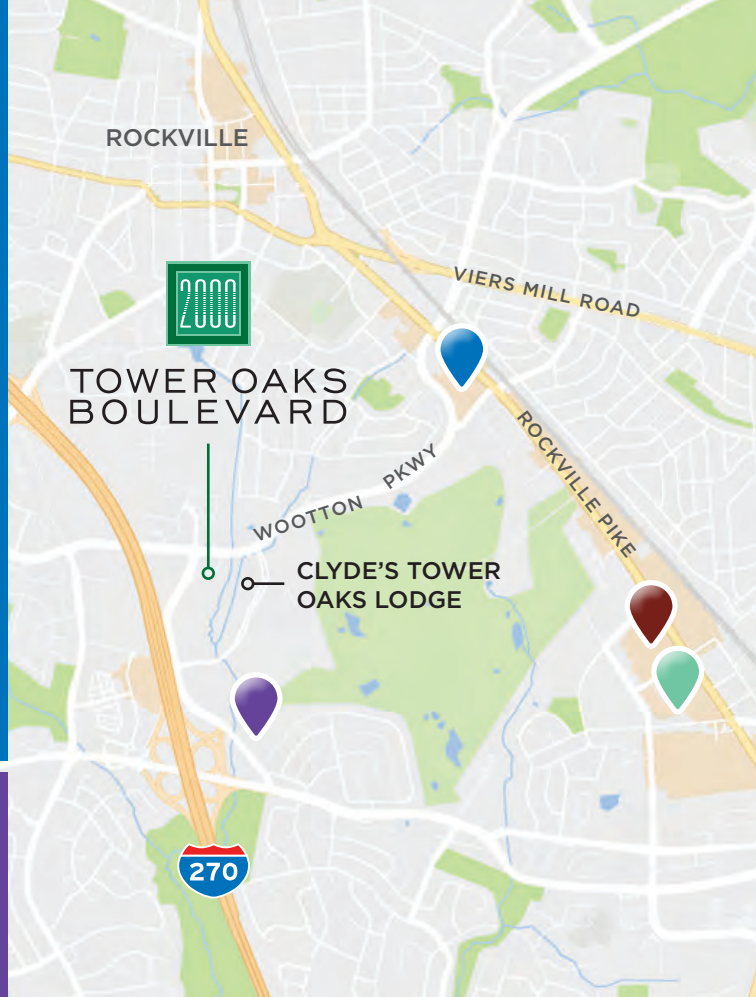
### NORTH CONGRESSIONAL PLAZA

- Bed, Bath & Beyond
- Michaels Crafts
- Petco
- Salon Plaza
- Staples
- Sun Trust



### CONGRESSIONAL PLAZA

- Appalachian Spring
- As Kindred Spirits
- Baja Fresh
- Banana Leaves Cafe
- Banner's Hallmark
- Bark!
- Baskin Robbins
- Beer & Wine Cellar
- buy buy Baby
- Capital One
- Cartoon Cuts
- Chico's
- Child's Play
- Chopt
- Congressional Aquarium
- Congressional Barber Shop
- Curves
- Fairytale Brides on a Shoestring Boutique
- GadgetFix Center
- Hair Cuttery
- Hinode Japanese Restaurant
- Honeyfish Poke
- Last Call Studio by Neiman Marcus
- Lebanese Taverna Cafe
- LOFT
- Lucy
- Massage Heights
- Matchbox
- Medifast Weight Control Centers
- Modern Market
- Nails by Sean
- Noodles & Company
- Oxygen Salon & Day Spa
- Performance Bike
- PNC Bank
- Richey Shoes & Co.
- Saks Fifth Avenue Off 5th
- Silver Moon Jewelry & Accessories
- The Container Store
- The Progress Club
- Thomasville Furniture
- Tuesday Morning
- Ulta Beauty
- Wells Fargo
- White House I Black Market



### PARK POTOMAC

- Addie's
- Charles Schwab
- Eagle Bank
- Elevation Burger
- Emily Grace
- Filcori Zecchini Coffee
- Gringos & Mariachis
- Harris Teeter
- Kaufmann Jewelers
- Love Couture Bridal
- MoCo's Founding Farmers
- Orange Theory Fitness
- Orchid Nails & Spa
- Royal Valet
- Sugo
- Travel Place
- Wine Harvest
- Zoës Kitchen



### FOR LEASING INFORMATION PLEASE CALL:

**AMANDA DAVIS**  
SENIOR MANAGING DIRECTOR  
+1 571 277 3042  
amanda.davis@am.jll.com

**BRIAN TUCKER**  
MANAGING DIRECTOR  
+1 703 485 8883  
brian.tucker@am.jll.com

**DANNY SHERIDAN**  
MANAGING DIRECTOR  
+1 202 510 4151  
danny.sheridan@am.jll.com





Typical Floor Plate



Hypothetical Multi-Tenant Plan



TENANT B LEGEND:  
 OFFICE COUNT: 25  
 WORKSTATION COUNT: 3  
 TOTAL: 28

12,170 RSF  
 435 SF PER PERSON

TENANT A LEGEND:  
 OFFICE COUNT: 2  
 WORKSTATION COUNT: 55  
 TOTAL: 57

11,458 RSF  
 2015 SF PER PERSON

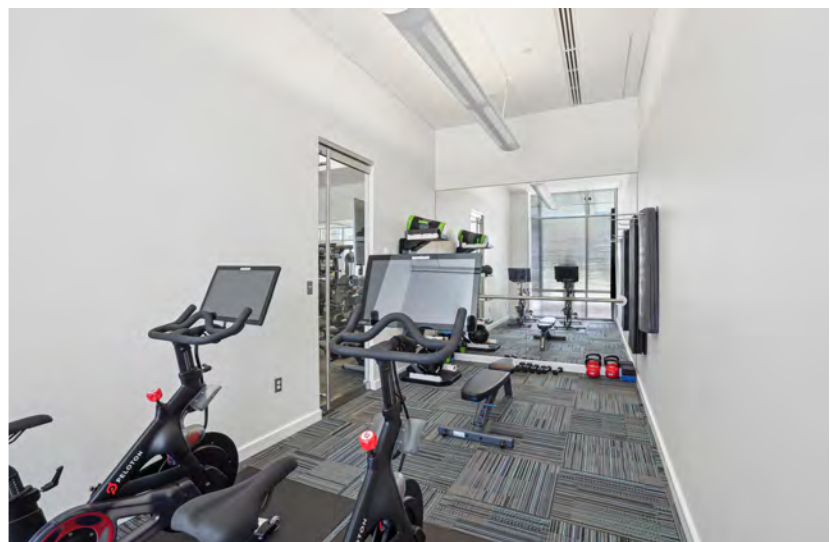
**FOR LEASING INFORMATION PLEASE CALL:**

**AMANDA DAVIS**  
 SENIOR MANAGING DIRECTOR  
 +1 571 277 3042  
 amanda.davis@am.jll.com

**BRIAN TUCKER**  
 MANAGING DIRECTOR  
 +1 703 485 8883  
 brian.tucker@am.jll.com

**DANNY SHERIDAN**  
 MANAGING DIRECTOR  
 +1 202 510 4151  
 danny.sheridan@am.jll.com





**FOR LEASING INFORMATION PLEASE CALL:**

**AMANDA DAVIS**  
 SENIOR MANAGING DIRECTOR  
 +1 571 277 3042  
 amanda.davis@am.jll.com

**BRIAN TUCKER**  
 MANAGING DIRECTOR  
 +1 703 485 8883  
 brian.tucker@am.jll.com

**DANNY SHERIDAN**  
 MANAGING DIRECTOR  
 +1 202 510 4151  
 danny.sheridan@am.jll.com

