



 JLL | Yorkstone

10 KING EAST

THE HIDDEN GEM
OF FINANCIAL DISTRICT


KATE RIZZARDO*

Associate | kate.rizzardo@jll.com | 647 464-5033

Elevate Your Business in a LEED Gold Certified Building Offering Modern, Flexible, and Recently Renovated Office Spaces.


Situated at the prime intersection of Yonge and King Street, 10 King Street East offers a prestigious office address in the vibrant core of downtown Toronto. This recently renovated, 15-story building boasts a total of 59,268 Sq.Ft. of modern, flexible workspace to accommodate businesses of all sizes. With a range of available suites from 1,500 to 4,400 Sq.Ft., 10 King Street East provides the perfect canvas for companies seeking to elevate their presence in the city's thriving commercial landscape.




 **Total Square Footage:**
59,268 sq. ft.

 **Cutting-edge** technological amenities including high-speed internet and smart building features

 **Available Suite Sizes:**
1,500 - 4,400 sq. ft.

 **Efficient, column-free** floor plates with abundant natural light

 **Recent renovations**
completed in 2024



Availabilities

SUITE	SIZE	AVAILABILITY
200	4,371 SF	30 Days
400	4,348 SF	Immediate
800	1,421 SF	July 1st, 2026
801	2,926 SF	Immediate
1100	4,354 SF	LEASED
1401	1,660 SF	Immediate



Additional Rent Est (2026):
\$28.92 psf



Asking Net Rent:
Please Contact Agent



Sustainability & Tenant Amenities



LEED Gold certification



Onsite property management and 24/7 security



Secure bicycle storage



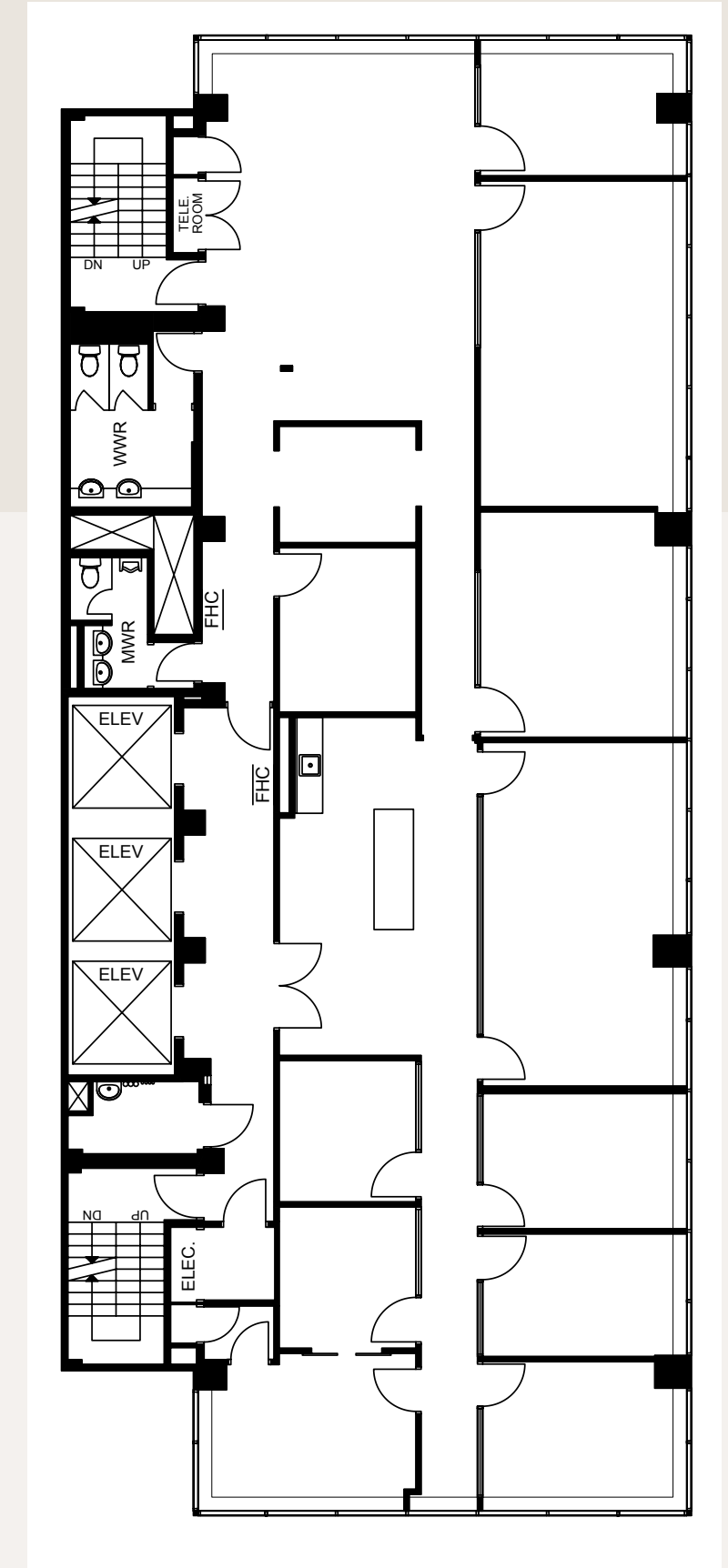
Inviting lobby and common areas designed to foster collaboration and productivity

2ND FLOOR Suite 200

SIZE: 4,371 SF

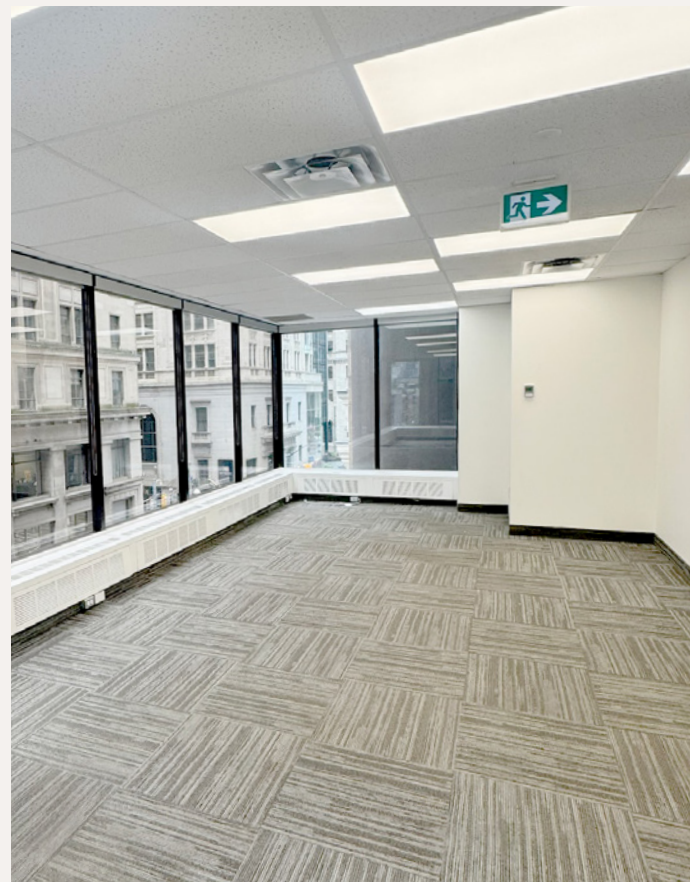


- FULL-FLOOR OFFICE
- LARGE CONFERENCE ROOM
- 9 PRIVATE OFFICES
- SPACIOUS OPEN-CONCEPT WORK AREA
- COPY ROOM/ STORAGE
- KITCHEN
- LARGE WINDOWS THROUGHOUT THE UNIT, FILLED WITH NATURAL LIGHT

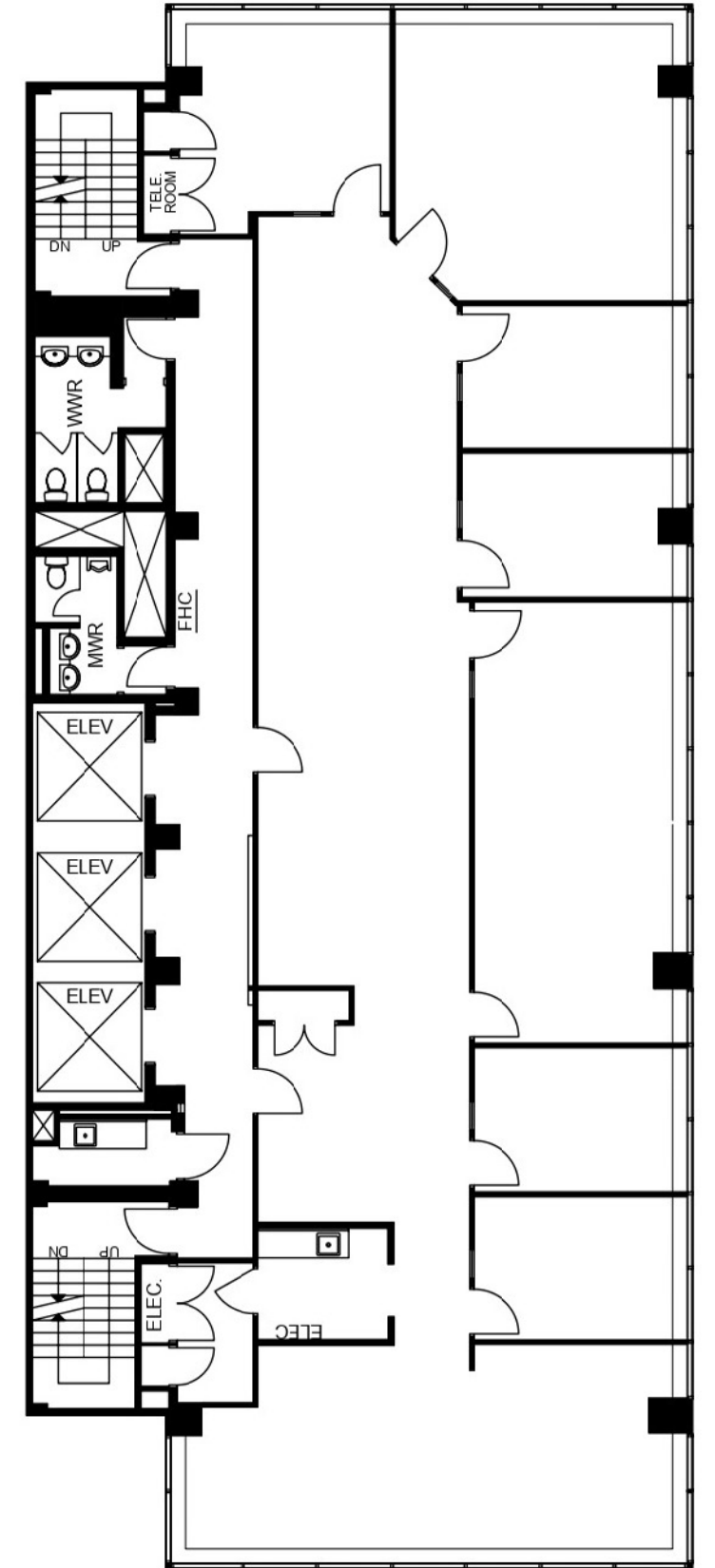


4TH FLOOR Suite 400

SIZE: 4,348 SF

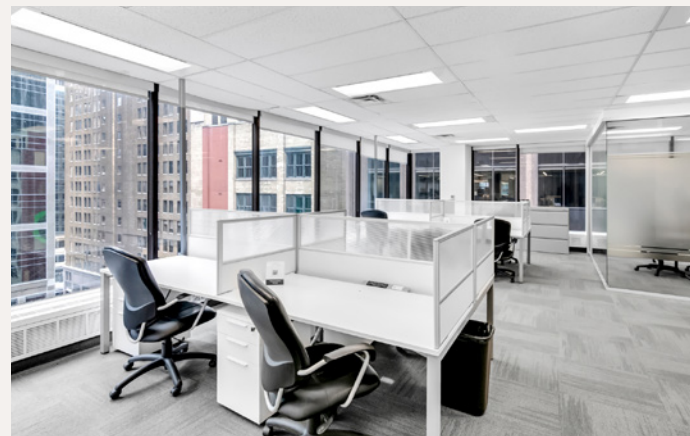
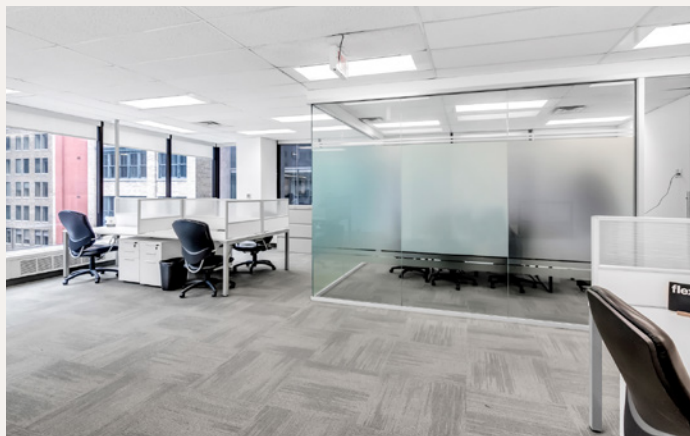


- FULL-FLOOR OFFICE SPACE
- POTENTIAL OF DIVIDING INTO TWO SMALLER OFFICES WITH SEPARATE ENTRANCES
- SPACIOUS RECEPTION AREA
- 1 LARGE CONFERENCE ROOM
- 1 MEETING ROOM/ BREAKOUT ROOM
- 5 PRIVATE OFFICES
- TWO SPACIOUS OPEN-CONCEPT WORK AREAS
- SEPARATE FULLY-EQUIPPED KITCHEN
- LARGE WINDOWS THROUGHOUT THE UNIT, FILLED WITH NATURAL LIGHT
- FURNITURE AVAILABLE

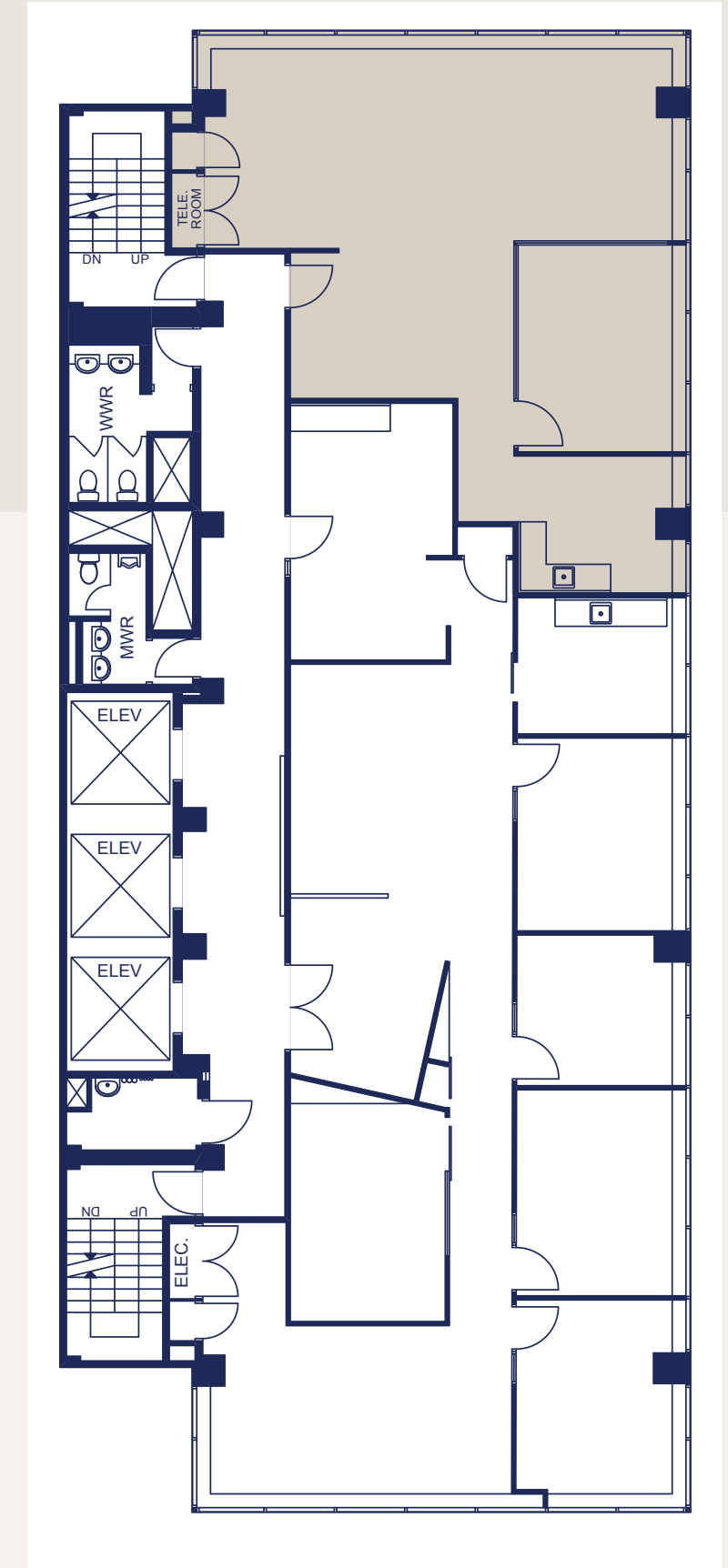


8TH FLOOR Suite 800

SIZE: 1,421 SF



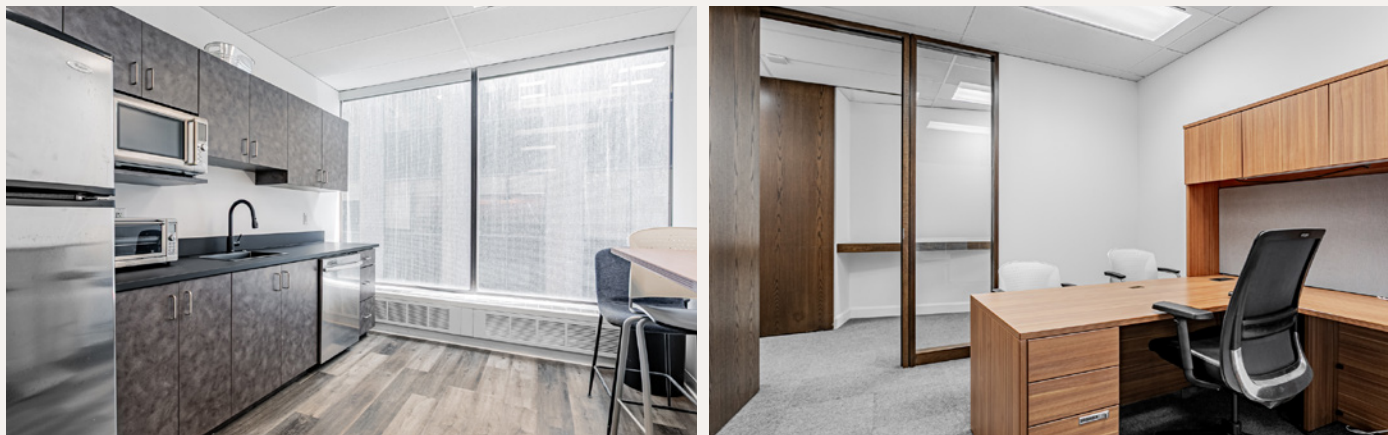
- FULLY FURNISHED
- BUILT OUT
- 10 WORKSTATIONS
- 1 GLASS BOARDROOM
- IN-SUITE KITCHENETTE
- NORTH FACING CORNER UNIT WITH LOTS OF NATURAL LIGHT



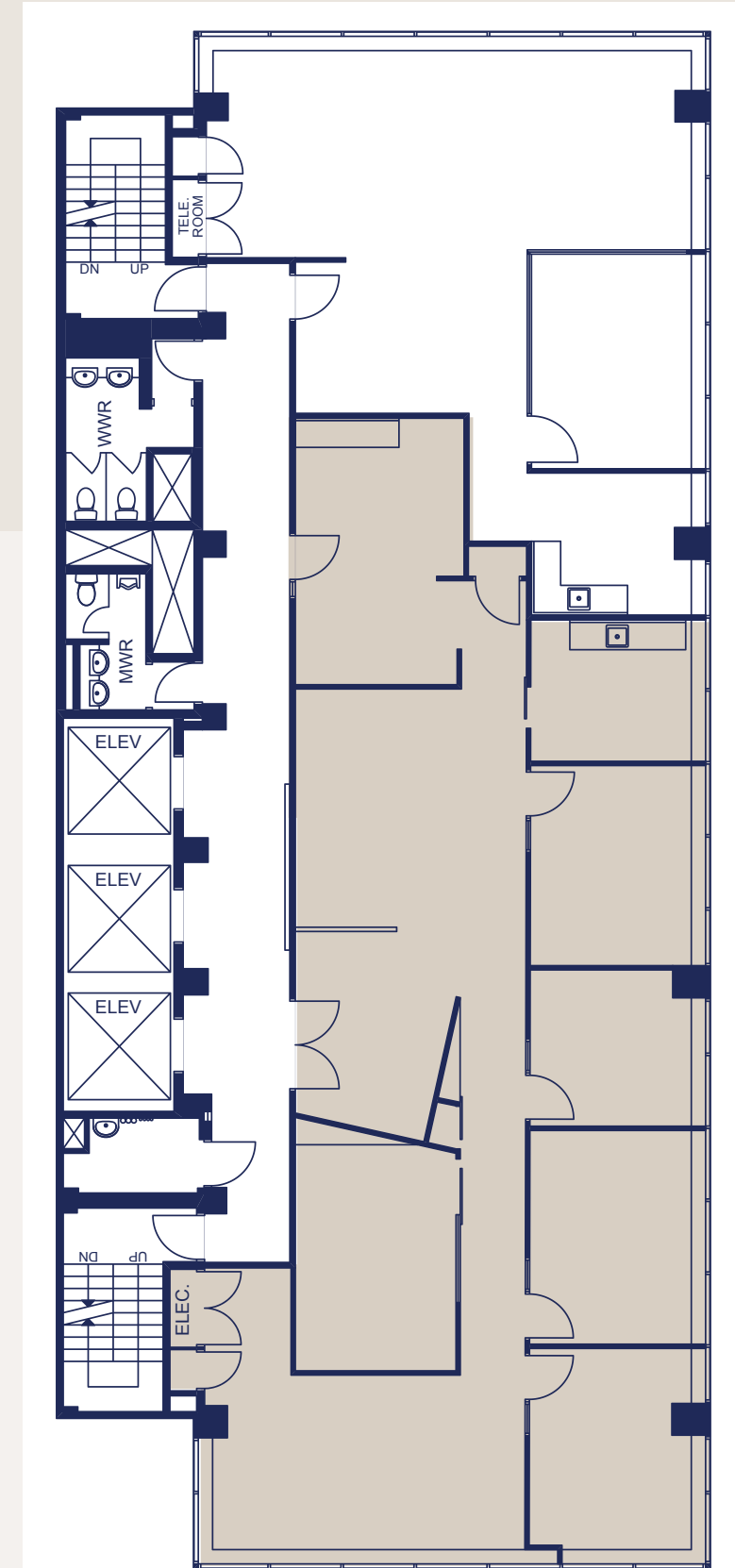
8TH FLOOR

Suite 801

SIZE: 2,926 SF



- RECEPTION AREA
- 1 MEETING ROOM
- 4 PRIVATE OFFICES
- MULTIPLE OPEN-CONCEPT WORK AREAS
- COPY ROOM/STORAGE
- SEPARATE KITCHEN
- LARGE WINDOWS THROUGHOUT THE UNIT
- FURNITURE AVAILABLE



11TH FLOOR

Suite 1100

SIZE: 4,354 SF



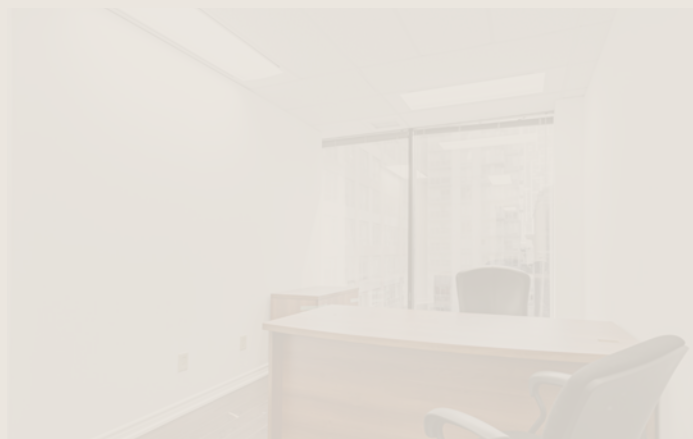
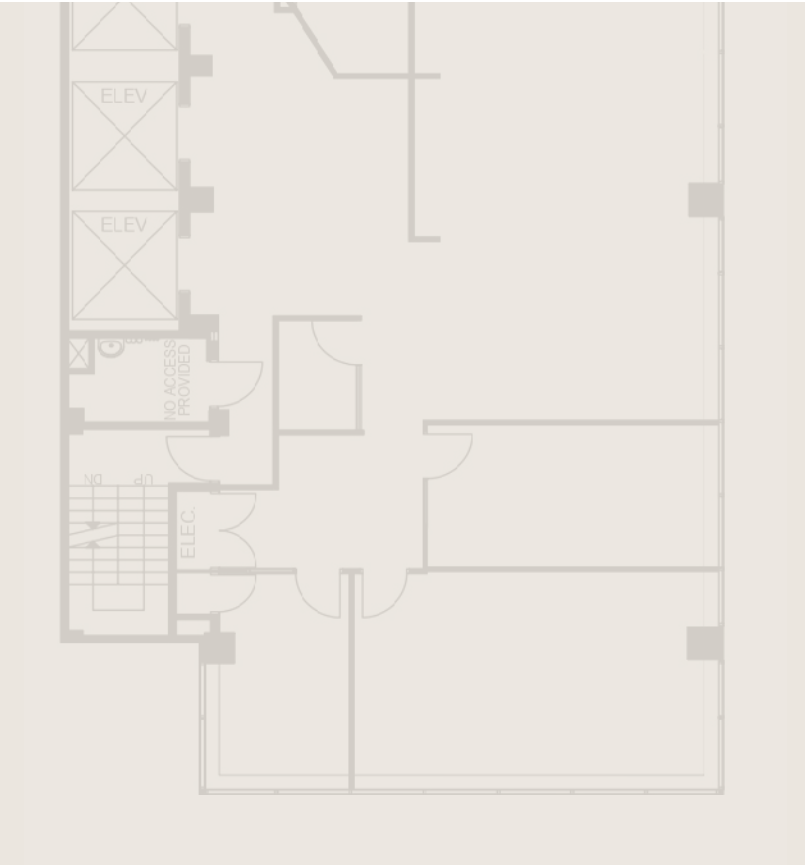
- FULL-FLOOR
- DEDICATED RECEPTION AREA
- 1 LARGE CONFERENCE ROOM
- 4 PRIVATE OFFICES
- 1 PHONE ROOM



LEASED LEASED LEASED LEASED LEASED LEASED LEASED

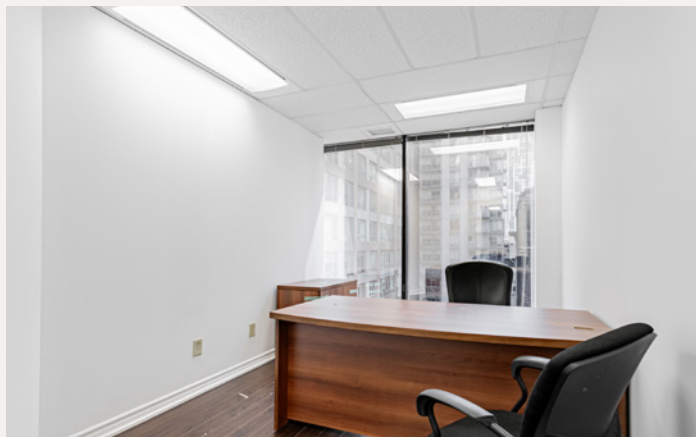


- SPACIOUS OPEN-CONCEPT WORK AREA
- FULLY-EQUIPPED KITCHEN
- LOUNGE AREA
- LARGE WINDOWS THROUGHOUT THE UNIT, FILLED WITH NATURAL LIGHT
- FURNITURE AVAILABLE

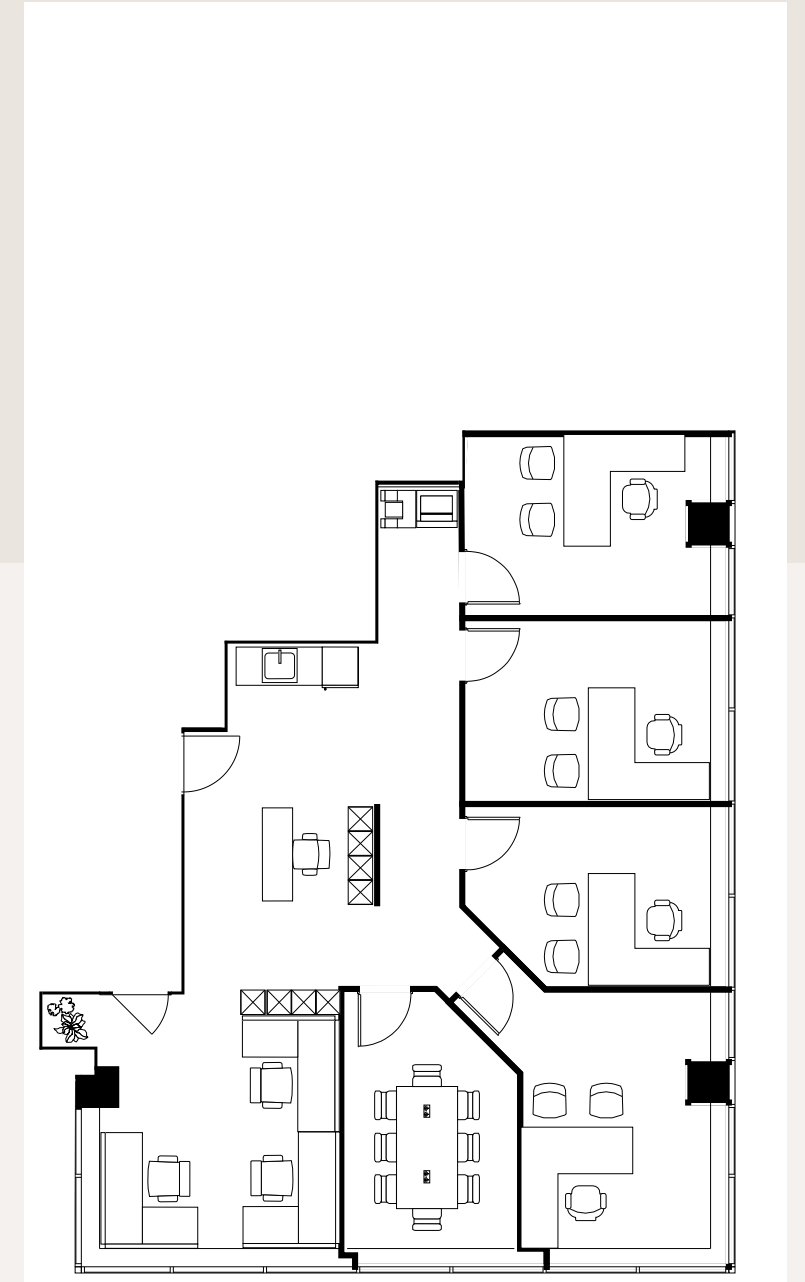


14TH FLOOR Suite 1401

SIZE: 1,660 SF



- 6 PRIVATE OFFICES/ MEETING ROOMS
- OPEN-CONCEPT WORK AREA
- FLOOR TO CEILING WINDOWS
- HARDWOOD FLOORS
- FURNITURE AVAILABLE



Landlord to complete the above floor plan for incoming tenant.

Position Your Office in the Vibrant Core of Downtown Toronto at the Prime Intersection of Yonge and King, Steps from Major Transit and the PATH Network



Steps from the King Subway Station and PATH network. Three blocks to Union Station.

Surrounded by an abundance of dining, retail, and entertainment options.

Easy access to TTC Subway and Streetcar.

Convenient access to major highways and Toronto Pearson International Airport.



10 KING EAST

THE HIDDEN GEM
OF FINANCIAL DISTRICT

KATE RIZZARDO *

Associate | kate.rizzardo@jll.com | 647 464-5033