

For Sublease

301 E. Liberty St. | Ann Arbor, MI
34,628 SF Available



Property Details

Located at the corner of Liberty Street and Fifth Avenue in the heart of Ann Arbor's CBD, and is in walking distance to numerous downtown retail, restaurants and U of M Campus.

- Term through 5/31/2028
- Move-in ready with furniture available
- Outdoor balcony
- Municipal lots and structure parking nearby
- Building signage available
- Easy access to I-94, US-23 and M-14

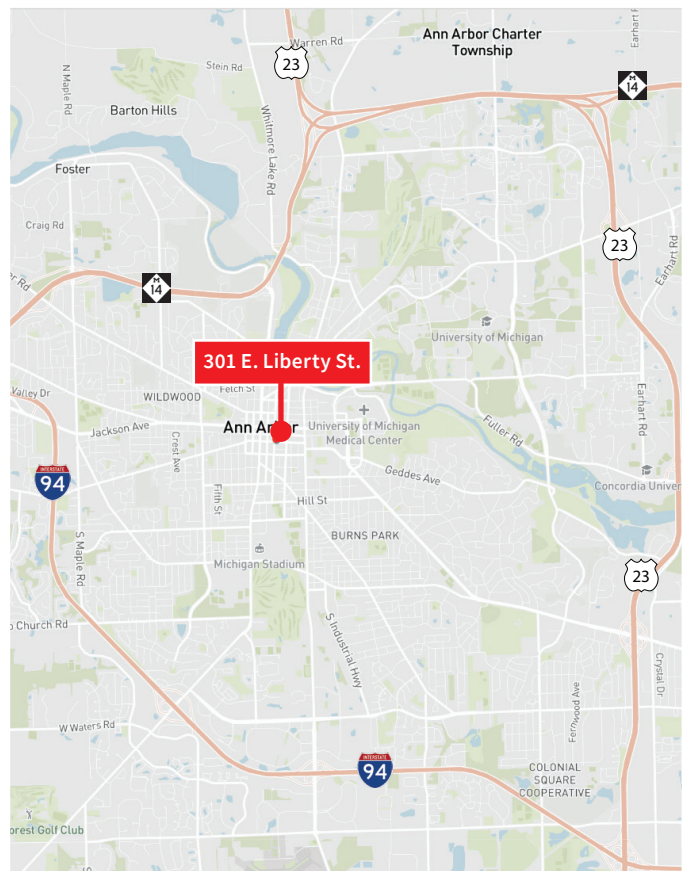
Asking Rate: \$24.00/SF

+ utilities and janitorial



34,628 SF Available

2nd Floor - 7,163 RSF
3rd Floor - 12,625 RSF
4th Floor - 14,840 RSF



JLL

AJ Weiner

aj.weiner@jll.com

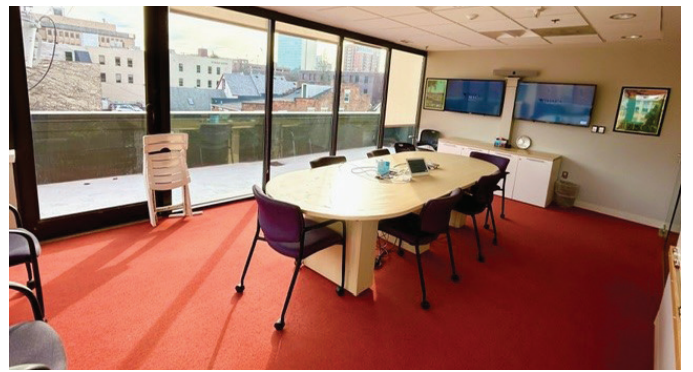
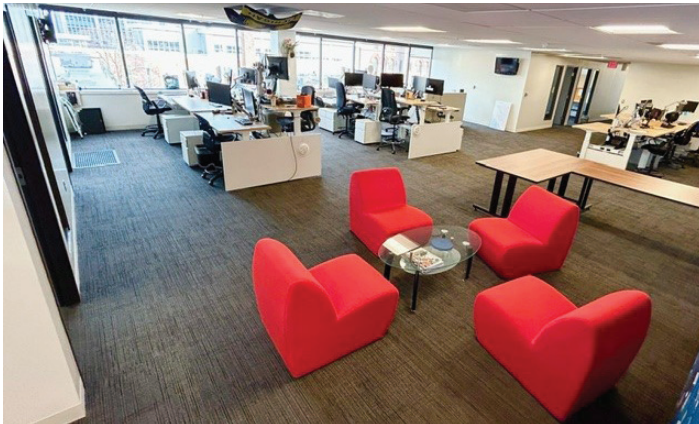
+1 248 591 3335

Colin McCausland

colin.mccausland@jll.com

+1 248 591 3308

Photos



JLL

AJ Weiner

aj.weiner@jll.com

+1 248 591 3335

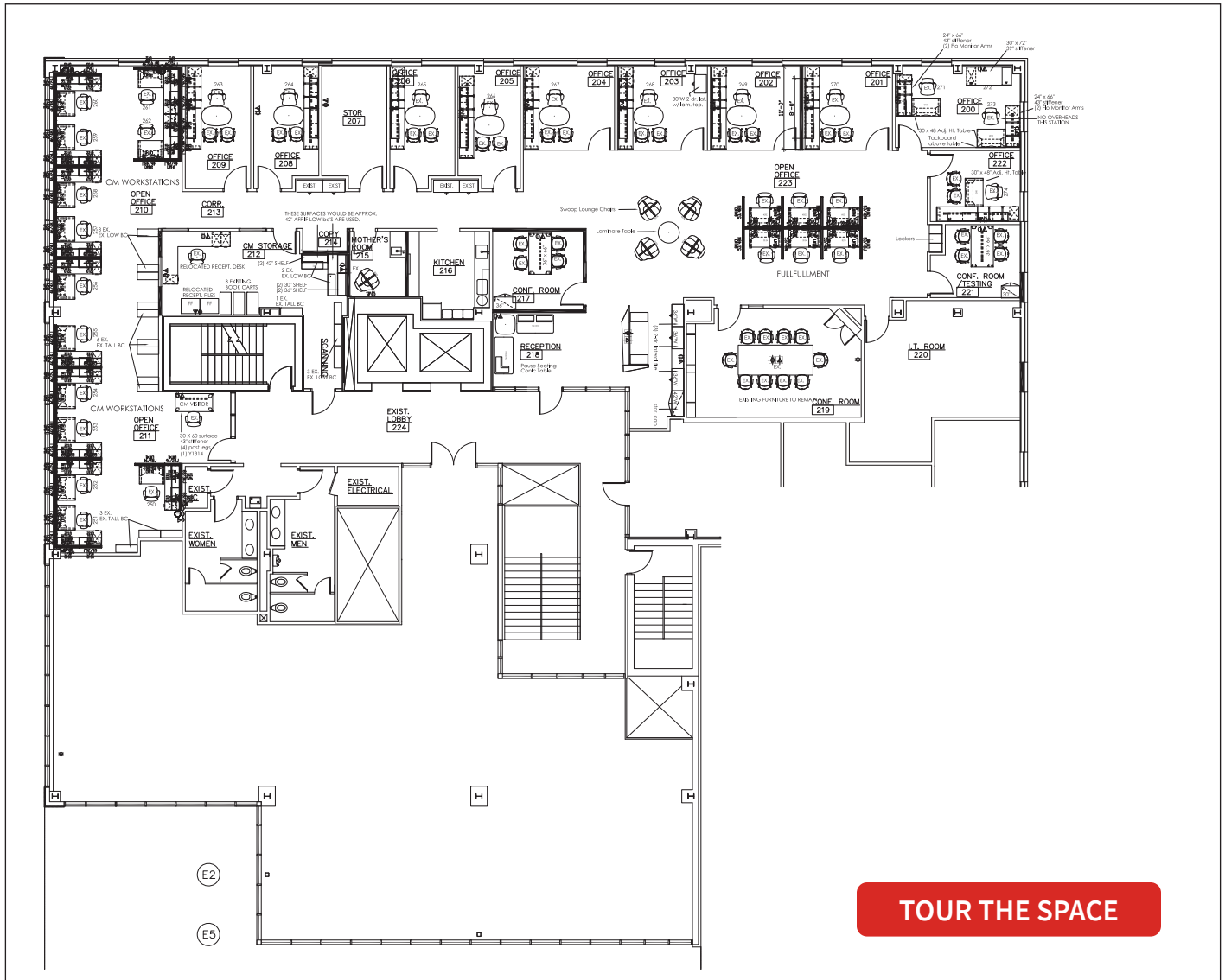
Colin McCausland

colin.mccausland@jll.com

+1 248 591 3308

Floor Plan

2nd Floor - 7,163 RSF



JLL

AJ Weiner

aj.weiner@jll.com

+1 248 591 3335

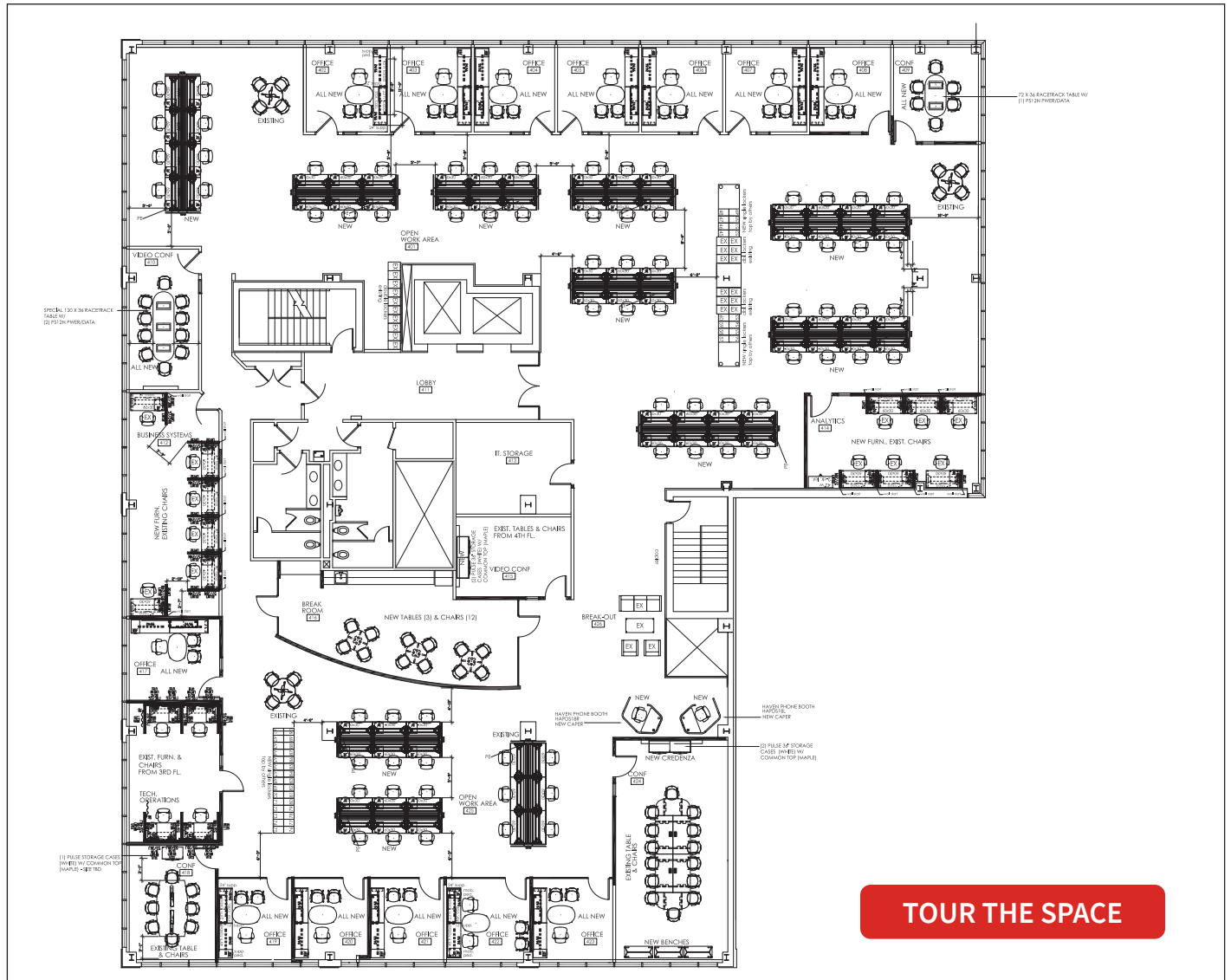
Colin McCausland

colin.mccausland@jll.com

+1 248 591 3308

Floor Plan

4th Floor - 14,840 RSF



JLL

AJ Weiner
 aj.weiner@jll.com
 +1 248 591 3335

Colin McCausland
 colin.mccausland@jll.com
 +1 248 591 3308