

Colonial Square at Airmont

329 Route 59, Airmont NY



950 SF & 2,750 SF available at 49,500 GLA Neighborhood Center in Rockland County, NY

David Townes
Managing Director
+1 917 993 5515
david.townes@jll.com

Alana Friedman
Vice President
+1 201 741 0990
alana.friedman@jll.com



Property Location

- » High Traffic shopping center in the heart of the retail corridor
- » Prime storefronts on Rockland County's main drag – Route 59 (17,677 VPD)
- » Excellent visibility and ample parking
- » Pylon signage available on the highway
- » In close proximity to NY State Thruway (Exit 14A)

Property Details

- » 950 SF – Former Pizza Restaurant
- » 2,750 SF – Currently French Seam
- » Asking Rent
Upon Request
NNN: \$9.00 PSF

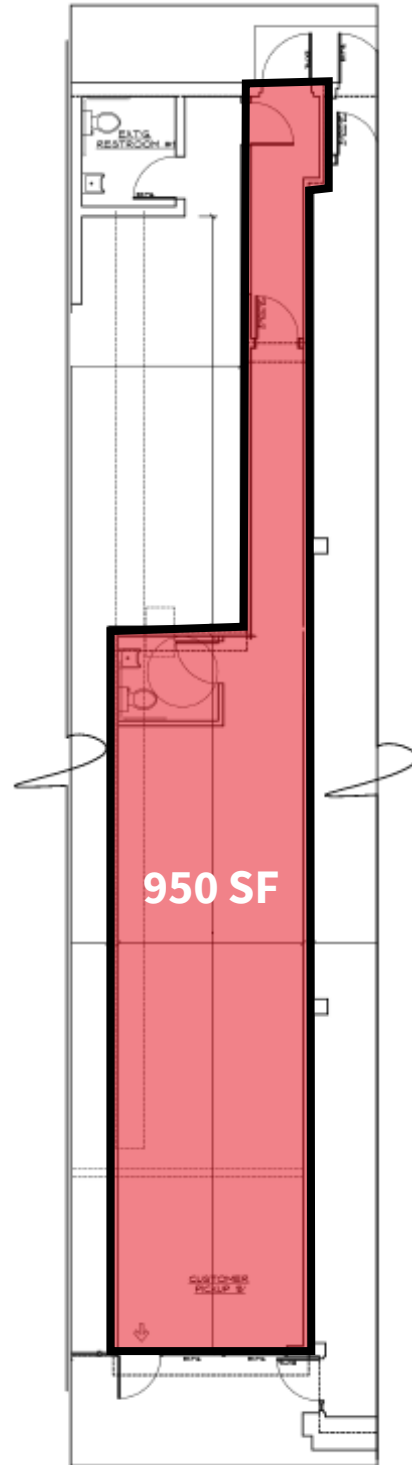
Neighboring Tenants



329 Route 59, Airmont NY



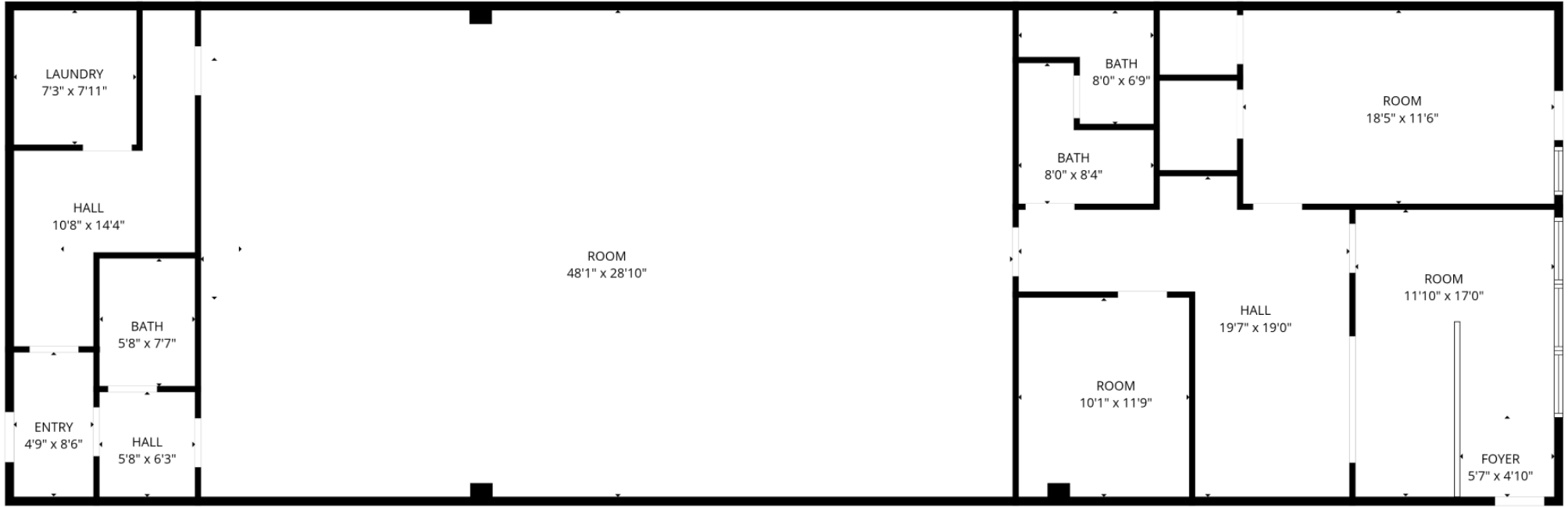
Floor Plan 1,000 SF



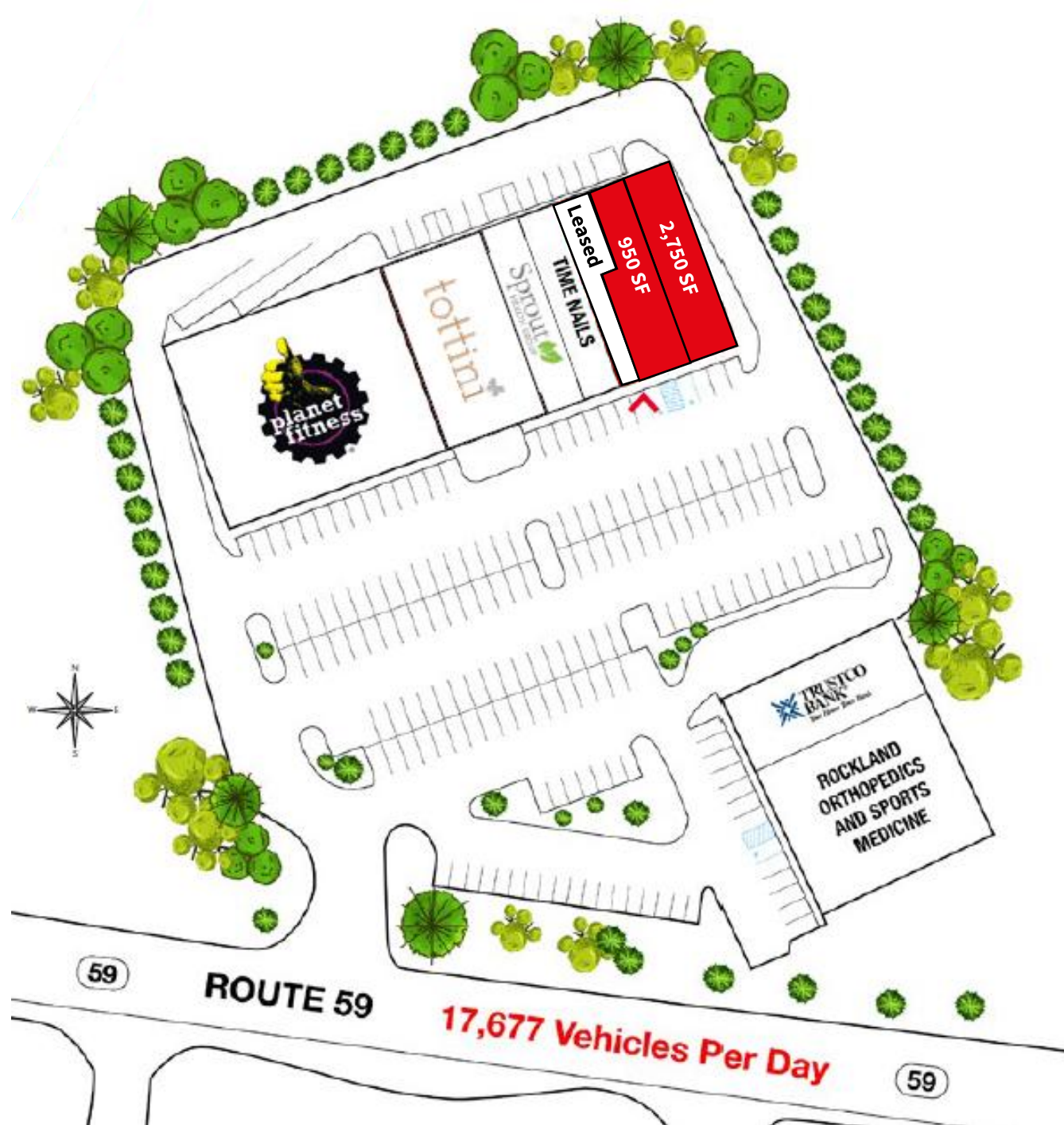
329 Route 59, Airmont NY



Floor Plan 2,750 SF



Site Aerial



Retail Aerial



SITE

tottini



5 Miles

208,836

Population



5 Miles

\$90,998

Med. HH Income



5 Miles

104,288

Employees



5 Miles

11,287

Businesses