



PLAZA2020

2020 CAMINO DEL RIO NORTH

www.Plaza2020.com

PLAZA2020

Sophisticated.
Modern.
Revitalized.

Plaza 2020 is centrally located in the Mission Valley area of San Diego. This Class "A" project is easily accessible from nearly all major interstates and highways in San Diego; I-5, I-8, I-805 and Hwy. 163.



On-site restaurants,
bank and many
other retail services



Walking distance to
Mission Valley mall
and the trolley



Direct access to
I-8, I-15, I-805 and
Hwy.163



Shower and locker
facilities

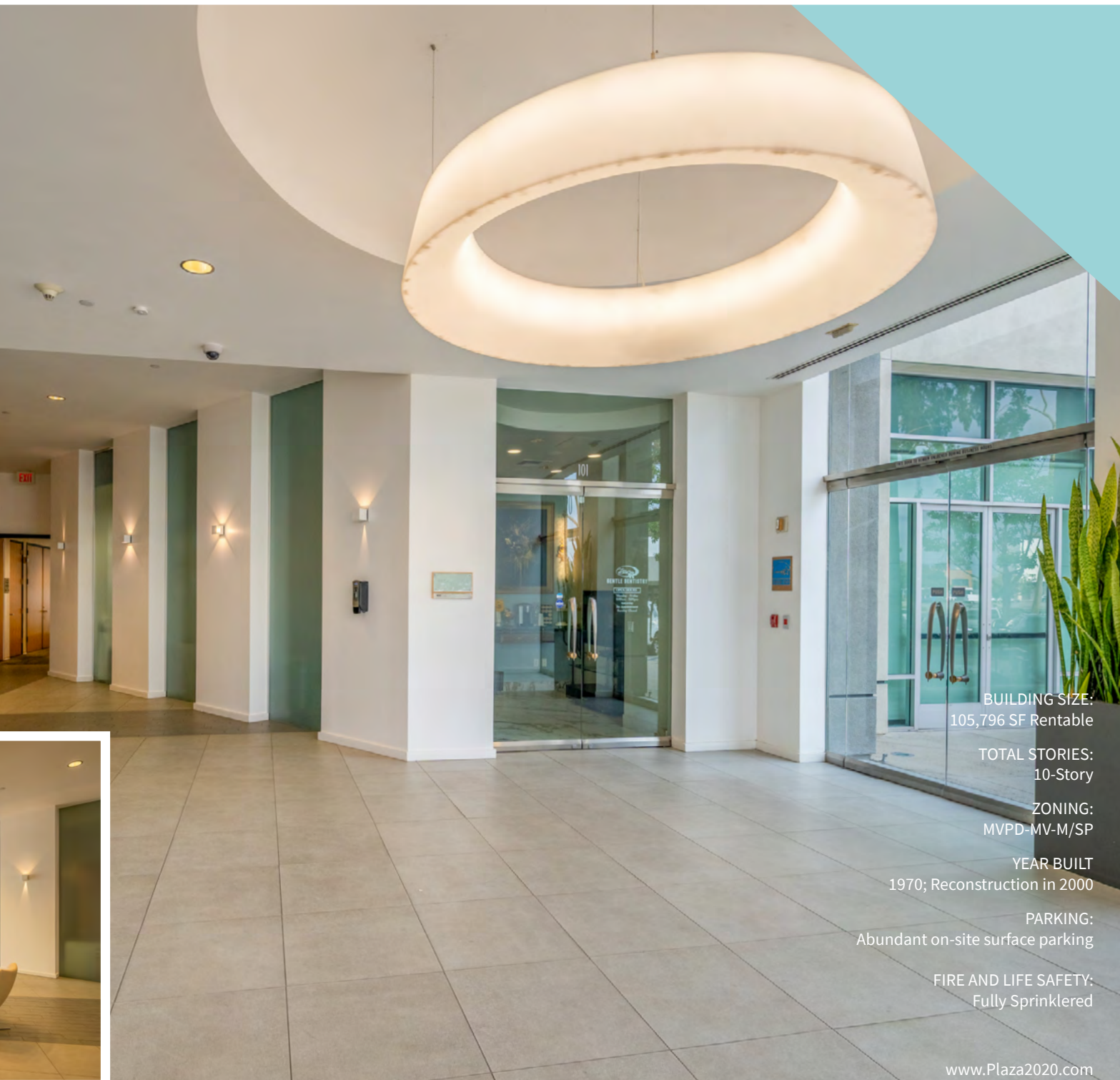


New modern lobby



New common corridor tile





BUILDING SIZE:
105,796 SF Rentable

TOTAL STORIES:
10-Story

ZONING:
MVPD-MV-M/SP

YEAR BUILT
1970; Reconstruction in 2000

PARKING:
Abundant on-site surface parking

FIRE AND LIFE SAFETY:
Fully Sprinklered

www.Plaza2020.com

Visible to over 201,900 cars a day!



Availability

SUITE	RSF	COMMENTS
105	2,072	Vacant. Retail or medical use with eyebrow signage. 2 private offices, storage, copy/file room.
210	1,191	Reception, 2 offices, open plan, kitchenette
305	3,075	Upgraded suite with furniture available. Contiguous with suite 310 for up to 4,698 SF.
310	1,623	Large open area, 2 private offices, storage & breakroom. Contiguous with suite 305 for up to 4,698 SF.

For office information:

Richard Gonor

tel +1 858 410 1243
richard.gonor@jll.com
License #: 01142178

Tony Russell

tel +1 858 410 1213
tony.russell@jll.com
License #: 01275372

Suite 105 | 2,072 r.s.f.

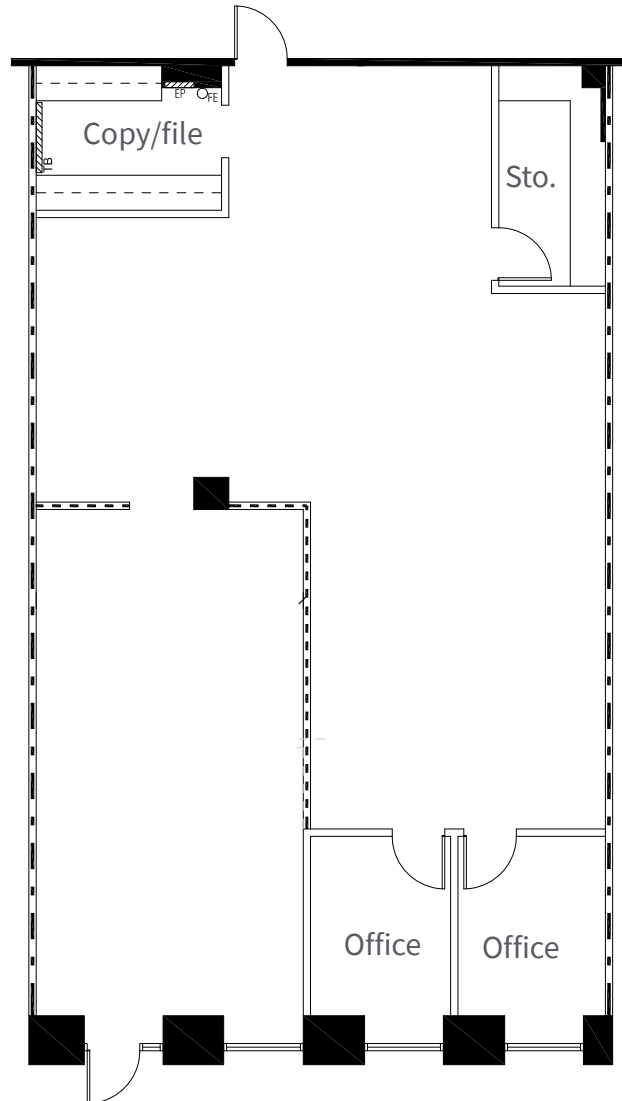
Vacant

Retail or medical use with eyebrow signage.

2 offices, storage, copy/file room



Click for virtual tour



PLAZA2020

2020 CAMINO DEL RIO NORTH

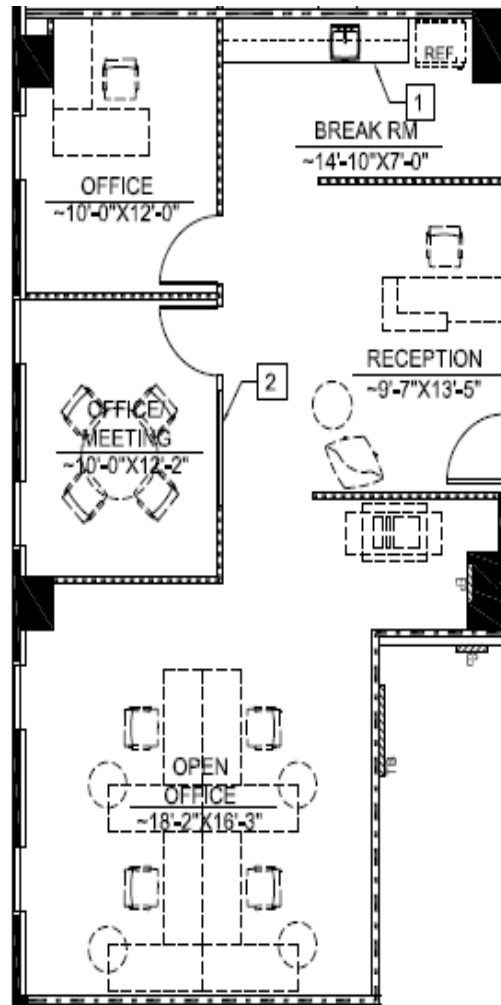


Suite 210 | 1,191 r.s.f.

Reception, 2 offices, open plan, kitchenette.



Click for virtual tour



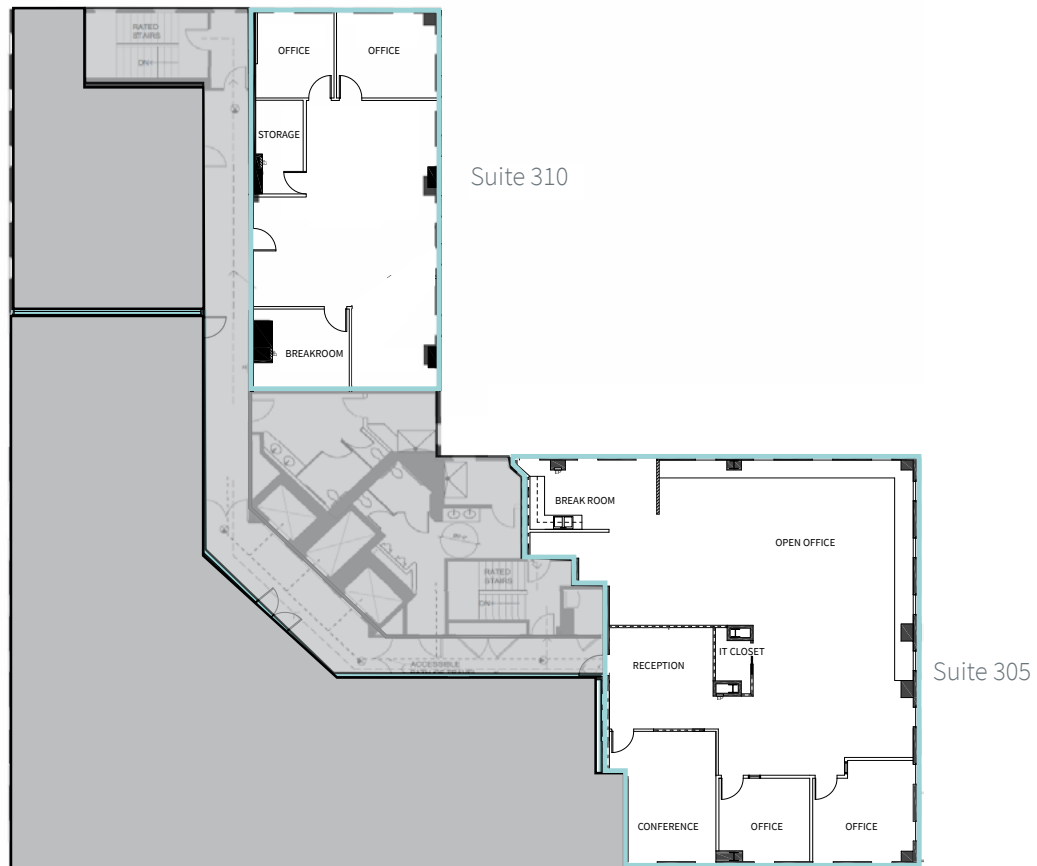
PLAZA2020

2020 CAMINO DEL RIO NORTH

Suite 305 | 3,075 r.s.f.  Click for virtual tour
Upgrade suite with furniture available.

Suite 310 | 1,623 r.s.f.  Click for virtual tour
Large open area, 2 private offices, storage, breakroom.

*Contiguous for up to 4,698 SF





2020

2020

Apple Hair's Spa

PASTELERIA







For office information:

Richard Gonor
 tel +1 858 410 1243
 richard.gonor@jll.com
 License #: 01142178

Tony Russell
 tel +1 858 410 1213
 tony.russell@jll.com
 License #: 01275372

PLAZA2020
 2020 CAMINO DEL RIO NORTH
 www.Plaza2020.com