












Chesapeake Industrial Park

For Lease

3804-3808 Cook Boulevard, Chesapeake | VA 23323

Features

-  One dock per bay
-  30' clear height
-  43'x31' column spacing
-  131' building depth
-  150' offset loading in truck court
-  3 phase power, 1200 amp
-  Office build-out to-suit
-  One radiant heater per bay
-  Wet pipe sprinkler



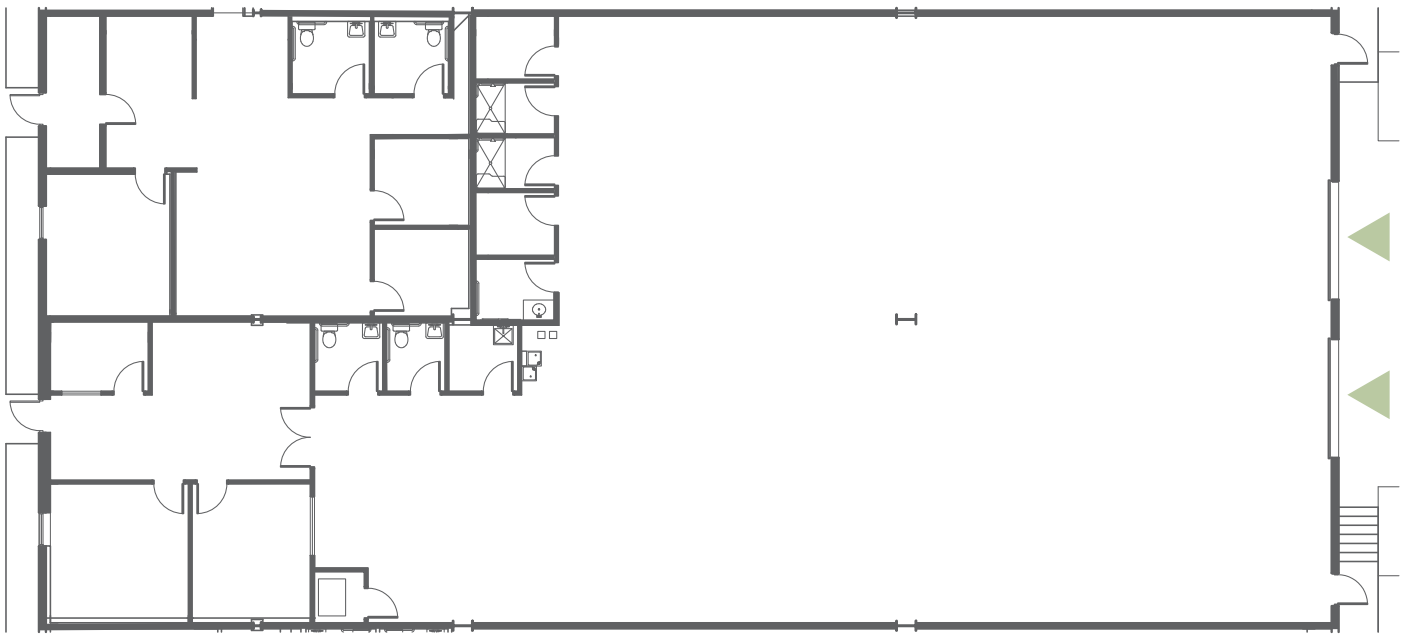
999 Waterside Drive, Suite 850 | Norfolk, VA 23510 | 757 965 3006



Suites 4-5

6,851 SF

3804 Cook Boulevard



Suites 7-11

20,535 SF

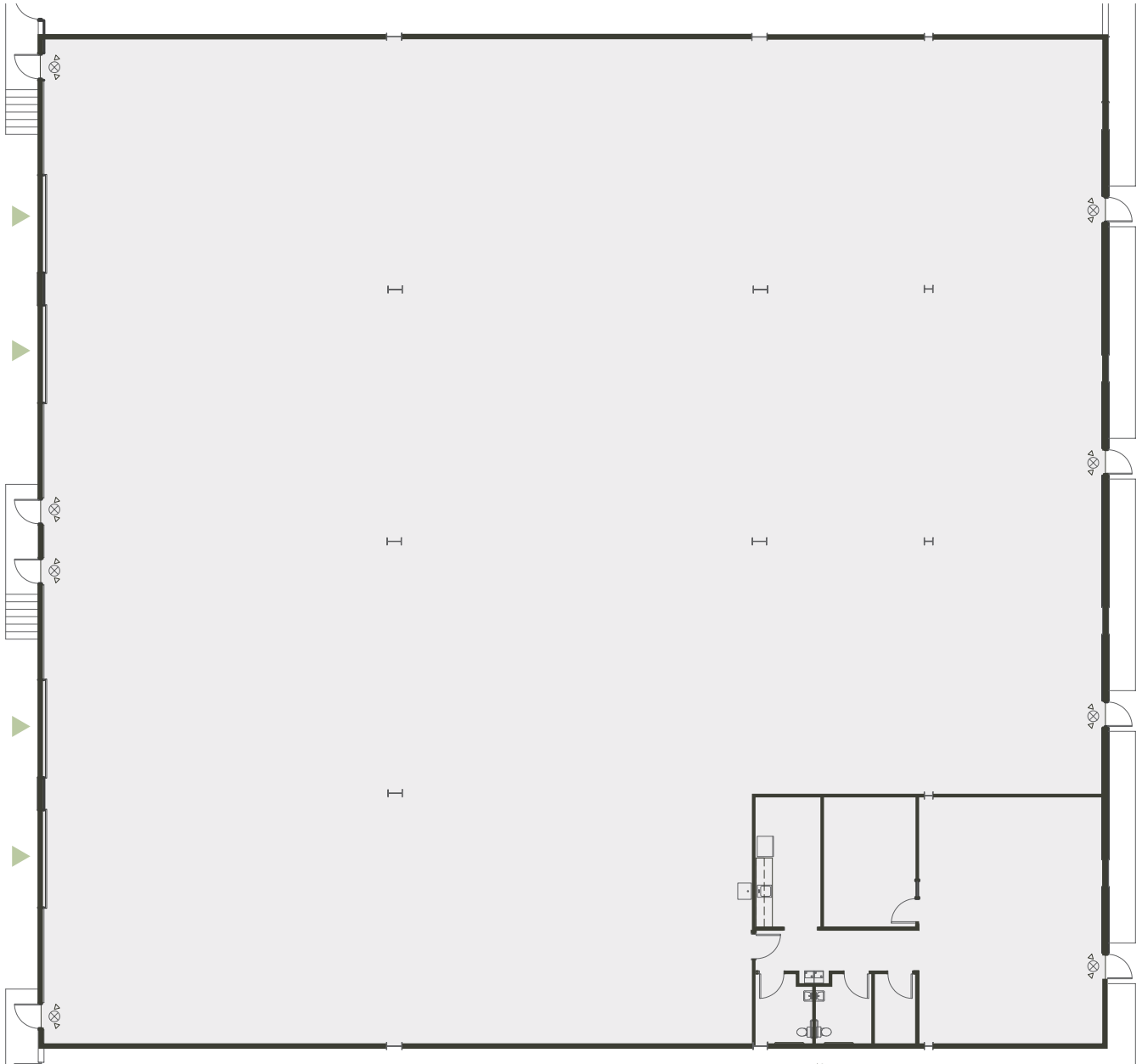
3804 Cook Boulevard

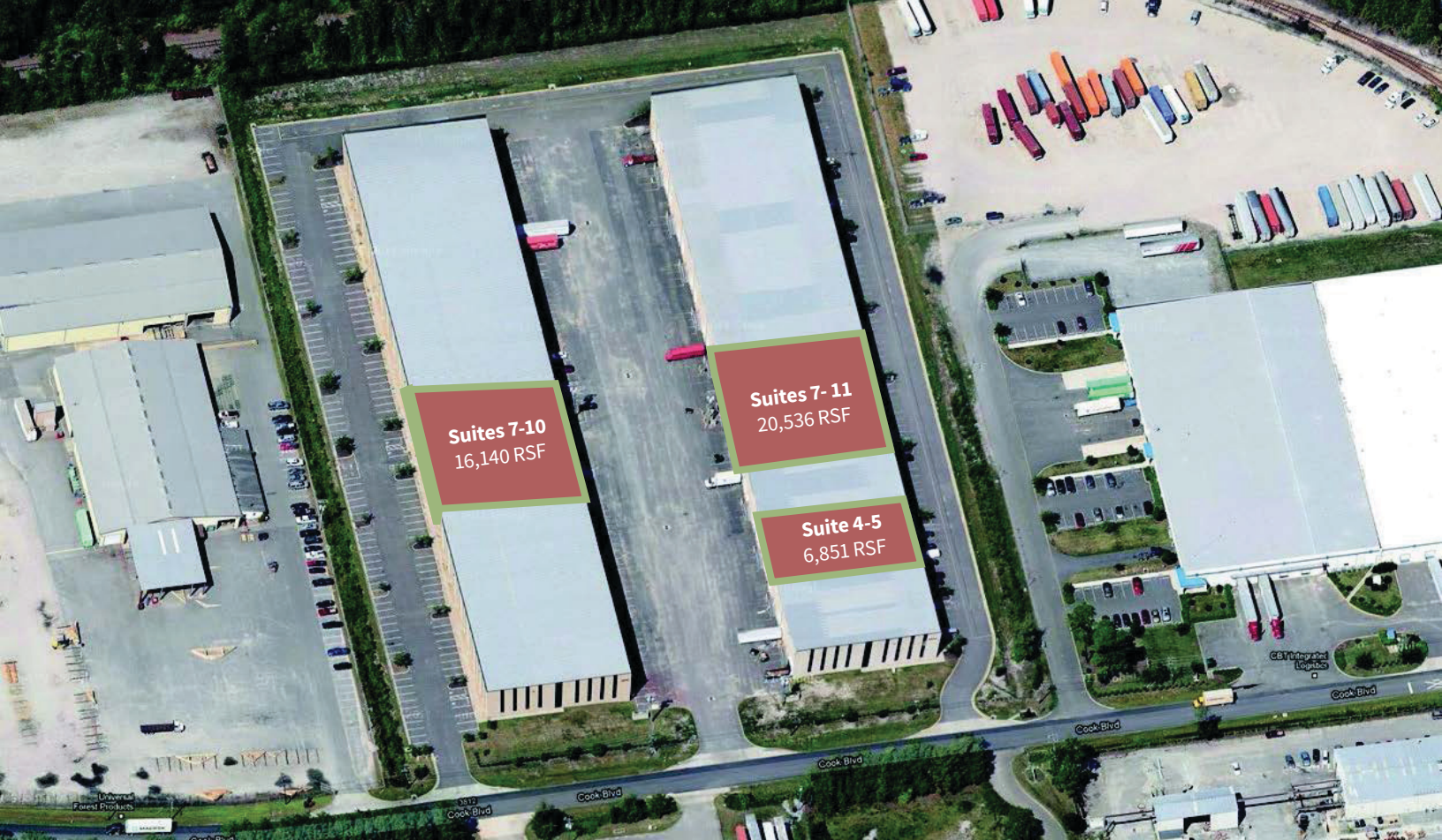


Suites 7-10

16,140 SF

3808 Cook Boulevard





3804 Cook Boulevard Suite 4-5

- 6,851 RSF
- 2 dock doors
- Available 7/1/26

3804 Cook Boulevard Suites 7-11

- 20,535 RSF
- 3 dock doors
- 2 grade-level doors
- Available 7/1/26

3808 Cook Boulevard Suites 7-10

- 16,140 RSF
- 4 dock doors
- Available 7/1/26





Trucking Distances To Port Terminals

Virginia International Gateway	10.9 mi
Norfolk International Terminals	13.9 mi
Newport News Marine Terminals	19.9 mi

Trucking Distances To Main Interstate Highways

Route 460	1.6 mi
I-664 and I-64	4.4 mi
Route 13	6.9 mi
Route 58	10.5 mi

*Distances are for routes legal for large truck use and may vary from distances for cars.

Gregg Christoffersen

Managing Director

+1 757 348 1477

gregg.christoffersen@jll.com

Todd Scholsohn

Senior Associate

+1 757 938 1562

todd.scholsohn@jll.com

