



Proposed Anchor Development For Lease

Camp Road Commons
Camp Road • Tavares, FL 32778

Market Aerial




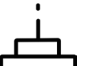


Property Highlights

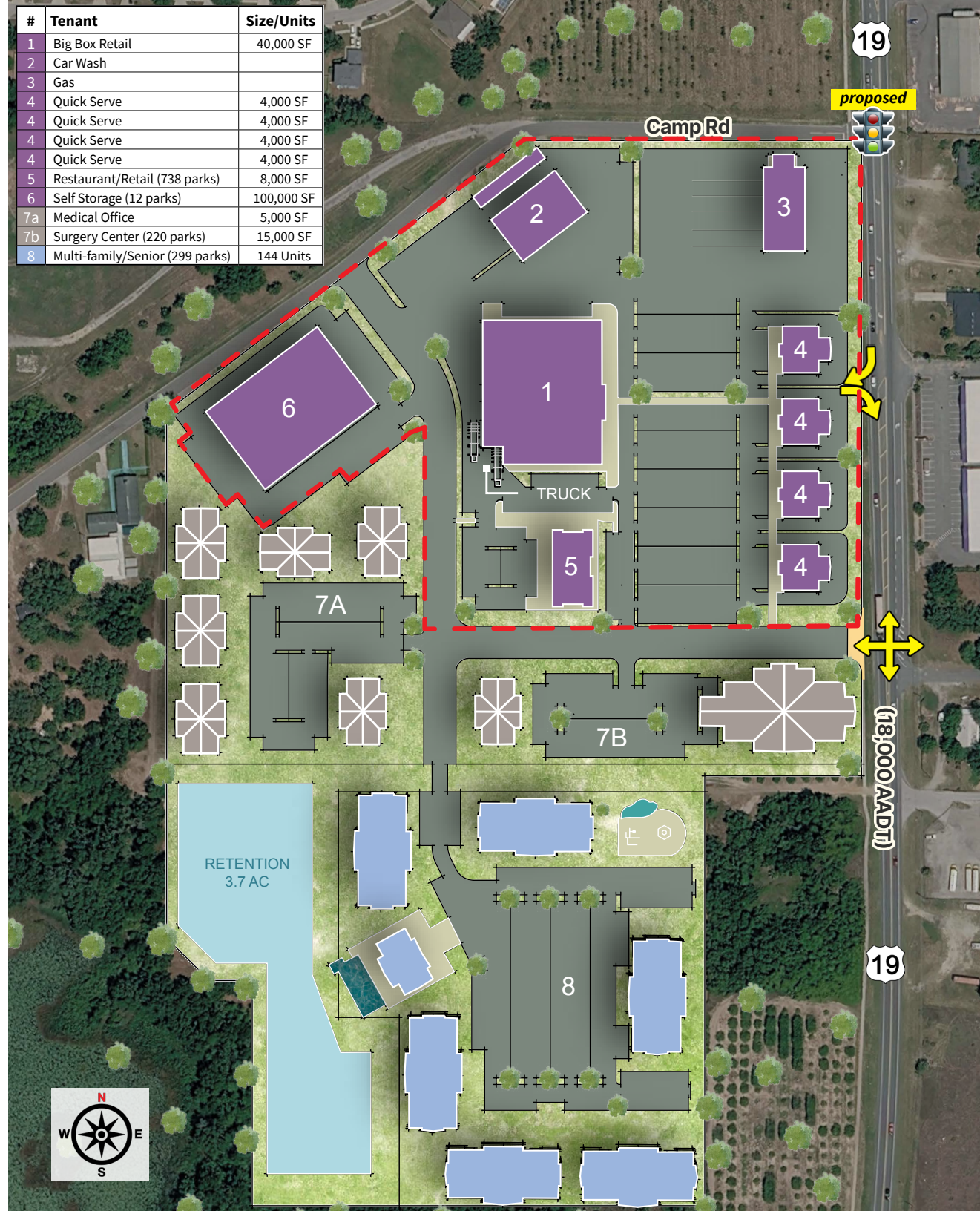
- Come join Tavares newest mixed-use development!
- Proposed anchor user with outparcels and medical space
- 144 units - multifamily/senior housing
- New lighted intersection on US 19 (18,000 AADT)
- Tavares is one of Lake Counties' fastest growing cities with nine new development communities in a 3 mile radius

Demographics

(ESRI 2025)

POPULATION		AVERAGE HH INCOME	
	5 MINS. 6,371		5 MINS. \$70,589
	10 MINS. 24,226		10 MINS. \$82,226
	15 MINS. 60,992		15 MINS. \$80,638
HOUSEHOLDS		MEDIAN AGE	
	5 MINS. 2,499		5 MINS. 49.3
	10 MINS. 10,739		10 MINS. 53.7
	15 MINS. 27,165		15 MINS. 51.7

#	Tenant	Size/Units
1	Big Box Retail	40,000 SF
2	Car Wash	
3	Gas	
4	Quick Serve	4,000 SF
4	Quick Serve	4,000 SF
4	Quick Serve	4,000 SF
4	Quick Serve	4,000 SF
5	Restaurant/Retail (738 parks)	8,000 SF
6	Self Storage (12 parks)	100,000 SF
7a	Medical Office	5,000 SF
7b	Surgery Center (220 parks)	15,000 SF
8	Multi-family/Senior (299 parks)	144 Units






Listing Agent:



Antonino Poma
Vice President

 +1 407 488 4794

 antonino.poma@jll.com

Although information has been obtained from sources deemed reliable, JLL does not make any guarantees, warranties or representations, express or implied, as to the completeness or accuracy as to the information contained herein. Any projections, opinions, assumptions or estimates used are for example only. There may be differences between projected and actual results, and those differences may be material. JLL does not accept any liability for any loss or damage suffered by any party resulting from reliance on this information. If the recipient of this information has signed a confidentiality agreement with JLL regarding this matter, this information is subject to the terms of that agreement. ©2026. Jones Lang LaSalle Brokerage, Inc. All rights reserved.