



10190 SYSTEMS PARKWAY

SACRAMENTO, CA 95827

AVAILABLE FOR LEASE



Jones Lang LaSalle Brokerage, Inc. RE License #01856260

PROPERTY HIGHLIGHTS:

GENERAL INFORMATION



±2,785 SF available



100% conditioned space



Zoning: OIMU (Office/Industrial Mixed-Use (OIMU))



Building signage available



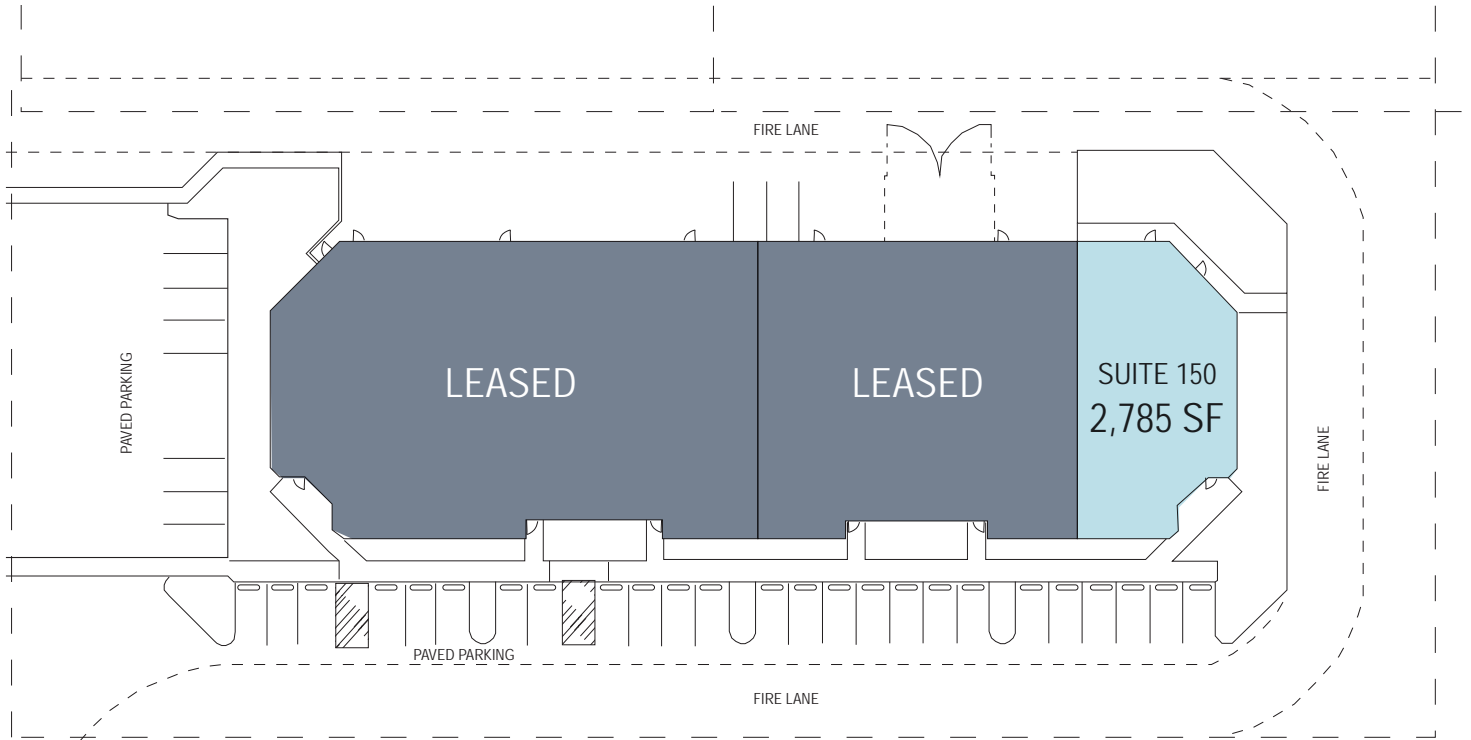
Great visibility on Old Placerville Road



Easy Highway 50 access at Mather Field Road and Bradshaw Road

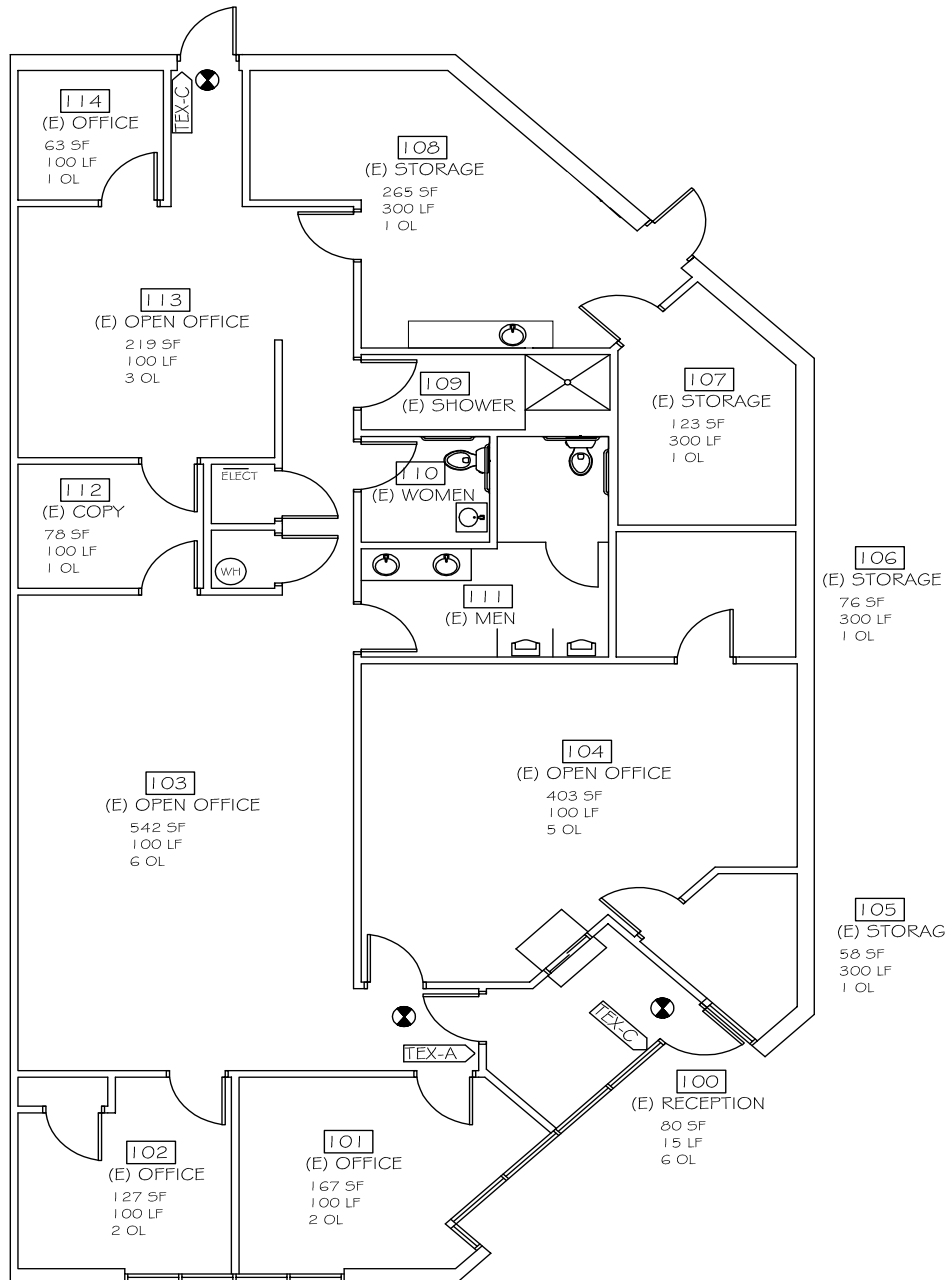


SITE PLAN

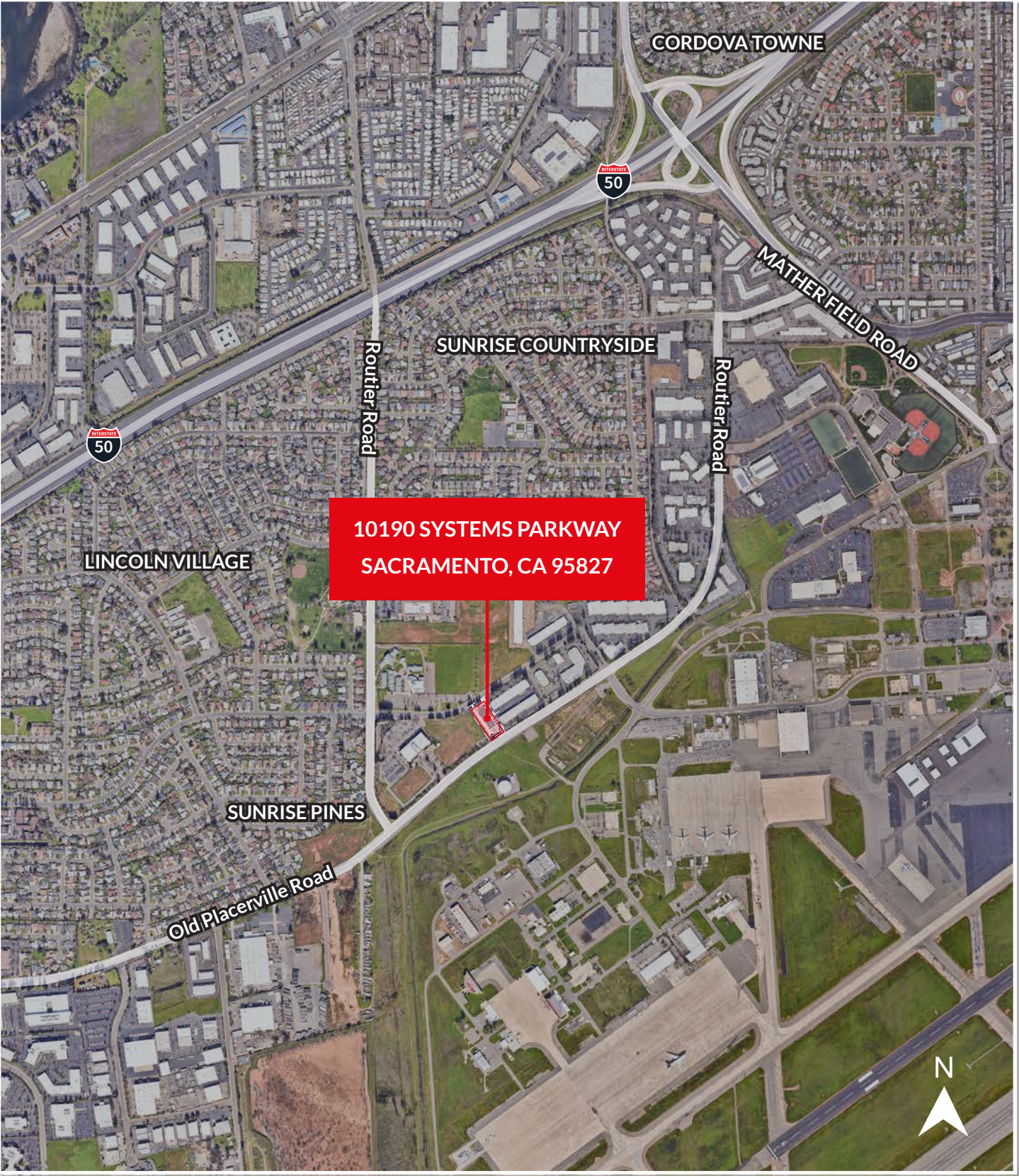


FLOOR PLANS

Suite 150 | ±2,785 SF available



AERIAL MAP



10190 SYSTEMS PARKWAY

SACRAMENTO, CA 95827

FOR MORE INFORMATION, CONTACT:'

Michael Stassi

Tel: +1 916 440 1824
michael.stassi@jll.com
RE License #01198564

Daniel Baker

Tel: +1 916 440 1839
daniel.baker@jll.com
RE License #01705912



Although information has been obtained from sources deemed reliable, JLL does not make any guarantees, warranties or representations, express or implied, as to the completeness or accuracy as to the information contained herein. Any projections, opinions, assumptions or estimates used are for example only. There may be differences between projected and actual results, and those differences may be material. JLL does not accept any liability for any loss or damage suffered by any party resulting from reliance on this information. If the recipient of this information has signed a confidentiality agreement with JLL regarding this matter, this information is subject to the terms of that agreement. ©2026 Jones Lang LaSalle Brokerage, Inc. All rights reserved.

Jones Lang LaSalle Brokerage, Inc., RE License #01856260.