

For Lease

11391 Sunrise Gold Circle | Rancho Cordova
Warehouse with Office & Secured Yard



Property Highlights

- ±55,000 SF available
- ±15,000 SF office (open office concept, exterior private offices, breakrooms, restroom and dropped ceiling production area)
- ±24' Clear Height
- Power: 600amps-480v (to be verified by tenant)
- 2 Grade Level Doors (12'x14')
- 2 Dock High Doors with pit levelers
- Fully Sprinklered
- Fully Insulated Roof Deck
- ±120' Truck Court
- ±3,200 SF fenced/secured yard
- Fully fenced site with gated ingress/egress
- M-1 Zoning, City of Rancho Cordova
- Easy access to Highway 50

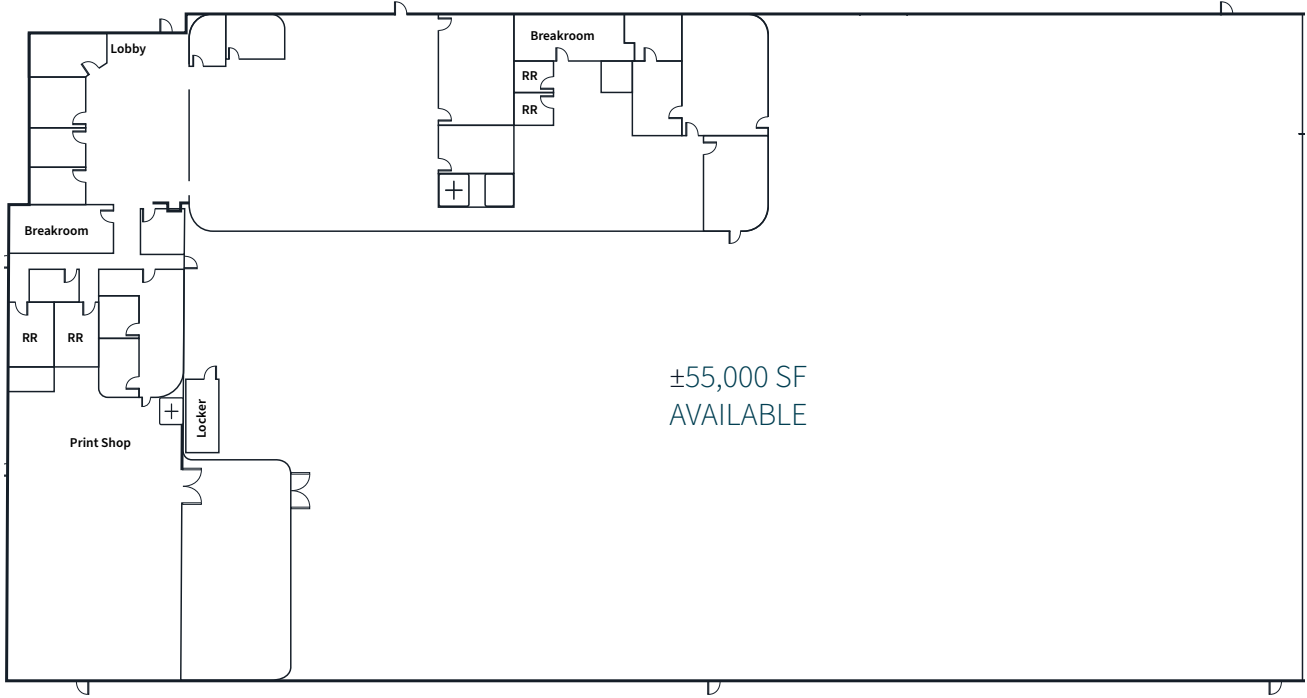


Daniel Baker
Vice President
daniel.baker@jll.com
+1 916 440 1839
RE Lic # 01705912

jll.com

Site Plan

470'



Aerial Map



11391 Sunrise Gold Circle | Rancho Cordova Warehouse with Office & Secured Yard



JLL

Daniel Baker

Vice President

daniel.baker@jll.com

+1 916 440 1839

RE Lic # 01705912

[jll.com](https://www.jll.com)

Although information has been obtained from sources deemed reliable, neither Owner nor JLL makes any guarantees, warranties or representations, express or implied, as to the completeness or accuracy as to the information contained herein. Any projections, opinions, assumptions or estimates used are for example only. There may be differences between projected and actual results, and those differences may be material. The Property may be withdrawn without notice. Neither Owner nor JLL accepts any liability for any loss or damage suffered by any party resulting from reliance on this information. If the recipient of this information has signed a confidentiality agreement regarding this matter, this information is subject to the terms of that agreement. ©2025. Jones Lang LaSalle Brokerage, Inc. All rights reserved.